

FMART T10PRO

FMART T10PRO Window Cleaning Robot User Manual

Model: T10PRO

INTRODUCTION

The FMART T10PRO Window Cleaning Robot is designed to provide efficient and safe cleaning for both interior and exterior windows. Featuring dual-spray technology, AI intelligent path planning, and robust safety mechanisms, this robot simplifies window maintenance, saving you time and effort. This manual provides detailed instructions for setup, operation, and maintenance to ensure optimal performance and longevity of your device.

SAFETY INFORMATION

Please read all safety instructions carefully before operating the FMART T10PRO. Failure to follow these instructions may result in injury or damage to the device.

- The T10PRO includes a built-in Uninterruptible Power Supply (UPS) system, providing up to 30 minutes of operation during power outages to prevent falls.
- Always attach the high-strength 5m safety rope with 1393N pulling force to a secure anchor point before operation, especially for high-altitude cleaning.
- Ensure the cleaning pads are properly installed and secure before starting the robot.
- Use only recommended cleaning solutions, such as glass cleaner or purified water, in the water tank.
- Keep hands and loose clothing away from moving parts during operation.
- Do not operate the robot on cracked or damaged glass surfaces.
- Supervise the robot during its first few uses to ensure proper adherence and operation.

Safety Protection

Four Layers of Safety, Fearless High-Altitude Cleaning

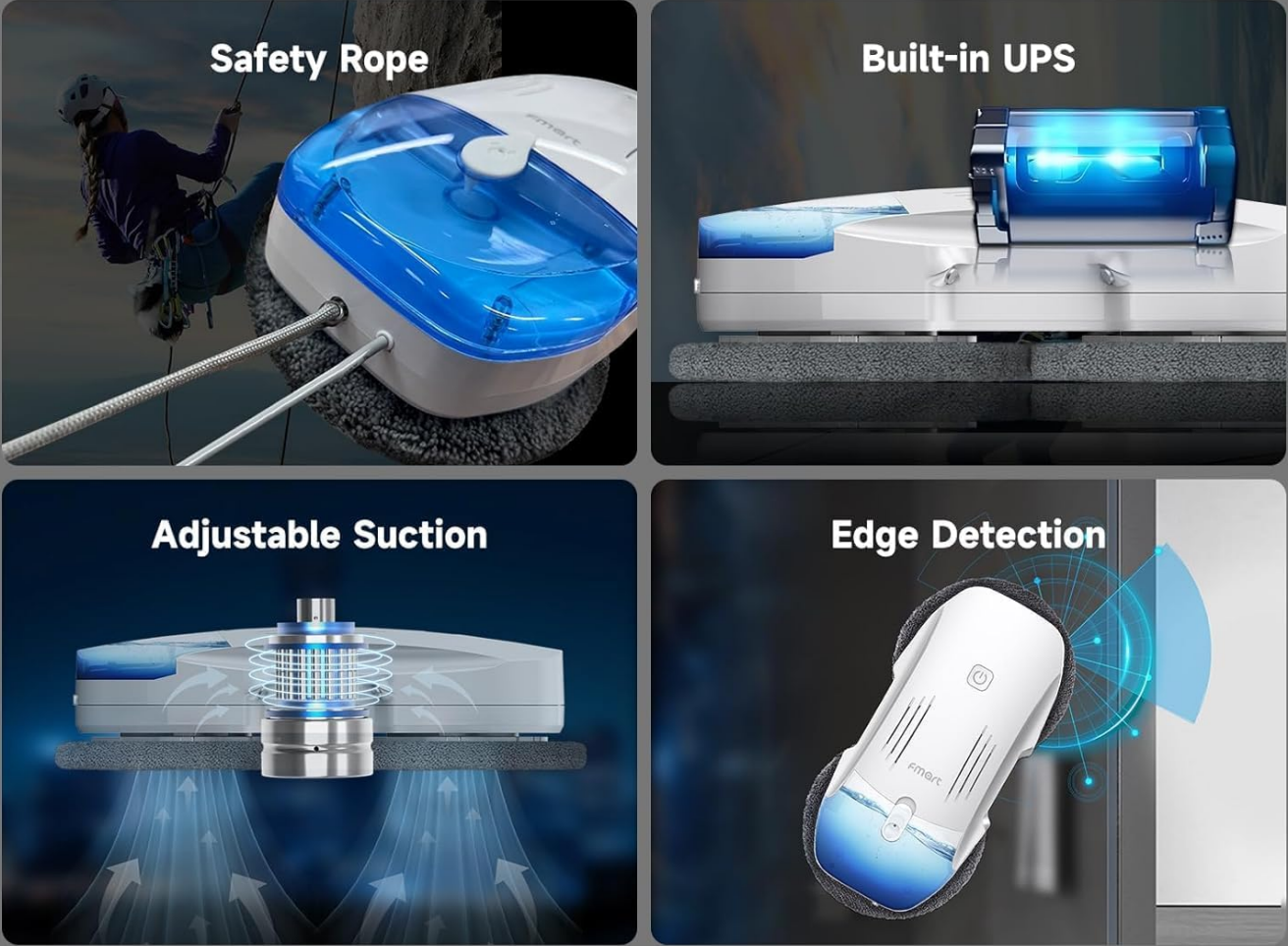


Figure 1: Safety Protection Features of the T10PRO.

PRODUCT OVERVIEW

The FMART T10PRO is an ultra-thin window cleaning robot designed for comprehensive window cleaning. It features a powerful suction motor, dual-spray nozzles, and intelligent navigation.

Components

| Component | Description |
|------------|--|
| Main Unit | The robot itself, housing the motor, water tank, and controls. |
| Power Plug | For connecting to a power outlet. |
| Adapter | Converts power for the robot. |

| Component | Description |
|-------------------|-------------------------------------|
| Replacement Wipes | Microfiber cleaning cloths. |
| Safety Harness | 5-meter safety rope with carabiner. |
| Spray Bottle | For filling the water tank. |
| Remote Control | For manual control of the robot. |
| User Manual | This instruction guide. |

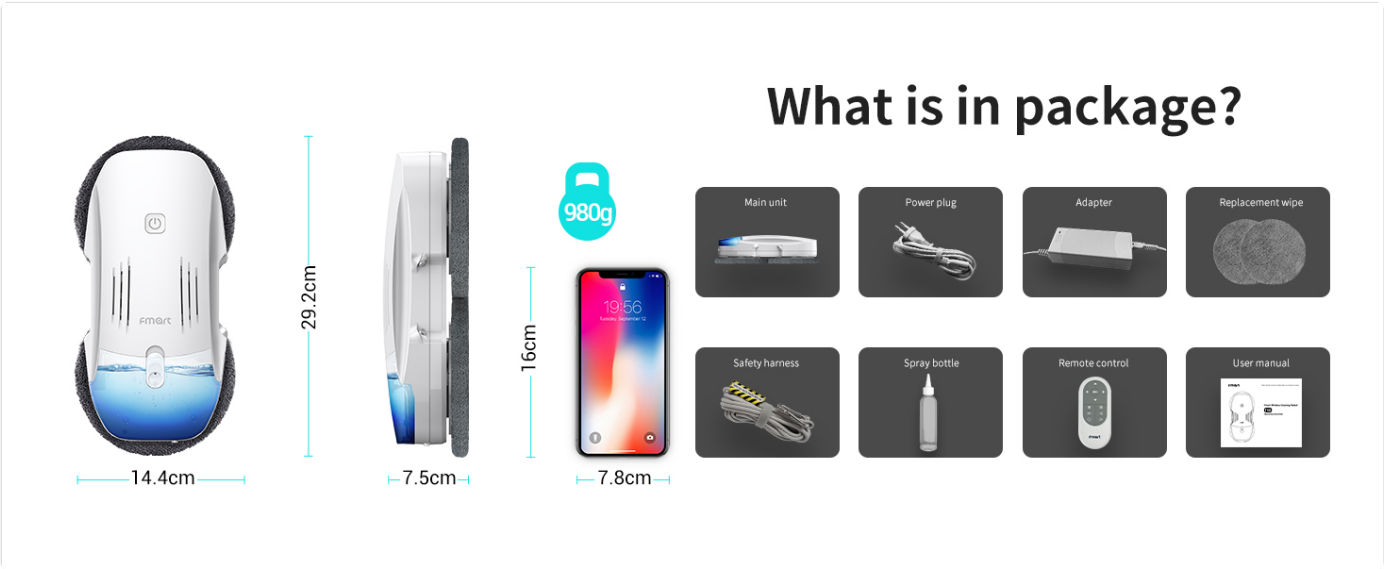


Figure 2: What is included in the package.

SETUP

Follow these steps to prepare your FMART T10PRO for its first use.

- 1. Attach the Cleaning Cloths:** Ensure the cloth is installed smoothly and that the cloth holder is secure and not loose.
- 2. Connect the Adapter:** Connect the adapter to the robot, rotating 90 degrees to secure.
- 3. Connect the Power Plug:** Connect the power plug to the adapter.
- 4. Connect the Safety Rope:** Securely connect the safety rope to the designated attachment point on the robot.
- 5. Fill the Water Tank:** Open the water tank cap and fill with glass cleaner or purified water using the provided spray bottle. It is recommended to use glass cleaner for best results.
- 6. Secure the Safety Rope:** Attach the other end of the safety rope to a sturdy anchor point, such as a window frame or a heavy piece of furniture, to prevent accidental falls.
- 7. Plug in the Power Supply:** Insert the power plug into a suitable electrical outlet.

How to install and use?

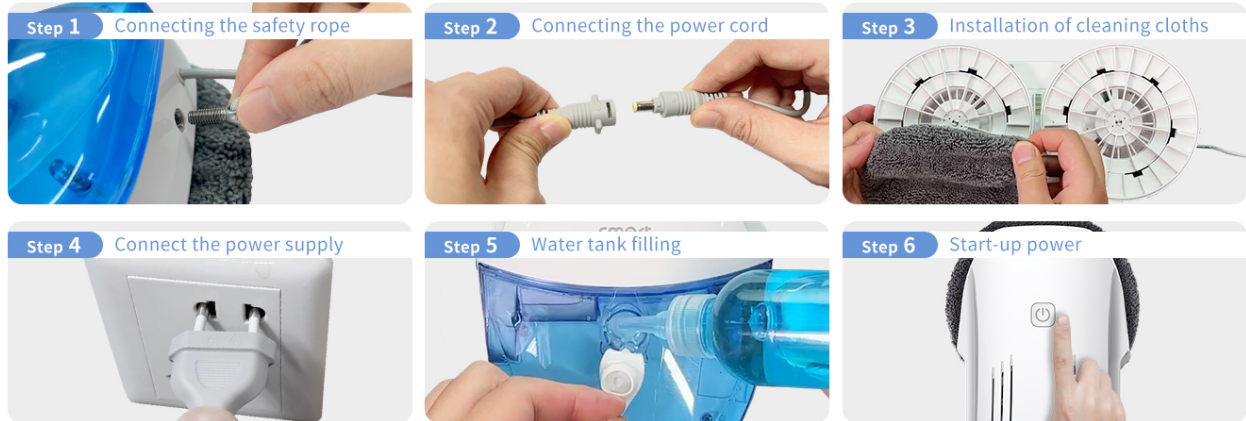


Figure 3: Installation and Setup Steps.

OPERATING INSTRUCTIONS

Powering On/Off

- **To Turn On:** Long press the power button on the device until the indicator light turns green.
- **To Turn Off:** Long press the power button on the device.

Starting/Stopping Cleaning

- **To Start:** Short press the power button on the device.
- **To Stop/Pause:** Short press the power button on the device again.

Control Methods

The FMART T10PRO can be controlled via the included remote control or through the dedicated mobile application.

Remote Control

The 2.4G remote control offers a 10m range with wall-penetrating capability.

FMART App

Supports Multiple Languages
Troubleshooting Assistance

Includes Installation Guide
OTA (Over-the-Air) Updates



Figure 4: Control via Remote and App.

Remote Control Button Functions:

- **Up Arrow:** Clean upward
- **Left Arrow:** Clean to the left
- **Right Arrow:** Clean to the right
- **Down Arrow:** Clean downwards
- **Play/Pause Button:** Start/pause cleaning
- **Sprinkler Icon:** Turn on/off the sprinkler
- **Target Icon:** Fixed-point cleaning
- **Water Drop Icon:** Manual water spray
- **Left Arrow with 'A':** Automatic cleaning to the left
- **Right Arrow with 'A':** Automatic cleaning to the right
- **'A' Button:** Deep cleaning

Mobile Application (FMART Smart App)

The FMART Smart App provides advanced control and monitoring features. Ensure your phone is connected to Wi-Fi before setup.

1. **Connect to Wi-Fi:** Ensure your mobile device is connected to a stable Wi-Fi network.
2. **Download App:** Open your device's app store (e.g., Apple App Store) and search for "fmart smart". Download and install the application.
3. **Register/Login:** Open the app, agree to all user agreements and privacy policies, then register for a new account or log in if you already have one.
4. **Pairing Mode:** On the robot, short press the power button three times continuously to enter network matching mode (blue light will be on).
5. **Add Device in App:** In the app, click the "Add Device" button or the '+' icon in the top right corner. Allow location and Bluetooth permissions when prompted.
6. **Connect:** The app will search for nearby devices. Once the "Window cleaning robot" is found, click "Connect" or "Add".
7. **Enter Wi-Fi Password:** Enter your Wi-Fi network password when prompted.
8. **Complete Connection:** Wait for the connection to complete. Once successful, click "Done" and the app interface for controlling the robot will load.

Your browser does not support the video tag.

Video 1: T10PRO User Guide App Connection Guide. This video demonstrates the step-by-step process of connecting the FMART T10PRO window cleaning robot to the mobile application, including initial setup and pairing.

Cleaning Modes

The T10PRO offers multiple cleaning modes to suit various needs:

- **Automatic Cleaning:** One-touch start for a full auto-clean cycle.
- **Deep Cleaning:** Cleans the surface twice for a more thorough result.
- **360-degree Cleaning:** Allows for clean maneuvering and timely obstacle avoidance for more comprehensive coverage.
- **Spot Cleaning:** Targets tough stains and cleans deeply in a specific area.

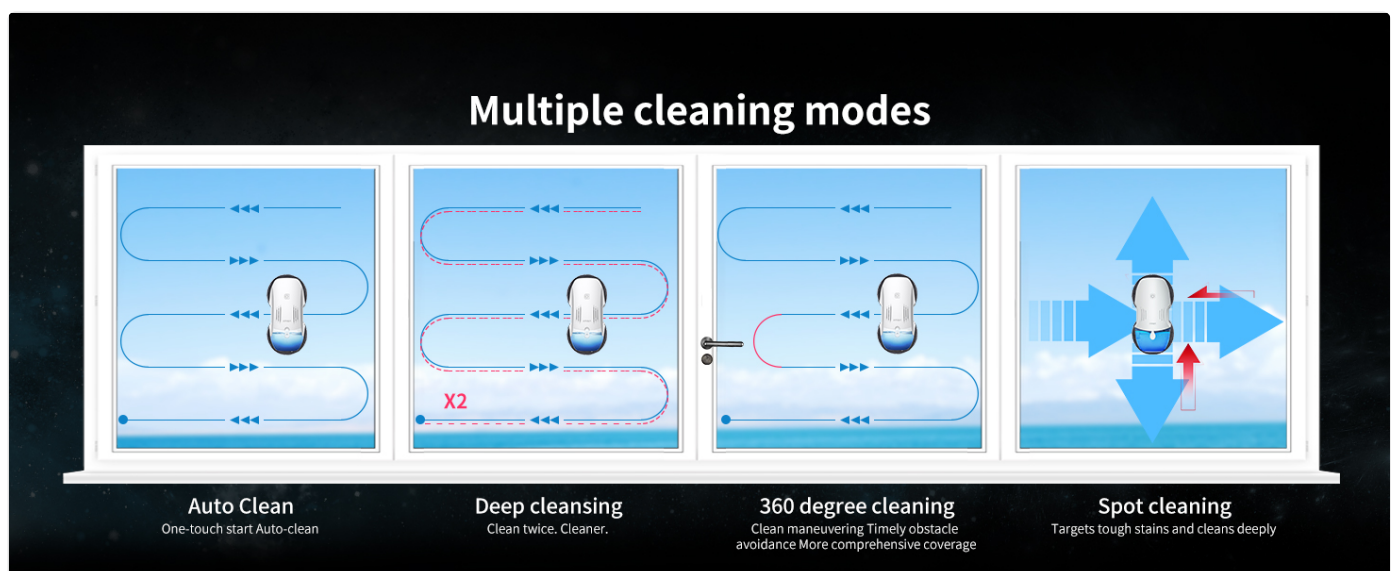


Figure 5: Multiple Cleaning Modes.

Intelligent Path Planning & Edge Detection

The robot utilizes FMART SLAM 4.0 AI Path Planning for efficient cleaning, covering up to 37.17 sq ft/min. It includes:

- **Edge Detection:** Built-in AI detects window frames and adjusts the robot's direction, ensuring a thorough clean even without a frame, while avoiding obstacles.

- **Memory Start Point & Auto Return:** The robot automatically returns to its starting point after completing a cleaning cycle, making it easy to retrieve.
- **Wet and Dry Wiping Combined:** For a cleaner finish, the robot performs wet wiping on one side and dry wiping on the other.

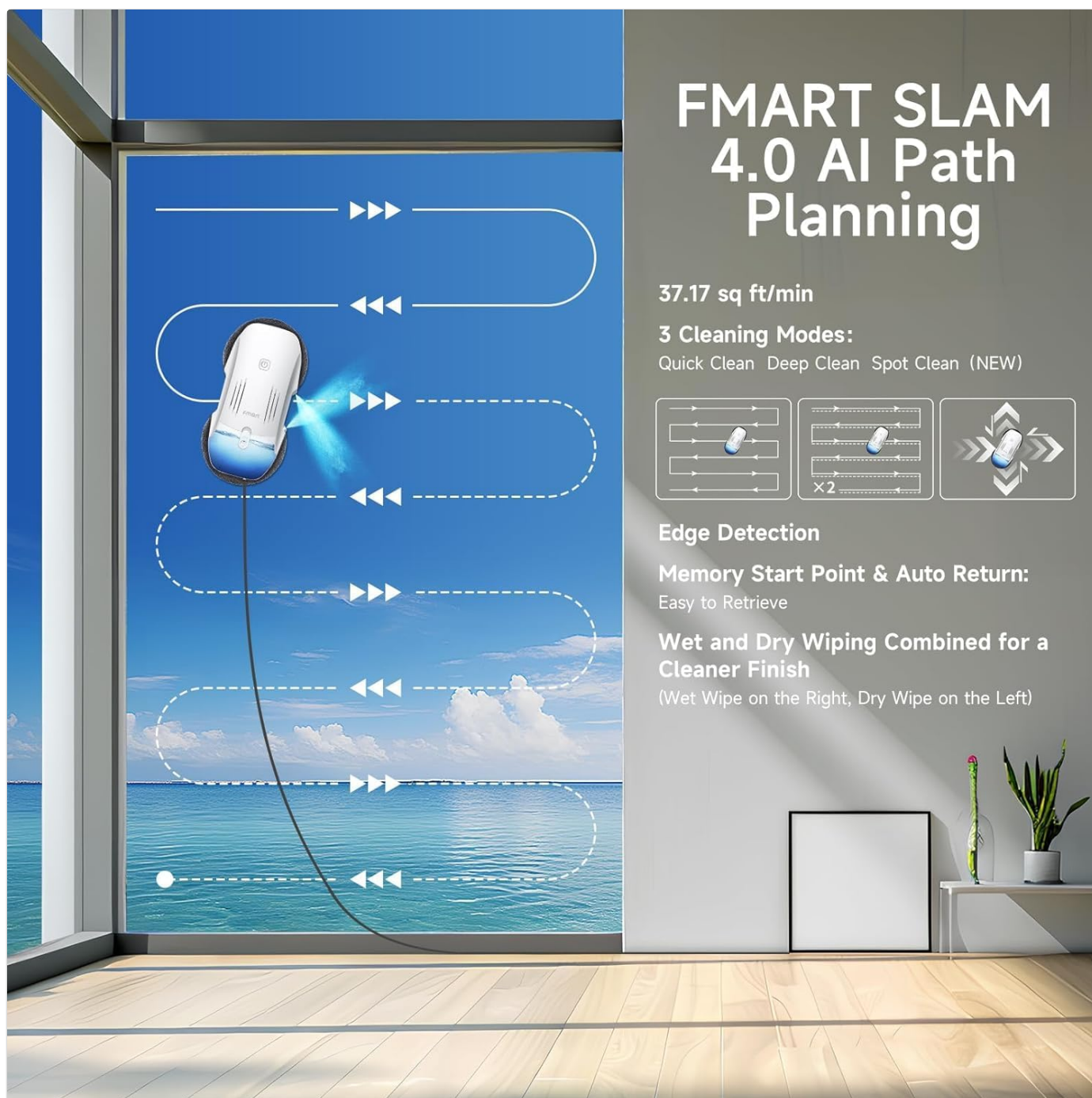


Figure 6: AI Path Planning and Edge Detection.

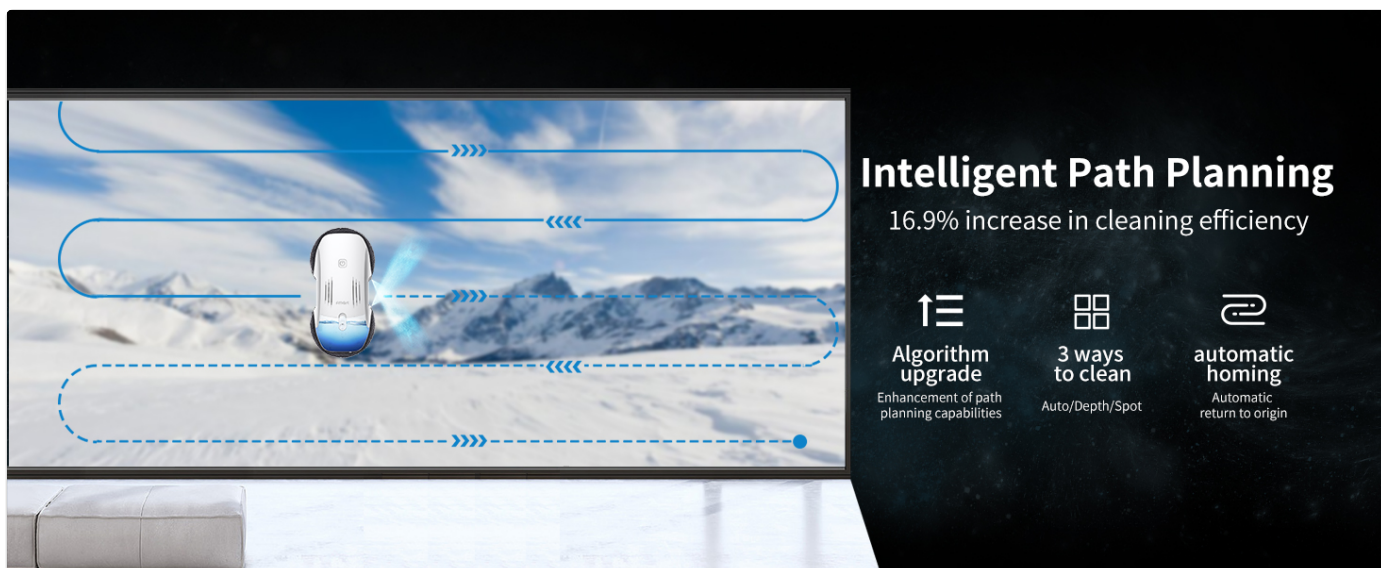


Figure 7: Intelligent Path Planning for increased efficiency.

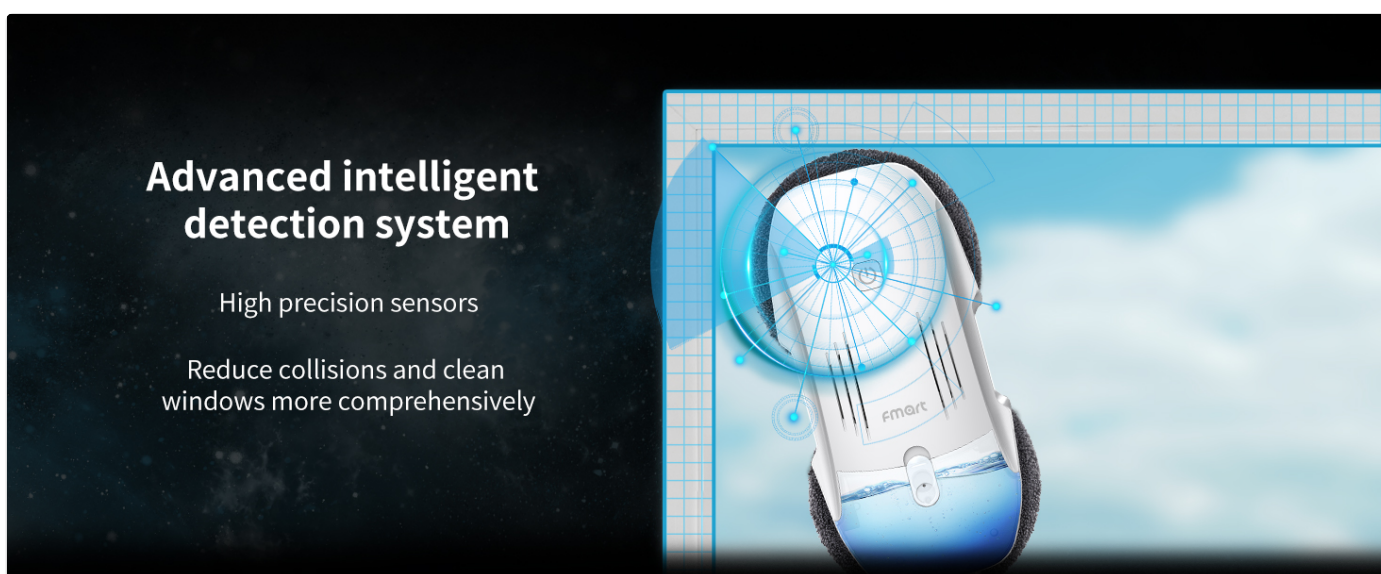


Figure 8: Advanced Intelligent Detection System.

Dual-Spray Technology

The cross-spray system with dual nozzles ensures both cleaning pads are evenly moist, effectively dissolving stubborn stains and maintaining consistent moisture throughout the cleaning process. The 120ml large water tank can clean up to 60 square meters on a single fill.

Water System Upgrade



120ml Visible Water Tank: Cleans up to **645 sq. ft.**

Upgraded Nozzle: Delivers an optimal spray range

Dual Cross-Spray: Evenly wets the cloth to capture more dust

Water Pump Spray: Prevents wind interference during outdoor cleaning

Figure 9: Water System Upgrade with Dual-Spray.

MAINTENANCE

Cleaning Pads

The microfiber cleaning cloths are professional customization, reusable, and machine washable. For optimal cleaning performance, clean the pads after each use.



Figure 10: Microfiber Cleaning Cloths.

Water Tank

Regularly empty and rinse the 120ml water tank to prevent residue buildup. Use only glass cleaner or purified water to avoid clogging the nozzles.

General Care

Wipe down the exterior of the robot with a soft, dry cloth. Store the robot in a cool, dry place when not in use.

TROUBLESHOOTING

This section provides guidance on common issues and their solutions based on the robot's indicator lights.

| Indicator Light Status | Meaning | Action |
|------------------------|-------------------------|---|
| Green light always on | Charging Complete | Device is fully charged. |
| Green light flashing | Charging | Device is currently charging. |
| Blue light always on | Working | Device is operating normally. |
| Red light always on | Low Battery | Please connect the adapter for charging before use. |
| Red light flashing | Abnormal in the machine | Please check the machine or restart it. |
| Yellow light flashing | Low Battery | The machine can be normally turned on only after its indicator light turns green by charging. |

Description of Power and Flashing Lights

Long press :

Start the device (power on)
Shut down the device (power off)

Short press:

Start working
Stop working

Short press three times continuously:

Enter the "network matching mode"



Green light always on

Charging Complete

Green light flashing

Charging



Red light always on

Low Battery

Please connect the adapter for charging before use

Red light flashing

Abnormal in the machine

Please check the machine or restart it



Yellow light flashing

Low Battery

The machine can be normally turned only after its indicator light turns green by charging

Figure 11: Description of Power and Flashing Lights.

SPECIFICATIONS

| Feature | Detail |
|---------------------|---|
| Brand | FMART |
| Model Name | T10PRO |
| Special Features | 120ml Water Tank, 2.4G remote control & APP control & 10 Language Translation, Anti-Fall, Dual-side Spray Cleaning, Edge Cleaning |
| Color | T10pro |
| Product Dimensions | 11.5"L x 5.69"W x 2.96"H |
| Included Components | Cloth |
| Filter Type | Cloth |
| Battery Life | 5 years |
| Power Source | Battery Powered |
| Form Factor | Flat |
| Item Weight | 5.58 pounds |
| Manufacturer | FMART |

WARRANTY AND SUPPORT

FMART is committed to providing high-quality products and excellent customer service.

- **Warranty:** Our products provide 365 days warranty.

- **Customer Support:** If you encounter any problems during use, please feel free to contact us via email. We will solve the problem for you as soon as possible within 24 hours.






Figure 12: FMART Customer Service.

© 2025 FMART. All rights reserved.

Related Documents - T10PRO

| | |
|--|---|
| | <p>Fmart W6 Window Cleaning Robot User Manual and Safety Guide</p> <p>Comprehensive user manual for the Fmart W6 Window Cleaning Robot, covering setup, operation, safety precautions, troubleshooting, and maintenance. Learn how to effectively clean your windows with this intelligent robotic cleaner.</p> |
| | <p>Robot Vacuum Cleaner T10 Pro User Manual - Setup, Operation, and Maintenance Guide</p> <p>Comprehensive user manual for the Robot Vacuum Cleaner T10 Pro, covering setup, operation, maintenance, safety instructions, and troubleshooting. Learn how to use your T10 Pro robot vacuum effectively.</p> |
| | <p>TUVACS T10 Pro Robot Vacuum Cleaner User Manual</p> <p>Comprehensive user manual for the TUVACS T10 Pro robot vacuum cleaner, detailing setup, operation, safety guidelines, maintenance procedures, and troubleshooting tips.</p> |

| | |
|---|--|
|  | <p>Fmart W6 Window Cleaning Robot User Manual</p> <p>Comprehensive user manual for the Fmart W6 window cleaning robot, covering safety precautions, installation, operation, maintenance, and troubleshooting.</p> |
|  | <p>SGIN T10 & T10Pro User Manual - Specifications and Features</p> <p>Comprehensive user manual for the SGIN T10 and T10Pro tablets, detailing specifications, features, buttons, connectors, accessibility options, and regulatory information. Learn about the Android 11 operating system, MediaTek MT8183 processor, display, camera, battery, and more.</p> |
|  | <p>TF-T10 Pro True Wireless Bluetooth Headset FCC Compliance Information</p> <p>FCC compliance details for the Shenzhen Qishun Innovation Technology Development Co., LTD TF-T10 Pro True Wireless Bluetooth Headset, covering Class B digital device regulations, interference correction measures, and RF exposure limits.</p> |

Documents - FMART – T10PRO



[\[pdf\]](#) Test Report

RADIO TEST REPORT BLE Manufacturer s Name Chongqing Fmart Technology Co Ltd Model and or type reference T10Pro T10 T11 T12 T13 T14 T15 220 JP7702 02 003 tele soumu go jp giteki SearchServlet2 PageID jt01 ATF 157330003 |||

...

lang: score:11 filesize: 1.75 M page_count: 47 document date: 0000-00-00