

## ONIDEK LDFS

# ONIDEK Floor Lamp with Fan (Model LDFS)

## Instruction Manual

### 1. INTRODUCTION

---

Thank you for choosing the ONIDEK Floor Lamp with Fan. This product combines a versatile LED floor lamp with an integrated fan, offering adjustable lighting, color temperature, RGB options, and fan speeds. It can be controlled via a remote or the integrated buttons on the lamp pole. This manual provides detailed instructions for assembly, operation, maintenance, and troubleshooting to ensure optimal performance and longevity of your device.

### 2. IMPORTANT SAFETY INSTRUCTIONS

---

**Please read all safety instructions carefully before use and retain this manual for future reference.**

- Always unplug the lamp from the power outlet before cleaning, performing maintenance, or moving it.
- Do not operate the lamp with a damaged cord or plug. If the cord or plug is damaged, contact customer support for assistance.
- Do not expose the lamp to water or moisture. Use only in dry indoor environments.
- Keep the fan blades clear of obstructions. Do not insert fingers or other objects into the fan grille.
- Ensure the lamp is placed on a stable, level surface to prevent tipping.
- Do not attempt to disassemble or repair the lamp yourself. Refer all servicing to qualified personnel.
- Keep out of reach of children and pets.

### 3. PACKAGE CONTENTS

---

Verify that all components are present and in good condition:

- Floor Lamp Assembly (Base, Pole Sections, Lamp Heads with Fans)
- Remote Control
- Power Adapter
- Instruction Manual (this document)

## 4. ASSEMBLY INSTRUCTIONS

---

Follow these steps to assemble your ONIDEK Floor Lamp with Fan:

1. **Connect the Tubes:** Carefully connect the threaded pole sections (tubes) together by twisting them clockwise until secure. Ensure the internal wiring passes freely through the connections.
2. **Pull Out Extra Wires:** Gently pull any excess internal wiring from the bottom of the lowest pole section to ensure it does not get pinched during base attachment.
3. **Screw the Tube into the Base:** Align the bottom pole section with the lamp base and screw it clockwise until it is firmly attached. Ensure the base is stable.
4. **Connect the Power Cord:** Insert the power adapter into the designated port on the lamp pole, then plug the adapter into a standard wall outlet.

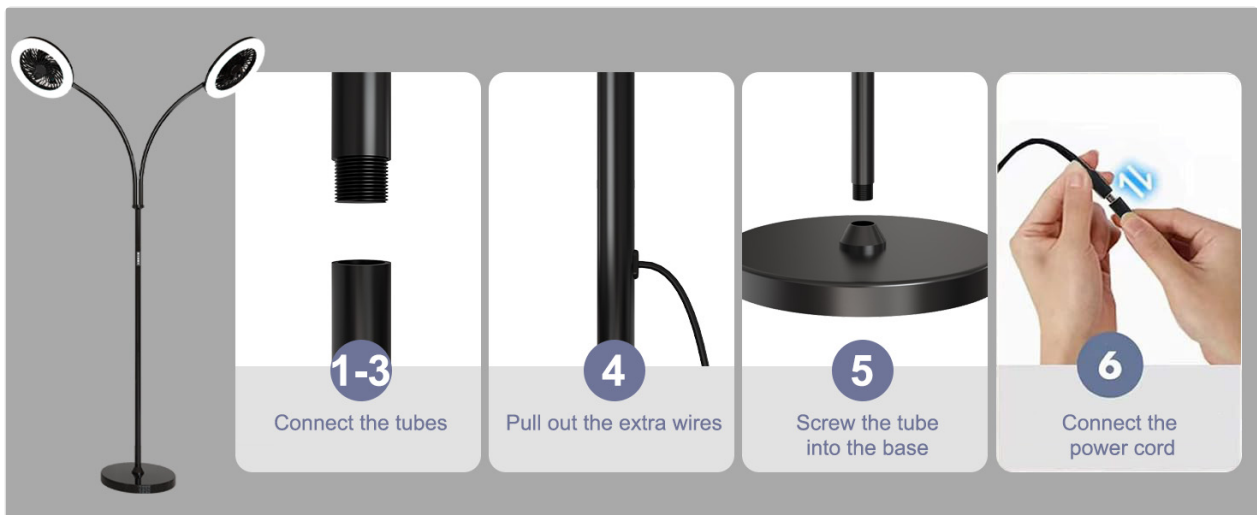


Image: Step-by-step visual guide for assembling the floor lamp, showing how to connect pole sections, manage wires, attach the base, and connect the power cord.

Once assembled, ensure all connections are secure and the lamp is stable before operation.

## 5. OPERATING INSTRUCTIONS

---

Your ONIDEK Floor Lamp with Fan can be controlled using the included remote control or the buttons located on the lamp pole.

### 5.1. Remote Control Functions

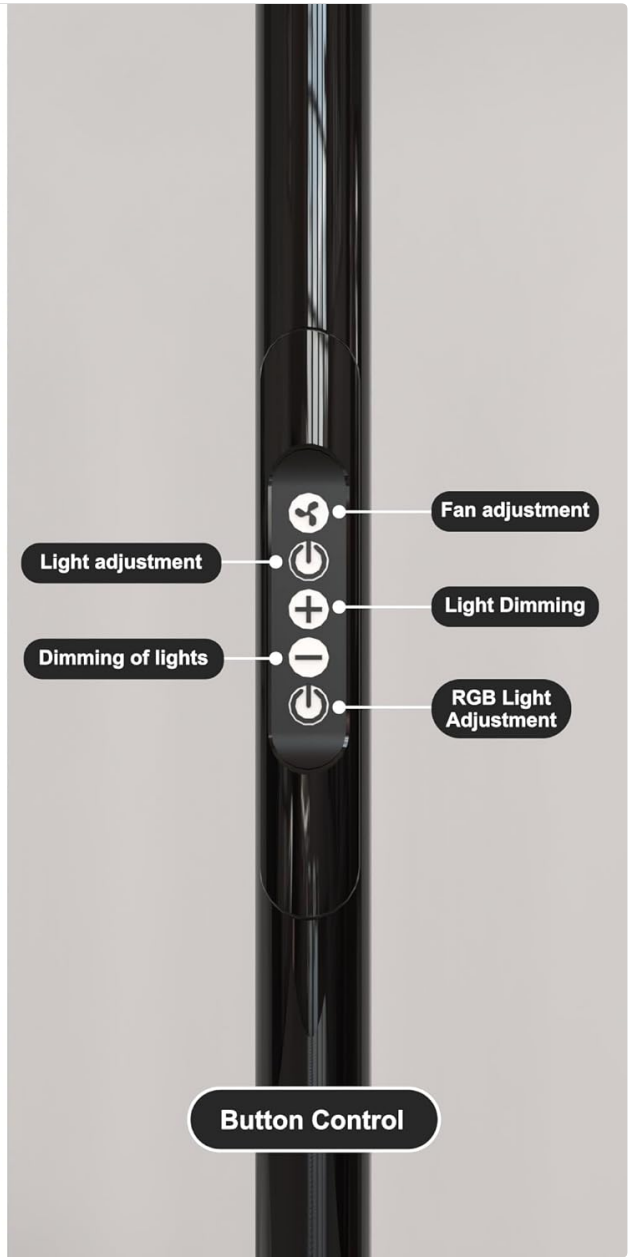


Image: Close-up view of the remote control and the button panel on the lamp pole, highlighting controls for light adjustment, dimming, fan adjustment, and RGB light adjustment.

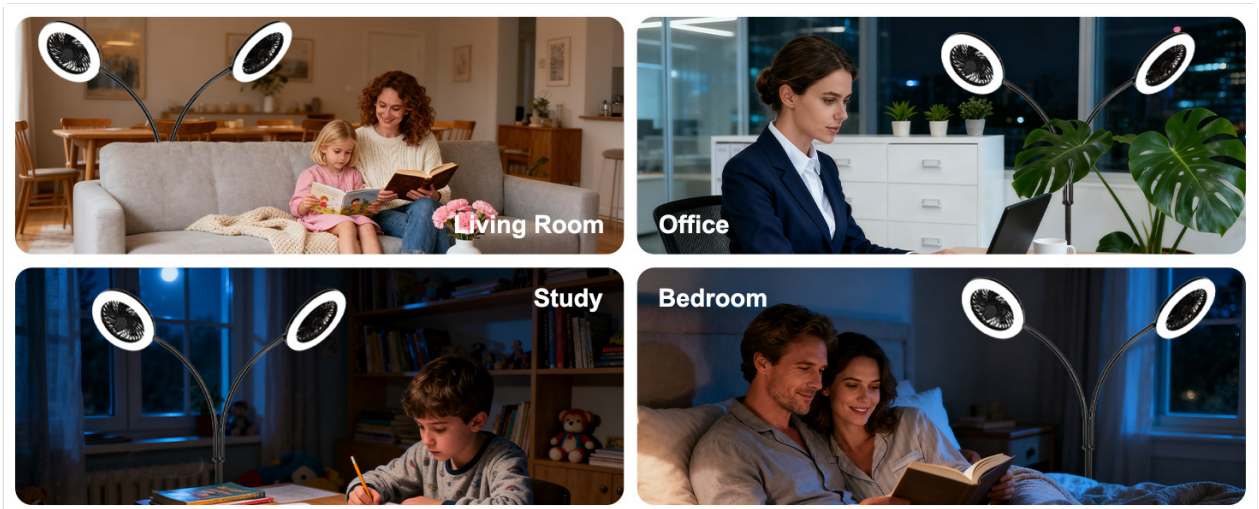


Image: Detailed diagram of the remote control, illustrating buttons for brightening, RGB color selection, fan speed settings, nightlight mode, and color temperature adjustments.

- **Power On/Off:** Press the **ON/OFF** button to turn the lamp and fan on or off.

- **Light Adjustment:**
  - **Brightness:** Use the **+** and **-** buttons to adjust brightness from 10% to 100%.
  - **Color Temperature:** Use the **3000K-6000K** buttons to cycle through warm white (3000K), neutral white (4500K), and cool white (6000K) settings.
  - **RGB Mode:** Press the **RGB** button to activate color-changing modes.
  - **Nightlight:** Press the **Nightlight** button for a soft, low-intensity light.
- **Fan Adjustment:** Use the **Fan Gear Setting** buttons to select desired fan speed.

## 5.2. Button Control on Lamp Pole

The lamp pole features integrated buttons for basic control:

- **Fan Adjustment:** Buttons to increase or decrease fan speed.
- **Light Adjustment:** Buttons to adjust light brightness or cycle through color temperatures.
- **RGB Light Adjustment:** Button to control RGB lighting modes.

## 5.3. Gooseneck Adjustment



Image: Illustration showing the 360° and 180° rotation capability of the lamp heads, along with a detail of the touch control

area.

The lamp heads are equipped with flexible goosenecks, allowing for 360° rotation and 180° vertical adjustment. This enables you to direct both the light and fan airflow precisely where needed. Some models may also feature a touch control area on the lamp head for quick adjustments.

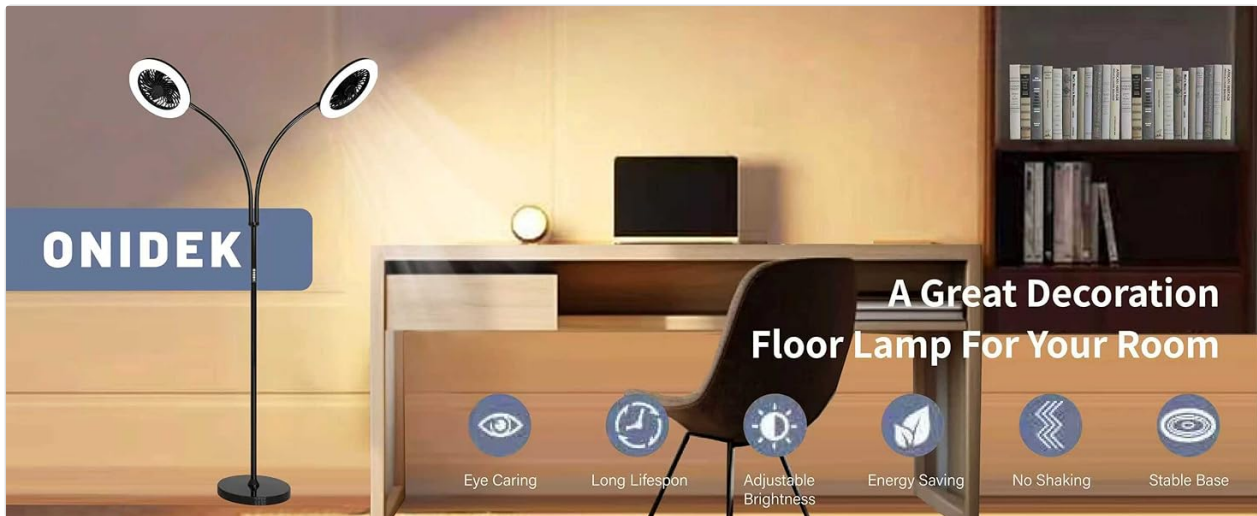


Image: Visual representation of the lamp's lighting capabilities, including RGB colors, and various white light color temperatures (5500K-6500K, 4500K-5500K, 3500K-4500K, 3000K-3500K), along with a brightness slider indicating 10%-100% dimmable brightness.

## 6. MAINTENANCE

To keep your ONIDEK Floor Lamp with Fan in optimal condition:

- **Cleaning:** Always unplug the lamp before cleaning. Use a soft, dry cloth to wipe down the lamp pole, base, and lamp heads. Do not use abrasive cleaners, solvents, or wet cloths, as these can damage the finish or electrical components.
- **Fan Blades:** Periodically check the fan grilles for dust accumulation. Use a soft brush or compressed air to gently remove dust from the fan blades.
- **Storage:** If storing the lamp for an extended period, unplug it and store it in a dry, cool place, protected from dust and moisture.

## 7. TROUBLESHOOTING

If you encounter issues with your lamp, refer to the following common problems and solutions:

Problem	Possible Cause	Solution
Lamp does not turn on.	No power, loose connection, remote battery dead.	Check if the power adapter is securely plugged into both the lamp and the wall outlet. Ensure the wall outlet is functional. Replace remote control batteries.
Fan does not operate.	No power, fan speed set to off, obstruction.	Verify power connection. Increase fan speed using remote or pole buttons. Check for any obstructions around the fan blades.

Problem	Possible Cause	Solution
Remote control is unresponsive.	Dead batteries, out of range, signal obstruction.	Replace remote control batteries. Ensure you are within range and there are no objects blocking the signal path to the lamp.
Light flickers or dims unexpectedly.	Unstable power supply, loose connection.	Ensure the power adapter is firmly connected. Try plugging the lamp into a different wall outlet.

## 8. SPECIFICATIONS

Feature	Detail
Brand	ONIDEK
Model Number	LDFS
Product Dimensions	11"D x 11"W x 72"H
Lamp Type	Floor Lamp
Light Source Type	LED
Wattage	12 watts
Color Temperature	3000K-6000K (Stepless Adjustable)
Brightness	10%-100% Dimmable
RGB Lighting	Yes
Control Method	Remote and Button Control
Gooseneck Adjustment	360° & 180° Rotation
Base Material	Alloy Steel
Shade Material	Alloy Steel
Material Type	Carbon Steel
Color	Black
Cordless	No

## 9. WARRANTY AND SUPPORT

### 9.1. Manufacturer's Warranty

This ONIDEK Floor Lamp with Fan is covered by **atwo-year manufacturer's warranty** from the date of

purchase. This warranty covers defects in materials and workmanship under normal use. It does not cover damage caused by misuse, accidents, unauthorized repairs, or normal wear and tear.

## **9.2. Customer Support**

For warranty claims, technical assistance, or any questions regarding your product, please contact the retailer where you purchased the item or the ONIDEK customer support team. Please have your purchase receipt and model number (LDFS) available when contacting support.

For the most up-to-date contact information, please refer to the product packaging or the official ONIDEK website.