

ZMYUXME G70F20CN1L-DG(B0), MEL651-lc17

Instruction Manual for ZMYUXME Microwave Oven Computer Board

Model: G70F20CN1L-DG(B0), MEL651-lc17

1. INTRODUCTION

This instruction manual provides essential information for the safe and effective installation, operation, and maintenance of your new ZMYUXME replacement computer board for Galanz microwave ovens. This board is compatible with models G70F20CN1L-DG(B0) and MEL651-lc17. Please read this manual thoroughly before attempting any installation or repair to ensure proper functionality and safety.

2. PRODUCT OVERVIEW

The ZMYUXME replacement circuit board is designed to restore full functionality to compatible Galanz microwave ovens. It includes both the control board with display and the power board components.

Key Features:

- Replacement circuit board for Galanz microwave ovens, ensuring optimal performance.
- Compatible with model G70F20CN1L-DG(B0), perfect for restoring functionality to your microwave.
- Durable construction and reliable components for long-lasting use in kitchen appliances.
- Ideal for repairing malfunctioning microwaves, saving time and money on costly replacements.

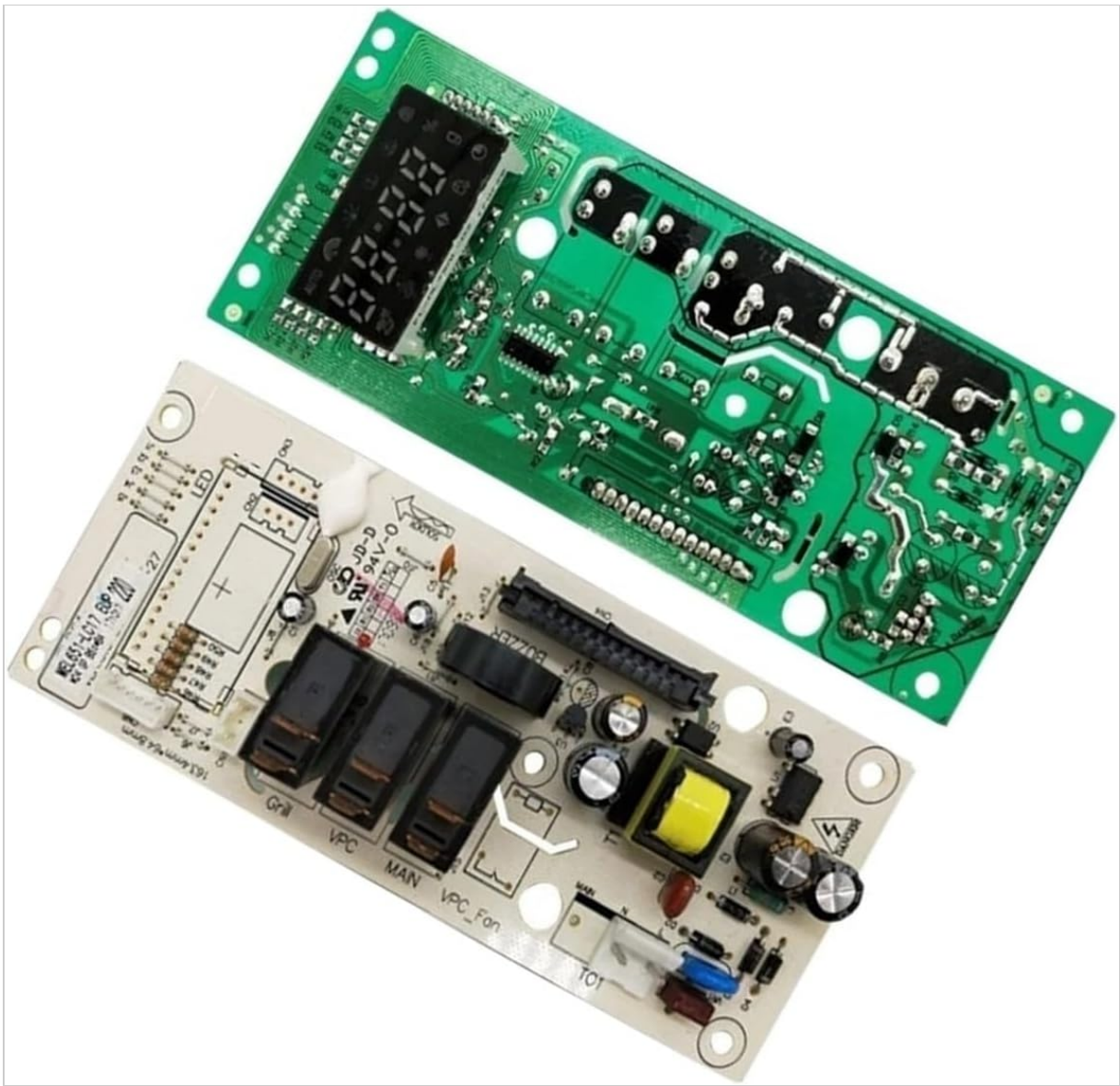


Figure 2.1: An overview of the ZMYUXME replacement computer board, featuring both the green control board with its digital display and the white power board with its array of relays, capacitors, and transformers. This image provides a comprehensive view of the complete replacement unit.

3. SAFETY INFORMATION

Working with electrical appliances, especially microwave ovens, can be hazardous. Always prioritize safety to prevent injury or damage to the appliance.

- **Disconnect Power:** Always unplug the microwave oven from the power outlet before beginning any repair or installation.
- **Discharge Capacitors:** Microwave ovens contain high-voltage capacitors that can store a lethal electrical charge even after being unplugged. It is crucial to discharge these capacitors safely before touching any internal components. If you are unfamiliar with this procedure, seek professional assistance.
- **Professional Installation Recommended:** Due to the high voltage and complex nature of microwave oven repairs, professional installation by a qualified technician is highly recommended.
- **Handle with Care:** Electronic components are sensitive to electrostatic discharge (ESD). Handle the circuit board by its edges and avoid touching the components directly.
- **Inspect for Damage:** Before installation, carefully inspect the new board for any visible damage. Do not install a damaged board.

4. SETUP AND INSTALLATION

This section outlines the general steps for replacing the microwave oven computer board. Specific procedures may vary depending on your microwave model. Refer to your microwave oven's service manual for detailed instructions.

1. Prepare the Microwave:

- Ensure the microwave oven is unplugged from the wall outlet.
- Remove any food or accessories from inside the microwave cavity.
- Carefully move the microwave to a clean, stable, and well-lit workspace.

2. Access the Control Panel/Board Area:

- Depending on your microwave model, you may need to remove the outer casing or specific screws to access the control panel and the existing circuit board.
- Take photos of the existing wiring connections before disconnecting anything. This will serve as a reference during reassembly.

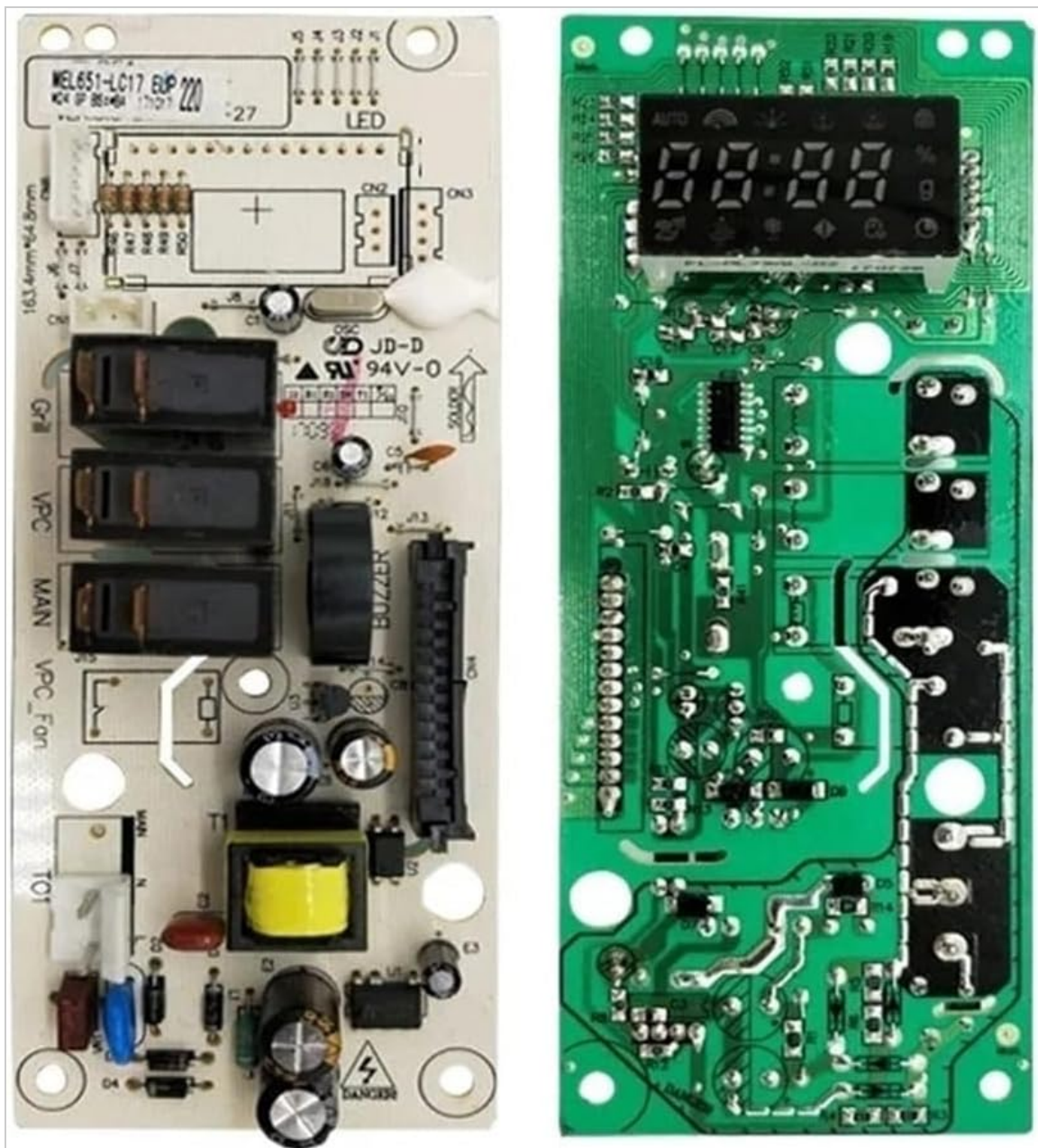


Figure 4.1: A detailed view of both the green control board and the white power board, highlighting various

connection points, relays, and integrated circuits. This image is useful for identifying specific connectors during the installation process.

3. Disconnect the Old Board:

- Carefully disconnect all wiring harnesses and ribbon cables from the old circuit board. Note their positions or refer to your photos.
- Remove any screws or clips securing the old board in place.
- Gently remove the old board from the microwave.

4. Install the New Board:

- Position the new ZMYUXME circuit board in the same location as the old one.
- Secure the new board with the appropriate screws or clips.
- Reconnect all wiring harnesses and ribbon cables to their corresponding ports on the new board. Ensure all connections are firm and correctly oriented. Refer to your photos taken earlier.

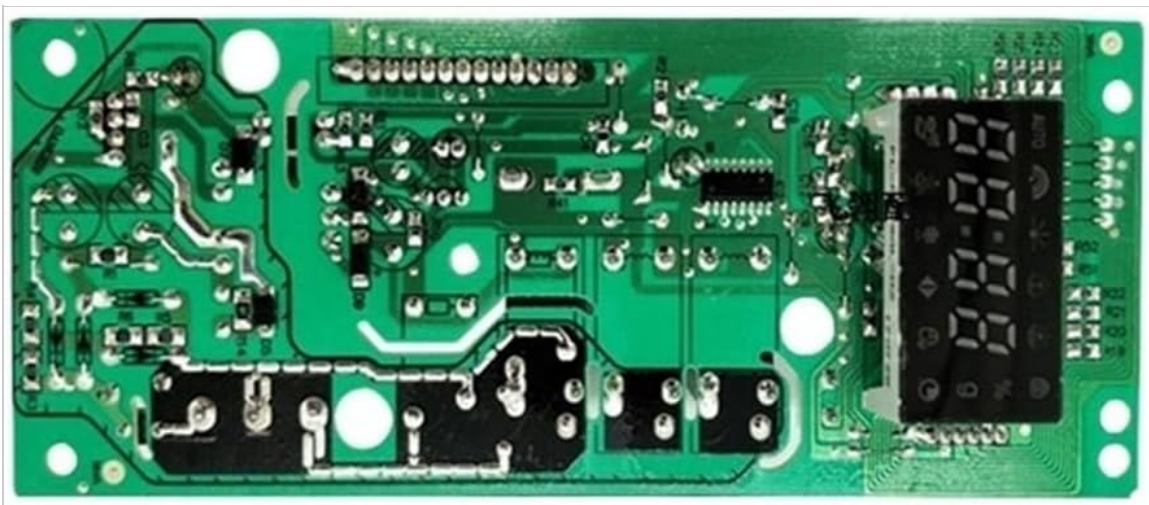


Figure 4.2: A close-up image of the green control board, which features the digital display and various surface-mounted components. This board is responsible for user input and display functions.

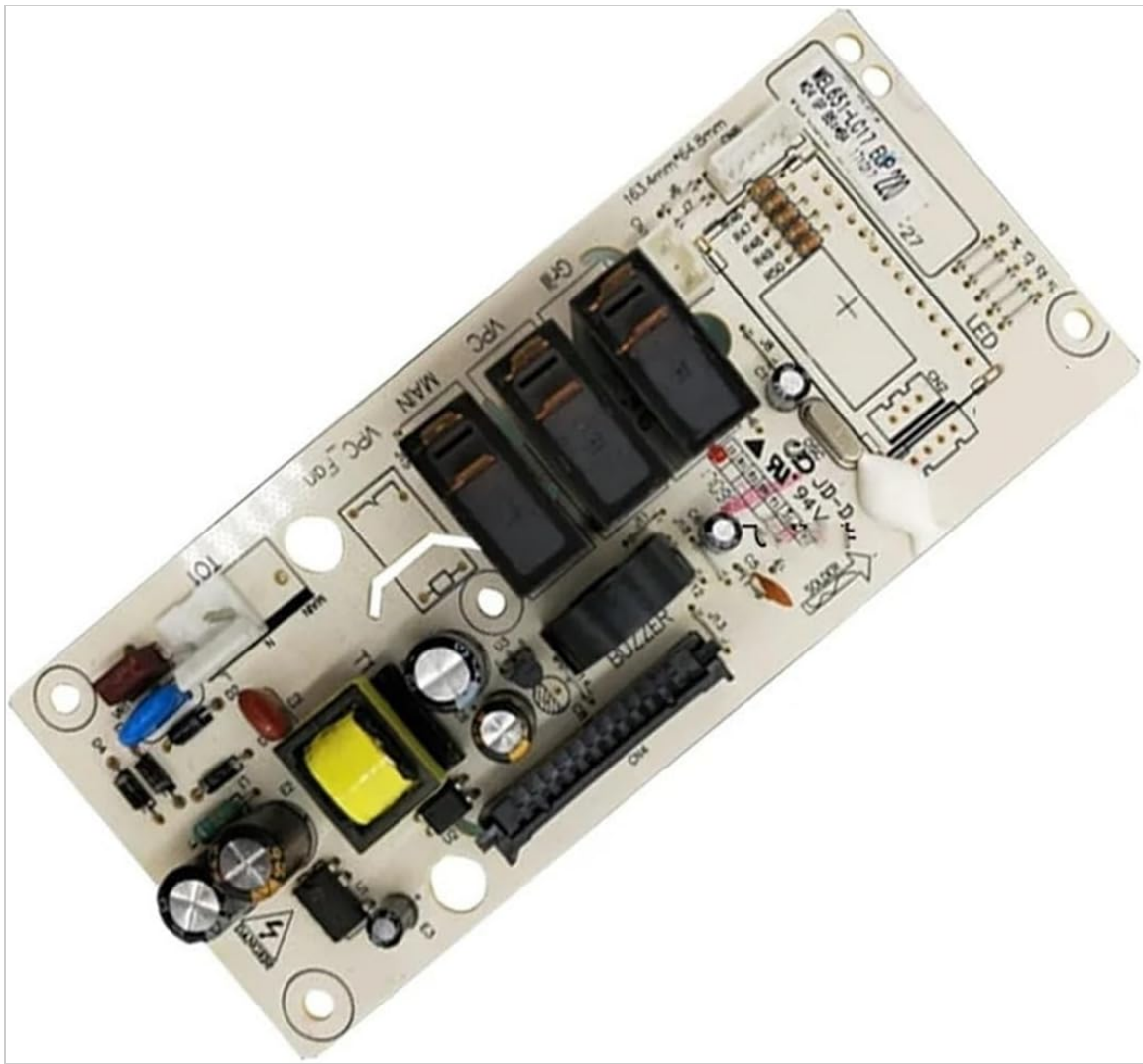


Figure 4.3: A close-up image of the white power board, showcasing its critical components such as relays, the yellow transformer, and various capacitors. This board manages power distribution and switching within the microwave.

5. Reassemble and Test:

- Before fully reassembling the microwave, perform a preliminary test. Plug the microwave back into the power outlet.
- Check if the display lights up and if basic functions (like setting time) are responsive.
- If everything appears to be working correctly, unplug the microwave again and reassemble the casing.
- Once fully reassembled, plug it back in and test all functions thoroughly.

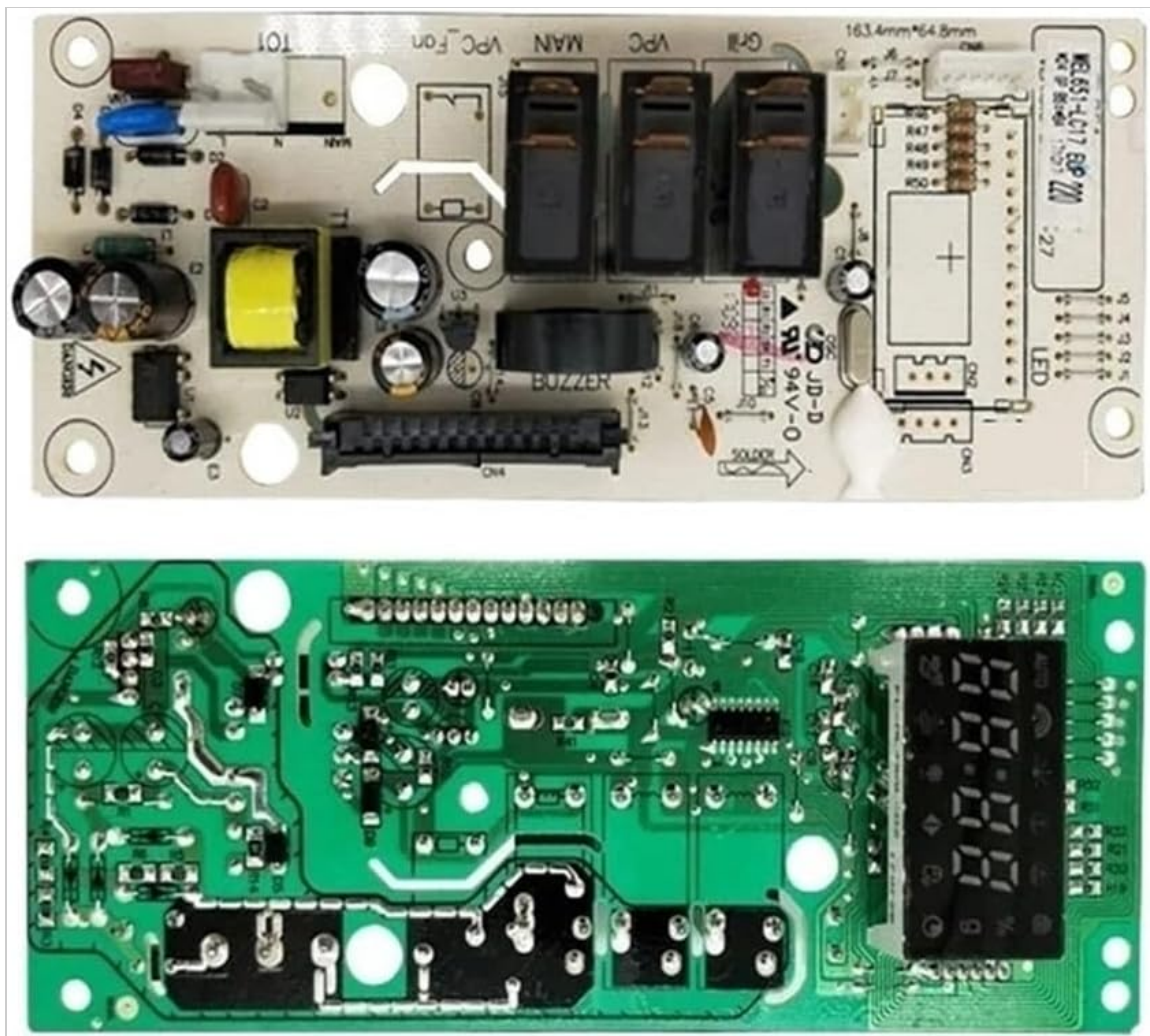


Figure 4.4: An alternative view of both the green control board and the white power board, illustrating their distinct layouts and the arrangement of their respective components. This perspective can aid in understanding the overall assembly.

5. OPERATING THE MICROWAVE (AFTER BOARD REPLACEMENT)

Once the new computer board is successfully installed, your microwave oven should operate as intended. Refer to your original microwave oven user manual for specific operating instructions. The replacement board facilitates the proper functioning of the microwave's control panel, heating elements, and other systems.

- **Power On:** Plug the microwave into a grounded electrical outlet. The display should illuminate.
- **Set Time:** Follow your microwave's instructions to set the current time.
- **Test Functions:** Test various functions such as microwave cooking, defrost, and any special features your model offers.

6. MAINTENANCE

The computer board itself requires no routine maintenance. However, general care for your microwave oven will help ensure the longevity of all its components, including the new board.

- **Keep Dry:** Ensure the microwave's interior and exterior, especially around the control panel, remain dry. Moisture can damage electronic components.
- **Clean Regularly:** Clean the microwave oven regularly according to its original user manual. Avoid using excessive water or harsh chemicals near the control panel area.

- **Ventilation:** Ensure the microwave's ventilation openings are not blocked to prevent overheating of internal components.

7. TROUBLESHOOTING

If you encounter issues after installing the new computer board, consider the following troubleshooting steps:

- **No Power/Display:**
 - Check if the microwave is securely plugged into a working outlet.
 - Verify the circuit breaker has not tripped.
 - Re-check all connections to the new board to ensure they are firm and correctly seated.
- **Incorrect Display/Buttons Unresponsive:**
 - Ensure the ribbon cable connecting the control panel to the main board is properly inserted and not damaged.
 - Power cycle the microwave (unplug for 30 seconds, then plug back in).
- **Microwave Not Heating:**
 - While the board controls the heating process, if the microwave still doesn't heat, other components (like the magnetron, diode, or transformer) might be faulty. This board replacement primarily addresses control and power board issues.
 - Ensure all power board connections are secure.
- **Unusual Noises or Smells:**
 - Immediately unplug the microwave.
 - Do not attempt to operate it. Seek professional service.

If these steps do not resolve the issue, it is recommended to consult a qualified appliance repair technician.

8. SPECIFICATIONS

Attribute	Value
Brand	ZMYUXME
Compatible Models	Galanz G70F20CN1L-DG(B0), MEL651-lc17
Item Weight	1.76 ounces
Package Dimensions	1.18 x 0.79 x 0.39 inches
Number of Pieces	1 (includes control and power board components)
Assembly Required	No (component assembly), Yes (installation into microwave)

9. WARRANTY AND SUPPORT

For specific warranty information regarding your ZMYUXME replacement computer board, please refer to the product listing or contact the seller directly. If you require technical assistance or have questions about

the product, please reach out to the ZMYUXME customer support team through the platform where the purchase was made.

Seller: zmy655

For general inquiries or to report issues, please visit the seller's page or contact customer service.