

Avamia HD888F

Avamia Ionic Hair Dryer - Model HD888F

User Manual

1. INTRODUCTION

Thank you for choosing the Avamia Ionic Hair Dryer. This manual provides essential information for the safe and efficient operation, maintenance, and troubleshooting of your new hair dryer. Please read this manual thoroughly before first use and keep it for future reference.

2. IMPORTANT SAFETY INSTRUCTIONS

WARNING: To reduce the risk of electric shock, fire, or injury to persons:

- Keep this appliance out of reach of children.
- Do not rinse or immerse the appliance in water or any other liquid.
- Keep the power plug and cord away from heated surfaces.
- Do not use the hair dryer while bathing or in wet environments.
- Always unplug the appliance immediately after use and before cleaning.
- Do not operate any appliance with a damaged cord or plug, or if the appliance malfunctions or has been dropped or damaged in any manner.
- Never block the air openings of the appliance or place it on a soft surface, such as a bed or couch, where the air openings may be blocked. Keep the air openings free of lint, hair, and the like.
- Always read the label, warnings, and instructions provided on the product packaging before using or consuming it.

3. PACKAGE CONTENTS

Ensure all items are present in the package:

- Avamia Ionic Hair Dryer Unit
- Magnetic Smoothing Nozzle
- Magnetic Diffusion Nozzle

- User Manual

4. PRODUCT FEATURES

- **High-Speed Brushless Motor:** Equipped with a 110,000 RPM brushless motor and 1800W power, delivering a wind speed of 23 m/s for quick drying.
- **Precise Styling Control:** Features 4 heat levels and 3 speed options, indicated by a 4-color LED ring for easy customization.
- **Advanced Ionic Technology:** Emits 200 million negative ions to reduce frizz, enhance shine, and maintain hair health.
- **Versatile Styling Attachments:** Includes 2 magnetic 360° rotating nozzles: a smoothing nozzle for sleek styles and a diffuser for defined curls and added volume.
- **Convenient and Safe Design:** Lightweight, compact, and travel-friendly, with safety features such as auto-cleaning, overheating protection, and constant temperature control.

5. SETUP

1. **Unpacking:** Carefully remove all components from the packaging.
2. **Attaching Nozzles:** The smoothing and diffusion nozzles attach magnetically to the front of the hair dryer. Simply align the nozzle with the outlet and it will snap into place.



Image: The Avamia hair dryer shown with its magnetic smoothing and diffusion nozzles detached, ready for use.

6. OPERATING INSTRUCTIONS

1. **Powering On/Off:** Plug the hair dryer into a suitable power outlet. Use the On/Off switch located on the handle to turn the device on or off.
2. **Adjusting Heat Settings:** Press the temperature control button to cycle through the 4 heat settings. The LED ring will change color to indicate the selected setting:
 - Green: Cold Shot Function
 - Blue: Cool
 - Yellow: Warm
 - Purple: Hot
3. **Adjusting Speed Settings:** Press the speed control button to select one of the 3 fan speeds: Low, Medium, or High.
4. **Using the Smoothing Nozzle:** Attach the flat smoothing nozzle for concentrated airflow, ideal for straightening and smoothing hair.
5. **Using the Diffusion Nozzle:** Attach the diffuser for gentle, even airflow, perfect for enhancing natural curls and adding volume.



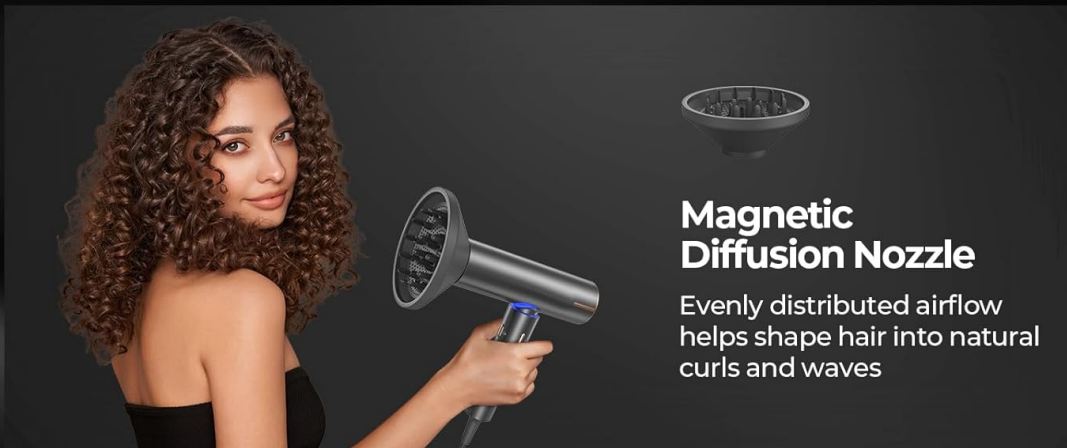
Image: Close-up of the hair dryer handle showing the power switch, temperature control button with LED indicators, and speed control button.

For All Hairstyles



Magnetic Smoothing Nozzle

Precise control of airflow for smooth styling



Magnetic Diffusion Nozzle

Evenly distributed airflow helps shape hair into natural curls and waves

Image: A woman drying her hair with the Avamia hair dryer, illustrating the release of negative ions for shinier, less frizzy hair.

7. MAINTENANCE

1. **One-Touch Self-Cleaning:** To deep clean the filter, press and hold the fan speed button for 6 seconds. The fan blades will automatically rotate in reverse to clear dust and debris from the filter.
2. **General Cleaning:** Ensure the hair dryer is unplugged and cool before cleaning. Wipe the exterior with a soft, damp cloth. Do not use abrasive cleaners or immerse the unit in water.
3. **Storage:** Store the hair dryer in a cool, dry place, away from moisture and direct sunlight. Ensure the cord is not wrapped tightly around the unit to prevent damage.

200 Million Negative Ions

Ionic Technology for Shinier, Less Frizzy Hair



Image: Diagram illustrating the internal fan mechanism and the button to activate the one-touch self-cleaning function.

8. TROUBLESHOOTING

If you encounter any issues with your Avamia Ionic Hair Dryer, please refer to the following common problems and solutions:

Problem	Possible Cause	Solution
Hair dryer does not turn on.	No power supply; power cord damaged; internal fault.	Check if the plug is securely inserted into the outlet. Inspect the power cord for damage. If damaged, discontinue use and contact customer support.
Low airflow or weak drying performance.	Air inlet/outlet blocked; filter needs cleaning.	Ensure air inlets and outlets are clear. Perform the one-touch self-cleaning function to clear the filter.
Hair dryer overheats and shuts off.	Overheating protection activated; blocked airflow.	Unplug the hair dryer and allow it to cool down for several minutes. Check and clean the air filter. Ensure air vents are not blocked during use.

If the problem persists after attempting these solutions, please contact Avamia customer support for assistance.

9. SPECIFICATIONS

- **Model:** HD888F
- **Brand:** Avamia
- **Power:** 1800W
- **Motor Speed:** 110,000 RPM
- **Wind Speed:** 23 m/s
- **Heat Settings:** 4 (Cold Shot, Cool, Warm, Hot)
- **Speed Settings:** 3 (Low, Medium, High)
- **Ionic Technology:** Yes (200 million negative ions)
- **Dimensions:** 5.3 x 17.1 x 23.1 cm
- **Weight:** 950 grams
- **Power Source:** Corded Electric

10. WARRANTY AND SUPPORT

For warranty information and customer support, please refer to the documentation included with your product packaging or visit the official Avamia website. If you require assistance, please have your model number (HD888F) and purchase details ready.