



[Manuals.plus](#) /

› [BOLUO](#) /

› [BOLUO White Dresser with Mirror, Fabric Dressers 6 Drawer Dresser for Bedroom with Charging Station, Vanity Dresser for Girls Modern User Manual](#)

BOLUO 6DMJBMI-W

BOLUO White Dresser with Mirror User Manual

Model: 6DMJBMI-W | Brand: BOLUO

1. INTRODUCTION

Thank you for choosing the BOLUO White Dresser with Mirror. This manual provides essential information for the safe assembly, operation, and maintenance of your new dresser. Please read these instructions carefully before beginning assembly and retain them for future reference.



Front view of the BOLUO White Dresser with Mirror, showcasing its six fabric drawers, white finish, and the integrated lighted vanity mirror on top. A charging cable extends from the front.

2. SAFETY INFORMATION

To ensure safe use of this product, please observe the following precautions:

- Always assemble the dresser on a soft, clean surface to prevent scratches.
- Ensure all screws and fasteners are securely tightened before use. Periodically check and re-tighten as necessary.
- Do not exceed the weight capacity: Each drawer supports up to 18 lbs. The top wood surface supports up to 50 lbs.

- Attach the dresser to a wall using the provided anti-tip kit to prevent accidental tipping, especially in households with children.
- Keep liquids away from the charging station to prevent electrical hazards.
- Do not attempt to modify the electrical components of the charging station or mirror.
- Keep small parts out of reach of children during assembly.

3. PACKAGE CONTENTS

Please verify that all components are present before beginning assembly. If any parts are missing or damaged, contact customer support.

- Dresser Frame Components
- 6 Fabric Drawers with Faux Leather Fronts
- Lighted Vanity Mirror
- Built-in Charging Station (pre-installed)
- Assembly Hardware (screws, bolts, Allen wrench)
- Adjustable Feet (4)
- Anti-tip Kit
- Instruction Manual

4. ASSEMBLY INSTRUCTIONS

Assembly is estimated to take approximately 30 minutes. Two people are recommended for easier assembly.

1. **Unpack and Identify Parts:** Carefully remove all components from the packaging. Lay them out on a clean, soft surface to prevent damage. Refer to the parts list in your separate assembly guide to identify each piece.
2. **Assemble the Frame:** Follow the step-by-step diagrams in your assembly guide to construct the main metal frame of the dresser. Ensure all connections are secure.
3. **Attach Top Panel:** Secure the water-resistant wood top panel to the assembled frame using the designated screws. The charging station is pre-installed in this panel.
4. **Insert Fabric Drawers:** Unfold each fabric drawer. Insert the bottom panel and the faux leather front panel into the drawer frame. Attach the handle to the front panel. Slide the assembled drawers into the dresser frame.
5. **Install Adjustable Feet:** Screw the four adjustable feet into the bottom of the dresser frame. Adjust them to ensure the dresser is level and stable on your floor.
6. **Position Mirror:** Place the lighted vanity mirror on the designated area of the dresser top. The mirror has 3 adjustable height levels.
7. **Secure with Anti-Tip Kit:** For safety, attach the anti-tip kit to the back of the dresser and to a wall stud, following the instructions provided with the kit.

Product Dimensions



Lighted
Makeup Mirror



Three levels are
adjustable

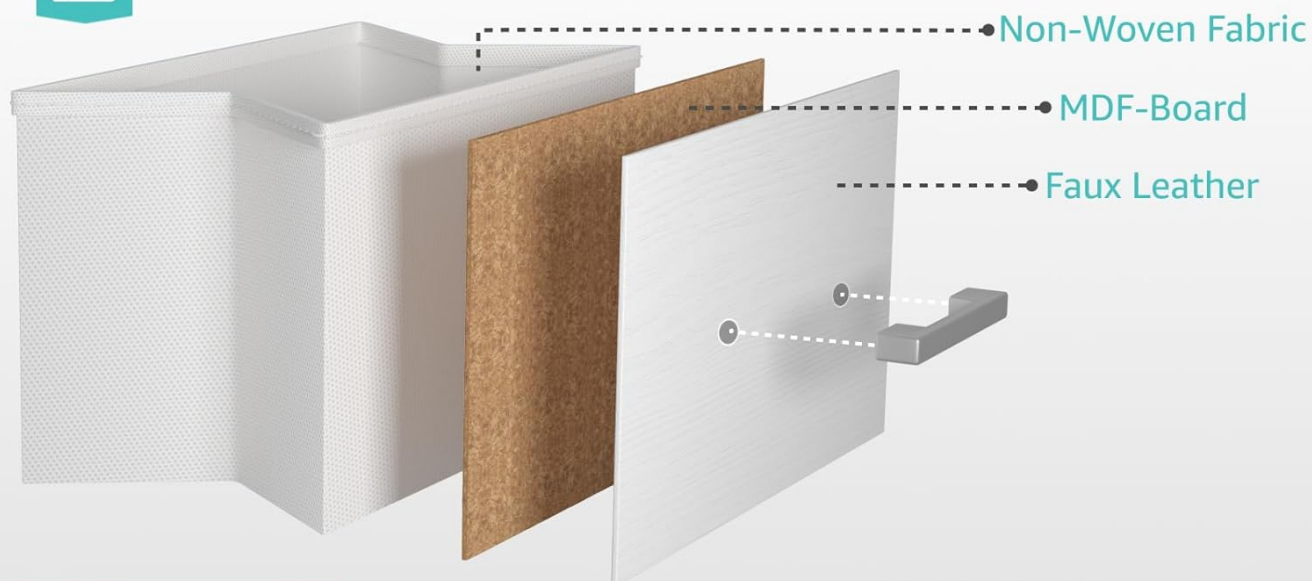


Diagram illustrating the key dimensions of the BOLUO White Dresser: 16.5 inches deep, 42.1 inches wide, and 34.2 inches high. The mirror's diameter is 15.7 inches, and the power cord length is 6.56 feet. Icons indicate the lighted makeup mirror and three adjustable height levels for the mirror.



Fabric Drawer with Leather Wood Grain

Soft material and more elegant look



Ours ✓



Others ✗



Others ✗

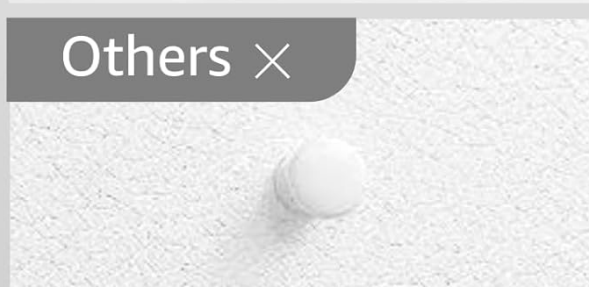


Diagram showing the construction of the fabric drawers, composed of Non-Woven Fabric, MDF-Board, and Faux Leather. It highlights the elegant faux leather front with wood grain.

5. OPERATING INSTRUCTIONS

5.1. Lighted Makeup Mirror

The round mirror features built-in LED lights with adjustable settings.

- **Power On/Off and Color Adjustment:** Short press the double function button on the mirror to cycle through light colors (Warm Light, Natural Light, Cold Light) and to turn the mirror on or off.
- **Brightness Adjustment:** Long press the double function button to adjust the brightness level from 10% to 100%. Release the button when the desired brightness is reached.
- **Height Adjustment:** The mirror can be adjusted to three different height levels to suit your preference.

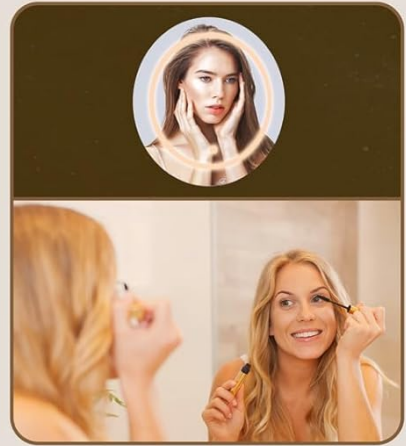
Adjusting Light Modes & Brightness At A Touch



Cool Light
Imitate office lighting



Natural Light
97% sunlight lighting



Warm Light
Imitate dining room lighting

Double Function Button :

Long Press to Adjust Brightness

Short Press to Adjust Color and Turn On/Off



Infographic detailing the adjustable light modes and brightness for the dresser's mirror. It shows Warm Light (3000K), Natural Light (4000K), and Cold Light (6000K) settings. A double function button allows long press for brightness adjustment and short press to adjust color and turn on/off.

5.2. Charging Station

The dresser includes a built-in power strip for convenient charging of electronic devices.

- **AC Outlets:** The charging station features two 125V/12A AC outlets. Plug in your devices requiring standard wall power.
- **USB Ports:** Two 5V/2A USB ports are available for charging smartphones, tablets, and other USB-powered devices.
- **Power Connection:** Ensure the dresser's power cord (approximately 5.9 feet long) is securely plugged into a functional wall outlet.



Built-in Power Strip

2 Outlets & 2 USB Ports



125V/12A
[2 AC outlets]



5V/2A
[2 USB Ports]



5.9-FT
[Power Cord]

Close-up view of the built-in power strip on the dresser's top surface, featuring two AC outlets and two USB ports. Specifications for the power strip are shown: 125V/12A for AC outlets, 5V/2A for USB ports, and a 5.9-foot power cord.

6. MAINTENANCE AND CARE

- **Cleaning the Frame and Top:** Wipe the metal frame and water-resistant wood top with a soft, damp cloth. Avoid harsh chemicals or abrasive cleaners.
- **Cleaning Fabric Drawers:** For light cleaning, use a soft brush or vacuum cleaner to remove dust. For stains, gently spot clean with a mild fabric cleaner and a damp cloth. Allow to air dry completely. Do not machine wash.
- **Mirror Care:** Clean the mirror surface with a glass cleaner and a lint-free cloth. Avoid spraying cleaner directly onto the LED lights or electrical components.
- **Regular Checks:** Periodically inspect all screws and connections to ensure they remain tight. Re-tighten if necessary.
- **Avoid Overloading:** Do not place excessively heavy items in drawers or on the dresser top to prevent damage or instability.

7. TROUBLESHOOTING

Problem	Possible Cause	Solution
Mirror light does not turn on.	Power cord not plugged in; loose connection; mirror button malfunction.	Ensure power cord is fully plugged into a working outlet. Check mirror's power connection. Try short pressing the button multiple times.
Charging station not working.	Dresser power cord unplugged; wall outlet not functional; device cable faulty.	Verify dresser power cord is plugged in. Test wall outlet with another device. Try a different charging cable for your device.
Drawers are difficult to open/close.	Overloaded drawer; uneven floor; drawer not assembled correctly.	Reduce weight in the drawer. Adjust the dresser's feet to ensure it is level. Re-check drawer assembly.
Dresser feels wobbly.	Uneven floor; loose screws; anti-tip kit not installed.	Adjust the adjustable feet to level the dresser. Tighten all assembly screws. Install the anti-tip kit as instructed.

8. SPECIFICATIONS

- **Brand:** BOLUO
- **Model Name:** 6DMJBMI-W
- **Product Dimensions:** 16.5"D x 42.1"W x 34.2"H
- **Color:** White
- **Room Type:** Bedroom
- **Assembly Required:** Yes
- **Item Weight:** 43.9 pounds
- **Drawer Capacity:** Up to 18 lbs per drawer
- **Top Surface Capacity:** Up to 50 lbs
- **Charging Station:** 2 AC Outlets (125V/12A), 2 USB Ports (5V/2A)
- **Power Cord Length:** Approximately 5.9 feet (6.56 feet mentioned in image)
- **Mirror Features:** Lighted, 3-mode lighting (Warm, Natural, Cold), 3 adjustable height levels

9. WARRANTY AND SUPPORT

For warranty information or customer support, please refer to the documentation included with your purchase or contact the BOLUO customer service department. Keep your purchase receipt for warranty claims.