

New Sight Lighting LJC-LSWP-828N-50-11-1PK

# 28W LED Wall Pack Light Instruction Manual

Model: LJC-LSWP-828N-50-11-1PK | Brand: New Sight Lighting

## PRODUCT OVERVIEW

The New Sight Lighting 28W LED Wall Pack Light is a high-performance outdoor lighting fixture designed for durability and energy efficiency. Featuring an integrated dusk-to-dawn photocell sensor, it automatically illuminates at night and turns off at dawn, providing reliable security lighting. Its robust die-cast aluminum body and clear PC lens ensure longevity and resistance to harsh outdoor conditions.



Figure 1: Front view of the 28W LED Wall Pack Light.



Figure 2: Overview of key product features including 3080 lumens, 5000K daylight, 120V/60Hz operation, and 28W power consumption.

## SETUP AND INSTALLATION

This LED wall pack light is designed for straightforward installation. It is UL and FCC certified, ensuring compliance with safety and performance standards. The fixture can be installed on walls 6-8 feet high and adapts to a 4-inch round junction box (not included).

### Installation Steps:

1. Unscrew the back conduit cap with a screwdriver and loosen housing side screws.
2. Remove the housing back plate and drill through holes for mounting.
3. Remove the protective film from the foam gasket (included) and stick it to the housing back plate for a secure seal.
4. Mount the housing back plate to the surface or junction box (not included) and secure with screws and anchors.

5. Use the provided screws to install the light to the junction box.
6. Fasten the lamp lens to the back plate with the side screws.

## EASY TO INSTALL

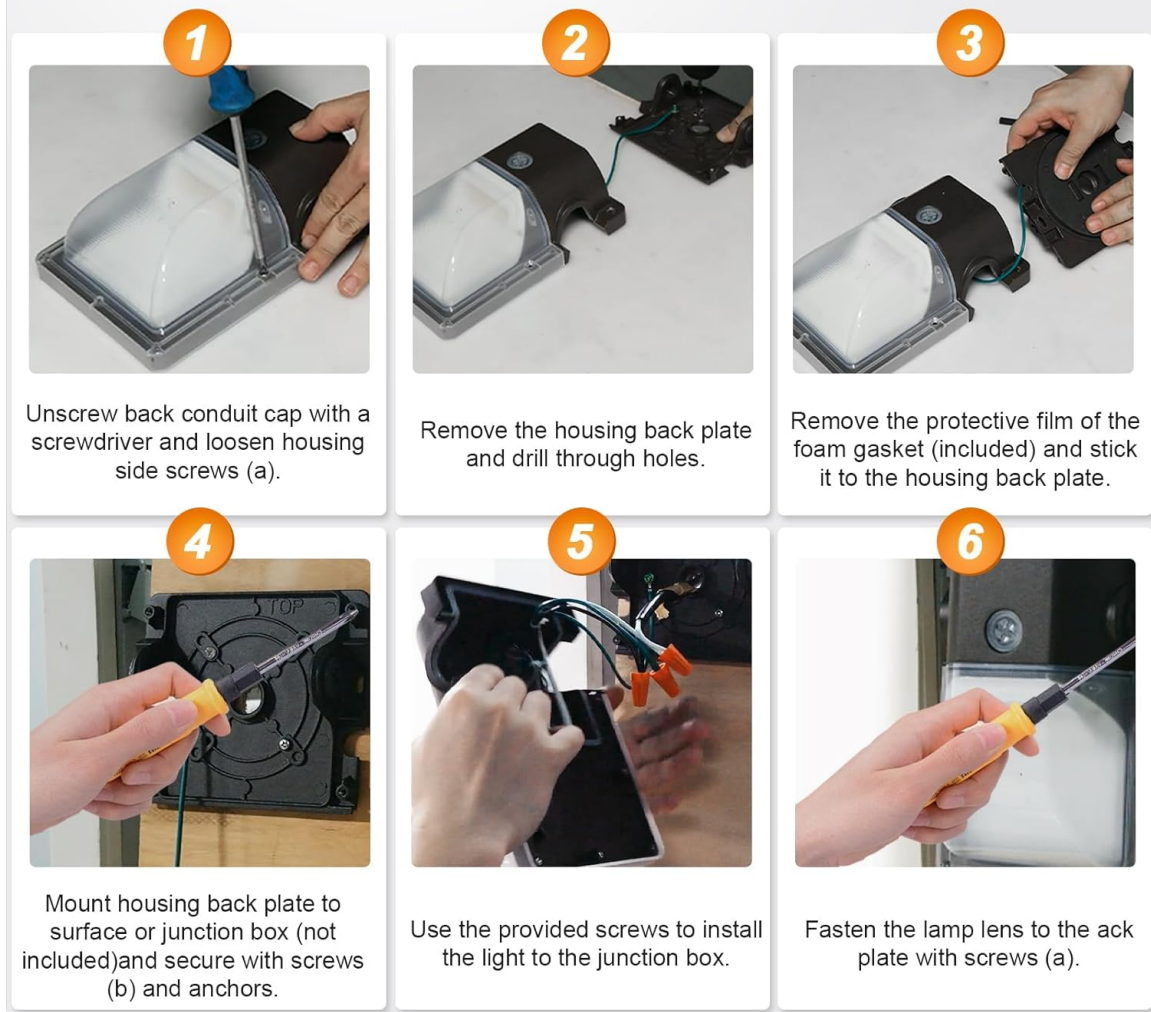


Figure 3: Visual guide for the installation process.

### Wiring Options:

The fixture offers multiple wiring options. Conduit pipes can be routed through the side entries or directly through the back. The back plate is removable to access wiring connections. A 3M tape rubber gasket is provided to ensure a seal against an electrical box or building surface, preventing moisture ingress. For direct wiring, Romex connectors can be used to secure the wiring within the fixture.

### Recommended Mounting Height:

For optimal illumination, the recommended mounting height is between 3.3 feet and 9.8 feet. At 9.8 feet, the light can cover an area of approximately 259 square feet.





Figure 4: Illustration of recommended mounting height and corresponding light coverage.

## OPERATING INSTRUCTIONS

---

The 28W LED Wall Pack Light features an automated dusk-to-dawn photocell sensor for convenient, hands-free operation.

### Dusk-to-Dawn Functionality:

The integrated photocell sensor detects ambient light levels. The light will automatically turn ON at sundown/night and turn OFF at sunrise/daytime. This feature makes it ideal for outdoor security lighting, eliminating the need for manual operation.



Figure 5: Visual representation of the dusk-to-dawn sensor's automatic operation.

### Light Output:

The fixture provides 3080 lumens of bright, 5000K daylight illumination. It is non-dimmable, ensuring consistent light output.

## MAINTENANCE

The New Sight Lighting LED Wall Pack is designed for minimal maintenance and long-term reliability.

### Durability and Longevity:

- Constructed with a die-casting aluminum housing and clear lens, it is IP65 waterproof, making it suitable for wet environments. Continuous exposure to wet conditions will not negatively affect its life expectancy.
- The fixture is UV resistant, preventing color change even after prolonged UV irradiation.
- Excellent heat dissipation is achieved through the integral Die-Casting aluminum heating sink, ensuring a long lifespan for the LEDs.
- The energy-efficient LEDs have a lifespan of over 50,000 hours, eliminating the need for frequent



bulb replacements.



Figure 6: Highlighting the IP65 waterproof rating and robust construction.

## TROUBLESHOOTING

---

If you encounter issues with your LED Wall Pack Light, please refer to the following common troubleshooting steps:

- **Light Not Turning On:**
  - Ensure the power supply is connected and active. Check circuit breakers.
  - Verify wiring connections are secure and correct according to the installation guide.
  - Check the photocell sensor. If it's daytime or there's sufficient ambient light, the sensor will keep the light off. Cover the sensor temporarily to simulate darkness and see if the light turns on.
- **Light Flickering or Dim:**
  - Confirm the voltage supply matches the fixture's requirements (120V).

- Ensure the fixture is not connected to a dimmer switch, as it is non-dimmable.
- Check for loose wiring connections.

- **Light Stays On During Daytime:**

- The photocell sensor may be obstructed or receiving insufficient light. Ensure it is clear of debris and not in a shaded area during the day.
- External light sources (e.g., other bright lights, streetlights) might be interfering with the sensor. Relocate the fixture if possible or shield the sensor from direct external light.

If these steps do not resolve the issue, please contact customer support.

## SPECIFICATIONS

Feature	Detail
Brand	New Sight Lighting
Model Name	dusk to dawn outdoor lighting
Item Model Number	LJC-LSWP-828N-50-11-1PK
Wattage	28 watts
Brightness	3080 Lumen
Color Temperature	5000 Kelvin (Daylight)
Voltage	120 Volts
Material	Die-cast Aluminum Body with PC Cover
Water Resistance Level	IP65 Waterproof
Lifespan	Over 50,000 hours
Product Dimensions	5.67"L x 2.82"W x 8.33"H
Item Weight	1.32 Pounds
Special Feature	Dusk to Dawn Sensor, Energy Efficient
Certifications	UL Listed, FCC Certified

## WARRANTY AND SUPPORT



The New Sight Lighting 28W LED Wall Pack Light comes with a **3-year manufacturer warranty**. This warranty covers defects in materials and workmanship under normal use.

For technical support, warranty claims, or any questions regarding your product, please contact New Sight Lighting customer service through the retailer's platform or visit our official website for contact information.

## APPLICATIONS

This versatile LED wall pack light is suitable for a wide range of outdoor applications, providing bright and reliable illumination for enhanced safety and visibility.



Figure 7: Examples of common applications including garages, porches, and front doors.

