

AV Access iDock-C10-US

AV Access iDock C10 KVM Switch and Dual Monitor Docking Station User Manual

Model: iDock-C10-US

Brand: AV Access

1. INTRODUCTION

The AV Access iDock C10 is a versatile KVM switch and 12-in-1 docking station designed to streamline your workspace. It allows you to control two computers (one laptop via USB-C and one desktop via HDMI/DisplayPort/USB-B) with a single set of peripherals and share two monitors. This manual provides detailed instructions for setup, operation, and maintenance of your iDock C10.



Figure 1: AV Access iDock C10 KVM Switch and Docking Station with included cables.

Video 1: Overview of the iDock C10 KVM Switch and Docking Station functionality.

2. PACKAGE CONTENTS

Verify that all items are present in the package:

- 1x KVM Switch with Docking Station (iDock C10)
- 1x Power Adapter (20V/6A)
- 1x USB-C to USB-C cable (USB 3.2 Gen 2, 3ft)
- 1x USB-A to USB-B cable (USB 3.0, 5ft)
- 1x HDMI 2.0 cable (5ft)
- 1x DisplayPort 1.2a cable (5ft)
- 1x User Manual

3. PRODUCT OVERVIEW

3.1 Front Panel

The front panel provides convenient access for connecting various peripherals:

- 2x USB 2.0 ports (for keyboard and mouse)
- 1x USB-C port (for charging and data transfer)
- 1x 3.5mm Headset Jack
- 1x SD Card Slot
- Power Button and Indicator Lights

3.2 Rear Panel

The rear panel houses the primary connections for your computers and monitors:

- 1x LAN (Ethernet) port
- 1x USB-C IN (for Laptop connection)
- 1x USB-B IN (for Desktop connection)
- 1x DisplayPort IN (for Desktop video input)
- 1x HDMI IN (for Desktop video input)
- 2x HDMI OUT (for Monitor connections)
- 3x USB 3.0 ports (for high-speed peripherals)
- 1x Toslink OUT (optical audio output)
- 20V Power Input

Connection Diagram

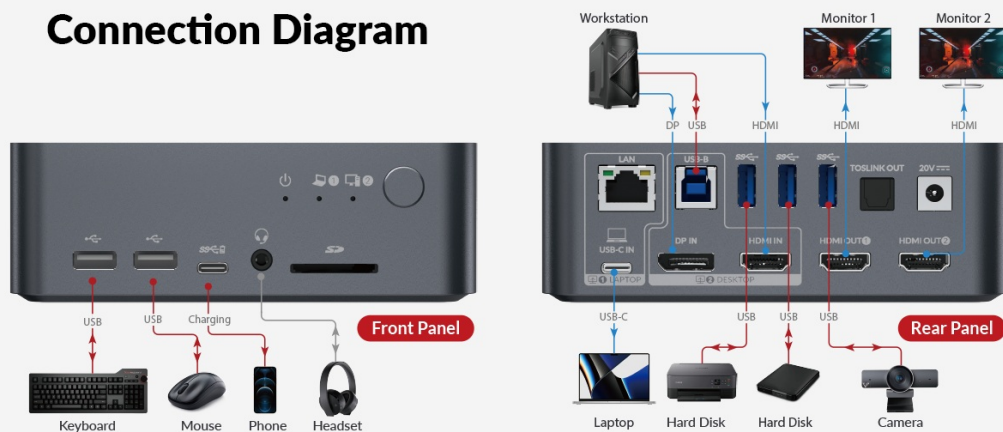


Figure 2: Connection Diagram of the iDock C10, illustrating front and rear panel ports.

4. SETUP INSTRUCTIONS

Follow these steps to set up your AV Access iDock C10:

1. **Connect Monitors:** Connect your two monitors to the HDMI OUT 1 and HDMI OUT 2 ports on the rear panel of the iDock C10 using the provided HDMI cables.
2. **Connect Desktop PC:**
 - Connect the USB-B cable from your desktop PC to the USB-B IN port on the iDock C10.
 - Connect the DisplayPort cable from your desktop PC to the DP IN port on the iDock C10.
 - Connect an HDMI cable from your desktop PC to the HDMI IN port on the iDock C10.
3. **Connect Laptop:** Connect the USB-C to USB-C cable from your laptop to the USB-C IN port on the iDock C10. Ensure your laptop's USB-C port supports video output and data transfer.
4. **Connect Peripherals:** Connect your keyboard to the dedicated USB 2.0 keyboard port, your mouse to the dedicated USB 2.0 mouse port, and other USB peripherals (e.g., webcam, external drives) to the USB 3.0 ports on the front or rear panel. Connect your headset to the 3.5mm jack.
5. **Connect Ethernet (Optional):** If wired network is desired for your laptop, connect an Ethernet cable from your router/modem to the LAN port on the iDock C10.
6. **Power On:** Connect the provided power adapter to the 20V power input on the rear panel of the iDock C10, then plug the adapter into a power outlet. Press the power button on the front panel to turn on the device.



Figure 3: Connecting a desktop PC to the iDock C10.

Video 2: Step-by-step guide on how to install the iDock C10 KVM Docking Station.

5. OPERATING INSTRUCTIONS

5.1 Switching Between Computers

To switch between your connected laptop and desktop PC, simply press the dedicated switch button on the front panel of the iDock C10. The device features EDID emulation and automatic PC wake-up for fast and efficient switching, typically taking 2-3 seconds.



Figure 4: Fast switching between PCs using the front panel button.

5.2 Display Modes

The iDock C10 supports various display configurations:

- **Windows:** Supports extended, mirrored, or single-display modes across two monitors.
- **macOS:** Only supports mirrored output across two monitors. Multi-Stream Transport (MST) is not supported on macOS via the USB-C port for extended display mode.

Multiple Display Modes

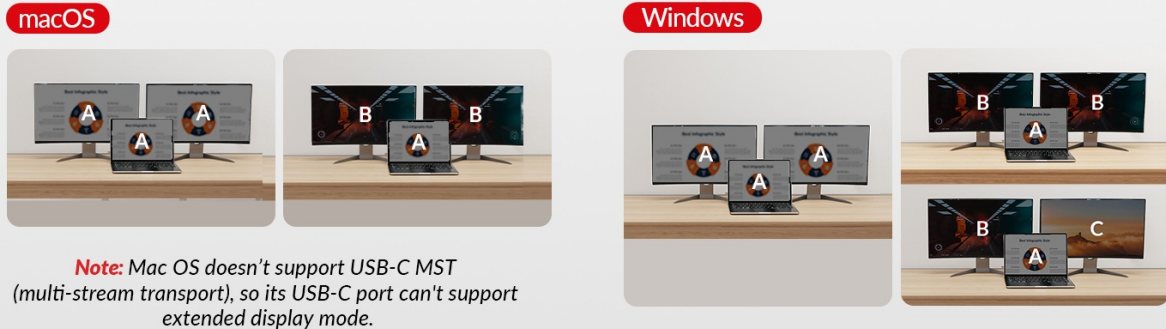


Figure 5: Multiple Display Modes for macOS and Windows.

6. KEY FEATURES

- **Outstanding Picture Quality:** Supports up to 4K@60Hz 4:4:4, and high refresh rates such as 1080P@240Hz/165Hz/144Hz/120Hz, and 2560×1440@144Hz/120Hz, compliant with HDMI 2.0, DisplayPort 1.2 & DisplayPort 1.4a (USB-C).
- **Full-Featured USB-C:** The USB-C port transfers data up to 20Gbp/s and charges your laptop with up to 60W. It also supports dual 4K UHD video pass-through.
- **Stable Gigabit Ethernet:** Provides a reliable wired network connection for your laptop.
- **EDID Emulation:** Ensures desktop icons and window arrangements remain consistent after switching, preventing screen flickering and window cramming.
- **Automatic PC Wake-up:** When switching to a PC in sleep mode, you do not need to manually wake it up.
- **Versatile Connectivity:** Includes 3x USB 3.0, 2x USB 2.0, 1x USB-C, 1x SD card, 1x LAN, 1x Toslink out, and 1x 3.5mm headset jack.

Advanced EDID Emulation Function

No desktop icon rearrangement, no screen flickering. All windows won't cram into the main monitor.

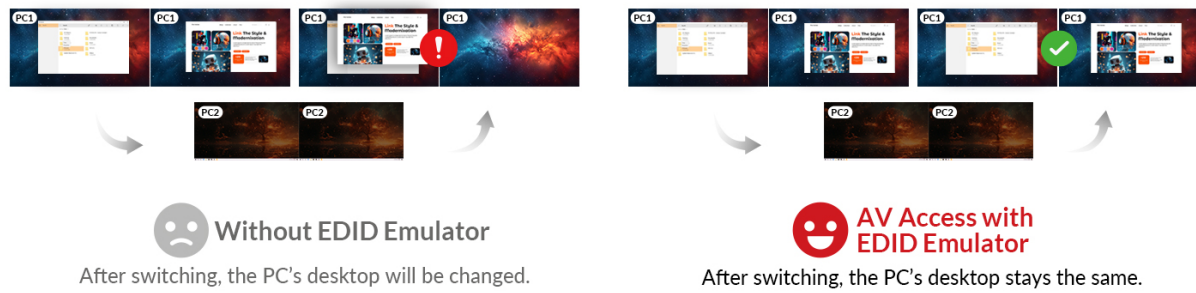


Figure 6: Advanced EDID Emulation Functionality.



Figure 7: PD 60W Fast Charging capabilities.

Ultra-High Refresh Rate

Supports 1080P@240/165Hz, 2560×1440@144/120Hz, ideal for high-speed racing games.

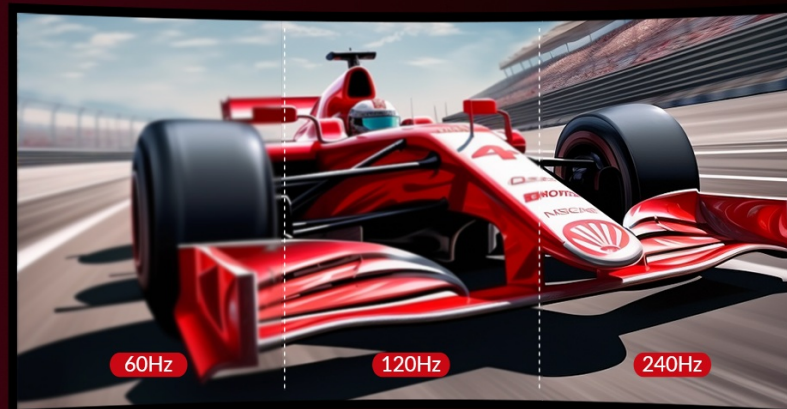


Figure 8: Ultra-High Refresh Rate for an enhanced gaming experience.

Video 3: Demonstrating how the iDock C10 can boost productivity in a dual-computer setup.

7. SPECIFICATIONS

Feature	Detail
Product Dimensions	5.51 x 3.74 x 1.97 inches
Item Weight	3.84 Pounds
Model Number	iDock-C10-US
Operation Mode	Manual
Connector Type	USB Type C, HDMI, DisplayPort, USB-B, USB-A, LAN, Toslink, 3.5mm
Video Resolution	Up to 4K@60Hz 4:4:4, 1080P@240Hz/165Hz/144Hz/120Hz, 2560×1440@144Hz/120Hz
USB-C Power Delivery	Up to 60W for laptop charging
USB Data Transfer	USB 3.0 (up to 5Gbps), USB 3.2 Gen 2 (up to 20Gbps via USB-C)
Ethernet Speed	Gigabit (up to 1000Mbps)

8. TROUBLESHOOTING

- **No Display/Incorrect Resolution:** Ensure all video cables (HDMI, DisplayPort) are securely connected. Verify that your laptop's USB-C port supports video output. Check monitor input settings.
- **macOS Mirrored Output Only:** As noted, macOS only supports mirrored output across two monitors via the iDock C10. Extended display mode is not supported for macOS.
- **Peripherals Not Working:** Ensure USB cables are properly connected. Try connecting peripherals to different USB ports on the iDock C10.
- **Slow Switching:** While the iDock C10 features fast switching, ensure all connections are direct and without additional adapters or converters, which can introduce delays.
- **Laptop Not Charging:** Verify the USB-C cable is connected to the correct USB-C IN port and that your laptop supports USB-C Power Delivery.

Check Your Laptop Before Purchasing Our Product

In case of any compatibility problem, please confirm if the USB-C port on your laptop supports video output and data transfer.

Thunderbolt 3
Full Function



Only Data
Transfer &
Video Output



Full-Featured
USB-C Port



Only Data
Transfer



Only Charging



Only Data
Transfer &
Charging

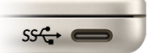


Figure 9: Check your laptop's USB-C port compatibility.

9. MAINTENANCE

To ensure the longevity and optimal performance of your iDock C10:





- Keep the device in a clean, dry environment, away from direct sunlight and extreme temperatures.
- Avoid blocking ventilation openings to prevent overheating.
- Clean the exterior with a soft, dry cloth. Do not use liquid cleaners or aerosols.
- Handle cables and connectors with care to prevent damage.





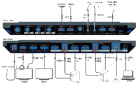


10. WARRANTY AND SUPPORT

The AV Access iDock C10 comes with a 1-year free replacement warranty and a 1-month free replacement period. Lifetime after-sale support is also provided. For any questions or assistance, please contact AV Access customer support.

© 2024 AV Access. All rights reserved.

Related Documents - iDock-C10-US

<div>4K 2x1 Dual-Monitor KVM Dock Switcher for MacBook</div> <div></div> <div>User Manual</div> <div></div>	<p>AV Access iDock M10: 4K 2x1 Dual-Monitor KVM Dock Switcher for MacBook - User Manual</p> <p>Detailed user manual for the AV Access iDock M10, a 4K 2x1 dual-monitor KVM dock switcher designed for MacBook and desktop PCs. Features include dual 4K video output, USB 3.2 Gen 2, 10Gbps data transfer, 100W power delivery, Gigabit Ethernet, and comprehensive port expansion.</p>
<div>2 x 1 Dual-Monitor KVM Dock Switcher</div> <div></div> <div>User Manual</div> <div></div>	<p>AV Access KD-E10: 2x1 Dual-Monitor KVM Dock Switcher User Manual</p> <p>Comprehensive user manual for the AV Access KD-E10, a 2x1 Dual-Monitor KVM Dock Switcher designed for home office and entertainment. Learn about its features, applications, and specifications for seamless dual-monitor KVM switching.</p>

<p>8K 2x1 Dual-Monitor KVM Dock Switcher</p>  <p>User Manual</p> 	<p>AV Access iDock B10 8K 2x1 Dual-Monitor KVM Dock Switcher User Manual</p> <p>User manual for the AV Access iDock B10, a 2x1 8K KVM Dock Switcher. Details features, specifications, connections, and warranty for seamless dual-monitor setups.</p>
<p>2 x 1 Dual-Monitor KVM Dock Switcher</p>  <p>User Manual</p> 	<p>AV Access KD-E20 2x1 Dual-Monitor KVM Dock Switcher User Manual</p> <p>User manual for the AV Access KD-E20, a 2x1 dual-monitor KVM dock switcher. This device allows users to connect two USB-C laptops and switch between them to control two HDMI monitors and shared peripherals. It supports 4K@60Hz resolution, 100W USB-C PD charging, USB 3.0 data transfer, Gigabit Ethernet, and includes a variety of ports for peripherals like keyboards, mice, cameras, and SD cards. Detailed specifications, application diagrams, and warranty information are provided.</p>
	<p>AV Access KVM Switch Dock: Connectivity Diagram and Setup Guide</p> <p>Detailed diagram and explanation of the AV Access KVM Switch Dock (Model 4KSW31C-DM), illustrating connections for 3 computers, 2 monitors, laptops, and peripherals.</p>
<p>KVM Switch Docking with Dual Monitor</p>  <p>User Manual</p> 	<p>AV Access 4KSW21-DK KVM Switch Docking Station User Manual</p> <p>User manual for the AV Access 4KSW21-DK KVM Switch Docking Station, detailing package contents, features, panel layout, application diagram, specifications, and troubleshooting for dual monitor KVM setups.</p>