

## SNIXWOO CX-70

# SNIXWOO Lockable Roof Racks Cross Bars Instruction Manual

For Mazda CX-70 & CX70 PHEV 2025

## 1. PRODUCT OVERVIEW

The SNIXWOO Lockable Roof Racks Cross Bars are designed to enhance the cargo capacity of your Mazda CX-70 or CX70 PHEV 2025. These cross bars provide a secure and versatile platform for transporting various outdoor gear and accessories.

### Key Features:

- **Precise Compatibility:** Specifically designed to fit Mazda CX70 & CX-70 PHEV 2025 models, integrating with factory side rails for a secure fit.
- **Robust Durability:** Constructed from heavy-duty steel with a corrosion-resistant black powder coating for long-lasting performance in diverse weather conditions.
- **Versatile Design:** Accommodates a wide range of accessories, including ski racks, bike mounts, and watersport carriers.
- **Quiet Performance:** Aluminum construction minimizes wind resistance and noise for a more enjoyable driving experience.
- **Hassle-Free Installation:** Easy installation without drilling, featuring a clamp locking system and included hardware.

## 2. WHAT'S IN THE BOX

Verify that all components are present before beginning installation:

- Cargo Bar Kit
- Installation Manual
- Mounting Hardware (includes hex socket wrench, Allen wrench, spare screws, and keys)



Image 1: Complete set of SNIXWOO Lockable Roof Racks Cross Bars and included tools.

### 3. SETUP AND INSTALLATION

Follow these steps for proper installation of your SNIXWOO roof racks. Ensure your vehicle is parked on a level surface and the engine is off.

#### Important Considerations:

- Do not cut the bars or scrape the plastic headers. These crossbars are vehicle specific, and bar lengths vary by model.
- If one bar is longer than the other, the front of your vehicle is wider than the back. In this case, install the longer bar on the front and the shorter bar on the rear.
- If you cannot fit it, re-check the instructions as a point might have been missed.
- If you cut the bars or do not insert cross bars fully into the mount, the bars' carrying capacity will decrease.

#### Installation Steps:

##### 1. Prepare the Cross Bars:

Identify the longer bar for the front and the shorter bar for the rear. The pointed end of each bar should

face the rear of your vehicle, and the round end should face the front.

**2. Attach End Supports:**

Screw the end supports to the crossbars. Do not fully tighten the screws at this stage to allow for adjustment.

**3. Remove Lock Cover:**

Push to open the cap or use a tool to pry it open. Insert the key horizontally and turn 90 degrees anti-clockwise to unlock the base, then remove the outer cover.

**4. Position on Vehicle:**

Carefully place the assembled cross bars onto your vehicle's factory side rails. For the front bar, ensure its position does not interfere with the sunroof's operation.

**5. Adjust and Tighten:**

Loosen the screws on the clamps so that the lower clamp can move. Move the lower clamp into position under the side rail. Tighten the screws using the provided Allen key. Ensure both driver and passenger side screws are tightened simultaneously to ensure even pressure.

**6. Secure Locks:**

Once satisfied with the position and tightness, put the lock mechanism back and lock it with the key. Replace the plastic lock cover.

## How to Remove The Lock Cover

### Step 1



Push to open

or



Or use a tool to pry it

### Step 2



### Step 3



- Insert the key horizontally and turn 90 anti-clockwise to
- unlock the base, and then remove the outer cover.



Image 2: Detailed steps for removing the lock cover to access mounting screws.

# Hassle-Free Installation

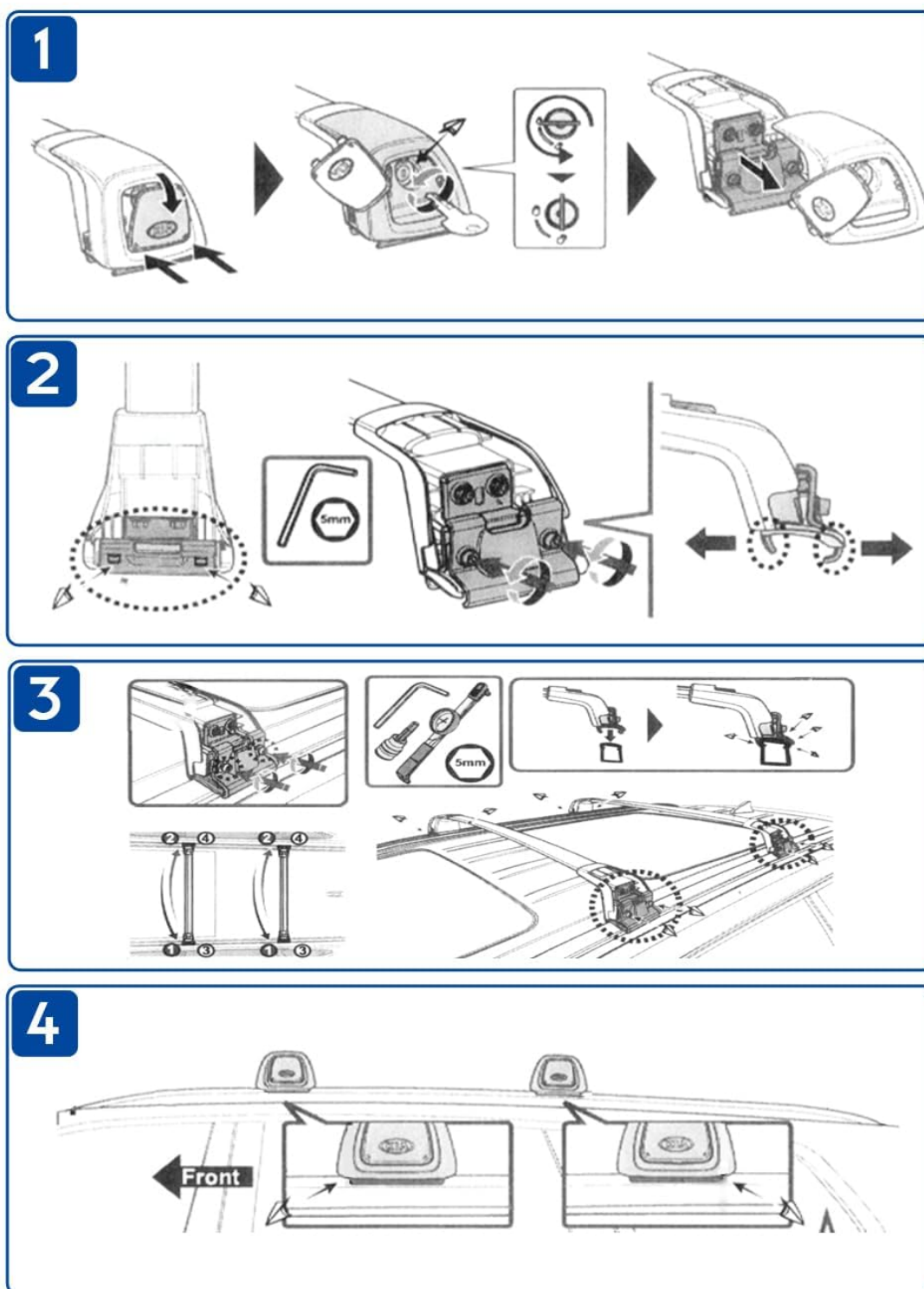


Image 3: Visual guide for the hassle-free installation process of the cross bars.

## Installation Videos:

Your browser does not support the video tag.

Video 1: General installation guide for SNIXWOO roof racks. While specific to a CX5 model, the principles apply to CX-70 installation.

Your browser does not support the video tag.

Video 2: Animated installation steps for cross bars, demonstrating the assembly and mounting process.

## 4. OPERATING INSTRUCTIONS

---

Once installed, your SNIXWOO roof racks are ready for use. The maximum load capacity for these cross bars is **165 pounds**. Always distribute weight evenly and secure cargo properly.

### Usage Tips:

- The crossbars feature an anti-theft design with integrated locks for added security.
- The length of the crossbar can be adjusted to fit your specific cargo needs.
- The aerodynamic design helps minimize wind noise and resistance during travel.



## Detailed Display



*Anti-theft, Safer*



*The length of the crossbar can be adjusted*



Image 4: Close-up of the anti-theft lock and adjustable length mechanism.



Image 5: Examples of outdoor gear that can be transported using the roof racks.

### Safety Guidelines:

- Prepare special carriers when loading surfboards, kayaks, snowboards, etc.
- Use fixing devices to secure the front and rear of long, large items.
- Maintain proper speed based on the load weight and road conditions.
- Check the tightness of all fasteners after a short distance of travel.

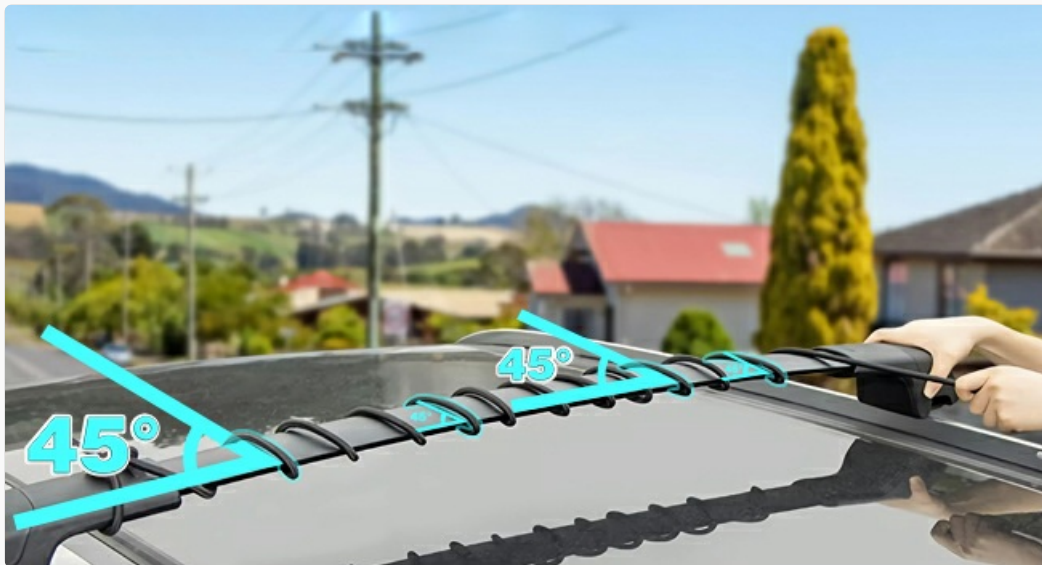


Image 6: Visual representation of safety tips for securing cargo.



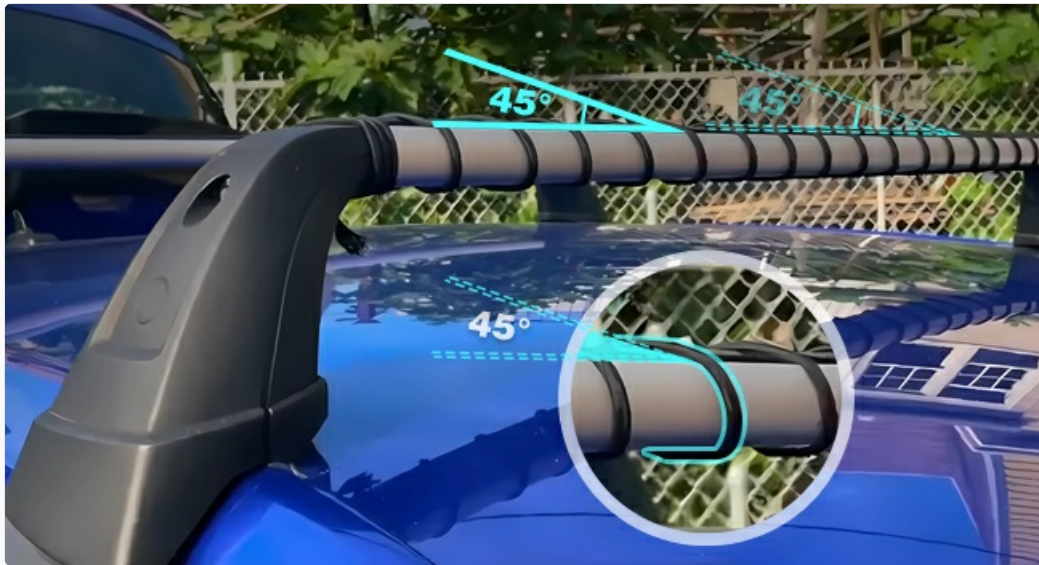


Image 7: Further safety guidelines for driving with roof-mounted cargo.

## 5. MAINTENANCE

To ensure the longevity and optimal performance of your roof racks, regular maintenance is recommended:

- Periodically check all bolts and fasteners for tightness, especially after long trips or carrying heavy loads.
- Clean the cross bars with mild soap and water. Avoid abrasive cleaners that could damage the finish.
- Inspect the plastic components and rubber strips for any signs of wear or damage. Replace if necessary.

## 6. TROUBLESHOOTING

If you encounter any issues with your SNIXWOO roof racks, consider the following:

- **Whistling Noise:** Some users report a whistling noise when driving. This can sometimes be mitigated by adjusting the position of the bars or adding a fairing (not included). Ensure all components are tightly secured.
- **Difficulty with Installation:** Double-check all steps in the installation guide. Ensure the correct bar (longer for front, shorter for rear) is used and that the clamps are properly aligned with the vehicle's side rails.
- **Damaged Parts:** If any parts are damaged during installation or use, please contact customer support for assistance.

## 7. SPECIFICATIONS

Feature	Detail
Brand	SNIXWOO
Model	CX-70
Item Weight	12.38 pounds
Package Dimensions	39.2 x 6.1 x 5.4 inches
Manufacturer Part Number	CX7038CSO

Color	Black
Load Capacity	165 Pounds
Mounting Type	Clamp on
Automotive Fit Type	Vehicle Specific Fit

## 8. WARRANTY AND SUPPORT

For any questions, concerns, or assistance with installation or product support, please contact the seller directly. You can typically do this by clicking or tapping the seller's name on the product page or by navigating to 'Your Orders' and selecting 'Get help' or 'Get product support'. The seller aims to respond with a solution within 24 hours.