

## Generic xixing-36810

# User Manual for Generic Metal Cabinet with 6 Drawers

Model: xixing-36810

## PRODUCT OVERVIEW

This document provides essential information for the safe and efficient use of your new Generic Metal Cabinet. Designed for versatility, this cabinet features a robust steel construction and smooth-gliding drawers, making it suitable for various office and home environments.



Image: Front view of the pink metal cabinet with six drawers, highlighting its sleek design and integrated wheels.

Key features include:

- **Durable Construction:** Made entirely of steel for long-lasting use.

- **Mobile Design:** Equipped with smooth-rolling wheels for easy relocation.
- **Safety Features:** Includes anti-drop and anti-sinking buckles for drawer stability.
- **Ample Storage:** Features large and small drawers to accommodate various items.

## SETUP AND ASSEMBLY

Your Generic Metal Cabinet is designed for convenience and comes largely pre-assembled. Minimal setup is required to ensure optimal functionality and safety.

### Unpacking

1. Carefully remove the cabinet from its packaging.
2. Inspect the cabinet for any signs of damage during transit. If damage is found, contact customer support immediately.
3. Ensure all components are present. The cabinet includes the main unit and an instruction manual.

### Drawer Safety Features

The cabinet is equipped with anti-drop and anti-sinking buckles to prevent drawers from accidentally falling out or tilting when fully extended. These features are typically pre-installed.



Image: Detailed view of the anti-drop (01) and anti-sinking (02) buckles located within the drawer mechanism, ensuring drawer stability.

To ensure these features function correctly, gently pull out each drawer to its full extension and verify that it remains stable and does not detach.

## OPERATING INSTRUCTIONS

Using your metal cabinet is straightforward. Follow these guidelines for optimal performance and longevity.

### Drawer Usage

- **Opening Drawers:** Gently pull the handle of the desired drawer outwards. The anti-drop mechanism will engage to prevent accidental removal.
- **Closing Drawers:** Push the drawer firmly until it is fully closed and flush with the cabinet front.
- **Loading Drawers:** Distribute weight evenly within the drawers. Avoid overloading to ensure smooth operation and prevent damage to the drawer slides.

### Mobility

The cabinet is equipped with wheels for easy movement. To move the cabinet, ensure all drawers are closed and gently push or pull it to the desired location. Avoid moving the cabinet over uneven surfaces or thresholds with excessive force.

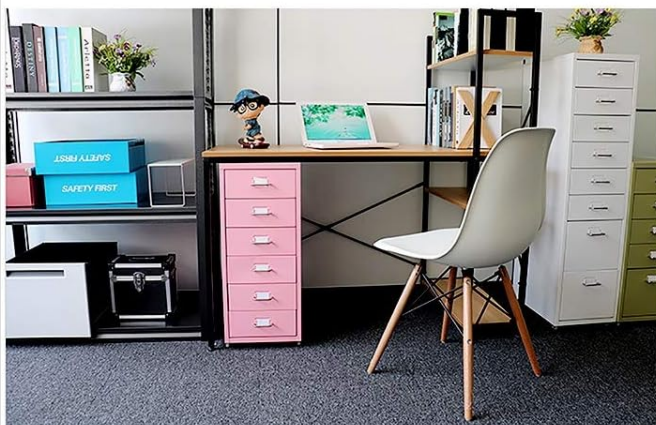


Image: Examples of the cabinet in different environments, showcasing its versatility and ease of placement under desks or as standalone storage.

## MAINTENANCE

Regular maintenance will help preserve the appearance and functionality of your metal cabinet.

### Cleaning

- Wipe the exterior surfaces with a soft, damp cloth.
- For stubborn marks, use a mild, non-abrasive cleaner.
- Avoid using harsh chemicals, abrasive pads, or solvents, as these can damage the finish.
- Dry thoroughly with a clean, soft cloth to prevent water spots.

### Drawer Slides and Wheels

- Periodically check drawer slides and wheels for any accumulated dust or debris.
- Clean with a dry cloth or a soft brush.
- If drawers or wheels become stiff, a small amount of silicone-based lubricant can be applied to the moving parts, avoiding contact with the cabinet's painted surfaces.

## TROUBLESHOOTING

This section addresses common issues you might encounter with your metal cabinet.

Problem	Possible Cause	Solution
Drawer sticks or is difficult to open/close.	Obstruction in the drawer slide. Overloaded drawer. Dust or debris on slides.	Check for items blocking the drawer. Reduce the weight in the drawer. Clean the drawer slides.
Cabinet wheels do not roll smoothly.	Debris caught in wheels. Wheels need lubrication.	Clear any debris from the wheels. Apply a small amount of silicone lubricant to the wheel axles.
Drawer feels wobbly when extended.	Anti-sinking buckle not engaged. Excessive weight.	Ensure the drawer is properly seated on its slides. Reduce the weight in the drawer.

## SPECIFICATIONS

Detailed specifications for your Generic Metal Cabinet (Model: xixing-36810).

Attribute	Detail
Product Type	Floor-standing filing cabinet, mobile cabinet
Material	Steel
Overall Dimensions (6-drawer model)	28 cm (W) × 40 cm (D) × 69 cm (H)

Attribute	Detail
Large Drawer Dimensions	23 cm (W) × 37 cm (D) × 19 cm (H)
Small Drawer Dimensions	23 cm (W) × 37 cm (D) × 9 cm (H)
Height without Wheels	66 cm (3 cm less than overall height)
Steel Thickness	0.7 mm
Number of Drawers	6 (for this specific model)
Color	Pink
Assembly Required	No (Comes pre-assembled)
Locking Mechanism	None
Model Number	xixing-36810
ASIN	B0DPF48XFF

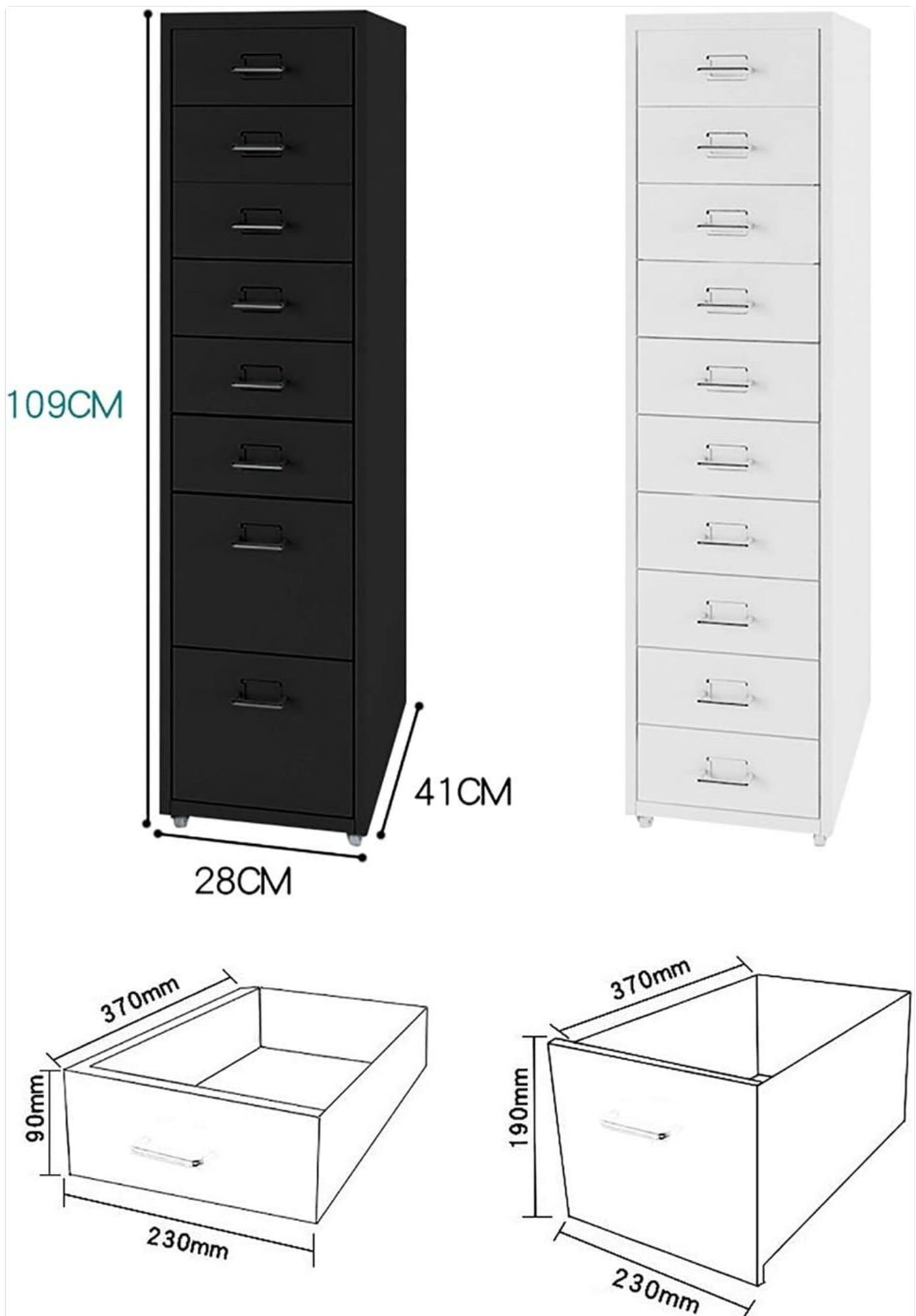


Image: Technical diagram illustrating the overall dimensions of the cabinet and the internal dimensions of both large and small drawers.

## WARRANTY AND SUPPORT

---

For any questions, concerns, or support needs regarding your Generic Metal Cabinet, please refer to the information below.

### Return Policy

This product is eligible for a refund or replacement within 14 days of purchase, in accordance with the seller's return policy.

### Customer Support

For direct assistance, please contact the seller, **12138LiRan**, through the platform where the purchase was made. Please have your order details and product ASIN (B0DPF48XFF) ready when contacting support.

You can typically find seller contact information on your order history page or the product listing page.