

Diivoo HCT-379

Diivoo 4 Zone Sprinkler Timer User Manual

Model: HCT-379

INTRODUCTION

Thank you for choosing the Diivoo 4 Zone Sprinkler Timer. This programmable automatic irrigation timer is designed to simplify your garden watering, offering independent control over four separate zones. With features like rain delay and manual watering modes, it provides flexibility and efficiency for your lawn, yard, and pool watering needs. Please read this manual thoroughly before operation to ensure proper setup and optimal performance.

SAFETY INFORMATION

- Do not immerse the timer in water. The unit is IP54 rated for water resistance, but not submersion.
- Use only 2 AA 1.5V alkaline batteries. Do not mix old and new batteries, or different types of batteries.
- Ensure all connections are tight to prevent leaks.
- Operate within recommended water pressure limits to avoid damage.
- Keep out of reach of children.
- Protect from freezing temperatures. Remove batteries and store indoors during winter.

PRODUCT OVERVIEW

Components



Figure 1: Front view of the Diivoo 4 Zone Sprinkler Timer, showing the large LCD display, control buttons, and four hose outlets.

- **Main Unit:** Houses the control panel, LCD display, and battery compartment.
- **Inlet Connector:** Connects to your outdoor faucet (standard 3/4" garden hose thread). Features reinforced nylon fiber for durability.
- **Four Outlet Connectors:** Each outlet can be connected to a separate hose or irrigation line.
- **Control Buttons:** For navigation and setting adjustments (OK, ESC/OFF, +, -, DELAY).
- **LCD Display:** Large screen showing current time, program settings for each zone (A, B, C, D), and status indicators.

Key Features

- **4 Independent Watering Zones:** Allows separate scheduling for different areas.
- **Programmable Schedules:** Set start time, watering duration (1s-360min), and frequency (every 1 min to 24 hrs, or every day to every 15 days).
- **Rain Delay Function:** Skip watering cycles to conserve water during rainy periods.
- **Manual Watering Mode:** Initiate immediate watering without affecting programmed schedules.
- **Large LCD Display:** 3.2 x 2 inch screen for easy readability and quick operation.
- **IP54 Water Resistance:** Durable and suitable for outdoor use.
- **Low Power Consumption:** Battery life up to 6-8 months with 2 AA batteries (not included).
- **Low Power Protection:** Valve automatically shuts off when battery is too low to prevent water waste.

SETUP

1. Battery Installation

The timer requires 2 AA 1.5V alkaline batteries (not included).

1. Locate the battery compartment on the back of the timer.
2. Slide the battery cover open.
3. Insert two new AA alkaline batteries, ensuring correct polarity (+/-).
4. Close the battery cover securely. The battery cover has a seal to isolate moisture.



Figure 2: Image showing the battery compartment and reinforced nylon fiber connection, highlighting the leakproof design.

2. Connecting the Timer

1. Ensure your outdoor faucet is turned off.
2. Screw the timer's inlet connector onto any standard 3/4" garden outdoor faucet. Hand-tighten only. Do not overtighten.
3. Connect your garden hoses to the four independent outlets (A, B, C, D) at the bottom of the timer.

4. Turn on your outdoor faucet. The timer is designed to withstand typical household water pressure.

OPERATING INSTRUCTIONS

Understanding the LCD Display and Controls



Figure 3: Close-up of the large LCD screen and the 7-button quick setup panel.

The large LCD display shows various information including the current time, battery level, active zone indicators (A, B, C, D), start time, watering duration, watering frequency, and next start time. The control panel features buttons for navigation and setting adjustments:

- **OK:** Confirm selection or enter setting mode.
- **ESC/OFF:** Exit current setting, return to previous screen, or turn off the timer.
- **+:** Increase value or move forward in menu.
- **-:** Decrease value or move backward in menu.

- **DELAY:** Activate/deactivate rain delay.
- **NOW/ABCD:** Switch between current time display and zone selection.

1. Setting Current Time

1. Press the **OK** button to enter setting mode. The time display will flash.
2. Use the **+** or **-** buttons to adjust the hour. Press **OK** to confirm.
3. Adjust the minutes using **+** or **-**, then press **OK** to confirm.
4. Press **ESC** to exit setting mode.

2. Programming Automatic Watering Schedules (4 Zones)

The Diivoo timer allows you to set independent watering schedules for each of its four zones (A, B, C, D).

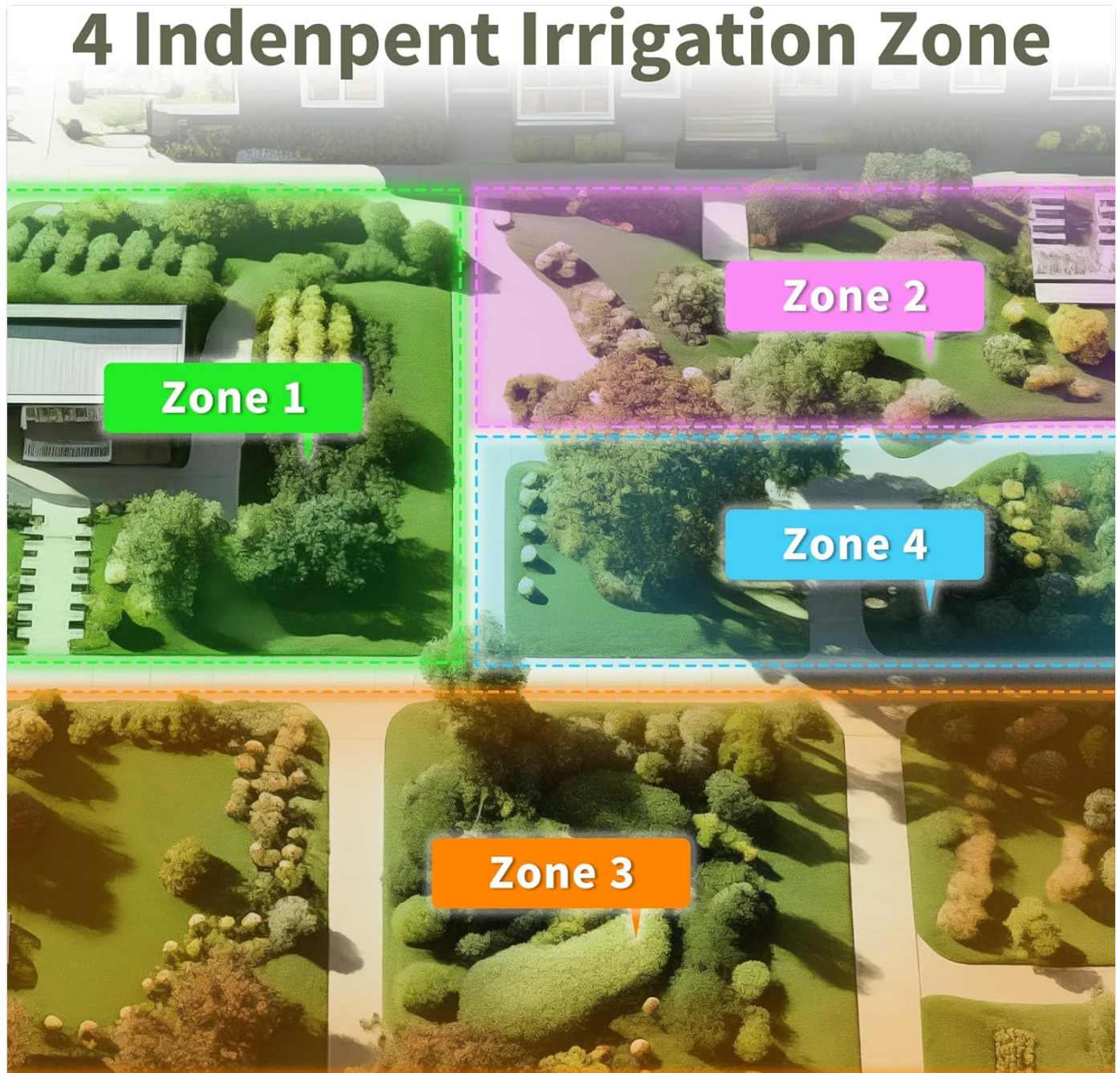


Figure 4: Visual representation of four independent irrigation zones (Zone 1, Zone 2, Zone 3, Zone 4) for customized watering.

Manual Watering

A/B/C/D ZONE can be individually set for manual watering.



Figure 5: Display showing options for setting Start Time, Watering Duration (1s to 360min), and Watering Frequency (Every 1H-23H or Every 1-15 Days).

1. Press the **NOW/ABCD** button to select the desired zone (A, B, C, or D). The selected zone indicator will flash.
2. Press **OK** to enter programming for the selected zone.
3. **Set Start Time:** Use + or - to adjust the hour and minutes for the watering start time. Press **OK** after each adjustment.
4. **Set Watering Duration ("How Long"):** Use + or - to set the watering duration from 1 second to 360 minutes. Press **OK** to confirm.
5. **Set Watering Frequency ("How Often"):**
 - Use + or - to select frequency in hours (e.g., every 1 hour to 23 hours). Press **OK**.
 - Alternatively, select frequency in days (e.g., every 1 day to 15 days). Press **OK**.
 - You can also set specific days of the week for watering. Navigate through the days and press **OK** to select/deselect.

6. After setting all parameters for the zone, press **ESC** to save and exit. Repeat for other zones as needed.

Note: Adequate water pressure is required when all 4 zone ports are operating simultaneously. If water pressure is insufficient, it is recommended to rotate the use of the 4 zone ports to avoid reduced water flow through each port.

3. Manual Watering Mode

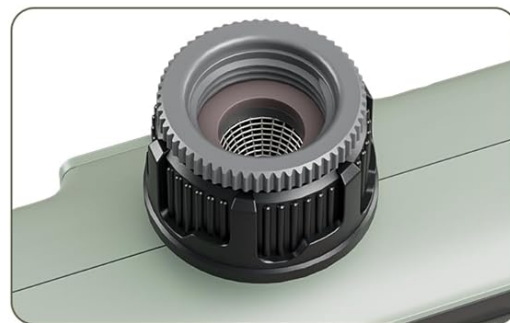
Manual watering allows you to water immediately without interrupting your preset programs.

Excellent Leakproof & Waterproof

• Durability

• Low Power Consumption

• Waterproof



Reinforced Nylon Fiber



2 × AA Batteries (Not Included)



Battery cover with seal ring
isolated moisture



Figure 6: Illustration of manual watering in progress, showing the ability to set individual watering times for each zone from 1 second to 360 minutes.

1. From the main screen, press the **OK** button (water drop icon).
2. Use **+** or **-** to select the desired watering duration (from 1 second to 360 minutes).
3. Press **OK** to start manual watering. The selected zone(s) will begin watering immediately.
4. To stop manual watering, press **ESC/OFF**.

4. Rain Delay Function

The rain delay feature allows you to temporarily pause your watering schedule to avoid overwatering and save water during rainy conditions. The timer does not have a rain sensor, so you will need to activate this manually based on local

weather forecasts.

Easy to Read and Setup



Figure 7: Display showing the Rain Delay feature, indicating that the next watering schedule will be skipped. This feature aids in water conservation and allows for postponed schedules.

1. In the "ON" state (main display), press and hold the **+** button for 5 seconds.
2. The "DELAY" icon will appear on the screen, and the "NEXT START" time will update to reflect the postponed schedule.
3. To deactivate rain delay, press and hold the **+** button again for 5 seconds.

5. Product Video Guide

Your browser does not support the video tag.

Video 1: An official product video demonstrating the features of the Diivoo 4 Zone Sprinkler Timer, including manual watering, automatic watering, and rain delay functionality.

MAINTENANCE

- **Cleaning:** Wipe the timer with a damp cloth. Do not use abrasive cleaners or solvents.

- **Battery Replacement:** Replace batteries when the low battery indicator appears on the LCD. It is recommended to replace batteries every 6-8 months or at the start of each watering season.
- **Winterization:** Before the first frost, remove the timer from the faucet. Remove the batteries. Store the timer indoors in a dry, protected area to prevent damage from freezing water.
- **Filter Cleaning:** Periodically check the filter washer inside the inlet connector for debris. Clean if necessary to ensure proper water flow.

TROUBLESHOOTING

Problem	Possible Cause	Solution
Timer does not turn on/LCD is blank.	Dead or incorrectly installed batteries.	Replace batteries with new AA alkaline batteries, ensuring correct polarity.
Water does not flow or flow is weak.	Low water pressure from faucet. Filter washer is clogged. Timer is in OFF mode. All 4 zones operating simultaneously with insufficient pressure.	Ensure faucet is fully open. Clean the filter washer. Press ESC/OFF to turn ON. Rotate watering schedules for different zones instead of running all at once.
Timer leaks from connections.	Loose connections or missing/damaged O-rings.	Ensure all connections are hand-tight. Check and replace O-rings if damaged.
Watering schedule not activating.	Rain Delay is active. Incorrect program settings. Low battery.	Deactivate Rain Delay. Review and correct program settings for each zone. Replace batteries.

SPECIFICATIONS

- **Model:** HCT-379
- **Product Dimensions:** 6.46 x 5.59 x 2.99 inches
- **Item Weight:** 1.85 pounds
- **Power Source:** 2 x AA 1.5V Alkaline Batteries (not included)
- **Watering Duration:** 1 second to 360 minutes
- **Watering Frequency:** Every 1 minute to 24 hours, or Every 1 day to 15 days
- **Water Resistance:** IP54
- **Inlet Thread:** Standard 3/4" Garden Hose Thread
- **Number of Settings:** 16

WARRANTY AND SUPPORT

Diivoo products are designed for reliability and performance. For warranty information, technical support, or any questions regarding your Diivoo 4 Zone Sprinkler Timer, please contact Diivoo customer service. Our team of experts is available to assist you.

Please refer to the contact information provided with your product packaging or visit the official Diivoo website for the

most up-to-date support details.

Diivoo Official Store: [Diivoo Store on Amazon](#)