

## WAVLINK WLAMUS-WN588HX3-GW-FBA

# WAVLINK AX3000 WiFi6 Outdoor WiFi Extender Instruction Manual

Model: WLAMUS-WN588HX3-GW-FBA

## 1. PRODUCT OVERVIEW

The WAVLINK AX3000 WiFi6 Outdoor WiFi Extender is a dual-band wireless access point designed for robust outdoor and indoor use. It supports Wi-Fi 6 technology, offering enhanced speeds and wider coverage. This device can function as a Mesh Extender, Wireless Access Point (AP), Repeater, or Router, providing flexible deployment options for various networking needs.

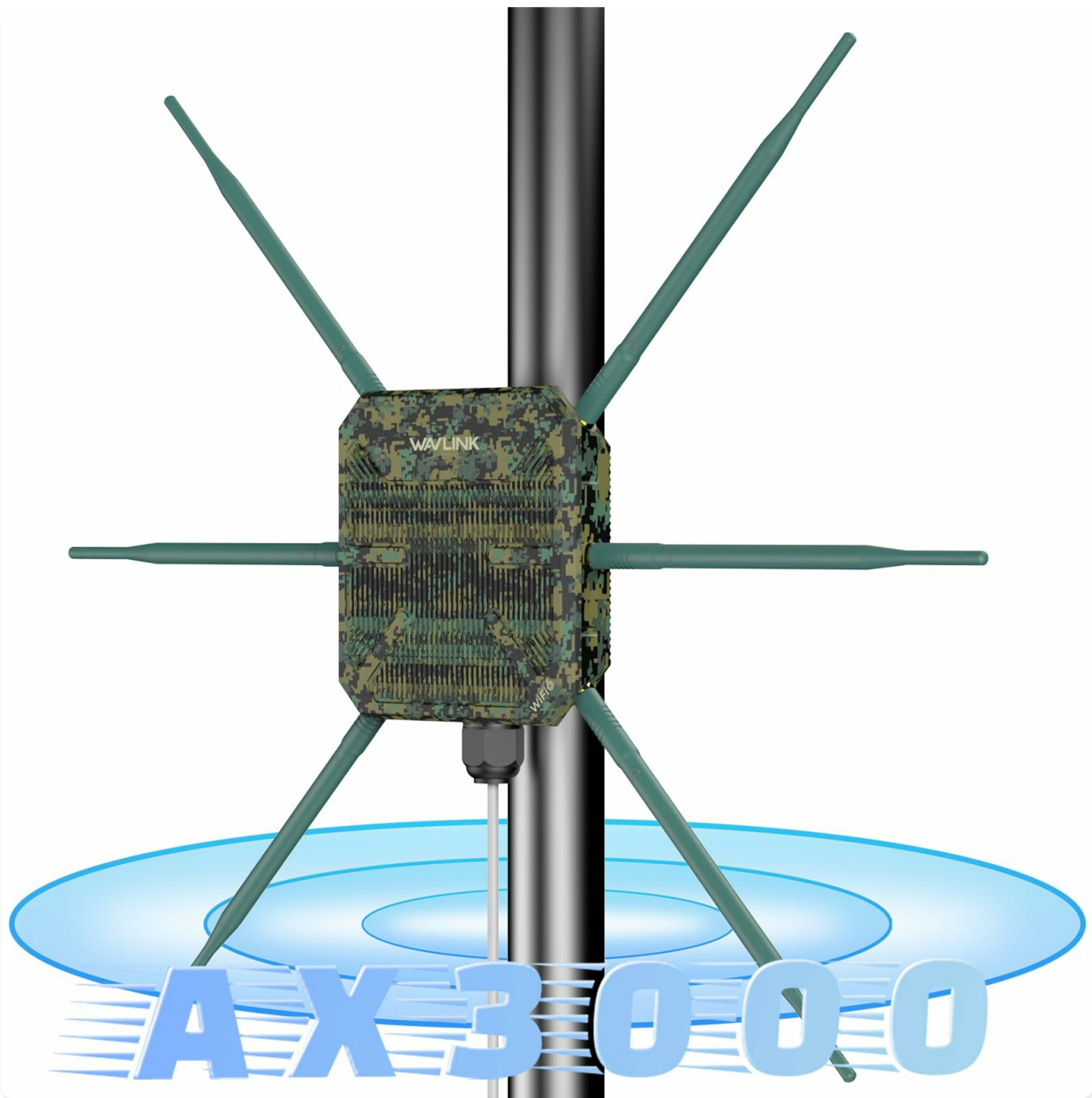


Figure 1: WAVLINK AX3000 WiFi6 Outdoor WiFi Extender with antennas, illustrating dual-band speeds of 2402Mbps on 5GHz and 573Mbps on 2.4GHz.

## 2. WHAT'S IN THE BOX

---

- 1 x Outdoor WiFi Repeater
- 6 x Antennas
- 1 x POE Adapter
- 1 x AC Power Adapter
- 1 x RJ45 Ethernet Cable
- Wall Mounting Kit
- Installation Guide



Figure 2: All components included in the WAVLINK AX3000 WiFi6 Outdoor WiFi Extender package.

### 3. SETUP AND INSTALLATION

The device supports flexible installation methods, including pole-mounting and wall-mounting, to suit various outdoor and indoor environments.

#### 3.1 Attaching Antennas

Carefully screw the 6 omnidirectional antennas onto the designated ports on the main unit. Ensure they are securely fastened to maintain weather resistance.

#### 3.2 Mounting Options

The device can be mounted on a pole or directly to a wall using the provided mounting kit. The mounting template assists in accurate placement of screws or ties.

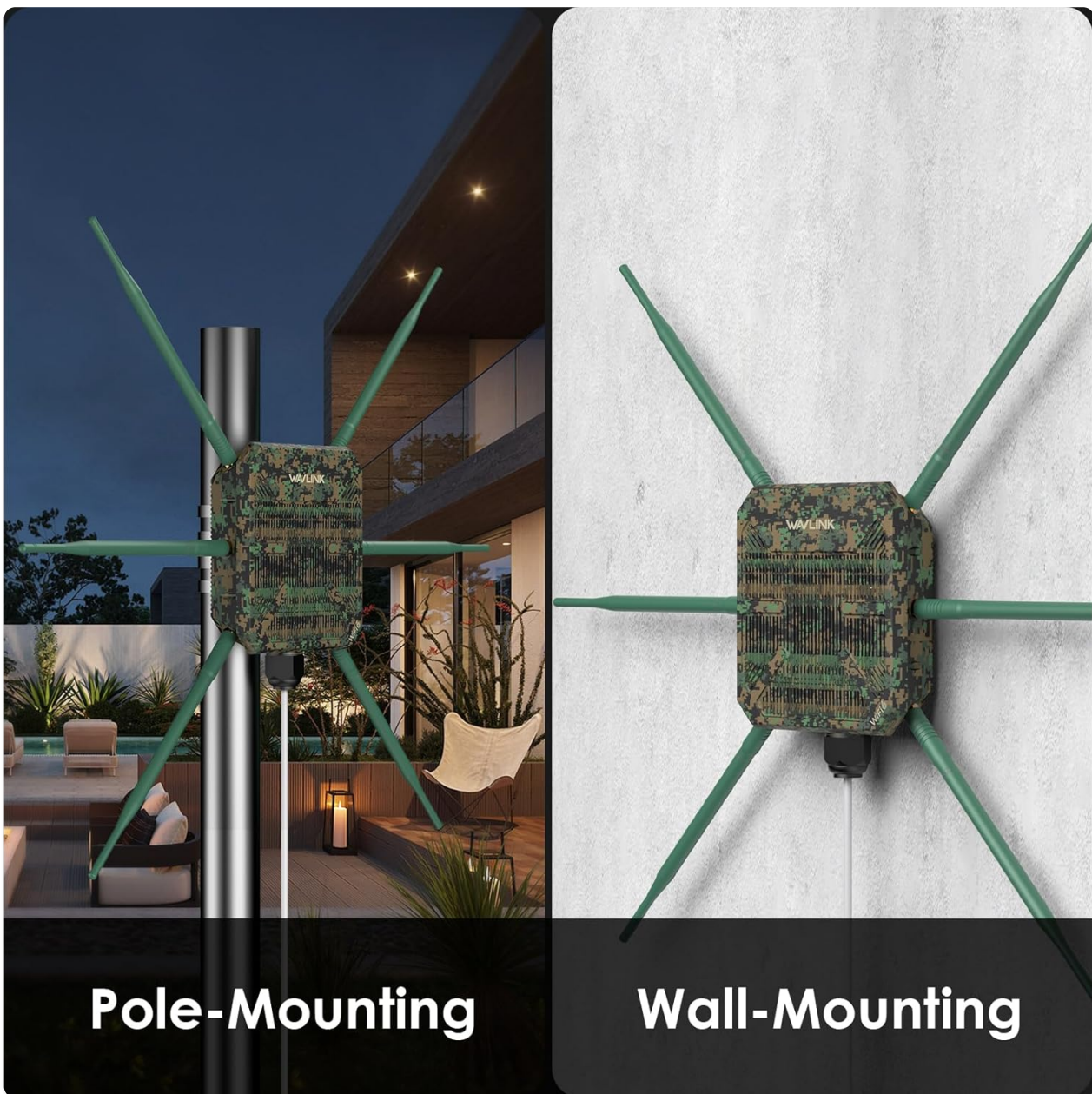


Figure 3: Illustration of pole-mounting and wall-mounting installation methods.

### 3.3 Power Over Ethernet (POE) Connection

The device is powered via an 802.3at Active POE adapter. Connect an Ethernet cable from your network switch or router to the POE adapter, and then connect another Ethernet cable from the POE adapter to the device's Gigabit WAN/LAN PoF Port. Ensure the waterproof connection is properly sealed for outdoor installations.



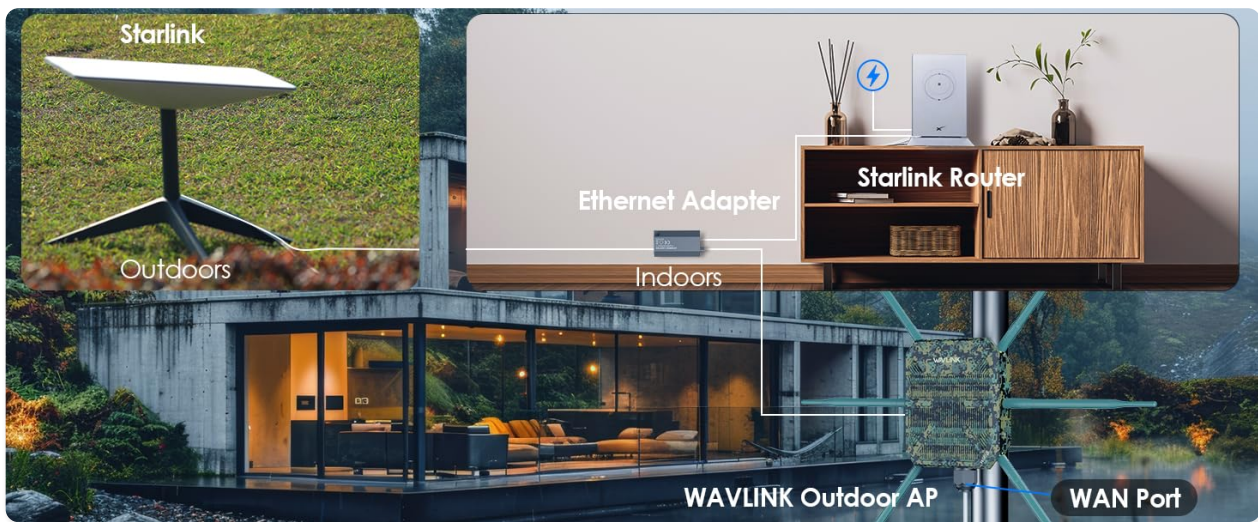


Figure 4: Example of connecting the extender to a Starlink router using a POE adapter.

Your browser does not support the video tag. Please update your browser.

Video 1: Unboxing and initial setup of the WAVLINK AX3000, demonstrating the physical components and their assembly.  
This video highlights the robust packaging and the omnidirectional antennas.

## 4. OPERATING MODES

The WAVLINK AX3000 supports multiple operating modes to adapt to various network requirements:

- **AP/Router Mode:** Functions as a primary access point or router, distributing Wi-Fi signals.
- **Repeater Mode:** Extends the range of an existing Wi-Fi network.
- **Mesh Extender Mode:** Creates a seamless mesh Wi-Fi network with other compatible devices.

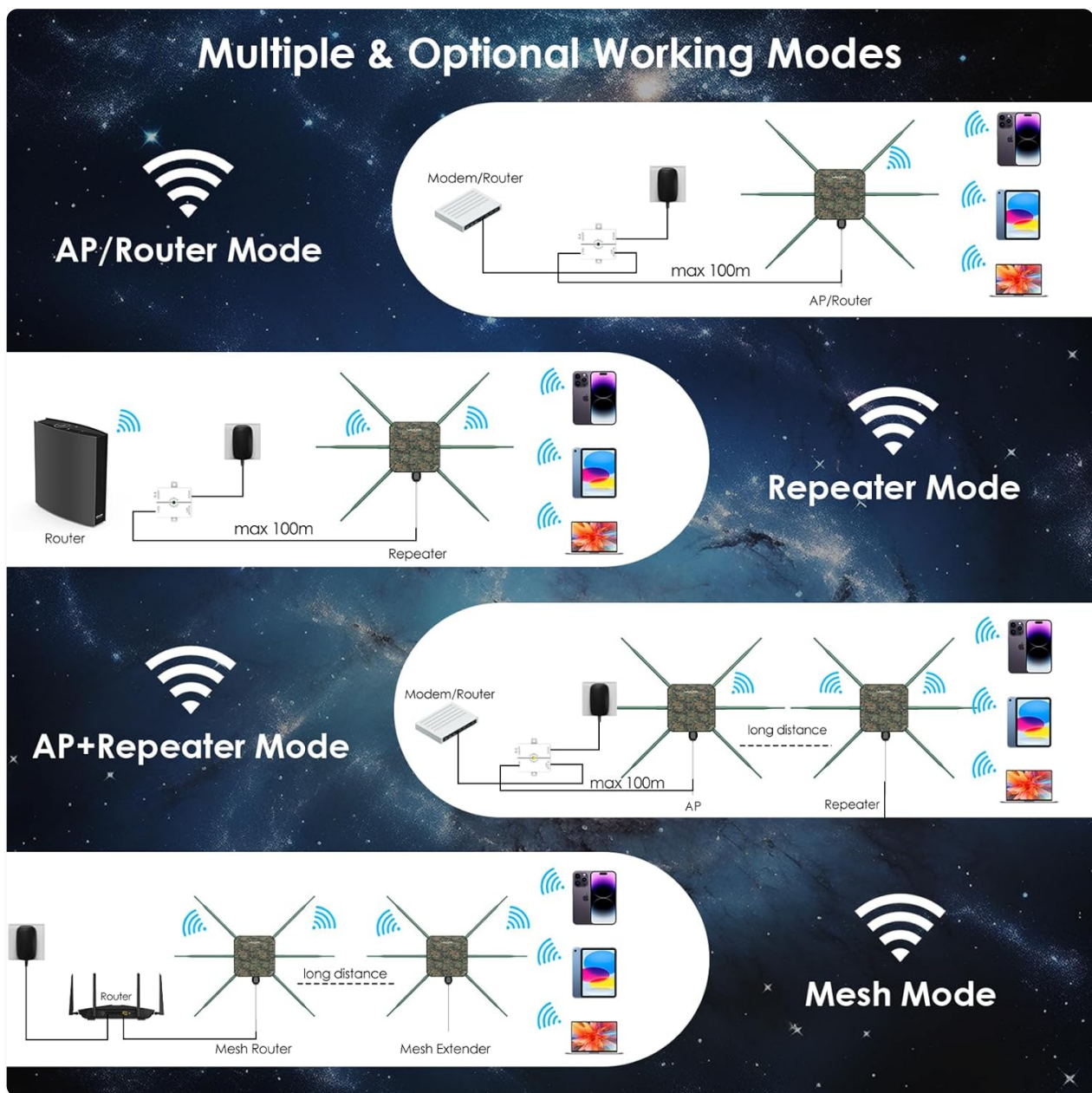


Figure 5: Visual representation of the different operating modes and their network configurations.

Your browser does not support the video tag. Please update your browser.

Video 2: Demonstrates the various modes of operation, including how to set up the device as a repeater to boost signal strength over long distances.

## 5. PERFORMANCE AND COVERAGE

Equipped with Wi-Fi 6 technology, the AX3000 delivers ultra-fast dual-band speeds:

- Up to 2402Mbps on the 5GHz band.
- Up to 573Mbps on the 2.4GHz band.

The 6x7dBi omnidirectional antennas and built-in high-power amplifiers provide extensive Wi-Fi coverage, strengthening signals and expanding reach in open-air environments. Stability technology automatically avoids channel conflicts for reliable connections.



## Access Stable Signal Wherever You Are



Figure 6: Examples of environments where the extender provides stable and wide-ranging Wi-Fi access.

Your browser does not support the video tag. Please update your browser.

Video 3: Demonstrates the range and speed capabilities of the extender in various outdoor settings, including speed tests at different distances.

## 6. WEATHER RESISTANCE

The WAVLINK AX3000 features a durable IP67 weatherproof enclosure, protecting it against harsh outdoor conditions such as extreme cold, heat, or continuous moisture. It is designed to withstand temperatures from -30°C to 70°C (-22°F to 158°F) and includes 15KV ESD and 4KV lightning protection for stable operation in challenging environments.



Figure 7: Overview of the device's robust design for outdoor durability.

## 7. SPECIFICATIONS

Feature	Detail
Brand	WAVLINK
Model Number	WLAMUS-WN588HX3-GW-FBA
Wireless Communication Standard	802.11a/b/g/n/ac, 802.11ax (WiFi 6)
Data Transfer Rate	3000 Megabits Per Second (Combined)
Frequency Band Class	Dual-Band (2.4GHz & 5GHz)
Antennas	6 x 7dBi Omnidirectional Antennas
Weatherproof Rating	IP67
Temperature Resistance	-30°C to 70°C (-22°F to 158°F)



Protection	15KV ESD, 4KV Lightning Protection
Power Supply	802.3at Active POE
Item Weight	2.64 pounds
Package Dimensions	13.66 x 10.28 x 2.91 inches

## 8. TROUBLESHOOTING

If you encounter issues with your WAVLINK AX3000, consider the following:

- **No Power:** Ensure the POE adapter is correctly connected and receiving power. Check all cable connections.
- **No Wi-Fi Signal:** Verify that the device is powered on and configured in the desired operating mode (AP, Repeater, Router, Mesh). Check antenna connections.
- **Poor Signal Strength/Speed:** Adjust the device's placement and antenna orientation. Ensure there are no major obstructions. In Repeater mode, ensure the extender is within good range of the main router.
- **Cannot Access Web Interface:** Ensure your device is connected to the extender's network (wired or wireless) and try accessing the default IP address or hostname. Refer to the quick start guide for default login details.
- **Factory Reset:** If configuration issues persist, locate the reset button (often recessed) and press and hold it for approximately 10 seconds until the device reboots to factory defaults.

## 9. WARRANTY AND SUPPORT

For any issues or support needs, please contact WAVLINK customer service:

- **Phone Support:** +18889730883 (UTC-5) Mon - Fri 9AM - 6PM
- **Email Support:** [Contact@wavlink.com](mailto:Contact@wavlink.com)

WAVLINK is committed to providing high-quality products and support. Please retain your proof of purchase for warranty claims.