

Sundpey BYDWRH002

Sundpey 21V Cordless Impact Wrench (Model BYDWRH002) User Manual

Your guide to safe and efficient operation

1. IMPORTANT SAFETY INFORMATION

Read all safety warnings, instructions, illustrations, and specifications provided with this power tool. Failure to follow all instructions listed below may result in electric shock, fire, and/or serious injury. Save all warnings and instructions for future reference.

General Power Tool Safety Warnings:

- **Work Area Safety:** Keep work area clean and well-lit. Cluttered or dark areas invite accidents. Do not operate power tools in explosive atmospheres, such as in the presence of flammable liquids, gases, or dust. Power tools create sparks which may ignite the dust or fumes.
- **Electrical Safety:** Power tool plugs must match the outlet. Never modify the plug in any way. Do not use any adapter plugs with earthed (grounded) power tools. Unmodified plugs and matching outlets will reduce risk of electric shock.
- **Personal Safety:** Stay alert, watch what you are doing, and use common sense when operating a power tool. Do not use a power tool while you are tired or under the influence of drugs, alcohol, or medication. A moment of inattention while operating power tools may result in serious personal injury.
- **Tool Use and Care:** Do not force the power tool. Use the correct power tool for your application. The correct power tool will do the job better and safer at the rate for which it was designed.
- **Battery Tool Use and Care:** Recharge only with the charger specified by the manufacturer. A charger that is suitable for one type of battery pack may create a risk of fire when used with another battery pack. Use power tools only with specifically designated battery packs. Use of any other battery packs may create a risk of injury and fire.

Battery and Motor Protection System:

This impact wrench features a robust protection system. The 65A motor protection system and 60A battery overload protection automatically stop operation if limits are exceeded to prevent overheating or damage. If

the tool stops, it indicates the protection system has activated. Allow the battery to rest briefly, then reinstall it to resume safe and efficient operation.

2. PACKAGE CONTENTS

Carefully unpack your Sundpey Cordless Impact Wrench kit and verify that all items listed below are present and in good condition. If any items are missing or damaged, please contact customer support.



Image: The complete Sundpey Cordless Impact Wrench kit, including the wrench, batteries, charger, sockets, and drill bits, neatly arranged.

- 1 x 1/2-inch Cordless Impact Wrench
- 2 x 4.0Ah Batteries
- 1 x Charger
- 5 x Socket Sets (17mm, 19mm, 21mm, 22mm, 24mm)
- 1 x Extension Pole (125mm)
- 3 x Twist Drill Bits (5mm, 6mm, 8mm)
- 3 x Wood Drill Bits (5mm, 6mm, 8mm)

- 3 x Masonry Drill Bits (5mm, 6mm, 8mm)
- 1 x 1/2-inch Hexagonal Adapter
- 2 x O-rings
- 2 x Pins (3x20mm, 3x25mm)
- 1 x Storage Box
- 1 x User Manual (this document)

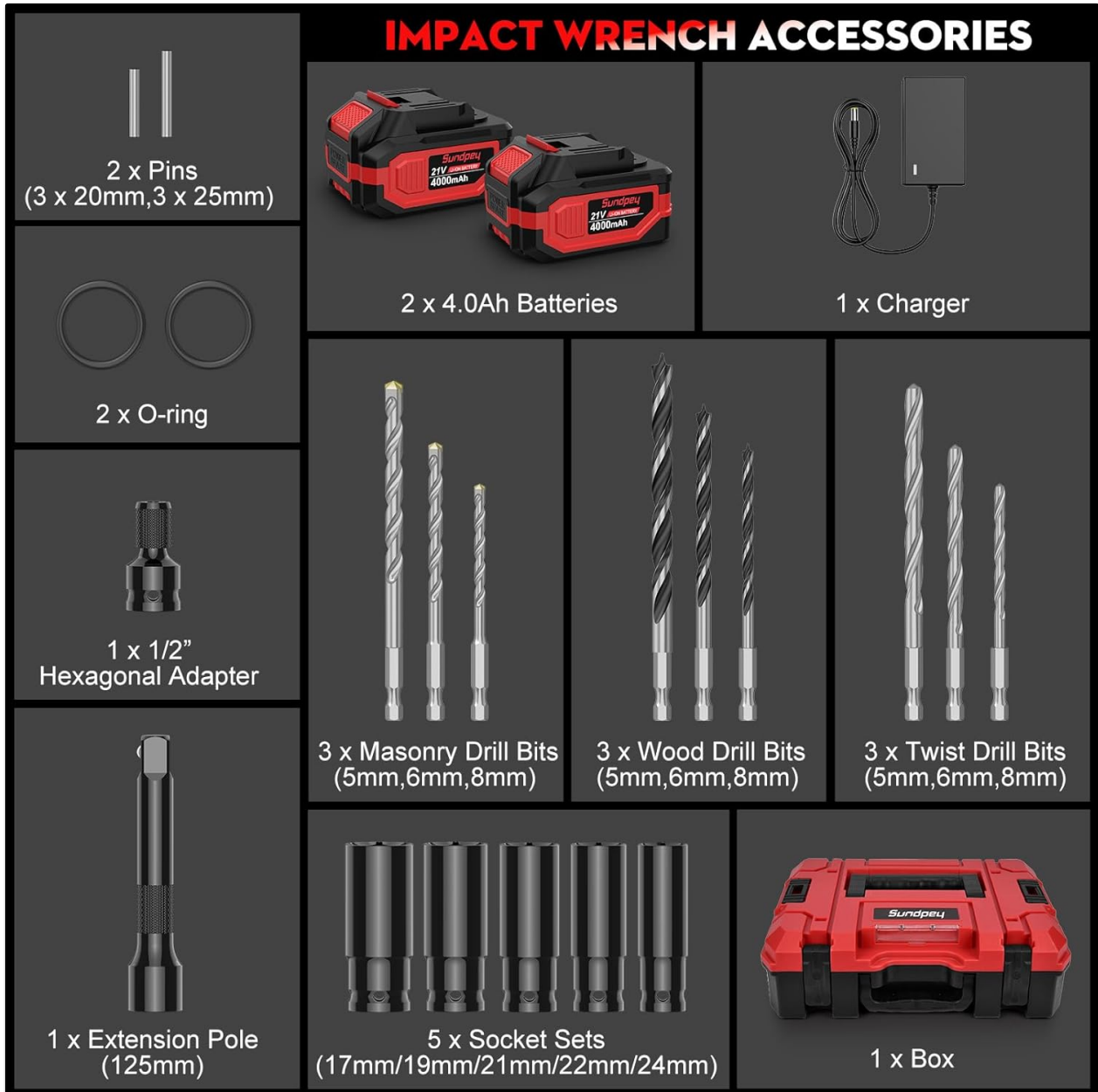


Image: A detailed view of all included accessories, such as batteries, charger, sockets, drill bits, and adapters.

3. PRODUCT OVERVIEW

Familiarize yourself with the components of your Sundpey Cordless Impact Wrench for optimal use.

IMPACT WRENCH DETAILS



Image: An exploded view highlighting key components of the impact wrench, including the 1/2-inch square drive, brushless motor, LED light, electric quantity display, forward/reverse switch, trigger, battery remove button, 4000mAh battery, and belt buckle.

Key Components:

- **1/2-inch Square Drive:** For attaching sockets and adapters.
- **Brushless Motor:** Provides high torque and efficiency with reduced noise and vibration.
- **LED Light:** Illuminates the work area for improved visibility in dark environments.
- **Electric Quantity Display:** Indicates remaining battery charge.
- **Forward & Reverse Switch:** Controls the rotation direction for tightening and loosening.
- **Trigger:** Activates the tool and controls speed.
- **Battery Remove Button:** Releases the battery pack from the tool.
- **4000mAh Battery:** Provides power for cordless operation.
- **Belt Buckle:** Allows for convenient hanging of the tool on a belt or wall.

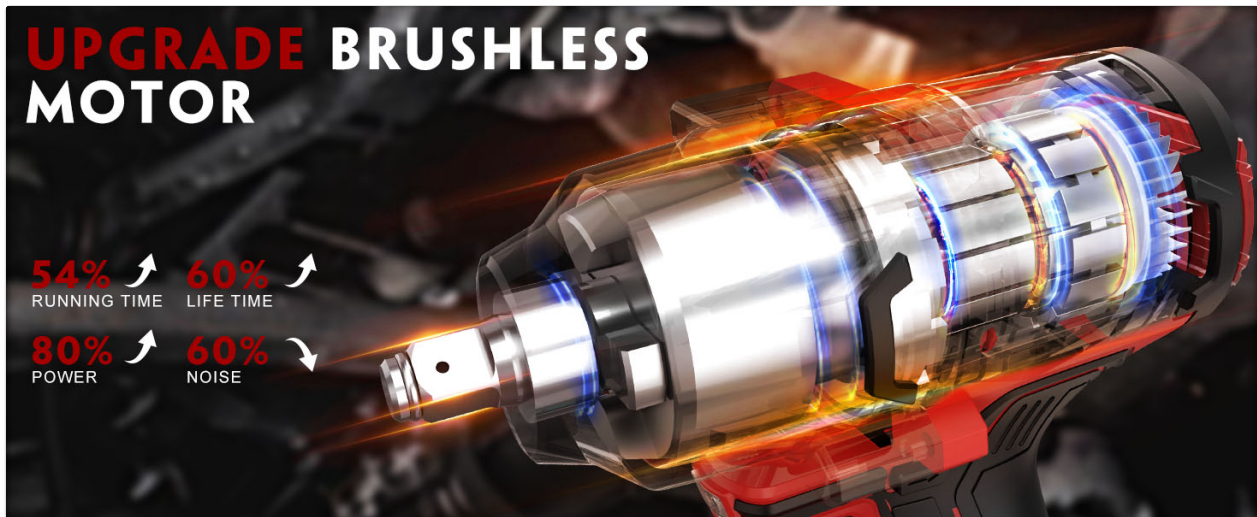


Image: An internal diagram illustrating the brushless motor technology, emphasizing its benefits in running time, lifetime, power, and reduced noise.

4. SETUP

4.1 Battery Charging and Installation

1. Upon first receiving the impact wrench, ensure the battery is charged to activate it.
2. Connect the charger to a power outlet and insert the battery pack into the charger.
3. Allow the battery to charge fully. The charger indicator will show when charging is complete.
4. To install the battery, align the battery pack with the base of the impact wrench and slide it in until it clicks securely into place.
5. To remove the battery, press the battery release button and slide the battery pack out.

2× 4000MAH HIGH PERFORMANCE BATTERIES

Equipped with two batteries, it can work continuously for a long time



Image: A visual representation of the 4000mAh battery, highlighting its 21V power and various protection features like overload, overheat, and overdischarge protection.

4.2 Attaching Sockets and Drill Bits

The 1/2-inch square drive allows for quick and secure attachment of various accessories.



Image: A step-by-step guide demonstrating how to install and remove impact sockets and drill bits from the impact wrench.

1. **For Sockets:** Align the square opening of the socket with the 1/2-inch square drive on the tool. Push the socket firmly onto the drive until it locks into place. To remove, pull the socket off while holding the tool.
2. **For Drill Bits (using Hexagonal Adapter):** Insert the 1/2-inch hexagonal adapter onto the square drive. Then, insert the hexagonal end of the drill bit into the adapter and secure it. To remove, reverse the steps.

5. OPERATING INSTRUCTIONS

5.1 Powering On/Off and Speed Control

The impact wrench features a variable speed trigger and a 3-speed control mode.



Image: A close-up of the impact wrench's control panel, showing the three-speed settings (L: 0-1400 RPM for fine adjustment, M: 0-1900 RPM for daily maintenance, H: 0-2600 RPM for power and speed operations).

- **To Power On:** Squeeze the trigger. The tool's speed will increase as you apply more pressure to the trigger.
- **To Power Off:** Release the trigger.
- **Speed Selection:** Use the speed selector button (often labeled 'MODE' or with speed indicators) to cycle through the three available speed settings:

- **Low (L):** 0-1400 RPM, suitable for fine adjustments or delicate tasks.
- **Medium (M):** 0-1900 RPM, ideal for general daily maintenance.
- **High (H):** 0-2600 RPM, for maximum power and speed operations.



Image: A visual demonstration of the impact wrench operating at different speeds (Fast: 0-2600 RPM, Medium: 0-1900 RPM, Slow: 0-1400 RPM) for various tasks.

5.2 Forward and Reverse Mode

The forward/reverse switch is located near the trigger for easy access.

FORWARD MODE & REVERSE MODE

Tightening nuts & removing nuts



Image: A diagram showing the forward and reverse switch positions, indicating how to push for forward mode (tightening) and reverse mode (removing nuts).

- **Forward Mode:** Push the switch to the left (when viewed from the rear of the tool) for tightening nuts and screws.
- **Reverse Mode:** Push the switch to the right for loosening or removing nuts and screws.
- **Lock Position:** When the switch is in the center position, the trigger is locked, preventing accidental activation. Always engage the lock when not in use or when changing accessories.



Image: A visual guide demonstrating the three positions of the direction control switch: reverse mode, lock the trigger, and forward mode.

5.3 Built-in LED Light

The integrated LED light automatically activates when the trigger is pressed, illuminating your work area.



Image: The impact wrench in operation, with its built-in LED light illuminating a dark workspace, demonstrating improved

visibility.

5.4 Applications

This 2-in-1 high torque impact wrench is versatile for various tasks:

- **With Sockets:** Ideal for tightening or loosening wheel nuts on cars, motorcycles, commercial vehicles, and automobiles. Also suitable for bolts on doors, walls, scaffolding installations, and general garage use.
- **With Hexagonal Adapter and Drill Bits:** Can be used as a powerful drill for various materials, including wood, masonry, and metal (with appropriate drill bits).
- **With Hexagonal Adapter and Screwdriver Bits:** Functions as a screwdriver for furniture assembly and other DIY tasks.



Image: A mechanic using the Sundpey impact wrench to work on a car wheel, demonstrating its application for automotive tasks.



Image: The impact wrench fitted with a twist drill bit, being used to drill into a metal surface, showcasing its drilling capability.



Image: The impact wrench equipped with a woodworking drill bit, being used to drill into a wooden beam, illustrating its use in woodworking.



Image: A collage showing the impact wrench being used in various scenarios, including automotive repair, construction, and general fastening tasks.

6. MAINTENANCE

Regular maintenance ensures the longevity and optimal performance of your impact wrench.

- **Cleaning:** Keep the tool's ventilation openings clean and free from dust and debris. Use a soft, damp cloth to wipe down the exterior. Do not use harsh chemicals or abrasive cleaners.
- **Battery Care:** Store batteries in a cool, dry place away from direct sunlight. Do not store batteries in a discharged state for extended periods. Charge batteries fully before storage and periodically during long storage periods.
- **Accessory Inspection:** Regularly inspect sockets, drill bits, and adapters for wear or damage. Replace worn accessories to prevent injury and ensure efficient operation.
- **Storage:** When not in use, store the impact wrench and all accessories in the provided storage box in a dry, secure location, out of reach of children.

7. TROUBLESHOOTING

If you encounter issues with your Sundpey Cordless Impact Wrench, refer to the following common solutions:

Problem	Possible Cause	Solution
Tool does not start or stops unexpectedly.	Battery is discharged or not properly installed. Protection system activated (overload, overheat).	Ensure battery is fully charged and securely installed. If protection system activated, allow battery to rest briefly, then reinstall.
Reduced power or torque.	Low battery charge. Incorrect speed setting. Worn or damaged accessory.	Charge battery fully. Select a higher speed setting. Replace worn sockets or drill bits.
LED light not working.	Tool not activated. Faulty LED.	Ensure trigger is pressed. If issue persists, contact customer support.
Battery not charging.	Charger not plugged in. Faulty battery or charger.	Check power connection. Try another outlet. Contact customer support if problem persists.

If you experience any problems not covered in this section, please contact Sundpey customer support for assistance.

8. SPECIFICATIONS

Technical details for the Sundpey 21V Cordless Impact Wrench (Model BYDWRH002).

Specification	Value
Brand	Sundpey
Model Number	BYDWRH002
Power Source	Battery Powered
Voltage	21 Volts
Battery Capacity	4000 mAh
Battery Cell Type	Lithium Ion
Amperage	4 Amps
Maximum Torque	1400 N-m (1033 Ft-lbs)
Maximum Rotational Speed	2600 RPM
Number of Speeds	3
Maximum Chuck Size	12.7 Millimeters (1/2 inch)
Drill Type	Impact Driver
Item Weight	5.78 Kilograms (12.71 pounds)
Package Dimensions	14.17 x 11.73 x 4.69 inches

Specification	Value
Manufacturer	Yongkang Baiyide Tools Co., Ltd

9. WARRANTY AND SUPPORT

For warranty information, technical support, or to inquire about replacement parts, please refer to the contact details provided with your purchase documentation or visit the official Sundpey website. Keep your purchase receipt as proof of purchase for warranty claims.