

[Manuals.plus](#) /

> [podofo](#) /

> podofo 8 CORE 6G+128G Car Radio Stereo User Manual for Honda Pilot (2006-2008)

podofo 8 CORE 6G+128G

podof 8 CORE 6G+128G Car Radio Stereo User Manual

For Honda Pilot (2006-2008)

1. INTRODUCTION

This manual provides detailed instructions for the installation, operation, and maintenance of your new podofo 8 CORE 6G+128G Car Radio Stereo. Designed specifically for Honda Pilot models from 2006 to 2008, this unit features an Android 13 operating system, a 9-inch IPS touch screen, Wireless CarPlay, Android Auto, GPS navigation, WiFi, Bluetooth, and support for a backup camera. Please read this manual thoroughly before installation and use to ensure proper function and safety.



Image 1.1: Visual comparison of the car dashboard before and after installing the podofo car radio stereo in a Honda Pilot (2006-2008).

2. PRODUCT FEATURES

- **Operating System:** Android 13.0 with 8-Core CPU, 6GB RAM, and 128GB ROM for smooth performance.
- **Display:** 9-inch HD IPS Touch Screen with 1280*720 resolution, supporting split-screen functionality and multiple UI themes.
- **Smartphone Integration:** Wireless and Wired CarPlay / Android Auto for seamless access to phone apps, navigation, music, and voice control.
- **Navigation:** Built-in offline map app with worldwide data download, and online map support via WiFi/hotspot.

- **Audio:** 32-band DSP (Digital Sound Processor) for enhanced sound quality, noise suppression, and precise audio adjustments.
- **Connectivity:** Bluetooth 5.0 for hands-free calls and music streaming, Dual USB ports, WiFi.
- **Radio:** FM RDS radio tuner.
- **Camera Support:** Compatible with rear view cameras (HD Backup Camera included).
- **Control:** Steering Wheel Control (SWC) support.
- **Voice Control:** Integrated voice assistant for hands-free operation.

3. WHAT'S IN THE BOX

Verify that all components are present before beginning installation:

- Android Car Stereo Unit
- GPS Antenna
- External Microphone
- HD Backup Camera
- Power Cable
- RCA Cable
- USB Cable
- Installation Tool
- User Manual (this document)



Image 3.1: Overview of the car stereo unit dimensions and included accessories in the package.

4. INSTALLATION GUIDE

4.1 General Installation Steps

1. **Preparation:** Disconnect the vehicle's battery to prevent electrical shorts.
2. **Remove Old Unit:** Carefully remove the existing car radio stereo from your Honda Pilot dashboard. Refer to your vehicle's service manual for specific instructions on dashboard disassembly.
3. **Connect Wiring Harness:** Connect the provided power cable and RCA cables to the new stereo unit. Ensure all connections are secure.

4. **GPS Antenna:** Mount the GPS antenna in a location with a clear view of the sky, typically on the dashboard or under the windshield.
5. **External Microphone:** Connect the external microphone and route it to a suitable position for clear voice pickup, such as near the sun visor.
6. **Test Connections:** Before fully reassembling the dashboard, reconnect the battery and perform a basic test of the unit's functions (power on, radio, touch screen responsiveness).
7. **Secure Unit:** Once tested, secure the new car stereo unit into the dashboard opening.
8. **Reassemble Dashboard:** Carefully reassemble all dashboard components.

4.2 Backup Camera Wiring

The included HD Backup Camera requires specific wiring for proper operation. Follow these steps:

- Connect the camera's video output cable to the "Reversing Camera Input" on the car stereo unit.
- Locate the reverse trigger cable (often labeled "back" or "reverse") from the stereo's wiring harness.
- Connect the red wire (E) from the camera's power cable to the vehicle's backup light positive (+) terminal.
- Connect the black wire (D) from the camera's power cable to the vehicle's ground (GND).
- Connect the reverse trigger cable (A) from the stereo harness to the corresponding reverse signal wire in your vehicle. If this cable is already tied with the power harness, no separate connection is needed.



Image 4.1: Detailed wiring diagram for connecting the HD backup camera to the car stereo system.

5. OPERATING INSTRUCTIONS

5.1 Power On/Off

Press and hold the power button on the unit or use the vehicle's ignition to turn the stereo on or off.

5.2 Touch Screen Operation

The 9-inch IPS HD touch screen supports standard touch gestures. Tap to select, swipe to scroll, and pinch to zoom where applicable.

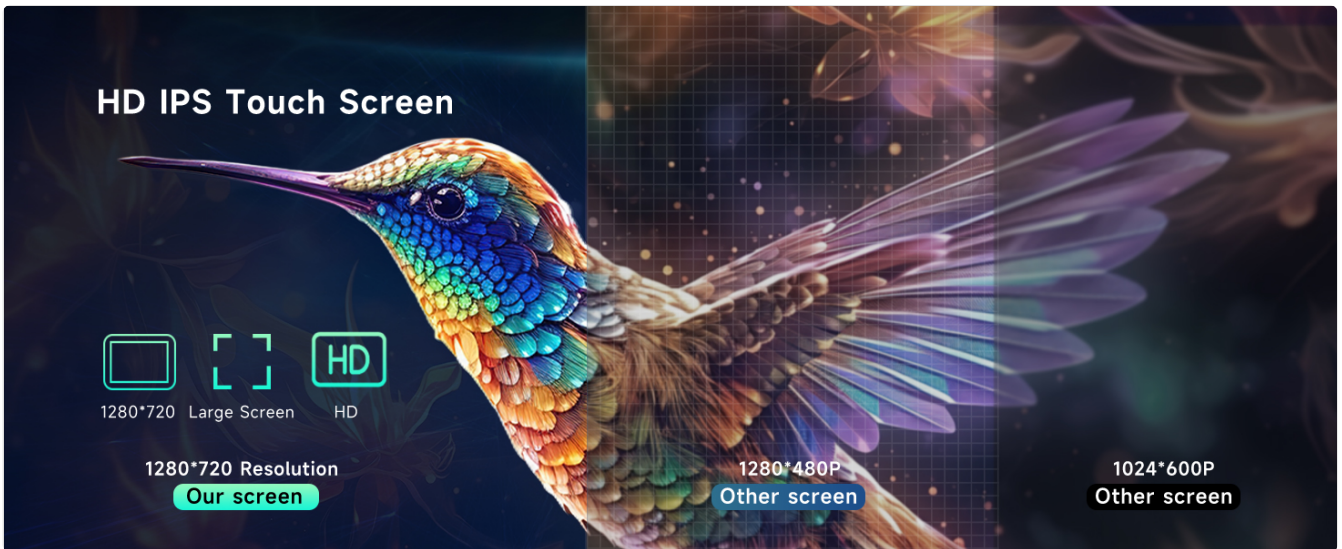


Image 5.1: Features of the IPS HD Touch Screen, highlighting 1280*720 resolution, 2.5D screen, and split-screen capability.

5.3 Wireless CarPlay / Android Auto

Connect your compatible smartphone wirelessly or via USB to access CarPlay or Android Auto. This allows you to use navigation, make calls, send messages, and listen to music directly from your phone's interface on the stereo screen.



Image 5.2: Explanation of CarPlay and Android Auto connectivity options, both wireless (Bluetooth) and wired (USB cable).

5.4 GPS Navigation & WiFi

The unit comes with a pre-installed offline map application. You can also connect to WiFi via a mobile hotspot or local network to use online navigation services and download additional apps from the application store.



Image 5.3: Demonstrates GPS navigation capabilities with both offline and online map options, alongside WiFi connectivity for app downloads.

5.5 Bluetooth 5.0 & FM/RDS Radio

Pair your phone via Bluetooth for hands-free calling and audio streaming. The FM/RDS radio allows you to tune into your favorite stations with clear reception.



Image 5.4: User interface for Bluetooth 5.0 hands-free calling and music, and the FM/RDS radio tuner.

5.6 DSP Audio & Equalizer

Utilize the built-in 32-band DSP to customize your audio experience. Adjust frequencies, balance, and fade to achieve optimal sound quality within your vehicle.



Image 5.5: The 32-band DSP adjustment interface for fine-tuning audio output and sound staging.

5.7 Steering Wheel Control (SWC)

Configure the unit to work with your vehicle's existing steering wheel controls for safe and convenient operation of audio and call functions.



Image 5.6: Interface for setting up and customizing steering wheel controls.

5.8 Voice Control

Activate the voice assistant by saying "Hey Podofu" or using the dedicated voice control button (if available) to perform various tasks hands-free, such as playing music, navigating, or making calls.

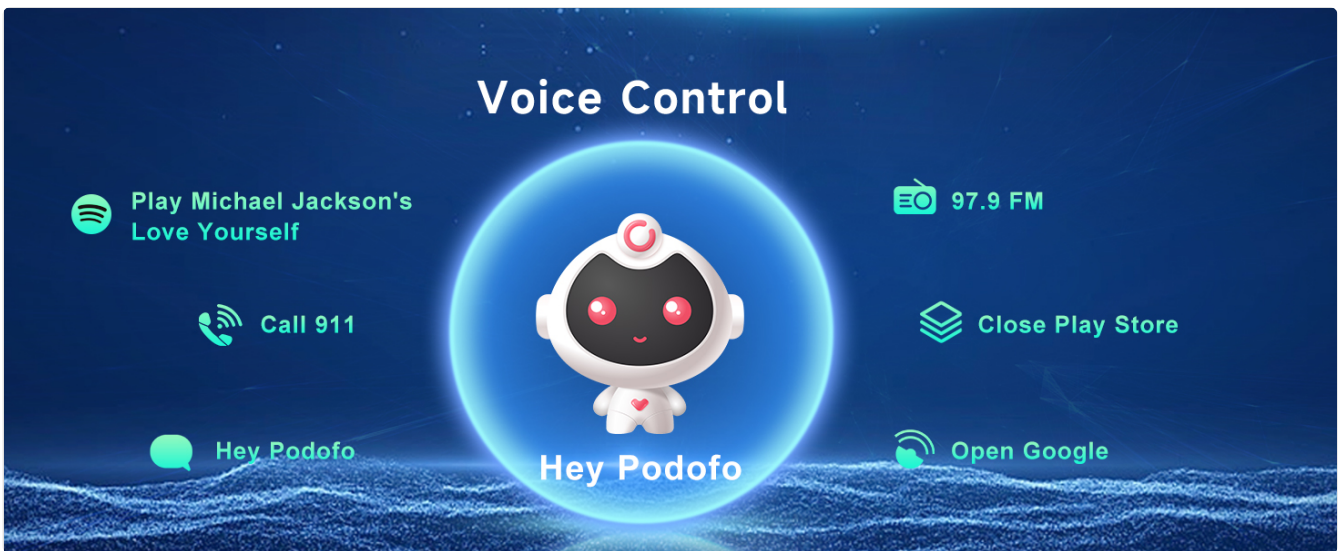


Image 5.7: Examples of voice commands and the voice control interface.

5.9 Split Screen & UI Themes

The unit supports split-screen mode, allowing you to run two applications simultaneously (e.g., navigation and music player). You can also customize the user interface with multiple themes to match your preference.

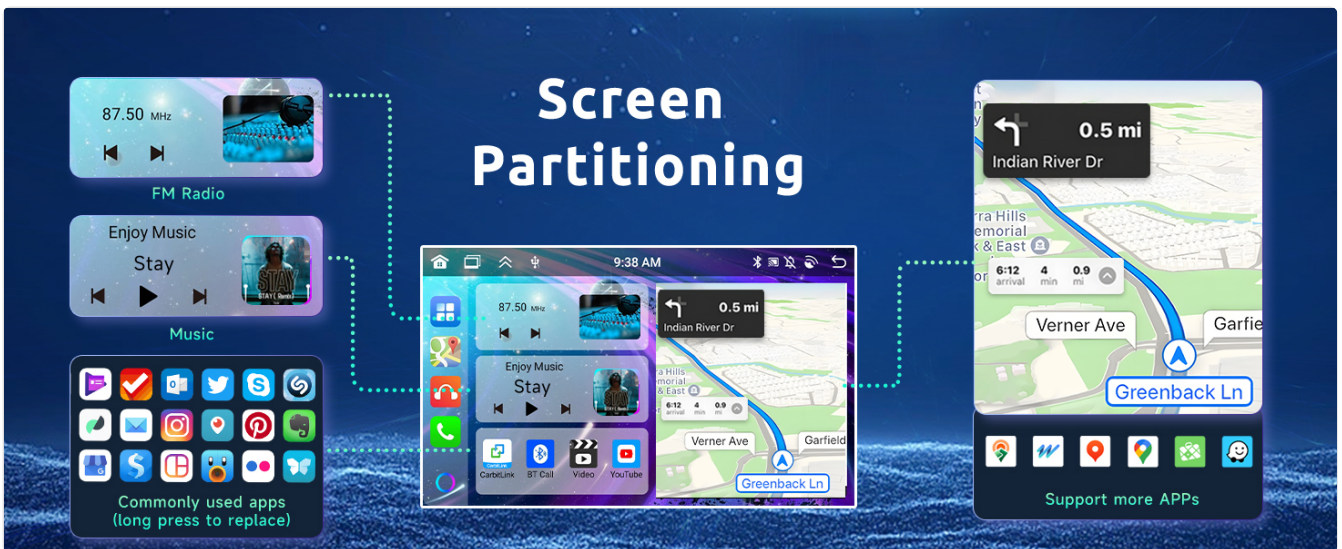


Image 5.8: Demonstration of screen partitioning for multitasking and various customizable UI themes.

5.10 Mirror Link

Mirror Link allows you to display your smartphone's screen directly onto the car stereo. This feature supports both Android and iOS devices, connecting via Bluetooth or USB cable.

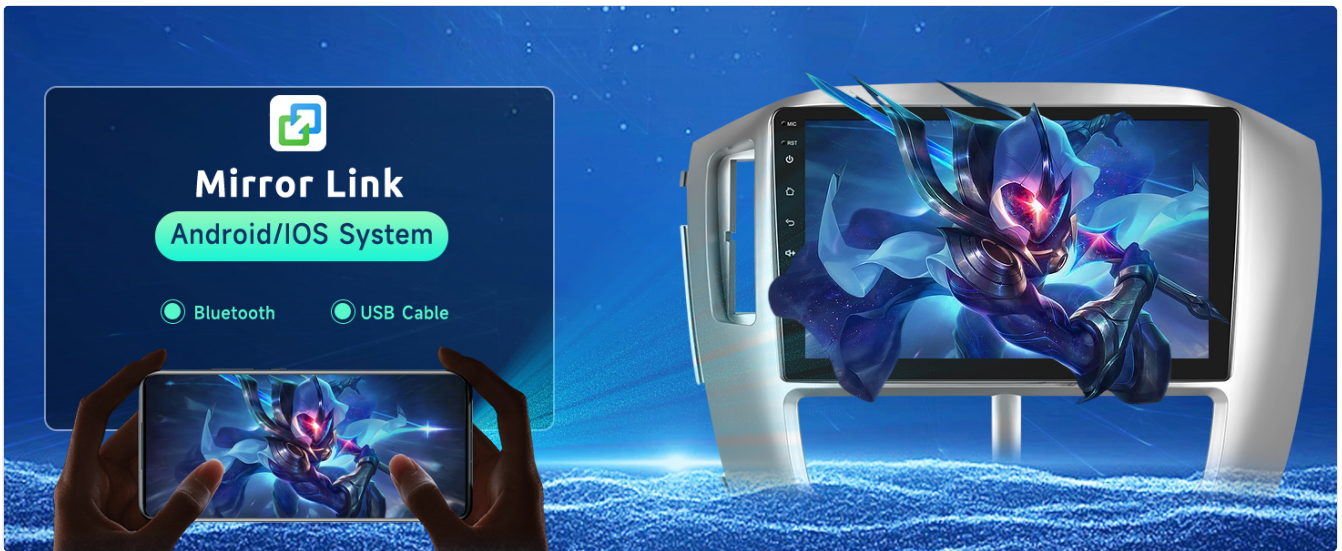


Image 5.9: Illustration of the Mirror Link function, showing a smartphone screen mirrored on the car stereo display.

6. SPECIFICATIONS

Brand	podofu
Model	8 CORE 6G+128G
Compatible Vehicle Models	Honda Pilot 2006, 2007, 2008
Operating System	Android 13
CPU	8 Core
RAM	6GB
ROM (Memory Storage)	128GB
Screen Size	9 Inches
Display Type	IPS Touch Screen
Resolution	1280*720P
Connectivity	Bluetooth 5.0, USB, Wi-Fi
Special Features	Wireless CarPlay, Android Auto, GPS Navigation, 32-Band DSP, Steering Wheel Control, Backup Camera Support
Item Weight	1 Kilogram

7. TROUBLESHOOTING

If you encounter issues with your podofu car stereo, please refer to the following common troubleshooting steps:

- **No Power:** Check all power connections and ensure the vehicle's battery is properly connected and charged. Verify the fuse for the stereo is not blown.
- **No Sound:** Check speaker connections. Ensure the volume is not muted or set too low. Verify audio settings in the

DSP equalizer.

- **Touch Screen Unresponsive:** Try restarting the unit. If the issue persists, a factory reset might be necessary (note: this will erase personal settings).
- **GPS Signal Lost:** Ensure the GPS antenna is correctly installed and has a clear view of the sky. Check GPS settings in the system menu.
- **Bluetooth Connection Issues:** Ensure Bluetooth is enabled on both the stereo and your device. Delete previous pairings and try reconnecting.
- **Backup Camera Not Displaying:** Verify the camera's power and video connections. Ensure the reverse trigger wire is correctly connected to the vehicle's reverse light signal.
- **CarPlay/Android Auto Not Connecting:** Ensure your phone is compatible and the app is updated. Try both wired and wireless connections. Check USB cable integrity if using a wired connection.

For persistent issues, please contact customer support.

8. WARRANTY AND SUPPORT

Your podofu car radio stereo comes with a **2-Year Warranty**. For technical assistance or warranty claims, please contact podofu customer support.

You can typically find support information by navigating to the seller's page on the platform where you purchased the product and looking for a "Contact Seller" or "Ask a question" option.

The image consists of three vertical panels. The first panel, titled "24/7 Technical Support", outlines a two-step process: Step 1 involves clicking "Buy Now" and shows details like shipping from Amazon, sold by Podofu US, 30-day returns, and secure payment. Step 2 involves clicking "Ask a question". The second panel highlights "100 Countries Available in over 100 countries", a "2-Year Warranty", and "24/7 Expert Customer Support". The third panel features the Podofu logo and the text "Specializing in Car Electronics".

Image 8.1: Information on how to access technical support, brand specialization, and warranty details.