

Manuals.plus /

› VELPAX /

› VELPAX Propane Tankless Water Heater, 4.74GPM 18L Indoor, Constant Temperature, Multi-Protection User Manual

VELPAX HWRSQ-18L-001

VELPAX Propane Tankless Water Heater

Model: HWRSQ-18L-001

1. INTRODUCTION

This manual provides essential information for the safe and efficient operation, installation, and maintenance of your VELPAX Propane Tankless Water Heater. Please read this manual thoroughly before installation or use and retain it for future reference. This tankless water heater is designed to provide on-demand hot water for residential applications, offering energy efficiency and space-saving benefits.



Figure 1.1: VELPAX 18L Thermostatic Tankless Water Heater. This image shows the main unit with its digital display and the VELPAX logo, highlighting its modern design and compact size.

2. SAFETY INFORMATION

WARNING: Improper installation, adjustment, alteration, service, or maintenance can cause property damage, injury, or death. Read the installation, operating, and maintenance instructions thoroughly before installing or servicing this equipment.

- **Gas Safety:** This unit is designed exclusively for use with Propane (LPG). Ensure all gas connections are secure

and leak-free. Never use natural gas with this unit.

- **Ventilation:** Proper ventilation is critical. Install a smoke exhaust pipe as required to ensure combustion exhaust gases are safely vented outdoors. This unit produces zero indoor emissions when properly vented.
- **Water Pressure:** The unit operates with a minimum of 3.6 PSI water pressure. Ensure your water supply meets this requirement.
- **Anti-freeze Protection:** In cold weather, if the unit will not be used for an extended period, drain residual water by opening the pressure relief valve to prevent freezing and damage.
- **Electrical Safety:** The unit requires 120V for ignition. Ensure proper grounding and follow all local electrical codes.
- **Overheating Protection:** The unit is equipped with multiple safety protections, including overheating protection. Do not tamper with safety devices.



Figure 2.1: Wind-Resistant and Flame-Resistant Features. This diagram illustrates the unit's ability to safely vent combustion gases and its effective frost protection, ensuring robust operation in various weather conditions.

3. PRODUCT OVERVIEW

The VELPAX 4.74 GPM 18L Indoor Propane Tankless Water Heater is designed for efficient, on-demand hot water supply. Its compact design saves space, and advanced features ensure reliable performance.

3.1 Key Features

- **Tankless Design:** Provides instant hot water without the need for a storage tank, saving over 50% of space compared to traditional models.
- **High Capacity:** Delivers up to 4.74 gallons per minute (18L), suitable for 2-3 points of use simultaneously, such as bathrooms and kitchens.
- **Constant Temperature Control:** Features steady temperature control with an LED smart digital display, allowing precise temperature adjustments between 95°F (35°C) and 149°F (65°C).
- **Energy Efficient:** High-performance output of 68,000 BTU per hour with advanced combustion technology to minimize gas consumption.
- **Durable Construction:** Crafted with a stainless steel body for corrosion resistance and an oxygen-free copper water tank for minimal heat loss and extended service life.
- **Multi-Protection:** Includes flame failure device, anti-freeze protection, overheating protection, dry burning protection, corrosion protection, overpressure protection, and short circuit protection.

3.2 Product Components



Figure 3.1: VELPAX Propane Tankless Water Heater and Accessories. This image displays the main water heater unit alongside its included accessories: ducting components, water inlet/outlet pipes, air inlet pipe, and expansion screws.

The main unit includes the digital display, gas inlet, water inlet, and water outlet. Accessories typically include:

- Ducting (vent pipe)
- Water inlet/outlet pipes (hoses)
- Air inlet pipe
- Expansion screws for mounting

18L LARGE CAPACITY
 Kitchen and bathroom use at the same time, still enjoy the surging water flow, easy to meet the water use of large households

Bathing water

Kitchen water

18L

Water for washing up

Lift increase 10m
 Easily overcome long water pipes and leapfrog challenges

Water volume upgraded to 18L
 More water for more comfort

Figure 3.2: 18L Large Capacity Water Heater Usage. This graphic illustrates the water heater's capability to supply hot water for multiple applications simultaneously, such as bathing, kitchen use, and washing up, highlighting its suitability for large households.

4. SETUP AND INSTALLATION

The VELPAX tankless water heater is designed for quick and hassle-free setup. Follow these steps for proper installation:

- Mounting:** Choose a suitable wall location for mounting. Ensure the wall can support the unit's weight (approximately 24.5 pounds). Use the provided expansion screws for secure installation.
- Water Connections:** Connect the standard 1/2" NPT water fittings. The unit has clearly marked inlet and outlet ports. Ensure all water pipe connections are tight to prevent leaks.
- Gas Connection:** Connect the propane gas pipe to the gas inlet. Use appropriate gas-rated fittings and ensure all gas connections are sealed and tested for leaks using a soapy water solution.
- Ventilation System:** Install the 2.5" horizontal vent pipe. Ensure the vent system is properly sealed and directs combustion gases safely to the outside. Adhere to all local building codes for ventilation.

5. **Power Connection:** Plug the power cable into a grounded 120V electrical outlet. The unit requires power for ignition and the digital display.

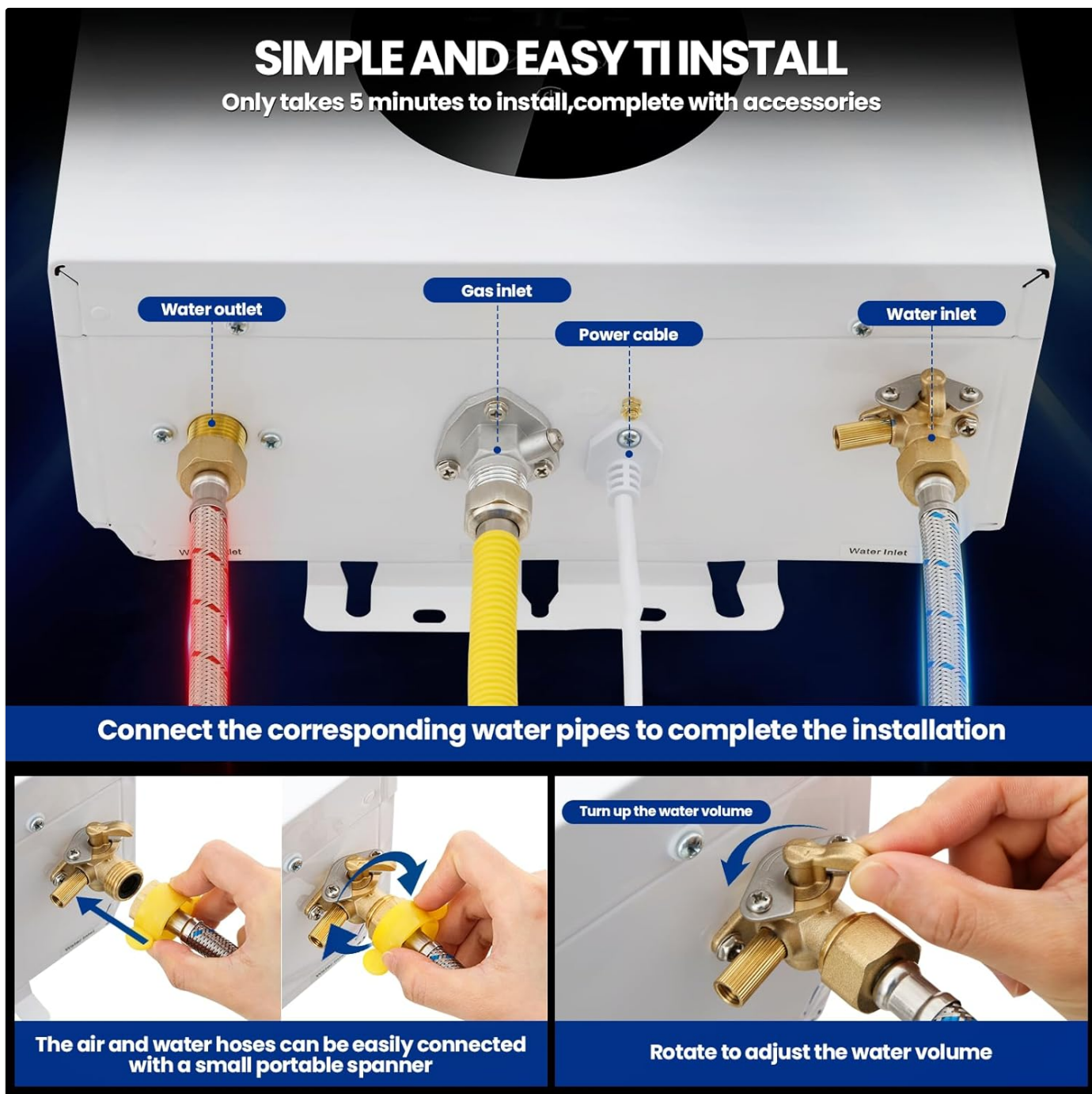


Figure 4.1: Simple and Easy Installation Steps. This image demonstrates the straightforward process of connecting the water and gas pipes to the unit, including how to use a spanner for secure connections and adjust water volume.

It is highly recommended that installation be performed by a qualified professional to ensure compliance with all local codes and safety standards.

5. OPERATING INSTRUCTIONS

Once installed and connected, operating your VELPAX tankless water heater is straightforward:

1. **Power On:** Ensure the unit is plugged in and the gas supply is open.
2. **Activate Water Flow:** Open a hot water faucet. The unit will detect water flow and automatically initiate the ignition process.
3. **Temperature Adjustment:** Use the intelligent touch screen LED display to set your desired water temperature.

- Press the **Temperature Up** button to increase the temperature.
- Press the **Temperature Down** button to decrease the temperature.
- The display shows the current water temperature in Fahrenheit.

The temperature can be adjusted between 95°F (35°C) and 149°F (65°C).

4. **Monitoring:** The digital display will show the current water temperature and operational status.
5. **Shut Off:** Close the hot water faucet. The unit will automatically stop heating and turn off.

INTELLIGENT AND CLEAR TOUCH SCREEN

One-click direct access to exclusive temperatures

Temperature up
 Temperature down

Switch button

OUR TANKLESS WATER HEATER

- ✓ Heats up quickly and immediately
- ✓ Uninterrupted supply of hot water
- ✓ High efficiency and energy saving
- ✓ Compact and small size

VS

TRADITIONAL TANK WATER HEATER

- ✗ Long heating time, need to wait
- ✗ Only one tank of hot water in reserve
- ✗ Continuous gas consumption
- ✗ Only be installed on load-bearing walls

Figure 5.1: Intelligent and Clear Touch Screen Display. This image highlights the user-friendly digital interface of the water heater, showing the temperature display and control buttons for easy adjustment.

6. MAINTENANCE

Regular maintenance ensures the longevity and efficient operation of your tankless water heater.

- **Draining in Cold Weather:** If the unit is in an unheated area and will not be used for an extended period during cold

weather, it is crucial to drain all residual water from the unit to prevent freezing and damage. Open the pressure relief valve and disconnect water lines to ensure complete drainage.

- **Cleaning Exterior:** Wipe the exterior of the unit with a soft, damp cloth. Do not use abrasive cleaners or solvents.
- **Ventilation Check:** Periodically inspect the vent pipe for any obstructions, damage, or signs of corrosion. Ensure it is clear and securely connected.
- **Gas Line Inspection:** Annually inspect gas lines and connections for any signs of leaks or damage. This should ideally be done by a qualified technician.
- **Water Inlet Filter:** Check and clean the water inlet filter periodically to prevent sediment buildup, which can affect water flow and efficiency.

7. TROUBLESHOOTING

This section provides solutions to common issues you might encounter with your tankless water heater.

Problem	Possible Cause	Solution
No hot water / Unit not igniting	No gas supply or low gas pressure. No water flow or insufficient water pressure (below 3.6 PSI). Power supply issue. Ignition failure.	Check propane tank level and gas valve. Ensure water supply is on and pressure is adequate. Verify unit is plugged in and circuit breaker is not tripped. Contact qualified technician if ignition issues persist.
Inconsistent water temperature (hot/cold fluctuations)	Insufficient water flow to maintain ignition. Sediment buildup in water lines or unit. Temperature sensor malfunction.	Ensure adequate water flow (do not restrict flow too much). Clean water inlet filter. Consider professional descaling. Contact qualified technician.
Unit leaks water	Loose water connections. Damaged internal components (e.g., heat exchanger). Frozen pipes (if not drained in cold weather).	Tighten all water connections. Immediately shut off water and gas supply. Contact qualified technician. Allow unit to thaw naturally, then inspect for damage.
Unit makes unusual noises	Mineral buildup (scaling). Fan or pump issue.	Consider professional descaling. Contact qualified technician.

If you encounter issues not listed here or if solutions do not resolve the problem, please contact VELPAX customer support or a certified technician.

8. SPECIFICATIONS

Detailed technical specifications for the VELPAX Propane Tankless Water Heater, Model HWRSQ-18L-001.

Attribute	Detail
Brand	VELPAX
Model Number	HWRSQ-18L-001
Product Dimensions (W x H)	13.8"W x 21.7"H
Item Weight	24.5 pounds
Style	Propane (LPG)
Maximum Temperature	149 Degrees Fahrenheit (65 Degrees Celsius)
Flow Rate	4.74 GPM (Gallons Per Minute) / 18 Liters Per Minute
Rated Heat Load	68,000 BTU/hour (28 kW)
Inlet Gas Pressure	2.8 kPa
Suitable Water Pressure	0.2 - 0.8 MPa (approx. 29 - 116 PSI), minimum 3.6 PSI for operation
Ignition Type	Automatic
Power Supply	110V / 60Hz
Mounting Type	Wall
Special Features	Multiple Safety Protections, Advanced Combustion Technology, LED Smart Digital Display

PRODUCT SPECIFICATION

● Length : 13.8inch

● Width : 6.3inch

● Height : 21.7inch

Type of gas : Propane/LPG

Power supply : 110V / 60HZ

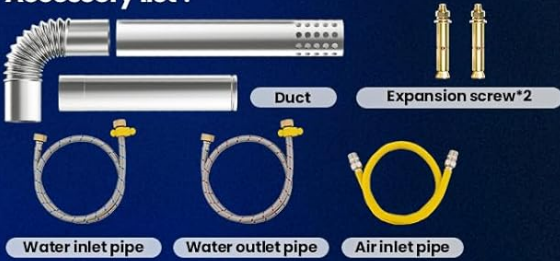
Rated heat load(kW) : 28

Inlet gas pressure : 2.8kpa

Suitable water pressure(Mpa) : 0.2-0.8

Ignition type : Automatic

Accessory list :



1/2" NPT
(Water outlet)

1/2" NPT
(Gas inlet)

1/2" NPT
(Water inlet)



Figure 8.1: Product Specification Diagram. This image provides a visual representation of the water heater's dimensions and lists key technical specifications, including gas type, power supply, heat load, and water pressure requirements.

9. WARRANTY AND SUPPORT

For warranty information, please refer to the documentation included with your product packaging or visit the official VELPAX website. Warranty terms and conditions may vary.

If you require technical assistance, troubleshooting beyond this manual, or have questions regarding parts and service, please contact VELPAX customer support. Have your model number (HWRSQ-18L-001) and purchase date ready when contacting support.

VELPAX Customer Support:

Website: Visit the VELPAX Store on Amazon (for general brand information)

Contact: Refer to product packaging or manufacturer's website for direct contact details (phone/email).

