



[Manuals.plus](#) /

› [BOTLOG](#) /

› BOTLOG 72" Kitchen Pantry Cabinet Instruction Manual, Ash Gray

BOTLOG BOT-MD-021/BOT-PB-017/015

BOTLOG 72" Kitchen Pantry Cabinet Instruction Manual

Model: BOT-MD-021/BOT-PB-017/015 | Color: Ash Gray

1. INTRODUCTION

Thank you for choosing the BOTLOG 72" Kitchen Pantry Cabinet. This manual provides essential information for the safe assembly, operation, and maintenance of your new cabinet. Please read all instructions carefully before beginning assembly and retain this manual for future reference.

1.1 Safety Information

WARNING: Always secure the cabinet to the wall using the provided anti-tipping devices to prevent tipping. Failure to do so can result in serious injury. Be cautious during assembly to avoid injury from sharp edges or heavy components. Keep small parts away from children.

Ensure all connections are tight before use. Do not overload shelves. Distribute weight evenly across all storage areas.

2. PARTS LIST

Before assembly, unpack all components and verify that all parts listed in your package's hardware and component list are present and undamaged. If any parts are missing or damaged, please contact customer support.

ARRIVERS IN 2 BOXES



Figure 2.1: Diagram showing all components and their dimensions for the BOTLOG 72-inch Kitchen Pantry Cabinet.

This image illustrates the various parts of the cabinet, including the upper and lower sections, drawers, and shelves, along with their approximate dimensions. Note the two different drawer sizes and the adjustable shelf positions.

3. ASSEMBLY INSTRUCTIONS

This kitchen storage cabinet is divided into two packages. Please ensure you have received both packages before starting the assembly process. Assembly typically requires two adults.

3.1 Tools Required

- Phillips head screwdriver
- Hammer (optional, for dowels)
- Measuring tape (optional, for placement)
- Drill (for anti-tipping device installation)

3.2 Step-by-Step Assembly

Follow the detailed, numbered instructions provided in your product packaging. Each step is designed to be clear and easy to understand. It is recommended to lay out all parts and hardware before beginning.



Figure 3.1: Internal view of the BOTLOG Kitchen Pantry Cabinet, highlighting storage compartments, microwave area, and drawers.

This image provides an overview of the assembled cabinet's internal structure, showing the various storage sections and their intended uses. The microwave area is centrally located for easy access.

3.3 Door Alignment

If the cabinet doors appear misaligned after assembly, they can be adjusted using the hinges. The hinges are designed for flexibility to ensure a perfect fit.



Figure 3.2: Diagram illustrating common door alignment issues such as gaps, overlap, and vertical offset.



Figure 3.3: Detailed steps for adjusting cabinet door hinges. Turning screws to the right or left can adjust the door's position horizontally and vertically.

Use a screwdriver to turn the adjustment screws on the hinges. Small turns can make significant changes. Adjust slowly until the doors are properly aligned.

4. OPERATING INSTRUCTIONS

The BOTLOG Kitchen Pantry Cabinet is designed for versatile storage and functionality in your kitchen or dining area.

4.1 Storage Compartments

The cabinet features 10 enclosed compartments of various sizes, ideal for storing spices, baking ingredients, cookware, and other kitchen essentials. The two wooden drawers provide dedicated space for organizing knives, forks, and other utensils, helping to reduce clutter.



Figure 4.1: Close-up view of the spacious drawers, demonstrating their capacity for organizing various kitchen items.

The drawers have a deeper design (11.8" deep) to accommodate a variety of items, from dinnerware to small appliances.

4.2 Adjustable Shelves

The cabinet includes two adjustable shelves that can be removed or adjusted to three different heights. This allows you to customize the storage space to fit taller items or specific kitchen appliances.

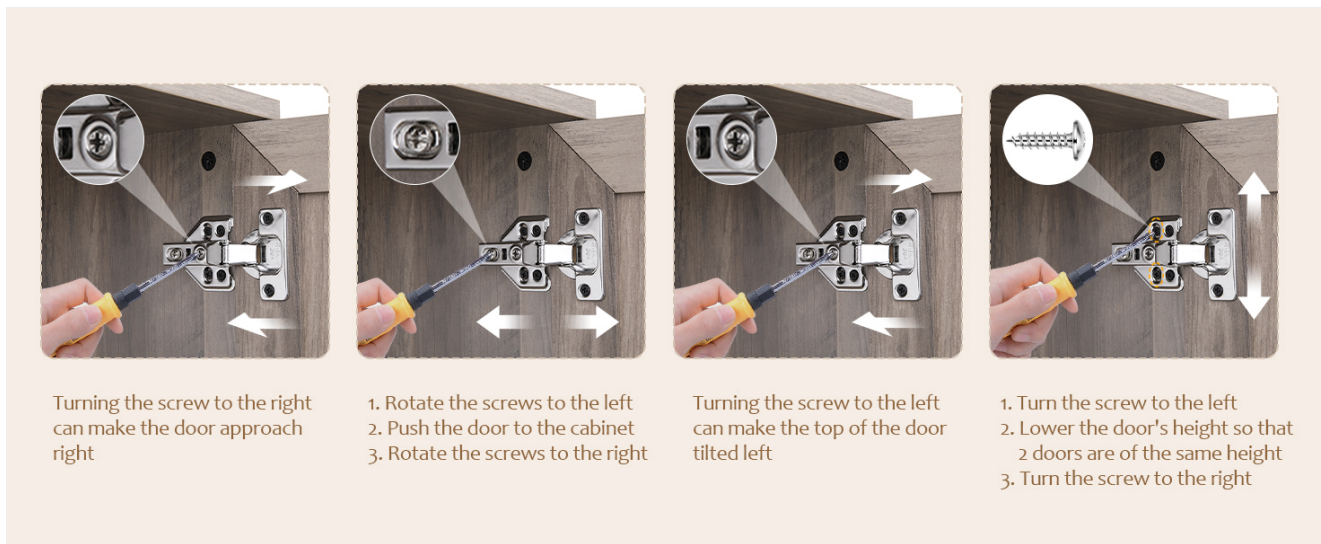


Figure 4.2: Diagram showing the adjustable shelves and their height options, allowing for customized storage.

4.3 Microwave Stand & Cable Management

The central open countertop provides a spacious area (47" wide and 32.7" tall) suitable for a microwave, coffee maker, or other small appliances. It is designed to be at a comfortable height for operation.



Figure 4.3: Image highlighting the spacious countertop and the two integrated cable management holes to keep appliance wires tidy.

Two cable management holes are integrated into the back panel of the countertop area to help organize and conceal appliance cords, maintaining a clean and functional space.

5. MAINTENANCE

Proper care and maintenance will ensure the longevity and appearance of your BOTLOG Kitchen Pantry Cabinet.

5.1 Cleaning

Wipe all surfaces with a soft, damp cloth. Avoid using abrasive cleaners, harsh chemicals, or solvents, as these can damage the finish. The cabinet's surface is painted with waterproof paint, making it resistant to moisture and easy to clean.

5.2 General Care

Periodically check all screws and fasteners to ensure they remain tight. Re-tighten if necessary. Ensure the anti-tipping devices are securely attached to the wall and the cabinet. Avoid placing excessively hot items directly on the countertop without protection.

6. TROUBLESHOOTING

This section addresses common issues you might encounter with your cabinet.

6.1 Misaligned Doors

If cabinet doors do not close properly or appear uneven, refer to section 3.3, "Door Alignment," for detailed instructions on how to adjust the hinges.

6.2 Stability Issues

If the cabinet feels unstable, ensure that the anti-tipping devices are correctly installed and securely anchored to a wall stud. Verify that the cabinet is placed on a level surface. Do not exceed the weight capacity of the shelves.

7. SPECIFICATIONS

Brand	BOTLOG
Model Name	BOT-PB
Product Dimensions	15.7"D x 47.2"W x 72"H
Color	Grey
Material	Engineered Wood
Item Weight	70.8 Pounds
Number of Shelves	6
Number of Compartments	10
Special Features	Adjustable Shelf, Anti-Tipping, Flexible hinge, Weatherproof
Assembly Required	Yes

8. WARRANTY AND SUPPORT

For warranty information or customer support regarding your BOTLOG Kitchen Pantry Cabinet, please refer to the documentation included with your purchase or visit the official BOTLOG brand store online. Contact details for support are typically found on the product packaging or the retailer's website.

Please retain your proof of purchase for any warranty claims.