

ClipBlur M9

ClipBlur M9 1080p Wireless Security Camera User Manual

1. INTRODUCTION AND OVERVIEW

This manual provides comprehensive instructions for the ClipBlur M9 1080p Wireless Security Camera. This device is engineered for outdoor surveillance, offering high-definition 1080p video resolution, advanced color night vision, and intelligent AI human detection capabilities. It is designed to provide reliable monitoring for your property.

Key Features:

- **1080p HD Video:** Captures clear and detailed footage.
- **2.4GHz Wi-Fi Connectivity:** Ensures stable wireless connection (5GHz Wi-Fi is not supported).
- **Encrypted Cloud Storage:** Securely stores recordings with AES 128-bit encryption (subscription sold separately).
- **5200mAh Battery:** Provides long-lasting power for continuous operation (solar panel not included).
- **Color Night Vision:** Delivers full-color video even in low-light conditions.
- **Two-Way Talk:** Allows real-time audio communication through the camera.
- **Shareable Camera Access:** Enables multiple users to view the live feed.
- **AI Human Detection:** Reduces false alerts by distinguishing human movement from other objects.



Image 1.1: The ClipBlur M9 1080p Wireless Security Camera, shown with a smartphone displaying its live feed. This camera features a white body with a black faceplate, integrated spotlights, and a wall-mount bracket.

2. WHAT'S IN THE BOX

The ClipBlur M9 1080p Wireless Security Camera package includes the following components:

- Security Camera body (1 unit)

3. SETUP INSTRUCTIONS

Follow these steps to set up your ClipBlur M9 Wireless Security Camera and connect it to your Wi-Fi network.

Important Wi-Fi Information:

This security camera is compatible only with **2.4GHz Wi-Fi networks**. It does not support 5GHz Wi-Fi. Please ensure your router broadcasts both 2.4GHz and 5GHz networks with distinct names (SSIDs) to connect the device to the correct 2.4GHz network during setup.



Image 3.1: Visual representation indicating compatibility with 2.4GHz Wi-Fi networks only, and incompatibility with 5GHz Wi-Fi networks.

Connection Steps:

1. **Add Device:** Open the companion application on your smartphone and tap the "+" icon to add a new device.
2. **Select Device Type:** Choose "Battery Camera" or the appropriate camera type from the list.
3. **Enter Pairing Mode:** Press and hold the bottom button on the camera for 8 seconds until you hear a voice prompt indicating it has entered pairing mode.
4. **Bluetooth Connection:** The application will automatically attempt to connect via Bluetooth.
5. **Bluetooth Connection Complete:** Confirm that the Bluetooth connection is successful within the app.
6. **Select Wi-Fi Network:** Choose your 2.4GHz Wi-Fi network from the list and enter the correct password. Confirm the network information.
7. **Pairing Confirmation:** After confirming the correct Wi-Fi information, the pairing time will appear.
8. **Connection Complete:** The camera will connect to your Wi-Fi network, and the setup process will be complete.

2.4GHz Wi-Fi Connection steps

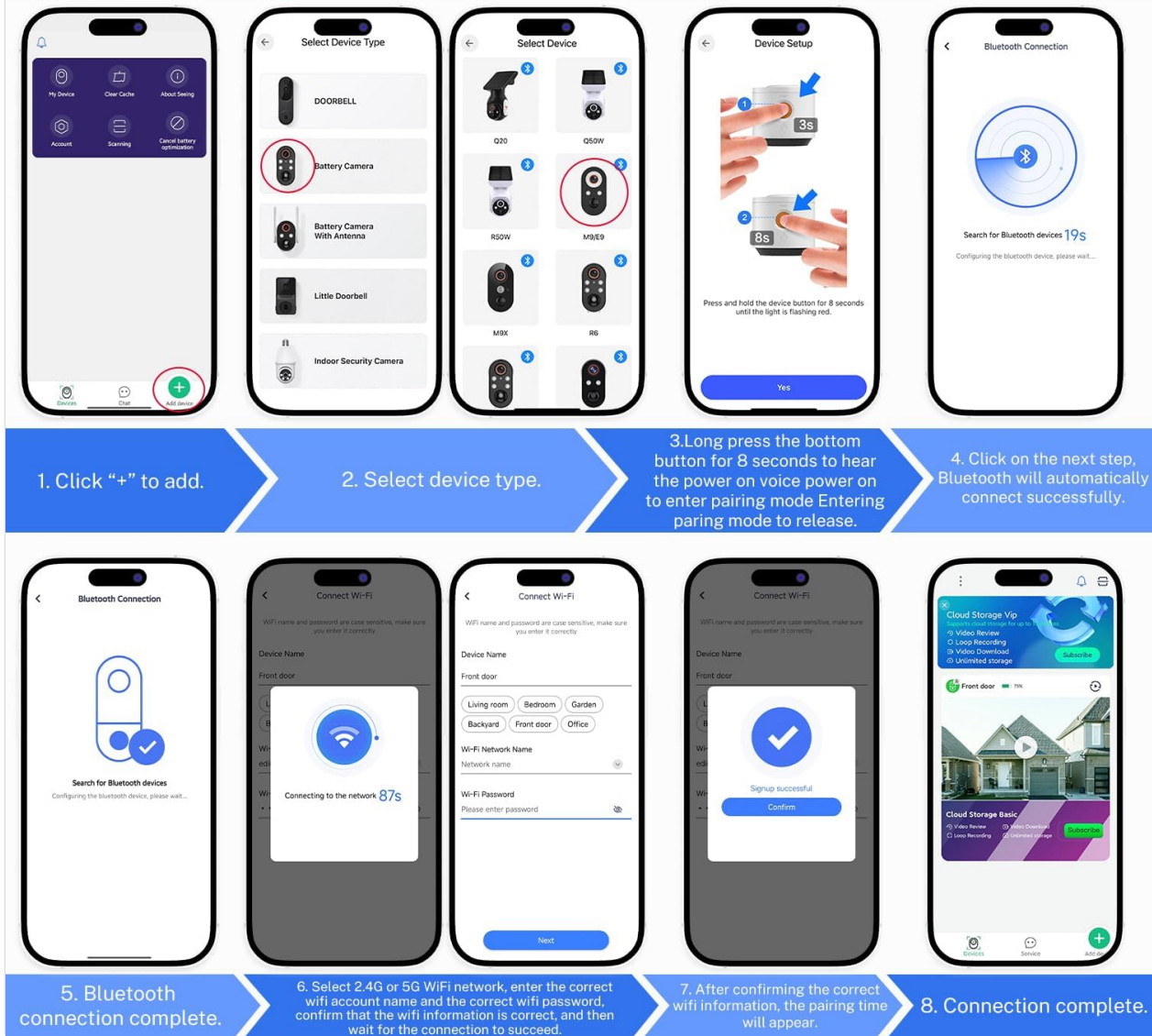


Image 3.2: A visual guide illustrating the 8 steps for connecting the ClipBlur M9 camera to a 2.4GHz Wi-Fi network using the mobile application.

4. OPERATING INSTRUCTIONS

4.1 AI Human Detection

The camera features intelligent AI human detection, which is designed to minimize false alarms. It identifies human shapes and sends notifications only when a person is detected, ignoring movements from pets, vehicles, or other non-human objects.

Intelligent Alerts Powered by AI

Get notifications only when people are detected - no more distractions from pets or cars.

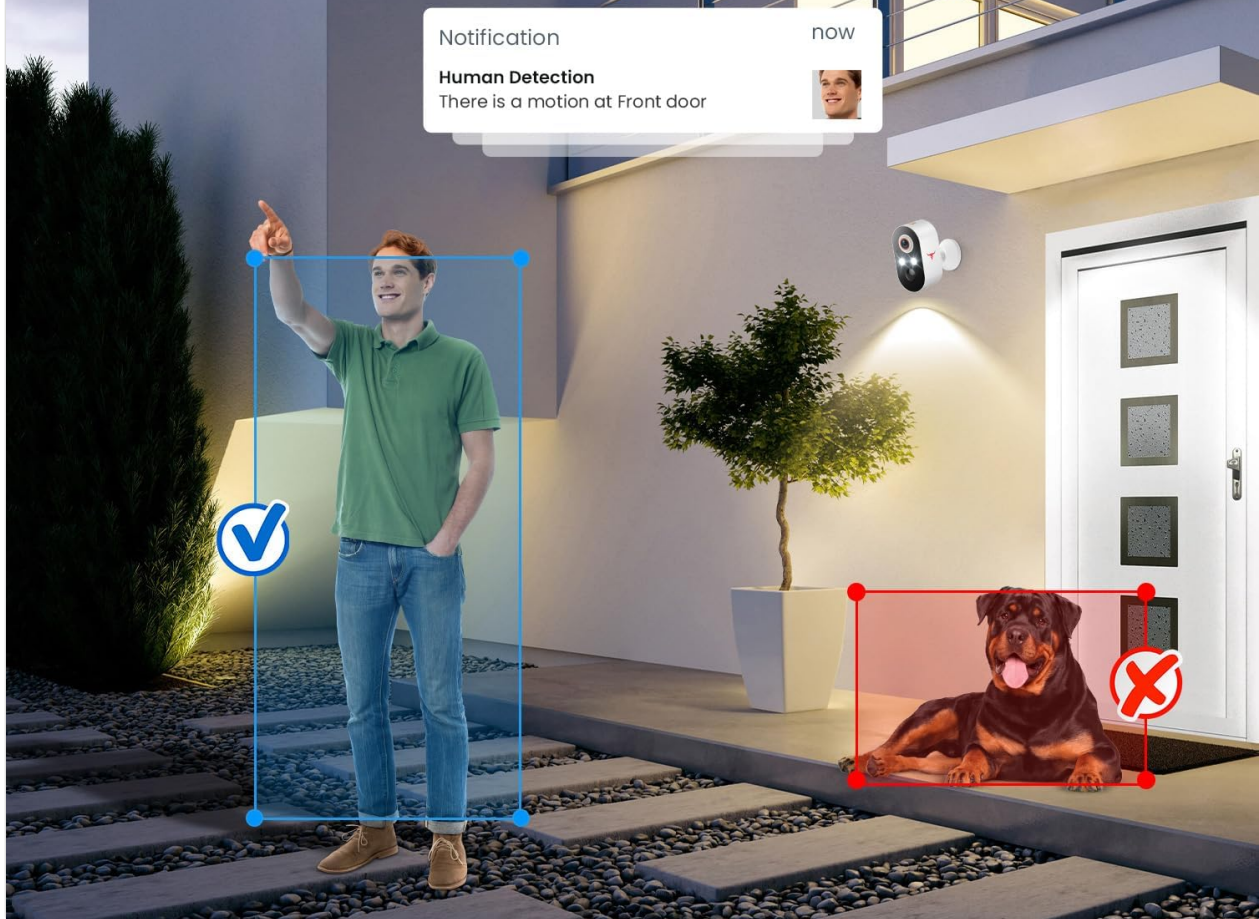


Image 4.1: Illustration of AI Human Detection, highlighting how the camera accurately detects a person while disregarding a pet, reducing irrelevant alerts.

4.2 Two-Way Talk

Utilize the two-way talk function to communicate with individuals near your camera. This feature allows you to speak and listen through the camera using your smartphone application, enabling interaction with visitors or delivery personnel from any location.

Two-Way Talk at Your Fingertips

Speak with visitors from anywhere using two-way audio on your phone.



Image 4.2: Depiction of the two-way talk functionality, showing a user communicating with someone outside their home via the camera and smartphone app.

4.3 Color Night Vision

The ClipBlur M9 camera is equipped with color night vision, ensuring that you capture clear, full-color details even in complete darkness. This enhances visibility and identification compared to traditional black and white night vision.

Color Night Vision that Sees it All

From dawn till dusk, capture every detail clearly, even in complete darkness.

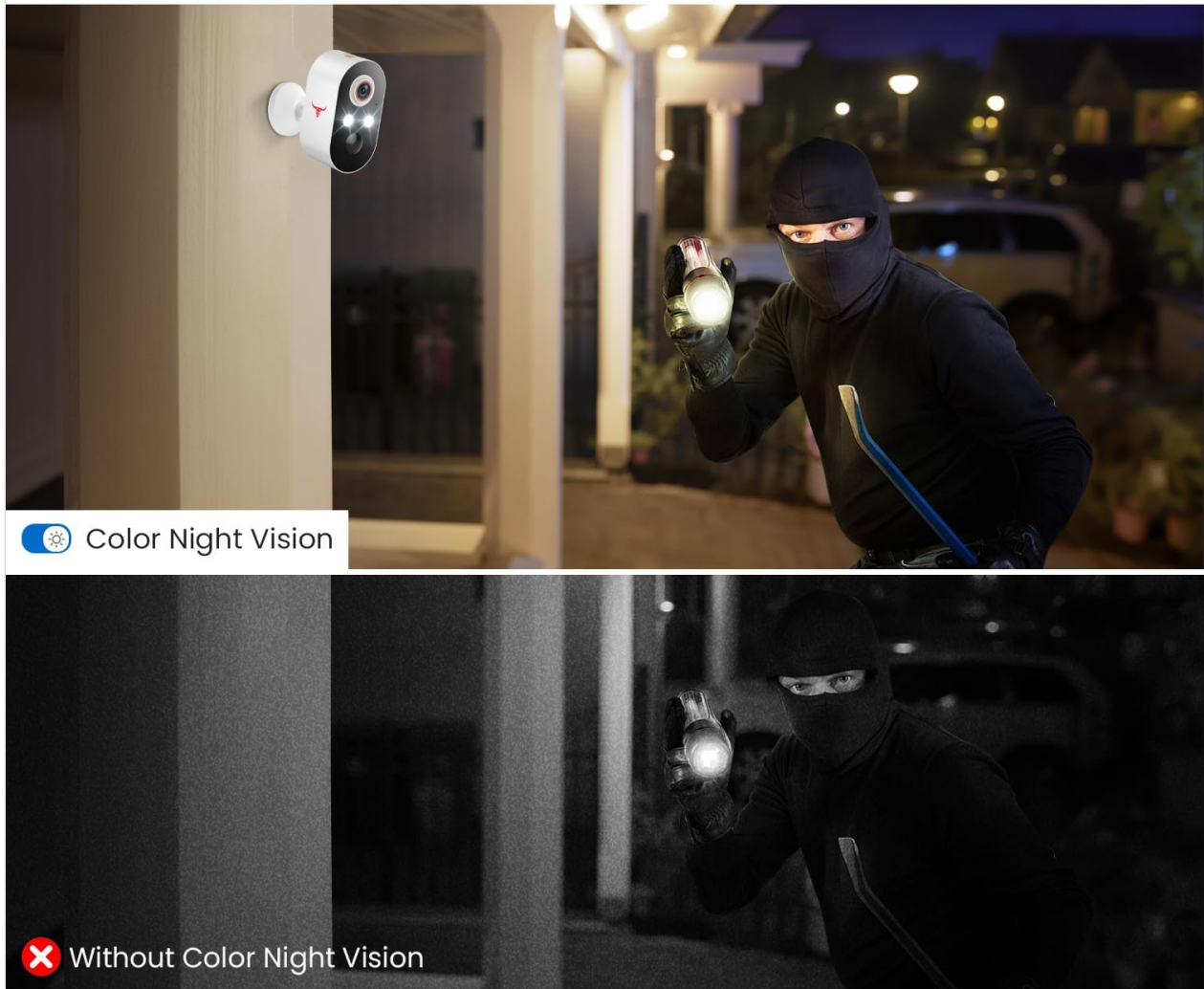


Image 4.3: A side-by-side comparison demonstrating the superior clarity and color detail provided by the camera's color night vision feature versus standard monochrome night vision.

4.4 Encrypted Cloud Storage

For secure storage of your video recordings, the camera supports encrypted cloud storage. Footage is stored safely with AES 128-bit encryption, allowing you to access it whenever needed. Please note that cloud storage is a subscription-based service and is sold separately.

Encrypted Cloud Storage for Secure Footage (sold separately)

365-Day Cloud Storage Plan (Basic) – \$29.99 USD

Store recordings safely with AES 128-bit encryption. Access them whenever needed (sold separately).



Image 4.4: Visual illustrating the encrypted cloud storage option for the camera, showing secure storage of video footage accessible via a cloud service.

4.5 Shareable Camera Access

The camera allows you to share access to the live feed with family members or trusted individuals, enabling collaborative security monitoring.

5. MAINTENANCE

5.1 Battery Life

The camera is equipped with a built-in 5200mAh battery for extended operation. The battery life can vary based on usage, motion detection frequency, and environmental conditions. A solar panel is not included with this model for charging.

5.2 Weather Resistance

The ClipBlur M9 security camera has an IP66 international protection rating, making it resistant to dust and water. It is designed to function effectively in various weather conditions, including rain, sun, and extreme temperatures.

Built to Endure Any Weather

From snowstorms to heatwaves, this doorbell stands strong.

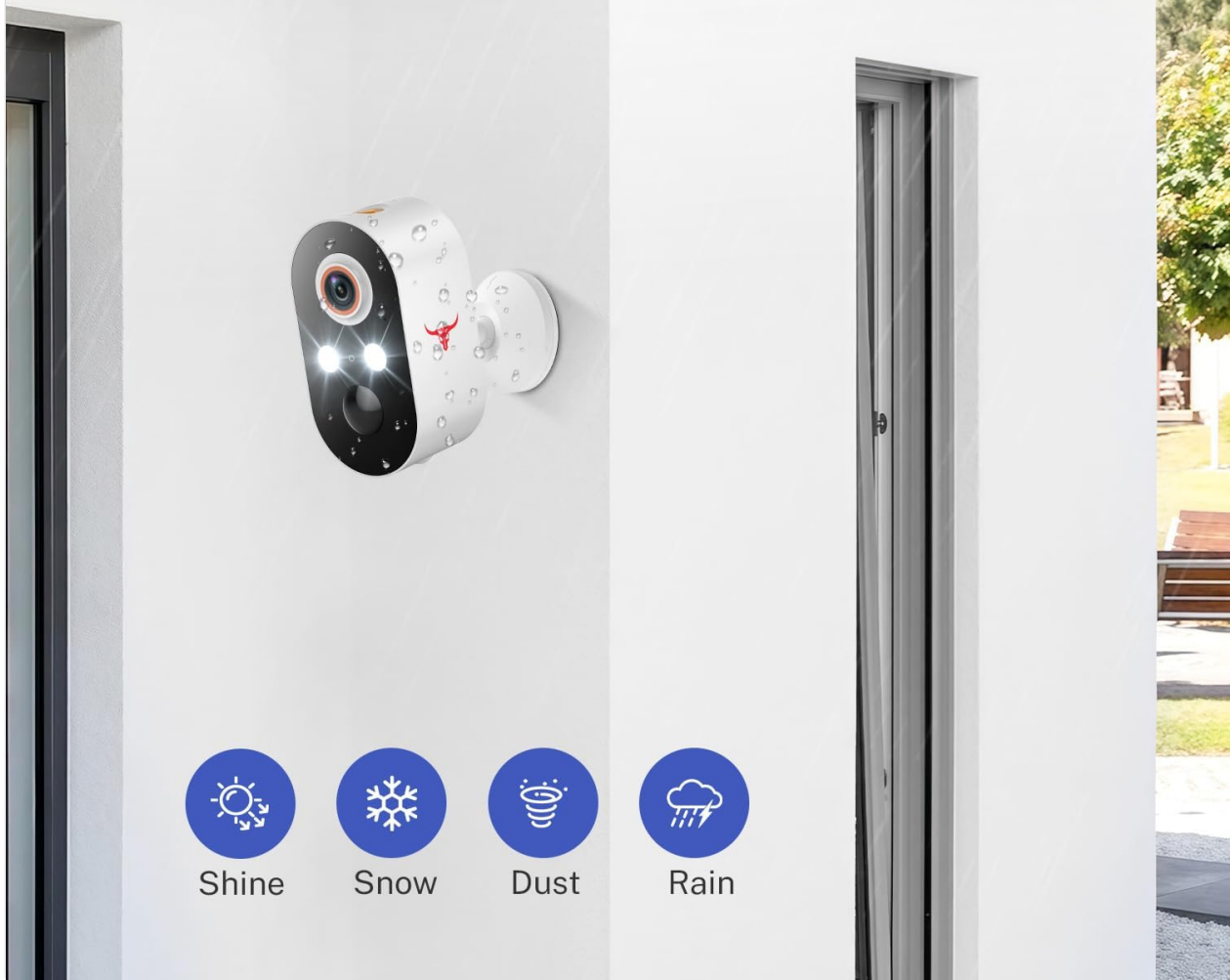


Image 5.1: The ClipBlur M9 camera mounted outdoors, demonstrating its resilience against diverse weather elements such as sun, snow, dust, and rain.

6. TROUBLESHOOTING

This section addresses common questions and issues you might encounter with your ClipBlur M9 camera.

Q: Does the camera support 5GHz Wi-Fi?

A: No, the camera only works with 2.4GHz Wi-Fi. Ensure your router broadcasts both 2.4GHz and 5GHz networks with different names (SSIDs) to connect the device to the correct one.

Q: Is a solar panel included with this camera?

A: No, a solar panel is not included. The camera features a built-in 5200mAh battery for power.

Q: Does the camera support SD cards?

A: This device supports cloud storage for videos only. SD cards are not supported.

Q: How far away can the smart human detection sense a person?

A: The human detection feature is effective for distances between 20 to 25 feet.

Q: Are the camera's videos able to be stored online?

A: Yes, videos can be stored online via a cloud storage subscription. A free trial may be available, after

which billing will commence unless canceled.

Q: Is the camera made to resist extreme weather?

A: The security camera has an IP66 rating, making it resistant to dust and water. It is designed to perform well in rain, sun, and varying temperatures.

Q: How well does the security camera work in night vision mode?

A: It ensures 1080p HD clarity day and night, with color night vision providing clear images in any light condition.

7. SPECIFICATIONS

Detailed technical specifications for the ClipBlur M9 1080p Wireless Security Camera:

Model Name:

1080p Wi-Fi Security Camera

Model Number:

M9

Indoor/Outdoor Usage:

Outdoor

Video Capture Resolution:

1080p

Power Source:

Battery Powered (5200mAh)

Connectivity Protocol:

Wi-Fi (2.4GHz Only)

Wireless Communication Technology:

Wi-Fi

Controller Type:

Android (Compatible with Smartphone)

Mounting Type:

Wall Mount

Form Factor:

Bullet

Installation Type:

Screw In

Night Vision Range:

33 Feet

Low Light Technology:

Night Color

Alert Type:

Motion Only (AI Human Detection)

International Protection Rating:

IP66

Material:

Acrylonitrile Butadiene Styrene (ABS)

Color:

White

Item Dimensions (L x W x H):

1.89 x 1.87 x 3.54 inches

Item Weight:

9.1 ounces

Batteries:

2 A batteries required (included)

Manufacturer:

Eken Innovation (Shenzhen) Co., Ltd

8. WARRANTY AND SUPPORT

For warranty information, technical support, or any inquiries regarding your ClipBlur M9 Wireless Security Camera, please refer to the contact details provided with your product packaging or visit the official ClipBlur website. Our customer service team is available to assist you with setup, troubleshooting, and general product questions.