

[Manuals.plus](#) /

› [HUIZHEN](#) /

› HUIZHEN Replacement Parts Manual for Dreame D10 Plus Gen 2 (RLD32GD) Robot Vacuum

HUIZHEN D10 Plus Gen 2 RLD32GD

HUIZHEN Replacement Parts Manual

FOR DREAME D10 PLUS GEN 2 (RLD32GD) ROBOT VACUUM CLEANER

Introduction

This manual provides instructions for the installation, maintenance, and replacement of the HUIZHEN 21-piece accessory set for the Dreame D10 Plus Gen 2 (RLD32GD) Robot Vacuum Cleaner. Regular replacement of these parts ensures optimal performance and extends the lifespan of your robot vacuum.

Package Contents

The HUIZHEN 21-piece replacement parts set includes the following items:

- 1 x Main Brush
- 6 x Side Brushes
- 4 x HEPA Filters
- 4 x Mop Pads
- 6 x 4.0L Dust Bags

Compatibility

This accessory set is specifically designed for and compatible with the **Dreame D10 Plus Gen 2 Robot Vacuum Cleaner (Model RLD32GD)**.

Compatible Model

Compatible with Dreame D10 Plus Gen 2 RLD32GD



Image: Overview of replacement parts installed on the Dreame D10 Plus Gen 2 robot vacuum. This image shows the main brush, HEPA filter, side brush, and dust bag in relation to the vacuum cleaner.

Installation Instructions

Always power off your robot vacuum cleaner and disconnect it from the charging dock before performing any installation or maintenance.

1. Main Brush Installation

1. Turn the robot vacuum cleaner over.
2. Locate the main brush cover, usually secured by two tabs or latches. Press the tabs or lift the latches to remove the cover.
3. Remove the old main brush from its compartment.
4. Insert the new HUIZHEN main brush, ensuring the ends align with the slots in the vacuum. The V-shaped design should fit closely to the floor for effective cleaning.

5. Replace the main brush cover and press firmly until it clicks into place.

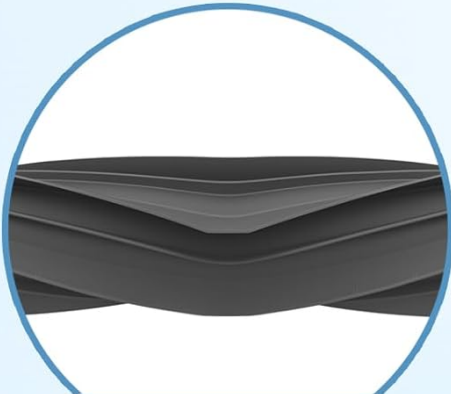
V-Shaped Roller Brush

Strong pickup for pet hair, dirt, dust & debris
Works on most floors—hardwood, carpet, tile & more

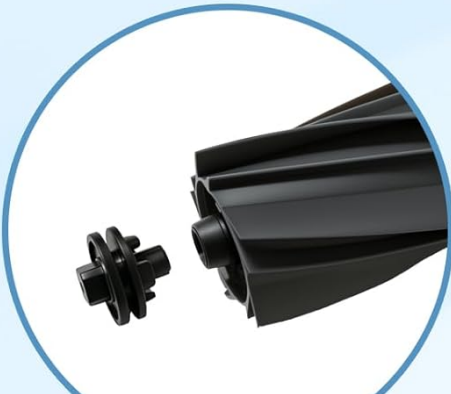


Image: V-Shaped Roller Brush designed for effective pickup on hardwood, carpet, and tile floors.

Deep Clean • Easy Maintenance



**V-Shaped Brush
Fits Close to Floors**



**Quick-Release Cap
Easy Hair Removal**



Image: Close-up of the V-shaped brush design and a quick-release cap for simplified hair removal and maintenance.

2. Side Brush Installation

1. Turn the robot vacuum cleaner over.
2. Locate the side brush. It is usually held by a screw or simply snaps into place.
3. If secured by a screw, use a screwdriver to remove it. Gently pull the old side brush upwards to detach it.
4. Align the new HUIZHEN side brush with the post on the vacuum. Press it down firmly until it snaps into place or re-secure it with the screw. Ensure a tight connection.

3-ARM SIDE BRUSH



Perfect Fit
Snaps in securely



Tight Connection
Sturdy and reliable



Gentle Bristles
Floor-friendly design



Image: Illustration of the 3-arm side brush, highlighting its perfect fit, sturdy connection, and gentle bristles for floor protection.

3. HEPA Filter Installation

1. Open the dustbin cover on your robot vacuum cleaner.
2. Remove the dustbin from the vacuum.
3. Locate the filter compartment within the dustbin. Remove the old HEPA filter.
4. Insert the new HUIZHEN HEPA filter into the dustbin, ensuring it is seated correctly and the sealed edges are properly aligned to prevent dust leakage.
5. Close the filter compartment, reinsert the dustbin into the vacuum, and close the dustbin cover.

High-Efficiency HEPA Filter

Captures **99.9%** of airborne particles as small as **0.1** microns



Image: High-Efficiency HEPA Filter designed to capture 99.9% of airborne particles as small as 0.1 microns, including pollen, smoke, hair, dust, debris, and pet fur.

Our Sealed-Edge Filter

Better Dust Containment



 **Sealed edges**
Helps keep fine dust
safely contained

Non-Sealed Filter

May Allow Side Leakage



 **Unsealed edges**
Fine dust may still escape
from the sides

Image: Comparison illustrating the benefit of a sealed-edge filter for better dust containment versus a non-sealed filter which may allow side leakage of fine dust.

4. Mop Pad Installation

1. Locate the mop pad attachment on your robot vacuum.
2. Remove the used mop pad, typically attached via Velcro or a sliding mechanism.
3. Attach a new HUIZHEN microfiber mop pad, ensuring it is securely fastened to the mop attachment.



Image: Microfiber Mop Pad, indicating it is machine washable and reusable, contributing to cost savings and a clean home.

5. Dust Bag Installation

1. Open the auto-empty station's dustbin compartment.
2. Carefully remove the full dust bag from the compartment.
3. Insert a new HUIZHEN 4.0L dust bag into the compartment, ensuring it is fully seated and the opening aligns with the station's suction port. The bag features a 4-layer leak-proof seal to minimize dust leakage.
4. Close the dustbin compartment cover securely.

Leakage Prevention Made Effective



Image: Illustration of the dust bag's construction, featuring durable non-woven fabric, a 4-layer leak-proof seal, and a high-precision seal to prevent leakage.

Maintenance Guidelines

Regular cleaning and timely replacement of parts are crucial for maintaining your robot vacuum's efficiency.

- **Main Brush:** Inspect weekly for tangled hair or debris. Use the cleaning tool provided with your vacuum to remove any obstructions. Replace every 6-12 months, or sooner if wear is visible.
- **Side Brushes:** Check weekly for bent bristles or debris. If bristles are bent, soak them in warm water for a few minutes to help them recover their shape. Replace every 3-6 months, or if bristles are significantly worn or damaged.
- **HEPA Filters:** Tap the filter gently to remove loose dust after each cleaning cycle. Do not wash HEPA filters with water unless explicitly stated by the vacuum manufacturer. Replace every 2-3 months, or more frequently if you have pets or allergies.

- **Mop Pads:** Remove and wash after each mopping session. The HUIZHEN mop pads are machine washable and reusable. Allow them to air dry completely before reattaching. Replace every 1-3 months depending on usage and wear.
- **Dust Bags:** Replace the dust bag when the vacuum's auto-empty station indicates it is full, or approximately every 4-8 weeks depending on usage and household dust levels.

Troubleshooting

- **Side Brushes are Bent or Curled:** If side brushes appear bent or curled from shipping or use, soak them in warm water for a few minutes. This can help them return to their original shape.
- **Vacuum Displays "Dustbin/Filter Error" After Filter Replacement:** Ensure the new HEPA filter is correctly and fully seated within the dustbin. Verify that the dustbin itself is properly inserted into the vacuum and its cover is securely closed. Some vacuums have sensors that require precise alignment for detection.
- **Parts Do Not Fit:** Double-check that your robot vacuum model is specifically the Dreame D10 Plus Gen 2 (RLD32GD). These parts are designed for this specific model.
- **Reduced Cleaning Performance:** This often indicates that brushes are worn, filters are clogged, or the dust bag is full. Refer to the maintenance guidelines for replacement intervals.

Specifications

Brand	HUIZHEN
Compatible Devices	Dreame D10 Plus Gen 2 Robot Vacuum Cleaner (RLD32GD)
Material	High-quality rubber, soft nylon bristles, high-efficiency HEPA filter material, microfiber, 4-layer non-woven fabric (dust bags)
Included Components	1 Main Brush, 6 Side Brushes, 4 HEPA Filters, 4 Mop Pads, 6 Dust Bags
Dust Bag Capacity	4.0 Liters
Reusability	Mop Pads are reusable; other components are for replacement.

Warranty Information

This product comes with a **1-year warranty**. Please retain your proof of purchase for any warranty claims.

Customer Support

For further assistance, questions, or concerns regarding your HUIZHEN replacement parts, please contact the seller or manufacturer through the platform where the purchase was made. Provide your order details and a clear description of the issue for prompt support.

