

[Manuals.plus](#) /

› [BlitzRock](#) /

› BlitzRock BR-F6 Outdoor Solar-Powered Rock Speakers Instruction Manual

BlitzRock BR-F6

BlitzRock BR-F6 Outdoor Solar-Powered Rock Speakers Instruction Manual

1. INTRODUCTION AND OVERVIEW

Thank you for choosing the BlitzRock BR-F6 Outdoor Solar-Powered Rock Speakers. These speakers are designed to provide high-quality audio in outdoor environments, blending seamlessly with your landscape. Featuring 80W of powerful stereo sound, solar charging capabilities, IPX7 waterproofing, and advanced Bluetooth connectivity, your speakers are built for durability and performance.

Please read this manual thoroughly before using your speakers to ensure proper operation and longevity.



Image: BlitzRock BR-F6 Outdoor Rock Speakers seamlessly integrated into a garden setting.

2. WHAT'S IN THE BOX

- Stone Speaker x2
- Power Cable x2
- Quick Start Guide x2

3. FEATURES

- **80W Total Powerful Sound:** Dual speaker system with bass and treble drivers, delivering 40W + 40W dual stereo for a total of 80W.
- **Solar Charging:** Enjoy up to 24 hours of uninterrupted music with solar charging technology.
- **Fast Charging:** Fully charged within 3 hours using the included adapter.
- **Easy Use & Stable Connection:** BT5.4 wireless technology with a range of up to 98.4 feet.
- **Weather-Resistant Design:** IPX7 waterproof, withstands rain, snow, dust, and harsh sunlight.
- **Wireless Design:** Rock-style outdoor speaker blends seamlessly into garden or backyard decor.
- **Auto Multi-Speaker Sync Tech:** No complicated setup; power on more speakers for auto-sync and full-garden surround sound.

4. SETUP

4.1 Initial Charging

Before first use, fully charge your speakers using the provided power cables. Alternatively, place them in direct sunlight to utilize the solar charging feature.

4.2 Powering On/Off

To turn on the speakers, press and hold the power button for 2 seconds. You will hear a "Power on" prompt tone, and the blue indicator lights will flash slowly (3 seconds on, 0.2 seconds off), indicating they are in power-on state. To turn off, press and hold the power button again.

4.3 Bluetooth Pairing (Single Speaker)

After powering on, the speaker will automatically enter Bluetooth pairing mode. On your mobile device, navigate to Bluetooth settings and select "BR-F6" from the list of available devices. Once connected, you will hear a "BT Connected" prompt.

4.4 TWS (True Wireless Stereo) Pairing (Multiple Speakers)

For true wireless stereo sound with multiple speakers, follow these steps:

1. Turn on the power switches of both speakers.
2. Double-click the BT button of one speaker (this will be your main speaker). You will hear a "BT Pairing" prompt tone, and its blue indicator lights will flash quickly (1 second on, 0.2 seconds off).
3. The secondary speaker will automatically connect to the main speaker. After successful connection, you will hear a "Synced" prompt tone.
4. Turn on Bluetooth on your mobile device and select "BR-F6" to connect. The main speaker is connected first, and the secondary speaker automatically follows its instructions.

It is recommended to place the main speaker in an easy-to-control position.

ALWAYS READY FOR OUTDOORS

Use Ambient Temperature Range -4°F to 158°F

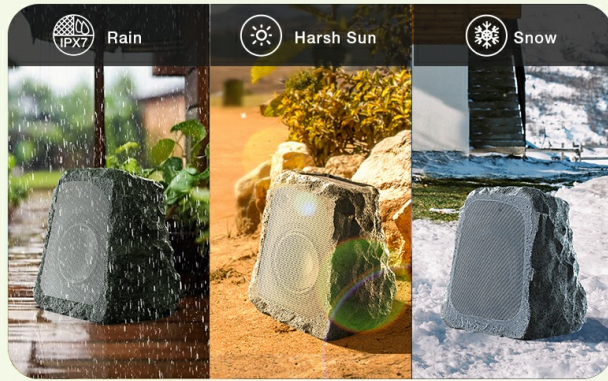


Image: Visual guide for auto-pairing and synchronized playback of BlitzRock speakers.

Auto-Pairing Synchronized Playback

No complicated setup

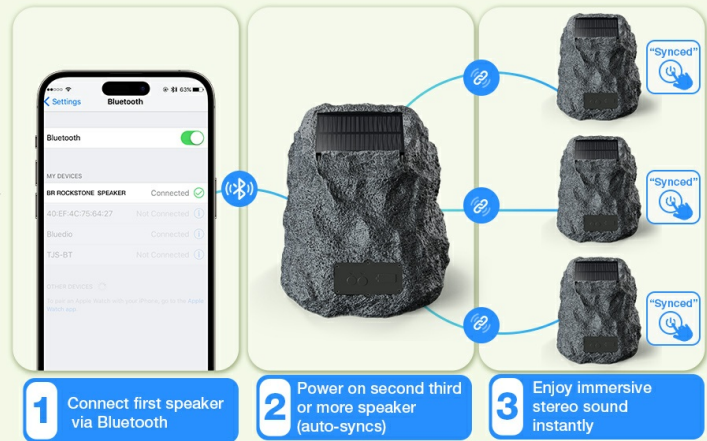


Image: Detailed steps on how to connect your BlitzRock speakers.

Video: Demonstration of TWS connection for BlitzRock outdoor speakers.

Video: Step-by-step guide on connecting BlitzRock outdoor speakers.

5. OPERATING INSTRUCTIONS

5.1 Audio Playback

Once connected via Bluetooth, you can control music playback (play, pause, skip tracks, adjust volume) directly from your connected device (smartphone, tablet, etc.). Ensure your device's volume is set appropriately for optimal sound from the speakers.

5.2 LED Light Modes

The speakers feature LED lights that can enhance your outdoor ambiance. Use the 'Light' button on the speaker's control panel to cycle through different light modes, including various colors and effects. The lights can also automatically turn on at night thanks to a built-in sensor.

80W POWERFUL VOLUME, PERFECT FOR OUTDOOR USE



Image: BlitzRock Wireless Realistic Rock Stone Speaker in an outdoor setting, highlighting its design.

6. CHARGING

6.1 Solar Charging

The speakers are equipped with solar panels on top. Place them in direct sunlight for automatic charging. This provides up to 24 hours of playtime on a full charge, ensuring continuous music enjoyment.

6.2 USB-C Fast Charging

For faster charging or when sunlight is limited, use the provided USB-C power cable. The speakers can be fully charged within 3 hours using this method. Ensure the silicone plug is securely tucked back after charging to prevent water ingress.



Image: Visual representation of the 24-hour ultra-long runtime provided by solar charging.

HOW DO I CONNECT?

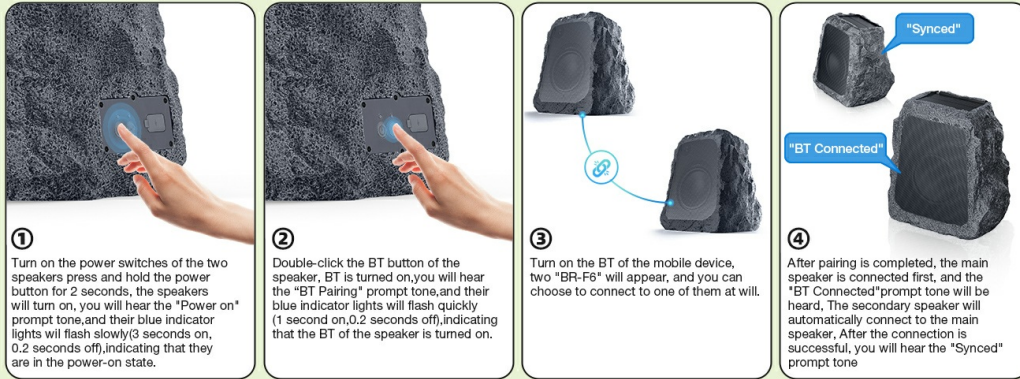


Image: Explanation of solar-powered and fast charging methods, including the USB-C port.

7. MAINTENANCE

7.1 Weather Resistance

The BlitzRock BR-F6 speakers are IPX7 waterproof, designed to withstand rain, snow, dust, and harsh sunlight. They are suitable for all seasons with minimal maintenance. However, if unused for long periods, it is recommended to charge them every 3 months to maintain battery health.

7.2 Cleaning

Clean the speakers with a soft, damp cloth. Avoid using harsh chemicals or abrasive materials that could damage the finish or solar panel.



Image: Illustration of the double waterproof technology and drainage hole for durability.



Image: Feature comparison table, emphasizing the IPX7 waterproof rating.

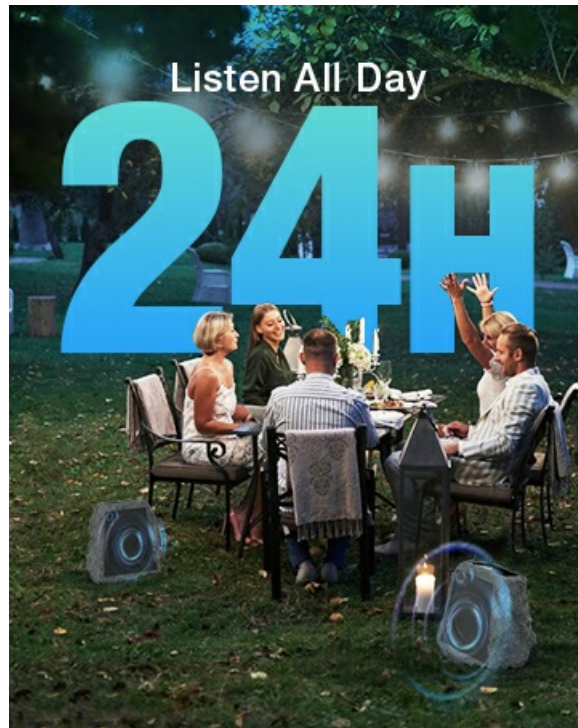


Image: Close-up view of the speaker's solar panel for charging.

8. TROUBLESHOOTING

Problem	Possible Cause	Solution
Speaker does not power on	Low battery; Power button not pressed correctly	Charge the speaker via solar or USB-C; Press and hold the power button for 2 seconds.
Unable to connect via Bluetooth	Speaker not in pairing mode; Device Bluetooth off; Speaker out of range	Ensure speaker is on and blue light is flashing; Turn on Bluetooth on your device; Move device closer to speaker (within 98.4 ft).

Problem	Possible Cause	Solution
TWS pairing failed	Incorrect pairing sequence	Follow TWS pairing instructions carefully (Section 4.4). Ensure only one speaker is put into pairing mode initially.
No sound or low volume	Device volume too low; Speaker volume too low; "Reduce Loud Audio" setting on phone enabled	Increase volume on both device and speaker; Disable "Reduce Loud Audio" setting on your phone for normal speaker volume.
Lights not working	Light mode off; Low battery	Press the 'Light' button to activate; Charge the speaker.

9. SPECIFICATIONS

Specification	Detail
Model Name	BR-F6
Speaker Type	Outdoor
Speaker Maximum Output Power	80 Watts (40W + 40W dual stereo)
Connectivity Technology	Bluetooth 5.4
Bluetooth Range	98.4 Feet
Power Source	Solar & Battery Powered
Charging Time	3 Hours (via adapter)
Playtime	Up to 24 Hours
Water Resistance Level	IPX7 Waterproof
Material	Acrylonitrile Butadiene Styrene (ABS)
Product Dimensions	22"D x 14"W x 13"H
Item Weight	9.47 Kilograms (20.8 pounds)
Color	Granite

10. WARRANTY AND SUPPORT

Your BlitzRock BR-F6 Outdoor Solar-Powered Rock Speakers come with a Limited Warranty. Please refer to the warranty card included in your packaging for specific terms and conditions.

For technical support, troubleshooting assistance, or warranty claims, please contact BlitzRock customer service through the contact information provided in your Quick Start Guide or on the official BlitzRock website.

