

Manuals+

[Q & A](#) | [Deep Search](#) | [Upload](#)

[manuals.plus](#) /

› [BONSEN](#) /
› [BONSEN Heavy Duty Paper Shredder, 24-Sheet Cross-Cut Shredder, 40-Min Continuous Running Time, Commercial Grade Shredder for Office, 9-Gallon Big Basket, 55dB Super Quiet, P-4 High Security \(S3105\) User Manual](#)

BONSEN S3105

BONSEN S3105 Heavy Duty Paper Shredder User Manual

Model: S3105 | Brand: BONSEN

PRODUCT OVERVIEW

The BONSEN S3105 is a heavy-duty cross-cut paper shredder designed for office and home use. It offers high security shredding, a large capacity waste bin, and quiet operation, making it suitable for continuous shredding tasks.



Figure 1: BONSEN S3105 Heavy Duty Paper Shredder.

WHAT'S IN THE BOX

- 1 x BONSEN Paper Shredder S3105
- 1 x User Manual

SETUP

Unpacking and Placement

Carefully remove the shredder from its packaging. Place the shredder on a flat, stable surface. Ensure there is adequate space around the unit for ventilation and easy access to the waste bin. The shredder is equipped with wheels for convenient relocation.

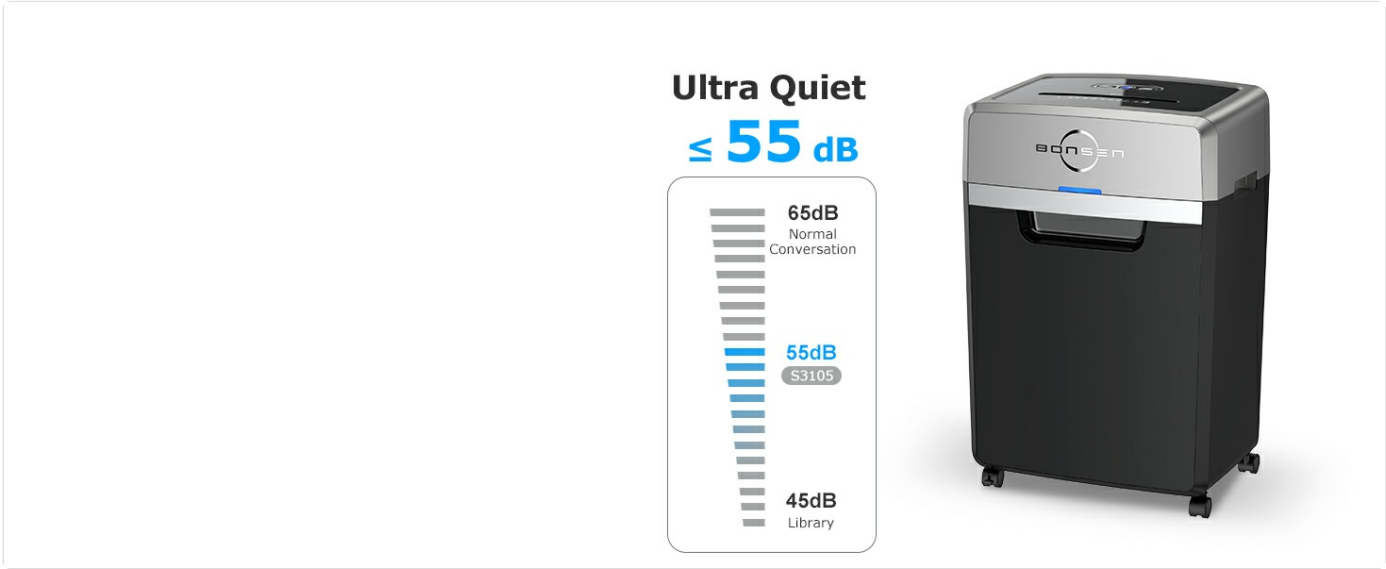


Figure 2: Illustration of shredder assembly and proper placement.

Power Connection

Connect the power cord to a standard electrical outlet. Ensure the power switch on the shredder is in the "OFF" position before plugging it in.

OPERATING INSTRUCTIONS

Control Panel

The shredder features a simple 3-button control panel: Power On, Forward, and Reverse. LED indicators provide status updates for Power On, Overheat, Overload, Bin Open, and Bin Full conditions.

Easy to Operate

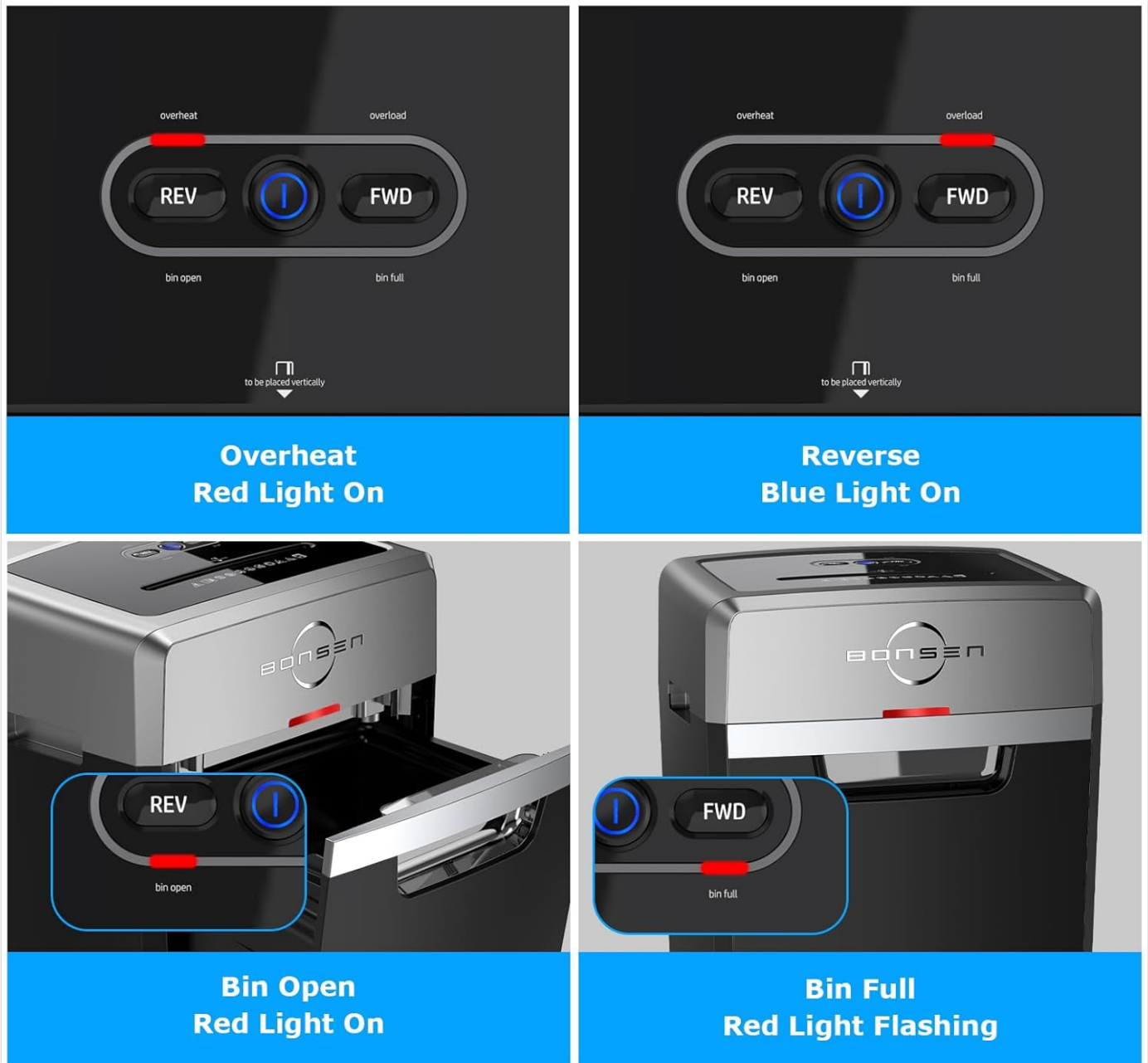


Figure 3: Detailed view of the control panel with LED indicators.

Shredding Documents

The BONSEN S3105 can shred up to 24 sheets of letter-size (20 lb) paper simultaneously. It also handles CDs, staples, paper clips, credit cards, and junk mail. Insert items into the designated shredding slot. The shredder will automatically start when material is detected and stop when shredding is complete.

24 Sheets Powerful Shredding Capacity



Paper



Junk mail



Staples/Clips



CDs



Credit Cards



Figure 4: The shredder's capability to shred paper, junk mail, staples/clips, CDs, and credit cards.

Continuous Operation

This heavy-duty shredder is designed for continuous operation for up to 40 minutes. After this period, a 60-minute cool-down period is recommended to prevent overheating and ensure longevity. During a 40-minute cycle, it can shred approximately 5230 sheets of A4 paper.

40 Minutes Continuous Shredding

Over 5200 sheets of A4 paper can be shredded in 40 minutes



Figure 5: Visual representation of the 40-minute continuous shredding capability.

Security Level

The BONSEN S3105 provides P-4 security level cross-cut shredding, reducing paper into small pieces of $\frac{5}{32} \times 1\text{-}\frac{12}{32}$ inches (4 x 35 mm). This ensures your confidential information is securely destroyed.

Superior Security Level P-4

Makes your confidential information well protected



4mm
35mm

5/32×1-3/8 inches

BONSEN



5mm
50mm

13/64×31/32 inches

Other



Figure 6: Comparison of P-4 security shred size to a dime.

Quiet Operation

Operating at an ultra-low noise level of 55 dB, the shredder minimizes disruption in office or home environments, allowing for quiet and smooth shredding.

55dB Ultra-Quiet Performance

Don't worry about your work being interrupted



Figure 7: Noise level comparison, highlighting the 55dB quiet operation.

Waste Bin Management

The shredder features a large 9-gallon pull-out waste bin, capable of holding up to 650 sheets of shredded paper, reducing the frequency of emptying. The "Bin Full" LED indicator will flash when the bin needs to be emptied.

Large Pull-out Bin for Less Emptying

9 gallons wastebasket can hold 650 sheets of A4 paper



Figure 8: View of the 9-gallon pull-out waste bin.

MAINTENANCE

Lubrication

To maintain optimal performance and extend the lifespan of your shredder, it is recommended to lubricate the shredder blades regularly. Use BONSEN shredder lubricant sheets (Model: LS50) or a suitable shredder oil. Simply insert a lubricant sheet into the shredder as you would a regular piece of paper every few shredding cycles. This helps reduce static dust and improves shredding efficiency.

Cleaning

Periodically clean the exterior of the shredder with a soft, dry cloth. Do not use abrasive cleaners or solvents. Ensure the power is disconnected before cleaning.

TROUBLESHOOTING

Problem	Possible Cause	Solution
---------	----------------	----------

Problem	Possible Cause	Solution
Shredder does not turn on.	No power, power switch off, bin not properly closed.	Check power connection. Ensure power switch is ON. Push waste bin firmly into place.
Overheat (Red Light On).	Continuous operation exceeded duty cycle.	Allow the shredder to cool down for at least 60 minutes. The light will turn off when ready.
Overload (Red Light Flashing).	Too much paper inserted.	Press the "Reverse" button to clear the jam. Reduce the amount of paper for next shredding.
Bin Open (Red Light On).	Waste bin is not fully inserted or is open.	Ensure the waste bin is fully and correctly inserted into the shredder housing.
Bin Full (Red Light Flashing).	Waste bin is full.	Empty the waste bin.







SPECIFICATIONS

- Model:** S3105
- Cut Type:** Cross Cut
- Shred Size:** 5/32 x 1-12/32 inches (4 x 35 mm)
- Security Level:** P-4
- Shredding Capacity:** 24 sheets (20 lb paper)
- Continuous Run Time:** 40 minutes
- Cool Down Time:** 60 minutes
- Waste Bin Capacity:** 9 Gallons (approx. 650 sheets)
- Noise Level:** 55 dB
- Product Dimensions:** 11.61 x 16.69 x 25.39 inches
- Item Weight:** 43.2 pounds
- Color:** Black
- Manufacturer:** BONSEN

WARRANTY AND SUPPORT

BONSEN provides professional customer service for its products. For any inquiries, technical assistance, or warranty claims, please refer to the contact information provided in your product packaging or visit the official BONSEN website. It is recommended to consult the user manual and troubleshooting guide before seeking support.

Related Documents - S3105

 <p>USER'S MANUAL CROSS-CUT PAPER SHREDDER S3102 16 SHEETS</p> <p>THIS INSTRUCTION BOOKLET CONTAINS IMPORTANT SAFETY INFORMATION. PLEASE READ AND KEEP IT FOR FUTURE REFERENCE.</p>	<p>BONSEN S3102 Cross-Cut Paper Shredder User Manual</p> <p>Comprehensive user manual for the BONSEN S3102 16-sheet cross-cut paper shredder. Provides essential safety guidelines, detailed product specifications, step-by-step operating instructions, maintenance advice, troubleshooting tips, and warranty information.</p>
 <p>USER'S MANUAL CROSS-CUT PAPER SHREDDER S3201-W</p> <p>THIS INSTRUCTION BOOKLET CONTAINS IMPORTANT SAFETY INFORMATION. PLEASE READ AND KEEP IT FOR FUTURE REFERENCE.</p>	<p>Bonsen Shredder S3201-W User Manual</p> <p>User manual for the Bonsen Shredder S3201-W, providing operating instructions, product specifications, troubleshooting tips, and safety warnings for this cross-cut paper shredder.</p>
 <p>USER'S MANUAL CROSS-CUT PAPER SHREDDER S3101</p> <p>THIS INSTRUCTION BOOKLET CONTAINS IMPORTANT SAFETY INFORMATION. PLEASE READ AND KEEP IT FOR FUTURE REFERENCE.</p>	<p>BONSEN Shredder S3101 User Manual</p> <p>User manual for the BONSEN Shredder S3101, detailing operating instructions, product specifications, safety warnings, troubleshooting, and maintenance for home and office use.</p>
 <p>USER'S MANUAL CROSS-CUT PAPER SHREDDER S3102 16 SHEETS</p> <p>THIS INSTRUCTION BOOKLET CONTAINS IMPORTANT SAFETY INFORMATION. PLEASE READ AND KEEP IT FOR FUTURE REFERENCE.</p>	<p>BONSEN S3102 Cross-Cut Paper Shredder User Manual</p> <p>User manual for the BONSEN S3102 Cross-Cut Paper Shredder, providing detailed operating instructions, safety guidelines, product specifications, maintenance tips, troubleshooting, and warranty information for efficient and safe paper shredding.</p>
 <p>USER'S MANUAL MICRO CUT 120 SHEETS AUTO SHREDDER AND 12 SHEETS MANUAL SHREDDER S3110</p> <p>THIS INSTRUCTION BOOKLET CONTAINS IMPORTANT SAFETY INFORMATION. PLEASE READ AND KEEP IT FOR FUTURE REFERENCE.</p>	<p>BONSEN S3110 Micro Cut Shredder User Manual</p> <p>User manual for the BONSEN S3110 Micro Cut Auto Shredder and Manual Shredder. Provides operating instructions, safety information, product specifications, maintenance, and troubleshooting for efficient document destruction.</p>
 <p>USER'S MANUAL CROSS-CUT PAPER SHREDDER S3102 16 SHEETS</p> <p>THIS INSTRUCTION BOOKLET CONTAINS IMPORTANT SAFETY INFORMATION. PLEASE READ AND KEEP IT FOR FUTURE REFERENCE.</p>	<p>Bonsen S3102 Cross-Cut Paper Shredder User Manual</p> <p>User manual for the Bonsen S3102 cross-cut paper shredder, providing detailed instructions on operation, safety precautions, product specifications, maintenance, troubleshooting, and warranty information.</p>