

## Manuals+

[Q & A](#) | [Deep Search](#) | [Upload](#)

manuals.plus /

- › **POWERTEC** /
- › **POWERTEC 2PK Framing Square, 16 x 24 Inch Steel Carpenter Square with Rafter Tables, Framing Tools & Right Angle Ruler for Carpenter, Woodworking, Construction (80008-P2) (Pack of 2) 16" x 24" Framing Square, 4pk**

### POWERTEC 80008-P2

# POWERTEC 2PK Framing Square Instruction Manual

Model: 80008-P2

## 1. INTRODUCTION

The POWERTEC 2PK Framing Square is a versatile and essential tool for carpenters, woodworkers, and construction professionals. Designed for precision and durability, this L-shaped steel square assists in creating accurate square and true dimensions for various applications, including framing, rafter layout, and stair construction. This manual provides detailed instructions on the proper use, care, and maintenance of your framing square to ensure optimal performance and longevity.

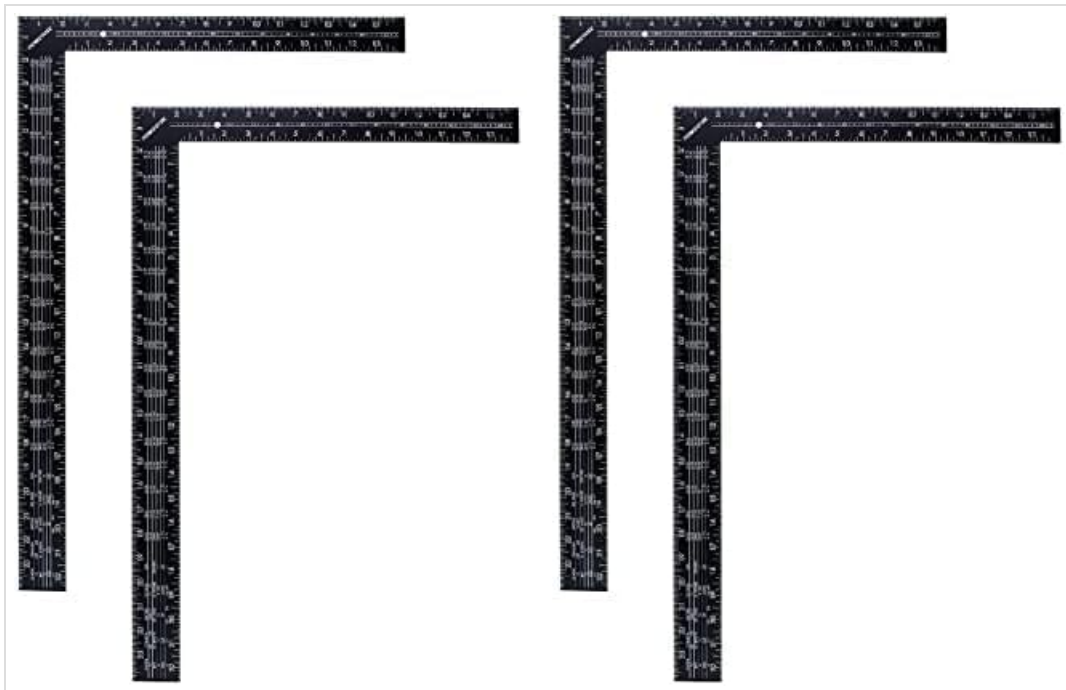


Image 1.1: Two POWERTEC 16 x 24 Inch Framing Squares. These L-shaped tools are made of steel and feature clear markings for various measurements.

## 2. PRODUCT FEATURES

- **Durable Construction:** Made from robust steel for long-lasting performance and resistance to wear.
- **Optimal Visibility:** Features clearly stamped graduated scales for easy reading.

- **Multiple Scales:** Includes 1/8, 1/10, 1/12, and 1/16 inch scales on both front and back sides.
- **Integrated Rafter Tables:** Convenient rafter conversion tables are etched directly onto the square for quick calculations.
- **Versatile Application:** Can be used as a straight edge, for establishing right angles, and marking cut-off work on wide stock.
- **Dimensions:** Body measures 24 inches long and 2 inches wide; Tongue measures 16 inches long and 1-1/2 inches wide; 1/16 inch thick.

### 3. SPECIFICATIONS

Manufacturer	POWERTEC
Part Number	80008-P2
Item Weight	4.69 pounds (for the pack of 2)
Product Dimensions	24.2 x 16.25 x 0.4 inches
Item Model Number	80008-P2
Size	Pack of 2
Color	Black
Style	16" x 24" Framing Square
Material	Alloy Steel

### 4. SETUP AND UNDERSTANDING YOUR FRAMING SQUARE

Your POWERTEC Framing Square comes ready for immediate use. No assembly is required. Familiarize yourself with the various markings and tables on the square before beginning your work.

#### 4.1. Understanding the Scales

The square features multiple graduated scales (1/8, 1/10, 1/12, and 1/16 inch) along its edges. These scales allow for precise measurements and markings depending on your project requirements. The larger arm (body) is typically 24 inches long, and the shorter arm (tongue) is 16 inches long.

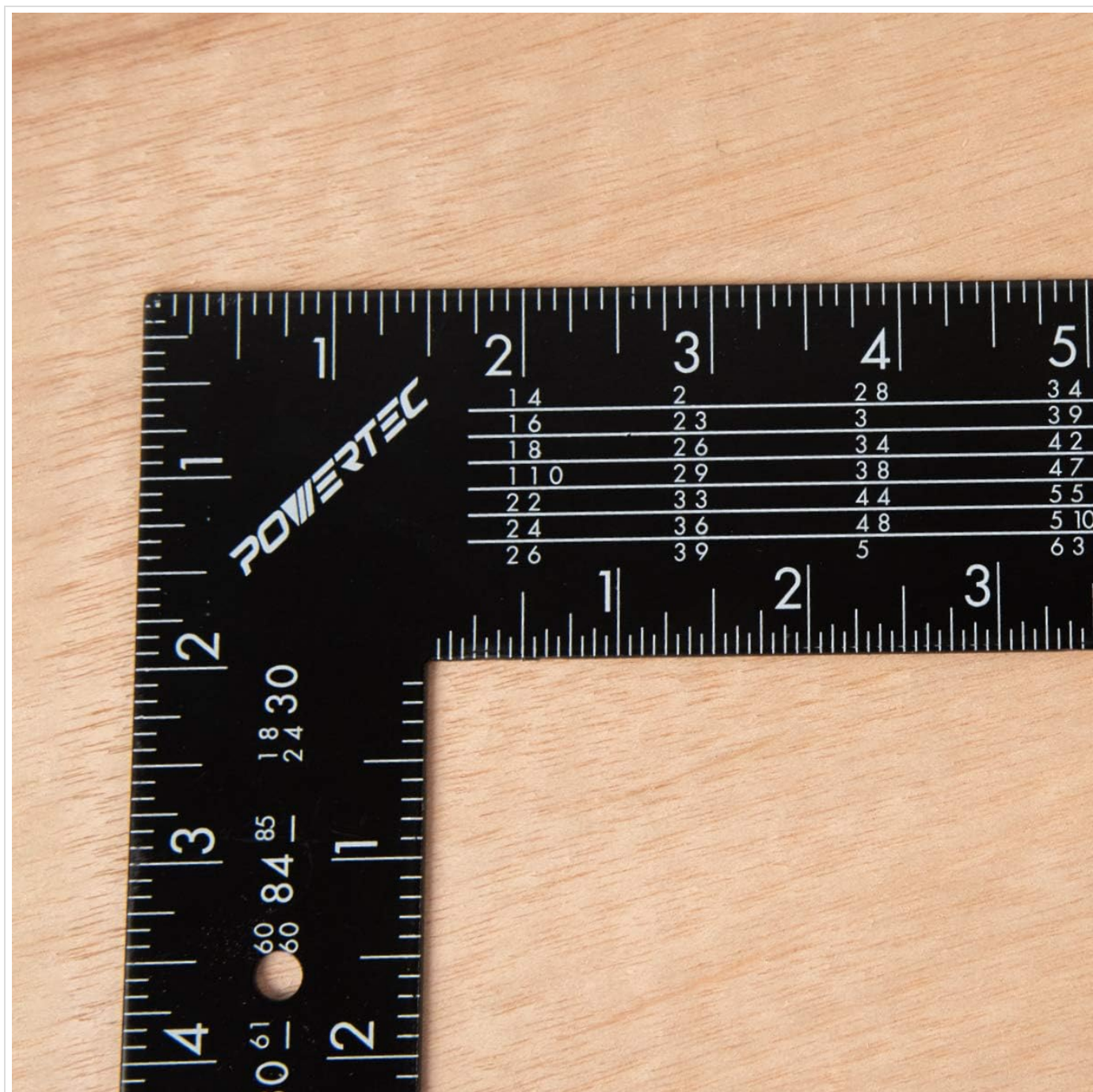


Image 4.1: Close-up view of the POWERTEC framing square, showing the clear inch and fractional markings along its edges.

## 4.2. Rafter Tables

One of the key features of this framing square is the integrated rafter tables. These tables provide quick reference for calculating common, hip, and valley rafter lengths, as well as jack rafter differences, based on the pitch of the roof. Understanding how to read these tables is essential for accurate roof framing.





Image 4.2: Detailed view of the rafter tables etched onto the framing square, providing quick reference for roof framing calculations.

## 5. OPERATING INSTRUCTIONS

### 5.1. Squaring and Marking

To ensure a perfect 90-degree angle, place the inside corner of the framing square firmly against the edge of your material. Align one arm along the edge and use the other arm to draw a perpendicular line. This method is fundamental for cutting and assembling square components.



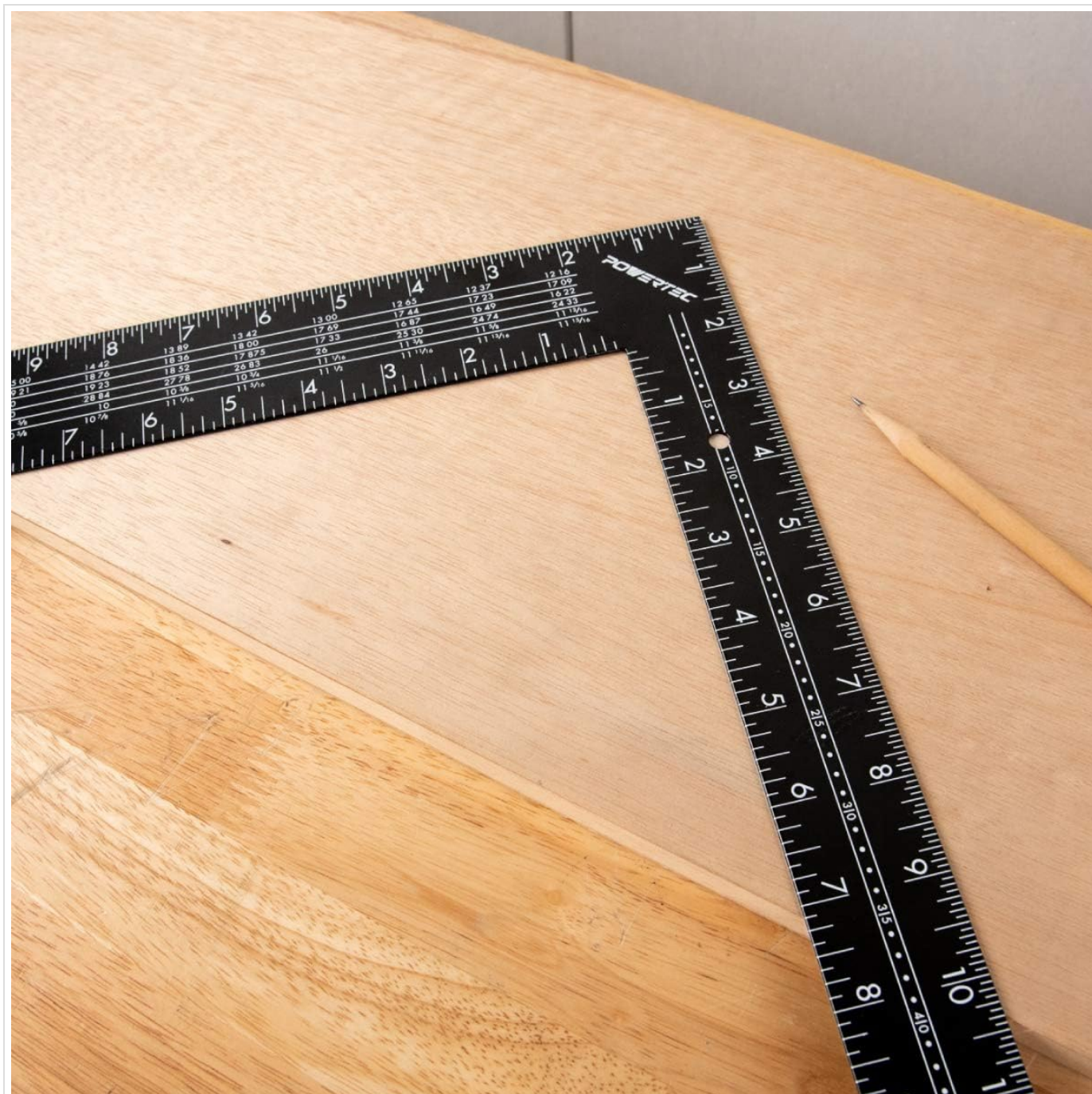


Image 5.1: A user demonstrating how to use the framing square to accurately mark a piece of wood for a precise cut.

## 5.2. Using Rafter Tables for Layout

The rafter tables simplify complex roof framing. To use them, identify the desired roof pitch (e.g., 6-in-12, 8-in-12). Locate the corresponding column on the rafter table. The numbers in that column will provide the length per foot of run for common, hip, and valley rafters, as well as the difference in length for jack rafters. Apply these measurements to your material for accurate cuts.

## 5.3. As a Straight Edge

The long, straight edges of the framing square can also be used as a reliable straight edge for drawing long lines or checking the flatness of a surface.

## 6. CARE AND MAINTENANCE

To maintain the accuracy and longevity of your POWERTEC Framing Square, follow these simple care instructions:

- **Cleaning:** Wipe the square clean with a dry cloth after each use to remove dust, sawdust, or any marking residue. For stubborn grime, use a mild cleaner and dry thoroughly.
- **Storage:** Store the framing square in a dry environment to prevent rust. Hang it or lay it flat to prevent bending or warping, which could affect its accuracy.
- **Avoid Damage:** Do not drop the square or use it as a hammer, as this can bend the tool and compromise its precision.

## 7. TROUBLESHOOTING

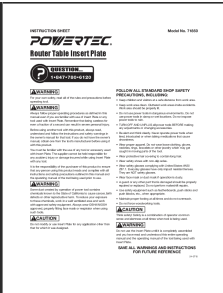
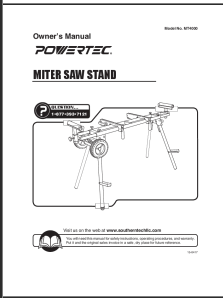
Most issues with a framing square relate to its physical condition or user error. Here are some common points to check:



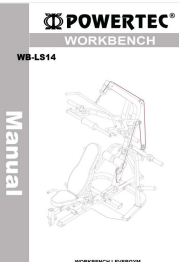

- **Inaccurate Measurements:** If your measurements are inconsistent, first check the square for any signs of bending or damage. Even a slight bend can lead to significant errors. Ensure the square is clean and free of debris that might interfere with proper contact with the material.
- **Difficulty Reading Scales:** Ensure you are in a well-lit area. If the markings appear faded, clean the surface thoroughly.
- **Rafter Table Miscalculations:** Double-check that you are using the correct roof pitch column and reading the values accurately. Refer to external resources or a carpentry guide if you are unsure about rafter table usage.

## 8. WARRANTY AND SUPPORT

For information regarding product warranty, returns, or technical support, please refer to the original product packaging or visit the official POWERTEC website. Contact details for customer service are typically provided on the manufacturer's website or within your purchase documentation.

### Related Documents - 80008-P2

	<p><a href="#">POWERTEC 71850 Router Table Insert Plate - Instructions and Safety</a></p> <p>Comprehensive instruction sheet for the POWERTEC 71850 Router Table Insert Plate, covering safety precautions, unpacking, parts list, installation, usage, and maintenance. Includes compatibility chart for various router models.</p>
	<p><a href="#">POWERTEC MT4000 Miter Saw Stand Owner's Manual</a></p> <p>Comprehensive owner's manual for the POWERTEC MT4000 Miter Saw Stand, covering safety, assembly, operation, maintenance, and warranty information.</p>

	<p><a href="#">Powertec PT3200i 3000W Digital Inverter Generator Operating Instructions</a></p> <p>Operating instructions for the Powertec PT3200i 3000W Digital Inverter Generator, covering safety, features, operation, maintenance, and troubleshooting.</p>
	<p><a href="#">POWERTEC PTi4500 4500W Digital Inverter Generator: Operating Instructions</a></p> <p>Comprehensive operating instructions and safety guide for the POWERTEC PTi4500 4500W Digital Inverter Generator, covering specifications, intended use, safety precautions, maintenance, troubleshooting, and warranty information.</p>
	<p><a href="#">Powertec Workbench Levergym WB-LS14 Assembly Manual - Step-by-Step Guide</a></p> <p>Comprehensive assembly manual for the Powertec Workbench Levergym WB-LS14. Includes parts list, detailed step-by-step instructions, safety precautions, and maintenance tips.</p>
	<p><a href="#">POWERTEC PT3300Ei 3300W Digital Inverter Generator Operating Instructions</a></p> <p>Comprehensive operating instructions for the POWERTEC PT3300Ei 3300W Digital Inverter Generator. Learn about safety rules, assembly, operation, maintenance, troubleshooting, and specifications.</p>