

BLUETTI Elite 200 V2

BLUETTI Elite 200 V2 Portable Power Station & Charger 1 Instruction Manual

Model: Elite 200 V2

1. INTRODUCTION & OVERVIEW

The BLUETTI Elite 200 V2 Portable Power Station, bundled with Charger 1, offers a robust and reliable power solution for various needs, from outdoor adventures to home emergency backup. With a substantial 2073.6Wh capacity and a powerful 2600W (5200W peak) AC output, it can energize up to 9 devices simultaneously. This unit features automotive-grade LFP batteries designed for an extended 17-year lifespan with over 6000+ cycles, ensuring long-term durability and safe operation across diverse temperatures. Charger 1 significantly enhances charging speed, providing up to 560W input for a 6X faster charge than traditional car chargers, fully charging the power station in approximately 4.2 hours via car. The upgraded app provides intuitive control and real-time power insights for efficient energy management. The Elite 200 V2 is engineered for minimal power consumption and offers an Uninterruptible Power Supply (UPS) mode with a switching time of less than 15ms for seamless power transitions.

6X* Faster Charging

Max. 560W Input

BLUETTI Charger 1 (560W)

0-100%



4.2 Hrs

Traditional Car Charging (96W)

0-17%



4.2 Hrs



* Compared to traditional car cigarette lighter charging < 100W.

Figure 1: BLUETTI Elite 200 V2 Portable Power Station with multiple output ports.



Figure 2: The Elite 200 V2 provides 2073.6Wh capacity and 2600W output, capable of powering various devices for extended periods.

2. SETUP & INSTALLATION

The BLUETTI Elite 200 V2 and Charger 1 are designed for straightforward installation. Follow these steps to set up your system:

2.1 Unboxing and Component Check

Upon receiving your product, ensure all components are present and undamaged. The package includes:

- BLUETTI Elite 200 V2 portable power station
- Charger 1 (DC-DC charger)
- 6AWG DC input cable
- Installation accessories
- AC charging cable
- Solar charging cable
- Grounding screw
- User manual



3900W Lifting Power

Power work, life, and beyond.

Effortlessly meet your daily power needs and easily power pure resistive loads like kettles, electric blankets, and hair dryers.

Rated Power: 2600W

Power Lifting Mode: 3900W*

* This mode is only for pure resistive loads.

Figure 3: Ensure all components, including the 6AWG DC input cable and solar charging cable, are ready for installation.

2.2 Connecting Charger 1

Charger 1 facilitates rapid charging from your vehicle's alternator. It is compatible with various BLUETTI power stations and 95% of third-party power stations.

1. Switch off the circuit breaker on the 6AWG DC input cable.
2. Connect the 6AWG input cable and the MC4 output cable to the Charger 1.
3. Connect the output cable to your power station via a solar charging cable.

1 kWh Size, Double the Capacity

Perfect for road trips and home backup, our compact battery offers more power in less space, making it easy to carry.



Figure 4: Connect the 6AWG input cable and MC4 output cable to Charger 1, then connect to the power station.

2.3 Connecting to Car Battery

Charger 1 is designed to intelligently monitor your alternator status and prevent your car battery from draining.

1. Run the input cable through your car to the car battery.
2. Attach the cable to the car battery terminals: red to the positive, black to the negative.

Minimal Power Consumption

Enhanced Inverter Efficiency:

Revolutionary LFP cells reduce energy loss during conversion, maximizing power output.

Ultra-Low Standby Consumption:

Standby power consumption as low as 10W ensures prolonged run time.



Figure 5: Connect the Charger 1 input cable directly to your vehicle's battery terminals.

2.4 Starting the Charge

1. Switch on the circuit breaker. Set the proper voltage before turning on the Charger 1 on the BLUETTI app.
2. Find a place to secure the Charger 1 properly.

Uninterrupted Power Supply

Enjoy seamless transitions, making us your top choice for uninterrupted power.

< 15ms Switching Time

Industry Standard: 30ms



Figure 6: Activate the circuit breaker and set voltage via the app to begin charging.

Video 1: Demonstrates the BLUETTI Charger 1 in action, highlighting its fast charging capabilities and ease of use for on-the-go power.

3. OPERATING INSTRUCTIONS

3.1 Charging the Power Station

The Elite 200 V2 offers multiple charging options:

- **AC Charging:** 0-80% in 1 hour (1800W input).
- **Car Socket Charging:** 12V/24V, 8A.
- **Solar Charging:** 0-80% in 2.4 hours (1000W input).
- **Dual Charging:** 0-80% in 50 minutes (2400W input).

Step-by-Step Guidance

Step 1

Step 2

Step 3

Step 4

6AWG DC Input Cable

MC4 Output Cable

DC/PV Solar Charging Cable

Connect to Charger 1

1. Switch off the circuit breaker on the 6AWG DC input cable.
2. Connect the 6AWG input cable and the MC4 output cable to the Charger 1.
3. Connect the output cable to your power station via a solar charging cable.

Figure 7: Overview of AC, Car Socket, and Solar Charging methods for the Elite 200 V2.

3.2 Powering Your Devices

The Elite 200 V2 is equipped with a variety of output ports to power all your devices:

- 1 x Car Port (120W)
- 2 x USB-C (100W)

- 2 x USB-A (15W)
- 4 x AC Outputs (2600W)



Figure 8: Detailed view of all available output ports on the BLUETTI Elite 200 V2.

3.3 Usage Scenarios

The power station is versatile for various applications:

- **Outdoor Camping:** Power phones (63.5 times), drones (21.8 times), mini-fridges (26.4 hours), and ice makers (2.6 hours).
- **Off-Grid Living:** Run lights (79.3 hours), projectors (7.6 hours), coffee makers (1.6 hours), and hair dryers (1.2 hours).
- **Home Backup:** Keep Wi-Fi routers (72.1 hours), refrigerators (14.4 hours), dishwashers (1 hour), and ovens (0.7 hours) operational during outages.



Figure 9: The Elite 200 V2 provides ample power for essential devices during outdoor camping.

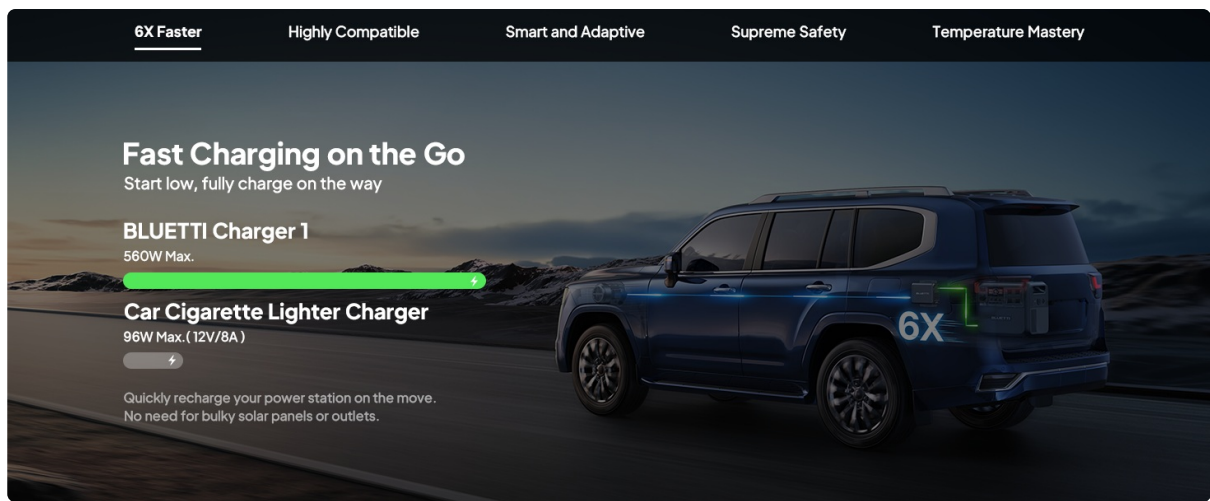


Figure 10: Enjoy home-like comforts in the wild with the Elite 200 V2.



Figure 11: The Elite 200 V2 ensures your essential home appliances remain powered during outages.

3.4 App Control & UPS Mode

The upgraded BLUETTI app allows for intuitive control and real-time power insights, including energy usage patterns and savings. The UPS mode provides an uninterrupted power supply with a switching time of less than 15ms, ensuring seamless transitions during power fluctuations.

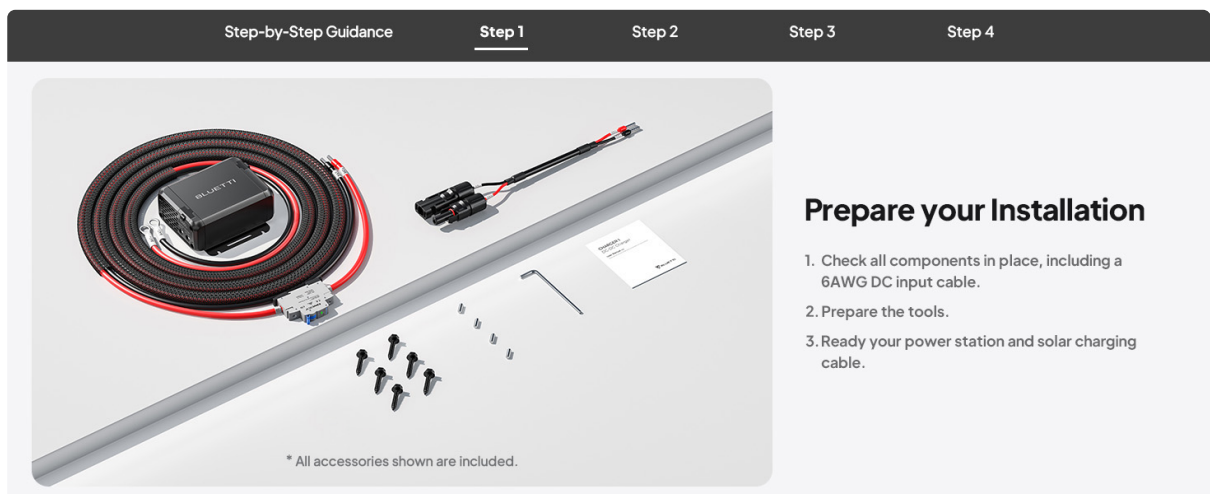


Figure 12: The BLUETTI app provides real-time status, energy statistics, and working mode controls.



Easily Install in 4 Steps

Check the Compatibility Table
Install Your BLUETTI Charger 1 With Ease.

Figure 13: The UPS mode ensures uninterrupted power supply with a fast switching time.

Video 2: An overview of the BLUETTI Portable Power Station Elite 200 V2, showcasing its features and applications.

4. MAINTENANCE

To ensure the longevity and optimal performance of your BLUETTI Elite 200 V2, regular maintenance is recommended.

- **Battery Lifespan:** The automotive-grade LFP batteries are designed for 6000+ cycles, providing a 12x longer lifespan than the industry average. This translates to approximately 17 years of use before capacity reduces to 80%.
- **Storage:** Store the unit in a cool, dry place away from direct sunlight and extreme temperatures.
- **Charging Cycles:** For optimal battery health, avoid consistently discharging the battery to 0% or charging to 100% if not immediately needed. Refer to the user manual for recommended charging and discharging practices.
- **Cleaning:** Keep the unit clean and free from dust. Use a dry, soft cloth for cleaning. Ensure ventilation ports are unobstructed.



Figure 14: The Elite 200 V2 features automotive-grade LiFePO4 batteries with 6000+ cycles for extended durability.

5. TROUBLESHOOTING

If you encounter any issues with your BLUETTI Elite 200 V2, consider the following:


- **No Power Output:** Ensure the AC/DC output buttons are activated. Check the battery level on the

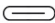
display or app. Verify that the connected devices are within the power station's wattage limits.

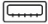
- **Charging Issues:** Confirm that the charging cable is securely connected. For solar charging, ensure panels are in direct sunlight and correctly oriented. Check the input wattage displayed on the screen or app.
- **App Connectivity:** Ensure your power station's Wi-Fi or Bluetooth is enabled and your mobile device is within range. Restart the app and the power station if connection issues persist.
- **Overload Protection:** If the unit shuts down due to overload, disconnect some devices and restart the power station. The 3900W Lifting Power mode is designed for pure resistive loads.
- **Temperature Protection:** The built-in fan actively cools the unit. If the unit overheats, it may temporarily stop charging or discharging. Allow it to cool down in a well-ventilated area.



Power All Your Devices


1 × Car Port
(120W)
①


2 × USB-C
(100W)
②


2 × USB-A
(15W)
③



4 × AC Outputs
(2600W)
④

Figure 15: The Elite 200 V2 features comprehensive protection mechanisms including automatic alternator detection, adjustable voltage, and a built-in fan.

6. SPECIFICATIONS

Feature	Specification
Brand	BLUETTI
Model Name	Elite 200 V2
Capacity	2073.6Wh
AC Output	2600W (5200W Peak)
Battery Type	LFP (LiFePO4)
Lifespan	6000+ Cycles to 80% capacity
Car Charging Input (Charger 1)	Max 560W
AC Charging Input	1800W
Solar Charging Input	1000W
UPS Switching Time	<15ms

Item Weight	53.4 Pounds
Product Dimensions	13.8"L x 9.8"W x 12.7"H
Total Power Outlets	4 AC Outlets + USB-A + USB-C + Car Port

7. WARRANTY & SUPPORT

BLUETTI is committed to providing excellent customer service and product support.

- **Included Components:** The package includes the BLUETTI Elite 200 V2 portable power station, Charger 1 (DC-DC charger) with 6AWG DC input cable, installation accessories, AC charging cable, solar charging cable, grounding screw, and user manual.
- **Protection Plans:** Additional protection plans are available, including a 4-Year Protection Plan and Complete Protect options.
- **After-Sale Service:** BLUETTI offers widespread sales and after-service networks. Feel free to contact customer support for any questions or assistance.



Figure 16: BLUETTI provides comprehensive after-sale service and support.

Video 3: Highlights the features and benefits of the BLUETTI Charger 1, a 560W alternator charger for power stations.