

GuliKit SD05

GuliKit Hall Effect Joystick Module for Steam Deck OLED


Instruction Manual - Model SD05

1. INTRODUCTION

This manual provides detailed instructions for the installation, operation, and maintenance of the GuliKit Hall Effect Joystick Module (Model SD05) designed specifically for the Steam Deck OLED. This module offers an enhanced gaming experience with improved precision and durability.

2. COMPATIBILITY

This GuliKit Hall Effect Joystick Module is engineered exclusively for the **Steam Deck OLED**. It is **not compatible** with the Steam Deck LCD model. Please verify your Steam Deck model before proceeding with installation.



This Joystick Module Is Used For Repair Replacement On Steam Deck OLED (Not for Steam Deck LCD)

Image: GuliKit Hall Effect Joystick Module next to a Steam Deck OLED, indicating compatibility for OLED models only.

3. KEY FEATURES

- **Hall Effect Technology:** Provides enhanced anti-drift capabilities, smoother operation, and a significantly extended lifespan compared to traditional joysticks.
- **Original Touch Sensing:** Maintains the Steam Deck OLED's original touch functionality with included installation caps.
- **No Soldering Required:** Designed for direct replacement, eliminating the need for soldering or specialized tools.
- **One-Button Calibration:** Simplifies the calibration process for optimal performance.
- **Reduced Dead Zone:** Allows for precise input and minimizes controller dead zones, reducing stick drift and improving responsiveness.

The Joystick Cap Has Touch Sensing Functionality



Image: Close-up of a joystick cap highlighting its touch-sensing functionality.

Drop In And Play No Soldering Needed

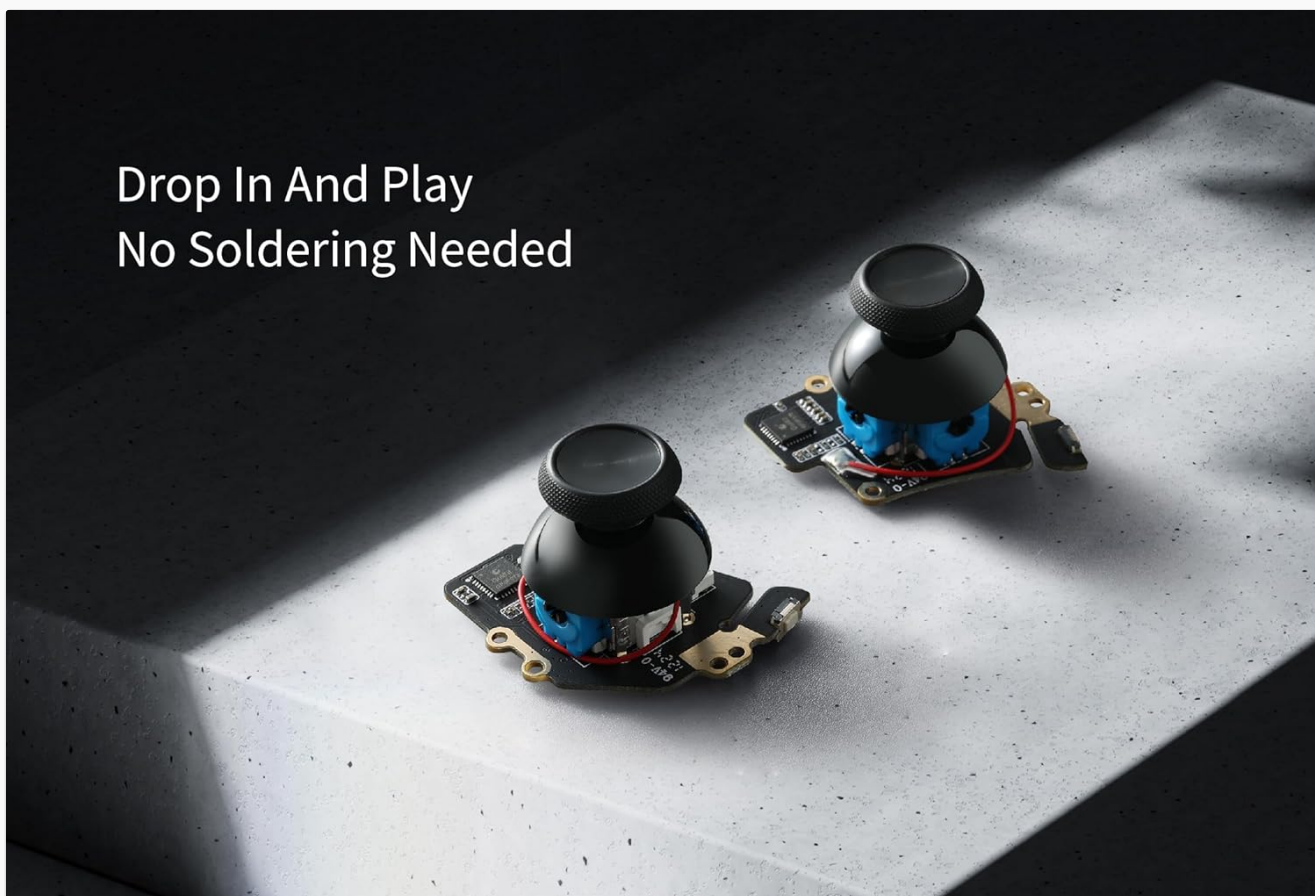


Image: Two GuliKit Hall Effect Joystick Modules, emphasizing their drop-in, no-soldering installation.

4. INSTALLATION GUIDE

Follow these steps carefully to install your GuliKit Hall Effect Joystick Module. A small Phillips head screwdriver and a plastic prying tool (spudger) are recommended.

1. Step 1: Turn Off Steam Deck OLED

Ensure your Steam Deck OLED is completely powered off before beginning the installation process.

Step 03

Remove The Joystick Module Cable



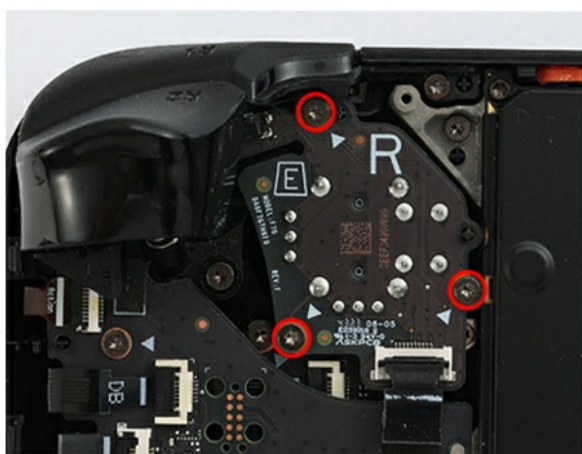
Image: Hand pressing the power button on a Steam Deck OLED to turn it off.

2. Step 2: Open the Back Cover

Carefully use a prying tool to open the back cover of your Steam Deck OLED. Refer to online guides or videos for the precise locations of clips and screws if you are unsure.

Step 04

Remove the screws on the Originals



Step 05

a. Install GuliKit Joystick Module b. Plug The Cable Into The Zif Connector And Lock



Image: A prying tool being used to carefully open the back cover of the Steam Deck OLED.

3. Step 3: Remove the Joystick Module Cable

Locate the existing joystick module and carefully disconnect its ribbon cable from the ZIF connector on the mainboard. Use tweezers or a plastic tool to gently lift the connector's locking tab before pulling out the cable.

Step 06

Joystick Calibration

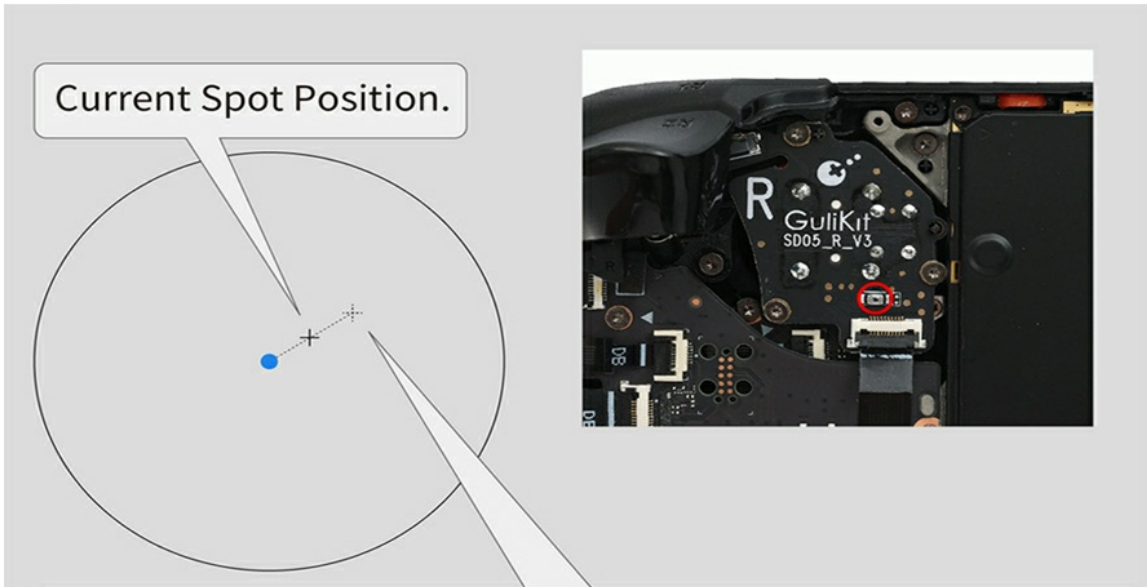


Image: Tweezers being used to disconnect the ribbon cable from the joystick module on the Steam Deck's internal board.

4. Step 4: Remove the Original Joysticks

Unscrew the retaining screws that secure the original joystick modules to the Steam Deck's internal frame. Once unscrewed, carefully remove the old joystick modules.

Step 01

Turn Off Steam Deck OLED



Step 02

Open the Back Cover



Image: Screws being removed from the original joystick module on the Steam Deck's internal board.

5. Step 5: Install GuliKit Joystick Module

Place the new GuliKit Hall Effect Joystick Module into position. Plug its ribbon cable securely into the ZIF connector on the mainboard and lock the tab. Then, secure the module with the retaining screws.

Drop In And Play
No Soldering Needed



Image: The GuliKit joystick module being installed and its ribbon cable connected to the ZIF connector.

5. OPERATING AND CALIBRATION

After installation, it is crucial to calibrate the joysticks for optimal performance.

5.1. One-Button Calibration

Perform this calibration before securing the back cover of your Steam Deck OLED.

1. Move the joystick to the symmetrical position of the central point (e.g., push it fully in one direction, then release).
2. Press the tiny calibration button located on the joystick module's board.
3. Release the joystick.
4. Calibration is successfully completed when you observe the joystick return to the center position.



Image: Diagram showing the joystick's current spot position and the location of the tiny calibration button on the module board.

5.2. Reducing the Dead Zone

The Hall Effect joysticks are designed to minimize controller dead zones. You can further fine-tune settings within your Steam Deck's operating system to potentially achieve a zero dead zone, allowing for more responsive input and reducing issues like stick drift.

6. MAINTENANCE

To ensure the longevity and optimal performance of your GuliKit Hall Effect Joystick Module:

- Keep the joystick area clean and free from dust and debris.
- Ensure the stick caps are securely pressed down, as they can sometimes become loose during shipping or handling.
- Avoid excessive force or impact on the joysticks.

7. TROUBLESHOOTING

If you encounter any issues with your GuliKit Hall Effect Joystick Module, consider the following:

- **Joystick Not Centering:** It is normal for the joystick not to return to the absolute center each time when operating in a 'no dead zone' mode. This is a characteristic of highly sensitive joysticks designed for minimal dead zones.
- **Stuck Joystick Cap:** If a stick cap feels loose or stuck, gently press it vertically downwards to reseal it properly.
- **Calibration Issues:** If the joystick behavior is erratic after installation, repeat the one-button calibration process (Section 5.1). Ensure the joystick is moved to its symmetrical position and released before pressing the calibration button.
- **General Performance:** If issues persist after calibration and checking physical connections, ensure all ribbon

cables are fully seated and locked in their connectors.

8. SPECIFICATIONS

Feature	Detail
Compatible Devices	Steam Deck OLED
Controller Type	Gamepad (Joystick Module)
Connectivity Technology	Modular plug and play
Additional Features	Anti-drift Hall effect magnetic joystick
Button Quantity	2 (for joystick modules)
Hardware Platform	Gaming Console
Power Source	Battery Powered (from Steam Deck)
Package Quantity	1
Item Dimensions	1.6 x 0.8 x 1.2 inches
Brand Name	GuliKit
Model Name	SD05
Manufacturer	GuliKit
Color	Black

9. WARRANTY AND SUPPORT

The GuliKit Hall Effect Joystick Module comes with a **1-year warranty**. For any technical assistance, troubleshooting beyond this manual, or warranty claims, please contact GuliKit customer support through their official channels or the retailer where the product was purchased. Please have your proof of purchase and product model (SD05) ready.