

## GODIYMODULES RM

# GODIYMODULES RM 2-Way Crossover Instruction Manual

Model: RM | Brand: GODIYMODULES

## INTRODUCTION

This manual provides detailed instructions for the installation, operation, and maintenance of your GODIYMODULES RM 2-Way Crossover. This device is designed to separate audio signals into high and low frequencies, optimizing sound distribution to your speakers for improved audio clarity and performance in both home and car audio systems.

## PRODUCT OVERVIEW

The GODIYMODULES RM 2-Way Crossover is a passive audio filter that enhances sound quality by directing specific frequency ranges to appropriate speaker drivers. Key features include:

- **Precise Frequency Distribution:** Ensures accurate separation of high and low frequencies for optimal sound.
- **Adjustable Settings:** Features four-speed adjustable high and low-frequency settings to fine-tune audio output.
- **Enhanced Audio Performance:** Delivers pure treble and strong, powerful bass.
- **Versatile Application:** Suitable for both home audio setups and car audio systems.

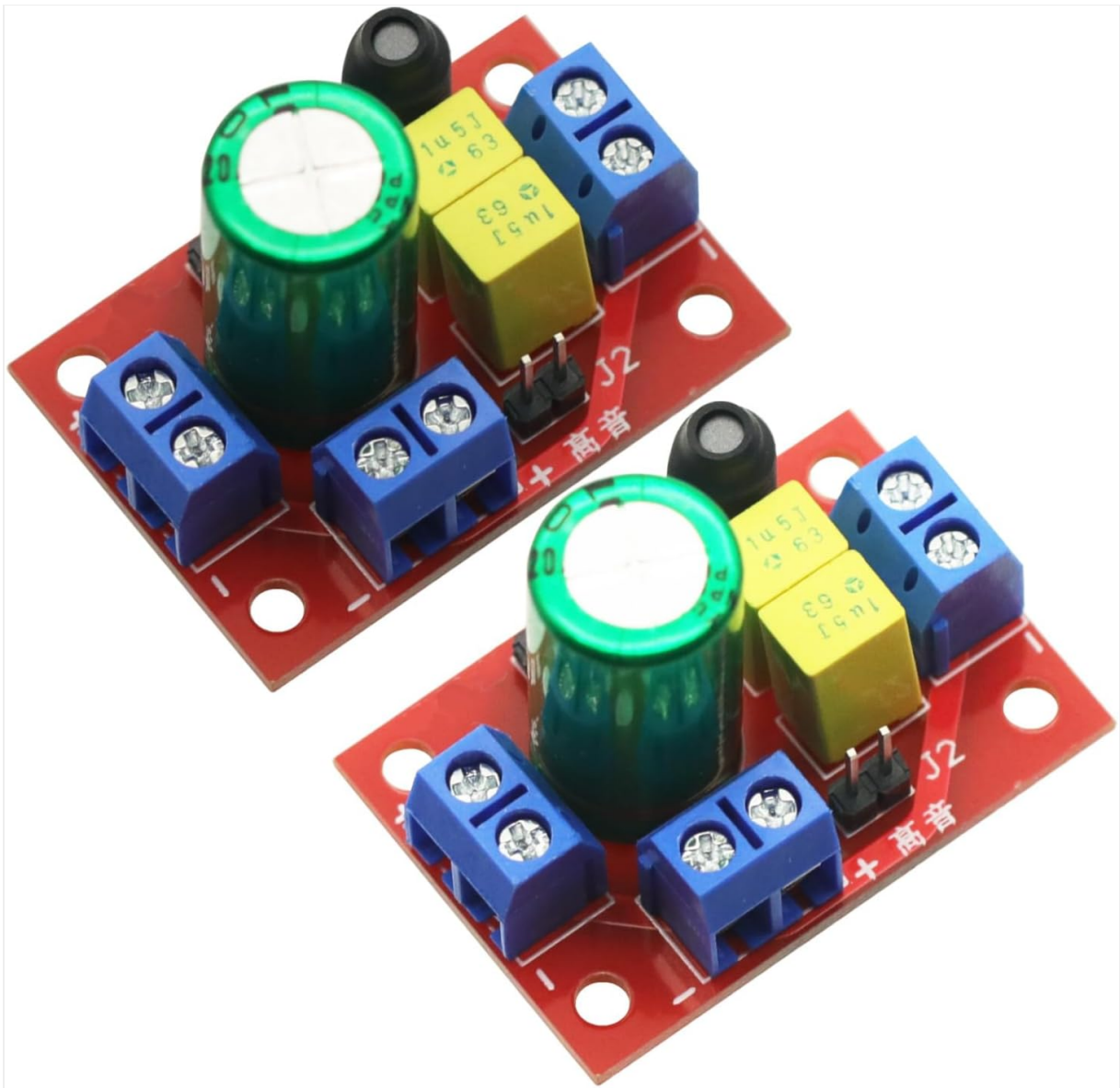


Image: Two GODIYMODULES RM 2-Way Crossover units, showing their compact design and connection terminals.

## SETUP AND INSTALLATION

Proper installation is essential for optimal performance. Follow these steps to connect your 2-Way Crossover:

1. **Identify Terminals:** Each crossover unit has clearly marked input and output terminals. Look for "IN" (Input), " " (Treble/Tweeter), and " " (Bass/Woofer).
2. **Connect Audio Source:** Connect the audio output from your amplifier or head unit to the "IN" terminals on the crossover. Ensure correct polarity (+ to + and - to -).
3. **Connect Tweeter:** Connect your tweeter speaker to the terminals marked " ".
4. **Connect Woofer:** Connect your woofer speaker to the terminals marked " ".
5. **Adjust Frequency Settings:** The crossover features adjustable settings for high and low frequencies. These adjustments are typically made via jumpers or switches on the board. Refer to the circuit diagram for specific adjustment points (J1, J2).

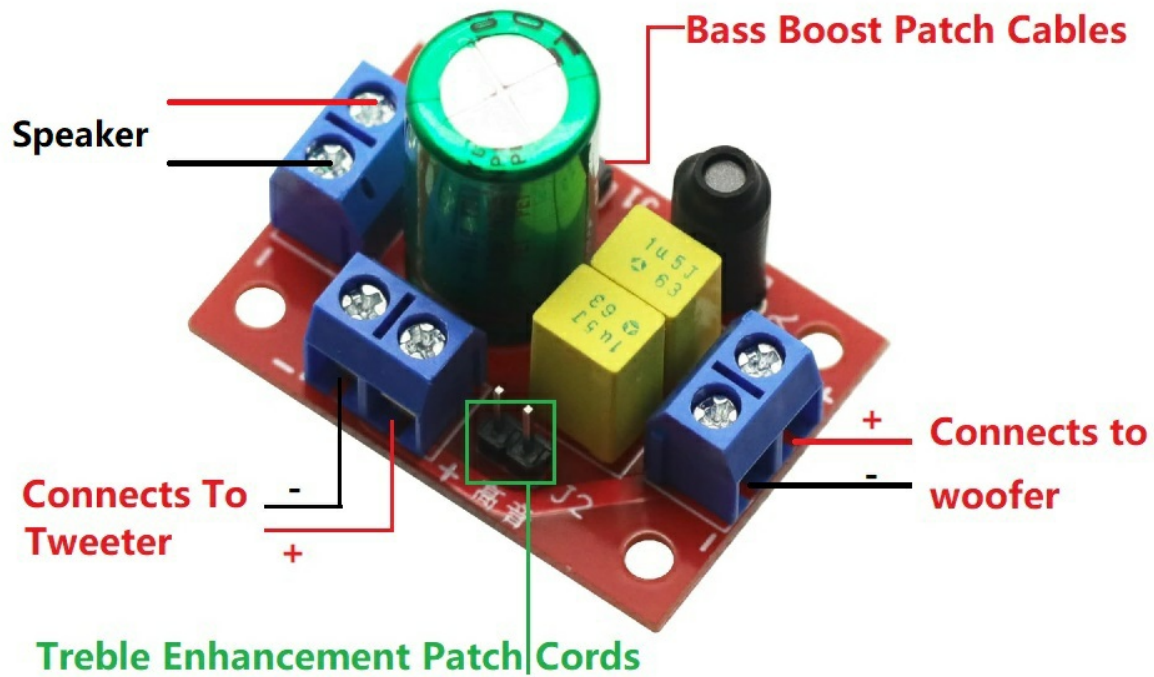


Image: Connection diagram for the GODIYMODULES RM 2-Way Crossover. It illustrates where to connect the speaker input, tweeter, and woofer, along with locations for bass boost and treble enhancement patch cables.

**Important:** Always ensure your audio system is powered off before making any connections to prevent damage to the crossover or your speakers.

## OPERATING INSTRUCTIONS

The GODIYMODULES RM 2-Way Crossover is a passive component and does not require active power. Its primary operation involves signal filtering. The "four-speed adjustable high and low" feature refers to the ability to modify the crossover points for treble and bass frequencies. This is typically achieved by adjusting jumpers or small switches on the circuit board (e.g., J1 and J2 as indicated in diagrams).

- **Frequency Adjustment:** Experiment with the jumper settings to find the optimal balance between your tweeters and woofers. Different settings will shift the crossover frequency, affecting which frequencies are sent to each speaker.
- **Listening Test:** After each adjustment, listen to your audio system to evaluate the sound quality. Adjust until the sound is clear, balanced, and free from distortion.
- **Bass Boost/Treble Enhancement:** If available, utilize the designated patch cable points (as shown in the connection diagram) to further fine-tune bass or treble response.

**L is the bass inductor, the inductance can be adjusted as needed, default is 4,7uh.**

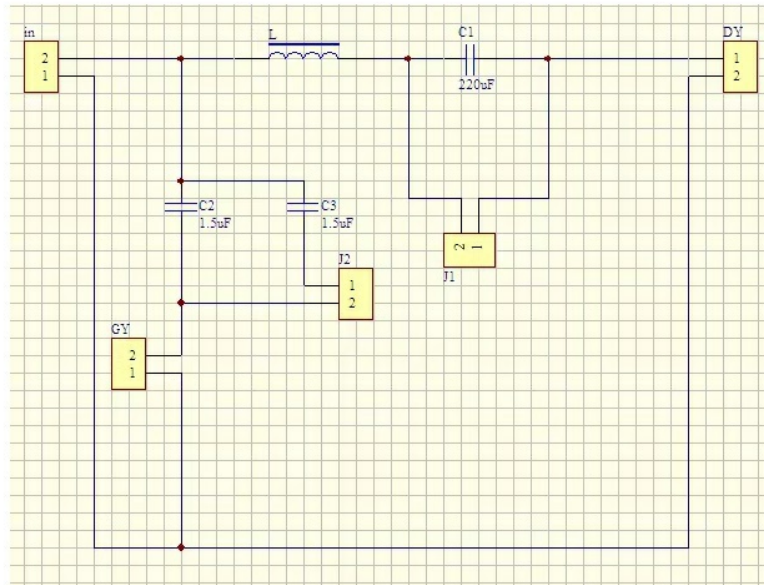


Image: Circuit diagram of the crossover. This diagram illustrates the internal electronic components and their connections, including the bass inductor (L) and various capacitors (C1, C2, C3), along with adjustment points J1 and J2. The default inductance for L is 4.7uH.

## MAINTENANCE

The GODIYMODULES RM 2-Way Crossover requires minimal maintenance. Follow these guidelines to ensure its longevity:

- **Keep Clean:** Regularly wipe the unit with a dry, soft cloth to remove dust. Avoid using liquid cleaners or solvents.
- **Avoid Moisture:** Protect the crossover from water and excessive humidity, as it is not waterproof.
- **Proper Ventilation:** Ensure the unit is installed in a location with adequate airflow to prevent overheating, although passive crossovers generate minimal heat.
- **Secure Connections:** Periodically check all wire connections to ensure they are secure and free from corrosion.

## TROUBLESHOOTING

If you encounter issues with your crossover, consider the following troubleshooting steps:

- **No Sound from a Speaker:**
  - Check all connections to ensure they are secure and correctly wired to the "IN", " ", and " " terminals.
  - Verify the speaker itself is functioning by connecting it directly to an audio source (if safe to do so).
  - Ensure correct polarity.
- **Distorted Sound:**
  - Review your amplifier's output levels. Overdriving the speakers can cause distortion.
  - Check the crossover's frequency adjustment settings (jumpers J1, J2). Incorrect settings can

lead to frequency overlap or gaps, causing unnatural sound.

- Ensure the speakers are rated for the power output of your amplifier.

• **Unbalanced Sound (e.g., too much bass, too little treble):**

- Adjust the crossover's frequency settings.
- Confirm that the correct speakers are connected to the appropriate high-frequency (tweeter) and low-frequency (woofer) outputs.

If problems persist after attempting these steps, consult a qualified audio technician.

SPECIFICATIONS

Model Name	RM
Brand	GODIYMODULES
Surround Sound Channel Configuration	2.0
Included Components	2 x 10A 35V Relay ( <i>Note: This seems to be a mislabeling in the source data, as the product is a crossover, not a relay. The image shows capacitors and inductors.</i> )
Material	Plastic (PCB base)
Item Weight	1.44 ounces (approx. 40.8 grams)
Package Dimensions	5.79 x 4.65 x 2.01 inches (approx. 14.7 x 11.8 x 5.1 cm)
Audio Output Mode	Stereo
Is Waterproof	No

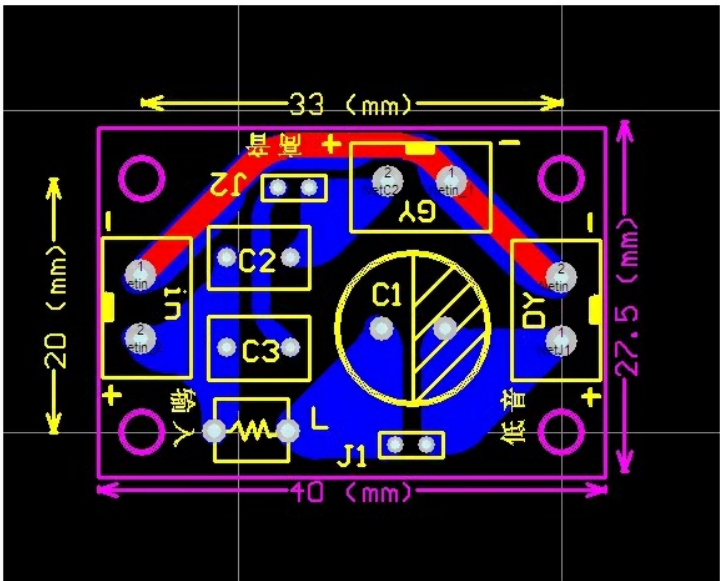


Image: Dimensional drawing of the crossover board. This diagram provides precise measurements of the unit, indicating a length of 40mm and a width of 27.5mm for the main board area.





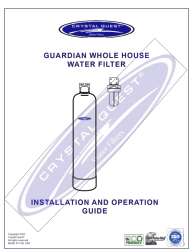
## WARRANTY AND SUPPORT

This GODIYMODULES product comes with a **Limited Warranty**. The specific terms and duration of the warranty may vary. Please retain your proof of purchase for warranty claims.

For technical support or warranty inquiries, please contact the seller or refer to the purchase platform for contact information. Ensure you have your product model (RM) and purchase details available when seeking support.

© 2025 GODIYMODULES. All rights reserved.

### Related Documents - RM

	<p><a href="#">RM 03 Macro Photography LED Light - Technical Specifications and Overview</a></p> <p>Discover the RM 03 Macro Photography LED Light, a versatile and powerful lighting solution for detailed close-up photography. Explore its adjustable brightness, color temperature, high CRI, and compact design for professional macro results.</p>
	<p><a href="#">A. O. Smith Water Filter Replacement Guide: Membrane, Remineralizer, Carbon &amp; Claryum Filters</a></p> <p>Comprehensive instructions for replacing A. O. Smith water filter components, including the AO-RO-RM-R membrane and remineralizer, and AO-4000-CARBON Carbon &amp; Claryum filters for the AO-US-RO-4000 system. Includes step-by-step guides and important maintenance information.</p>
	<p><a href="#">Sony VENICE MPC-3610 Digital Motion Picture Camera Operating Instructions</a></p> <p>Comprehensive operating instructions for the Sony VENICE MPC-3610 digital motion picture camera, detailing its advanced features, setup, operational procedures, and technical specifications for professional filmmaking.</p>
	<p><a href="#">Ashdown Engineering Rootmaster EVO II Bass Amplifier User Manual</a></p> <p>Comprehensive user manual for the Ashdown Engineering Rootmaster EVO II series bass amplifiers, covering features, controls, specifications, and operation for models like RM-800, RM-500, RM-300, and cabinets.</p>
	<p><a href="#">Crystal Quest Guardian Whole House Water Filter Installation and Operation Guide</a></p> <p>This guide provides detailed instructions for the installation, operation, and maintenance of the Crystal Quest Guardian Whole House Water Filter system. It covers important information, safety precautions, specifications, troubleshooting, and warranty details.</p>

