

[Manuals.plus](#) /

› [NEEWER](#) /

› Newer CRS6 Softbox Diffusion Dome User Manual

## NEEWER CRS6

# NEEWER CRS6 Softbox Diffusion Dome

User Instruction Manual

---

## INTRODUCTION

The NEEWER CRS6 Softbox Diffusion Dome is designed to soften and diffuse the harsh light from various flash units and continuous video lights, providing a more natural and flattering illumination. Its flexible silicone construction allows for different lighting effects, and the included adapter rings ensure broad compatibility with round head flashes, square speedlites, and NEEWER mount video lights.



Image: The NEEWER CRS6 Softbox Diffusion Dome shown with its three versatile adapter rings.

## PACKAGE CONTENTS

Please verify that all items listed below are included in your package:

- 1 x Silicone Diffusion Dome
- 1 x Square Flash Head Adapter Ring
- 1 x Round Flash Head Adapter Ring
- 1 x NEEWER Mount Adapter Ring for Video Light
- 1 x User Manual

# FOLDABLE & LIGHTWEIGHT

Confidently packed for travel with its soft texture and resilience against deformation. At just 15.52oz / 440g, it's easy to carry and always ready to go.



Image: All components included in the NEEWER CRS6 Softbox Diffusion Dome package.

## SETUP INSTRUCTIONS

Follow these steps to properly attach the diffusion dome to your lighting equipment:

- 1. Select the Appropriate Adapter Ring:** Identify the correct adapter ring for your flash unit or video light. The kit includes a Round Flash Head Adapter Ring (compatible with Godox V1, NEEWER Z1/Z2 series), a Square Flash Head Adapter Ring (compatible with NEEWER Z760, NW700, NW620, NW645II, TT560), and a NEEWER Mount Adapter Ring (compatible with NEEWER MS60B, MS60C, MS150B, Q45).
- 2. Attach Adapter Ring to Light Source:**
  - For **Round Flash Head Adapter Ring:** Align the adapter with your round head flash and secure it. This adapter features a built-in buckle for a secure fit.
  - For **Square Flash Head Adapter Ring:** Slide the adapter onto your square head flash. Use the two tighten knobs to firmly secure it in place. This adapter also includes a cold shoe for additional expansion.
  - For **NEEWER Mount Adapter Ring:** Attach this ring to compatible NEEWER video lights.
- 3. Mount the Silicone Diffusion Dome:** Once the adapter ring is securely attached to your light source, gently stretch the silicone diffusion dome over the adapter ring. Ensure the dome is fully seated and covers the adapter ring's rim for optimal light diffusion.



### Round Flash Head Adapter Ring

Compatible with NEEWER Z1-C / N / S; Z2-C / N / S; Compatible with Godox V1, etc.

! Note: Only supports 90° use.



### Square Flash Head Adapter Ring

Compatible with NEEWER Z880 Z760 NW-700 TT560, etc.

! Note: Only supports 90° use.



### NEEWER Mount Adapter Ring

Compatible with NEEWER MS60 MS60B MS60C MS150 MS150B MS150C, etc.

Image: Visual guide for attaching the three different adapter rings to various lighting units.

## OPERATING MODES

The flexible design of the CRS6 diffusion dome allows for various lighting effects:

- **360° Diffused Illumination:** When the dome is fully expanded, it provides a soft, omnidirectional light spread, ideal for filling a space with even illumination.
- **180° Diffused Illumination:** By folding the lower part of the dome inward, you can achieve a 180° diffused light, directing the light primarily forward and upward, suitable for specific subject lighting.
- **Focused Illumination:** Folding the upper part of the dome inward creates a more focused light beam, concentrating the light for a more direct effect.

# DIFFUSED & FOCUSED LIGHTING MODES

This soft, flexible dome can be squeezed into various shapes for diverse lighting effects.

360°  
Soft Glow



180°  
Soft Glow



Focused  
Light



Image: Demonstrates the different lighting effects achievable by manipulating the flexible dome.

The primary function of the CRS6 is to soften direct light and reduce harsh shadows, resulting in more flattering and natural illumination for your subjects.

# FLASH DOME DIFFUSER

Softens the direct light while reducing harsh shadows for more flattering and natural illumination.

With Dome Diffuser



Without Dome Diffuser



Image: A visual comparison showing the significant difference in light quality when using the diffusion dome versus direct flash.

The CRS6 is suitable for a wide range of photographic applications, from portraiture to product photography, enhancing the quality of light in various settings.

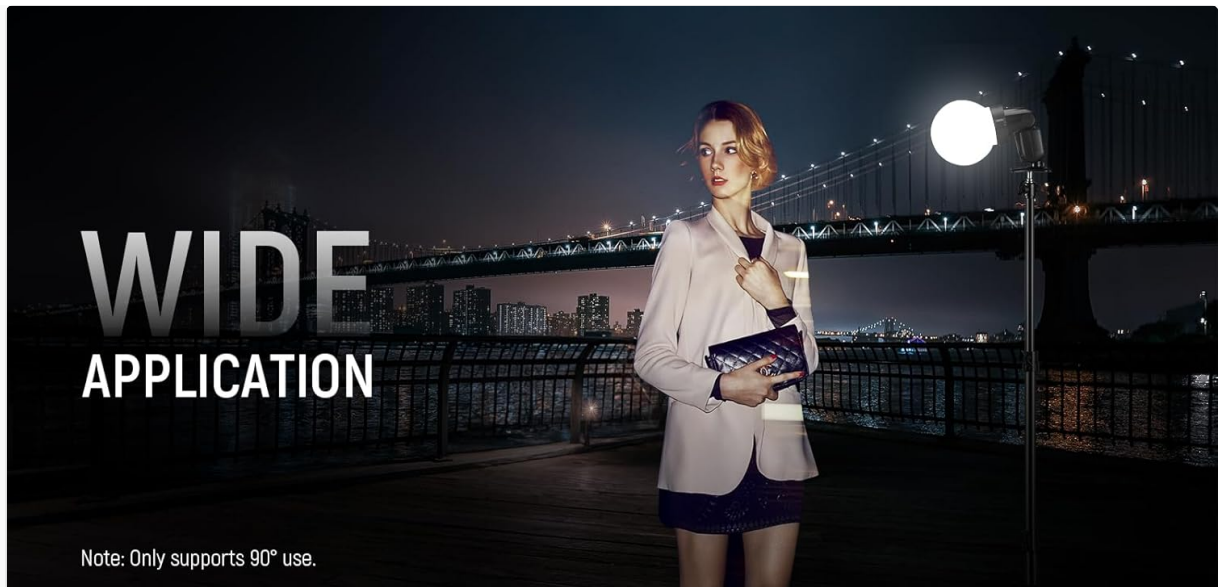


Image: Illustrates diverse scenarios where the CRS6 diffusion dome can be effectively utilized.

## MAINTENANCE

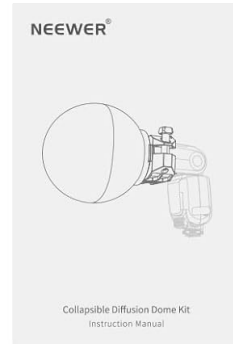
To ensure the longevity and optimal performance of your NEEWER CRS6 Softbox Diffusion Dome, please follow these maintenance guidelines:

- **Cleaning:** The silicone dome can be gently wiped clean with a soft, damp cloth. Avoid using abrasive cleaners or solvents that could damage the material. Ensure it is completely dry before storage.
- **Storage:** Thanks to its soft and foldable design, the dome can be easily packed for travel or storage. Store it in a clean, dry place away from direct sunlight and extreme temperatures to prevent deformation or damage.

# PACKAGE INCLUDE



1 x Silicone Diffusion Dome



1 x User Manual



1 x Round Flash Head Adapter Ring



1 x NEEWER Mount Adapter Ring for Video Light



1 x Square Flash Head Adapter Ring

Image: The diffusion dome's soft and flexible material allows for easy folding and compact storage.

## TROUBLESHOOTING

If you encounter any issues while using your NEEWER CRS6 Softbox Diffusion Dome, refer to the following common problems and solutions:

Problem	Possible Cause / Solution
Dome does not attach securely to flash/light.	<ul style="list-style-type: none"><li>◦ Ensure you are using the correct adapter ring for your specific flash or light model.</li><li>◦ For square head adapters, ensure the tighten knobs are fully secured.</li><li>◦ Verify the silicone dome is stretched completely over the adapter ring's rim.</li></ul>

Problem	Possible Cause / Solution
Light diffusion is uneven or insufficient.	<ul style="list-style-type: none"> <li>◦ Ensure the dome is fully expanded for 360° diffusion, or correctly folded for 180°/focused modes.</li> <li>◦ Check for any obstructions or debris inside the dome that might affect light spread.</li> <li>◦ Adjust your flash power settings as diffusion will reduce effective light output.</li> </ul>
Dome appears deformed or creased.	<ul style="list-style-type: none"> <li>◦ The silicone material is designed to be flexible and resilient. Minor creases from storage are normal and will not affect performance.</li> <li>◦ Ensure proper storage as described in the Maintenance section to minimize deformation.</li> </ul>

## SPECIFICATIONS

Feature	Detail
Model Number	CRS6
Material	Rubber (Silicone)
Item Weight	1.21 pounds (approx. 440g)
Package Dimensions	6.18 x 6.18 x 4.69 inches
Color	White
Light Source Compatibility	Flash, LED
Included Adapter Rings	Square Flash Head, Round Flash Head, NEEWER Mount for Video Light

## WARRANTY AND SUPPORT

NEEWER stands behind the quality of its products. For warranty activation and support, please refer to the information below:

- **Warranty Activation:** To activate your product warranty, please visit the official NEEWER website: [www.neewer.com](http://www.neewer.com).
- **Customer Support:** For any inquiries, technical assistance, or support needs, you may contact NEEWER customer service via email at: [vip@neewer.com](mailto:vip@neewer.com).

