

## Ingnok 70a5213a-bcb8-45cb-89e2-4e7f0792ec26

# Ingnok 15.6" FHD IPS Portable Monitor

## User Manual

### 1. INTRODUCTION

Thank you for choosing the Ingnok 15.6" FHD IPS Portable Monitor. This ultra-slim and versatile external screen is designed to enhance your productivity and entertainment experience on the go. This manual provides detailed instructions for setup, operation, maintenance, and troubleshooting to ensure optimal performance and longevity of your device.

### 2. PRODUCT OVERVIEW

#### 2.1 Key Features

- **Ultra-Thin and Portable Design:** Weighing just 1.46 pounds (650 grams) and with a thickness of only 0.2 inches at its thinnest point, this monitor is exceptionally easy to carry for travel or desk use.
- **1080P Full HD IPS Display:** Enjoy clear, vivid details and true-to-life color reproduction on the 15.6-inch IPS screen with a 1920x1080 resolution.
- **Adjustable Stand:** The integrated stand allows for flexible viewing angles and supports 360-degree rotation, ensuring a comfortable viewing experience. It also features 75x75MM VESA wall mounting holes.
- **Versatile Connectivity:** Equipped with USB-C and Mini HDMI ports, offering broad compatibility with laptops, smartphones, gaming consoles (PS4, PS5, Switch), and PCs.
- **Plug & Play Functionality:** Simple and quick connection for immediate use, boosting productivity for multitasking.

#### 2.2 What's in the Box

- Ingnok 15.6" FHD IPS Portable Monitor
- Adjustable Bracket Stand
- USB-C to USB-C Cable (for data and power)
- Mini HDMI to HDMI Cable
- USB-A to USB-C Cable (for power only)
- Protective Sleeve
- VESA Screws (2x)
- User Manual (this document)

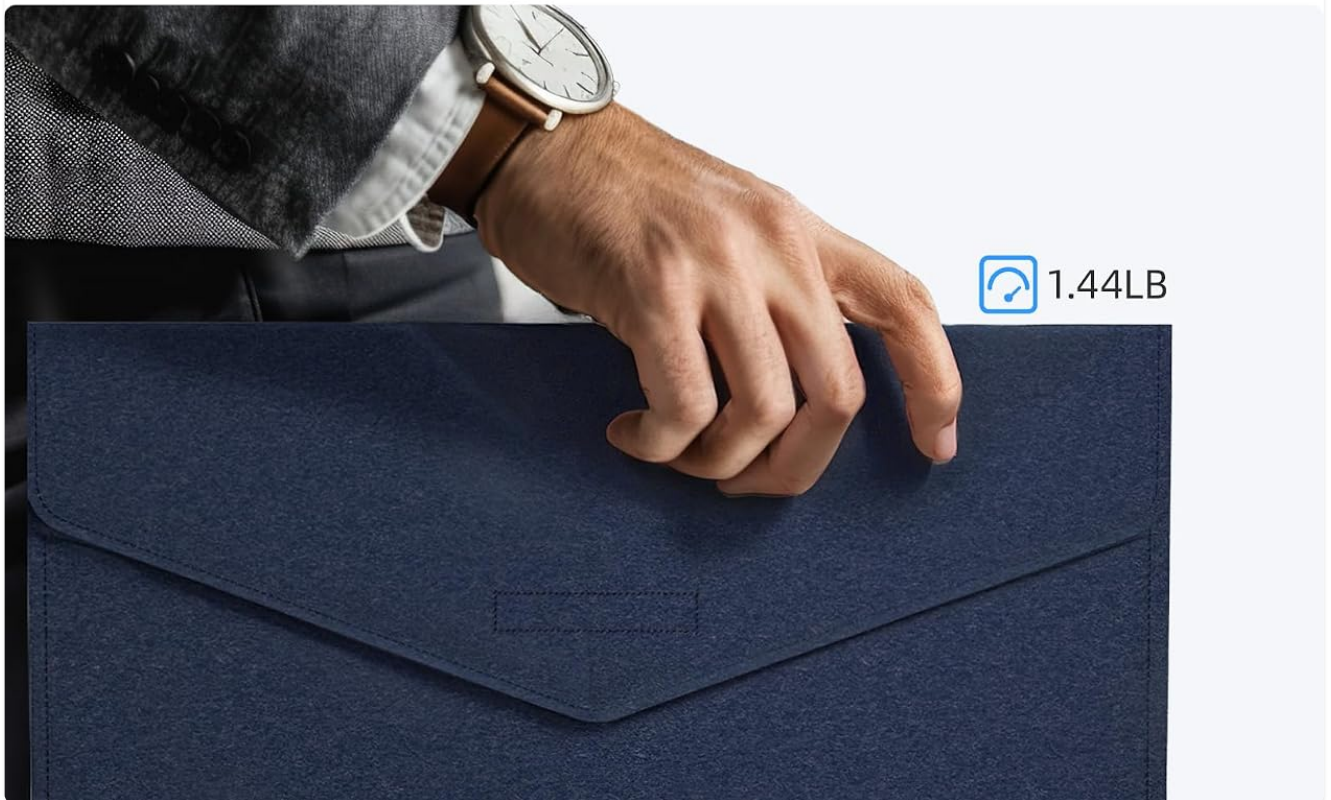
2.3 Product Visuals



Figure 2.3.1: The Ingnok 15.6" FHD IPS Portable Monitor with its included stand, showcasing its sleek design and accessories.

# Ultra-Thin Design Easy to Carry

0.26inch



 1.44LB

Figure 2.3.2: Demonstrating the monitor's ultra-thin design, measuring 0.26 inches at its thinnest point.

# 1080P Full HD IPS Display

16.7M Colors

16:9

IPS

8 Bit

1200:1 Contrast Ratio

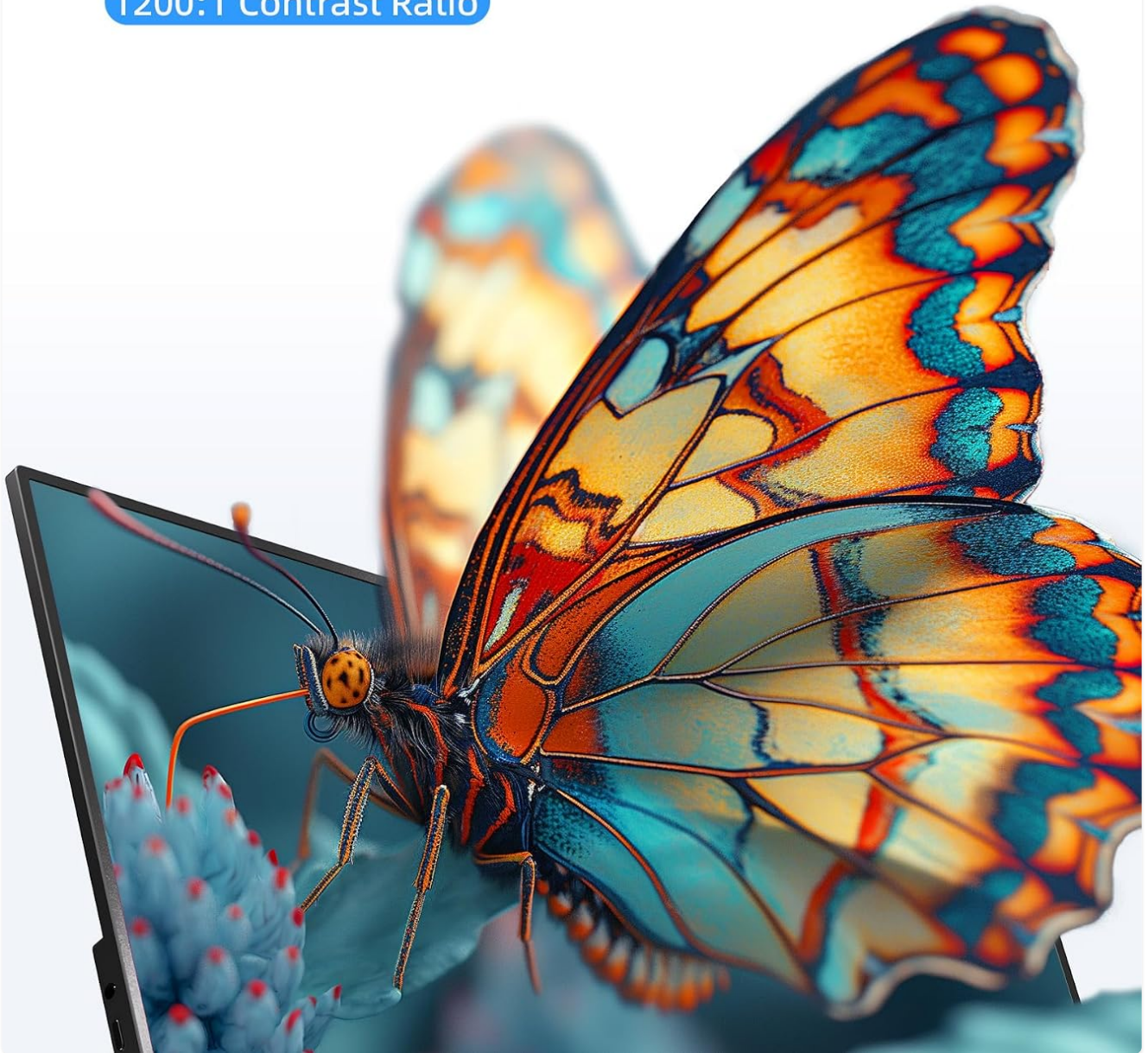


Figure 2.3.3: The 1080P Full HD IPS Display, offering 16.7M Colors, 16:9 aspect ratio, and a 1200:1 Contrast Ratio for an immersive visual experience.

## 3. SETUP

### 3.1 Connecting to Devices

The Ingnok portable monitor offers flexible connectivity options to suit various devices. Ensure your device's port supports video output for proper functionality.

- **USB-C Connection (Full-Featured Type-C 3.1 Port):** For devices with a full-featured USB-C 3.1 port (supporting video output and power delivery), a single USB-C to USB-C cable can provide both video signal and power to the monitor. This is ideal for laptops, tablets, and some smartphones.
- **HDMI Connection:** For devices with an HDMI output (e.g., gaming consoles, older laptops, PCs), use the provided Mini HDMI to HDMI cable for video. An additional power source (via the USB-A to USB-C power cable and a 20W

power adapter, not included) is required to power the monitor.

- **Type-C + Power Cable:** For devices that require separate power, connect the Type-C cable for video and the USB-A to USB-C power cable for power.

## A Variety Of Compatible Devices

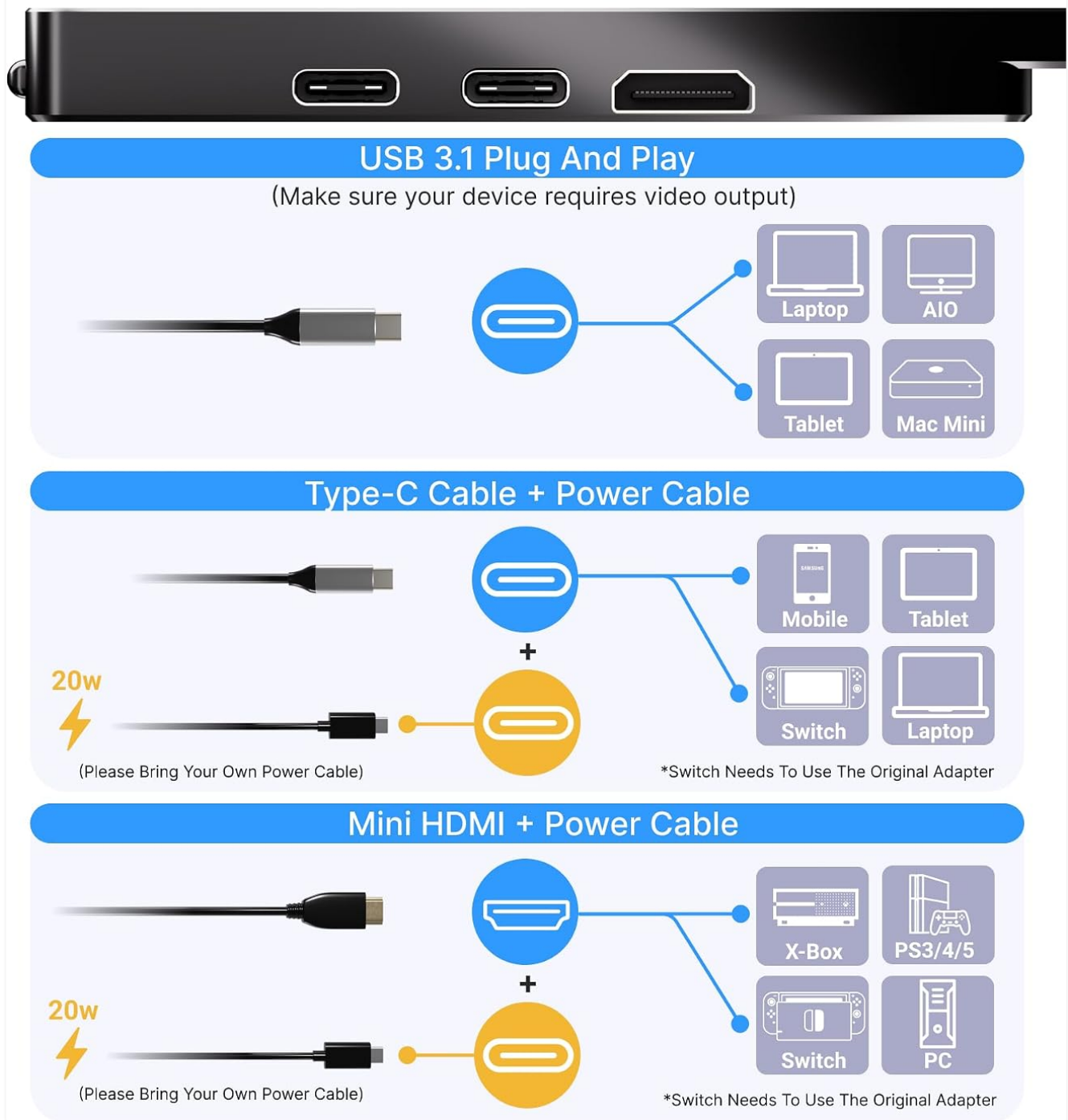


Figure 3.1.1: Connection options for various compatible devices. Note: For Nintendo Switch, use the original adapter.

Your browser does not support the video tag.

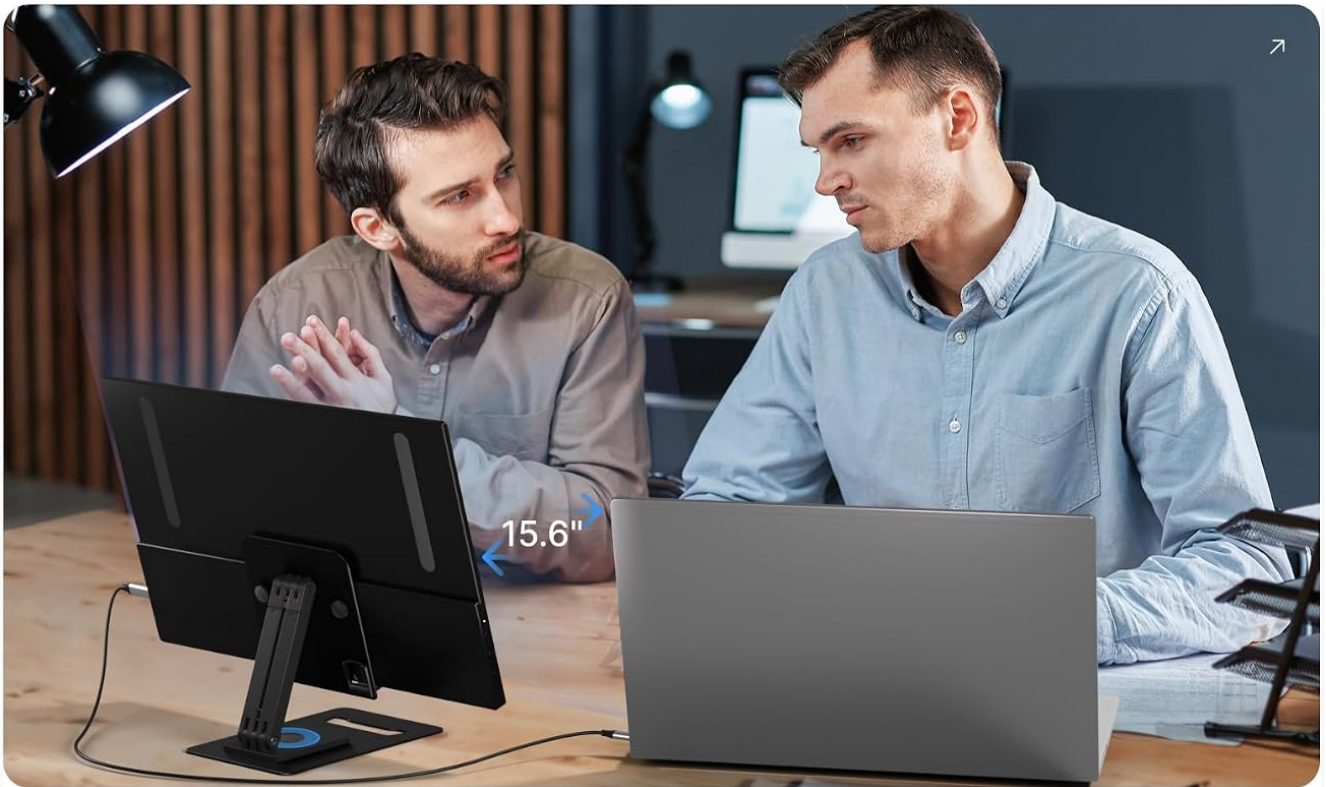
Video 3.1.2: A short demonstration of the monitor's plug-and-play functionality and portability, showing it being connected and used with a laptop.

### 3.2 Using the Adjustable Stand

The integrated stand provides stability and allows for versatile positioning of your monitor.

- **Adjusting Viewing Angle:** The stand can be adjusted to various angles to find your most comfortable viewing position.

- **Rotation:** The monitor supports 360-degree rotation, allowing for both landscape and portrait orientations.
- **VESA Mounting:** For more permanent setups, the monitor is equipped with 75x75MM VESA mounting holes. Use the provided VESA screws to attach it to a compatible VESA mount (not included).



## Adjustable And Rotatable



Recommended Angle

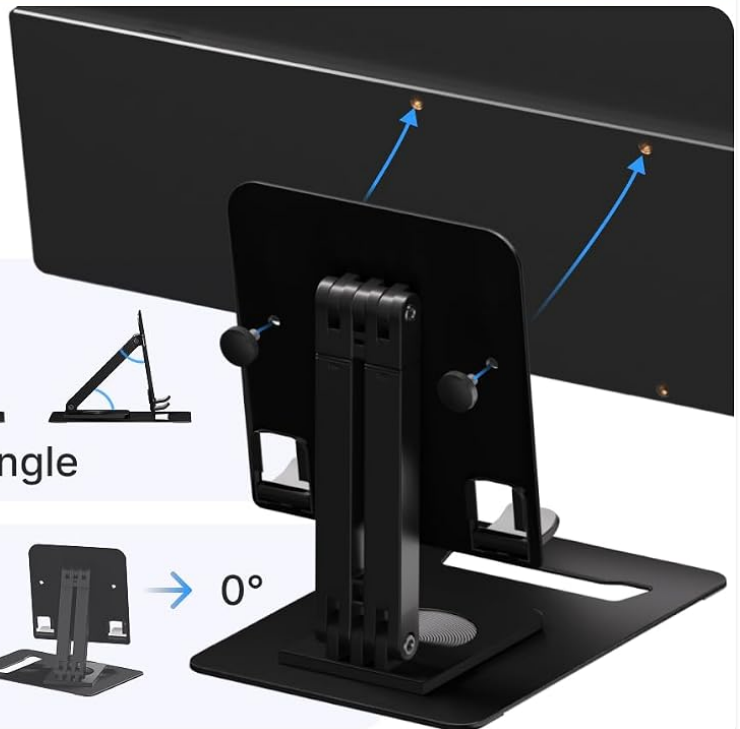


Figure 3.2.1: The adjustable and rotatable stand allows for optimal viewing angles in various scenarios.

# only one viewing angle



# Flexible change of viewing angle



Figure 3.2.2: Flexible viewing angle changes and 360-degree rotation for enhanced usability.

## 4. OPERATING INSTRUCTIONS

### 4.1 Basic Functions

The monitor features intuitive buttons for basic controls. Refer to the diagram below for button locations.



Figure 4.1.1: Monitor ports and control buttons. Note: Button labels may not be immediately intuitive; refer to this manual for functions.

- **Power On/Off:** Press and hold the power button (usually the top-most button) to turn the monitor on or off.
- **Brightness Adjustment:** Use the designated shortcut buttons (often marked with '+' and '-' or arrows) to increase or decrease screen brightness.
- **Volume Control:** Use the volume shortcut buttons to adjust the audio output. Please note that the built-in speakers are primarily for basic audio and may not provide high-fidelity sound. External headphones or speakers are recommended for optimal audio experience.
- **Menu Navigation:** Access the On-Screen Display (OSD) menu by pressing the menu button. Navigate through

options using the directional buttons and confirm selections.

## 4.2 Display Modes

When connected to a computer, you can configure the display mode through your operating system's display settings:

- **Extend Mode:** Extends your desktop across both screens, allowing for more workspace.
- **Duplicate Mode:** Mirrors your primary display onto the portable monitor.
- **Second Screen Only:** Displays content only on the portable monitor, turning off the primary display.

# Plug & Play

improve work efficiency by 100% !



Mac



Windows



Figure 4.2.1: Using the portable monitor to boost productivity in a work setting.

## 5. MAINTENANCE

Proper care will extend the life of your monitor.

- **Cleaning the Screen:** Gently wipe the screen with a soft, lint-free cloth. For stubborn marks, dampen the cloth slightly with water or a screen-cleaning solution. Avoid harsh chemicals or abrasive materials.
- **Cleaning the Casing:** Use a soft, dry cloth to clean the monitor's casing.
- **Storage:** When not in use, store the monitor in its protective sleeve to prevent scratches and dust accumulation. Keep it in a cool, dry place away from direct sunlight and extreme temperatures.

## 6. TROUBLESHOOTING

If you encounter issues with your Ingnok portable monitor, please refer to the following common solutions:

Problem	Possible Cause	Solution
Monitor does not turn on.	No power, loose cable, insufficient power.	Ensure all cables are securely connected. If using HDMI, confirm external power is supplied (20W adapter recommended). Try a different power outlet or USB port on your device.
No signal / Display not showing.	Incorrect input source, cable issue, device not outputting video.	Check if your device's USB-C port supports video output. Ensure the correct input source is selected on the monitor (if applicable). Try a different cable or port. Restart your connected device.
Poor image quality / Flickering.	Cable quality, resolution settings, interference.	Use the provided cables. Adjust the display resolution on your connected device to 1920x1080. Ensure no strong electromagnetic interference sources are nearby.
No audio or low volume.	Volume settings, audio output selected incorrectly.	Increase monitor volume using the control buttons. Check audio output settings on your connected device to ensure the monitor is selected. Consider using external speakers or headphones for better audio.
USB-C hub not working.	Hub compatibility, power delivery issues.	Some USB-C hubs may not fully support video pass-through or sufficient power delivery. Try connecting directly to your device's USB-C port or use the HDMI connection with external power.

If the problem persists after trying these solutions, please contact Ingnok customer support for further assistance.

## 7. SPECIFICATIONS

Feature	Detail
Model Number	70a5213a-bcb8-45cb-89e2-4e7f0792ec26
Screen Size	15.6 Inches
Resolution	1920 x 1080 Pixels (FHD 1080p)
Panel Type	IPS
Aspect Ratio	16:9
Image Brightness	300 Candela

Feature	Detail
Product Dimensions	13.78 x 8.66 x 0.31 inches
Item Weight	1.46 pounds
Connectivity	USB-C (Total 1), Mini HDMI
Voltage	5 Volts (DC)
Screen Surface	Matte

## 8. SAFETY INFORMATION

---

Please read the following safety information carefully before using the monitor:

- This monitor does **not** have touch functionality.
- This monitor does **not** have Wi-Fi or Bluetooth capabilities.
- This monitor does **not** have a built-in battery and requires an external power source.
- This device is **not** a tablet and does not run an operating system.
- Avoid exposing the monitor to extreme temperatures, humidity, or direct sunlight.
- Do not disassemble or attempt to repair the monitor yourself. Refer to qualified service personnel.
- Keep the monitor away from liquids and excessive dust.

## 9. WARRANTY AND SUPPORT

---

For any issues or questions regarding your Ingnok portable monitor, please refer to your warranty card for specific terms and conditions. You can also contact the seller, SmartRefurbished, directly for support. For more information about Amazon Renewed products, visit the [Amazon Renewed Store](#).

© 2025 Ingnok. All rights reserved.

Model: 70a5213a-bcb8-45cb-89e2-4e7f0792ec26