

Manuals+

[Q & A](#) | [Deep Search](#) | [Upload](#)

Manuals.plus /

› [QIQIBABA](#) /

› 1006801R Control Board for E7 & B6 Series Electric Furnace, Replacement Printed Circuit Board, W/Electric Heat, Single Stage

QIQIBABA 1006801R

1006801R Control Board Instruction Manual

Model: 1006801R | Brand: QIQIBABA

INTRODUCTION

This manual provides essential information for the installation, operation, and maintenance of the QIQIBABA 1006801R Control Board. This printed circuit board is designed as a direct replacement for electric furnaces in the E7 and B6 series, specifically for single-stage electric heat systems. Proper installation and adherence to safety guidelines are crucial for optimal performance and safety.

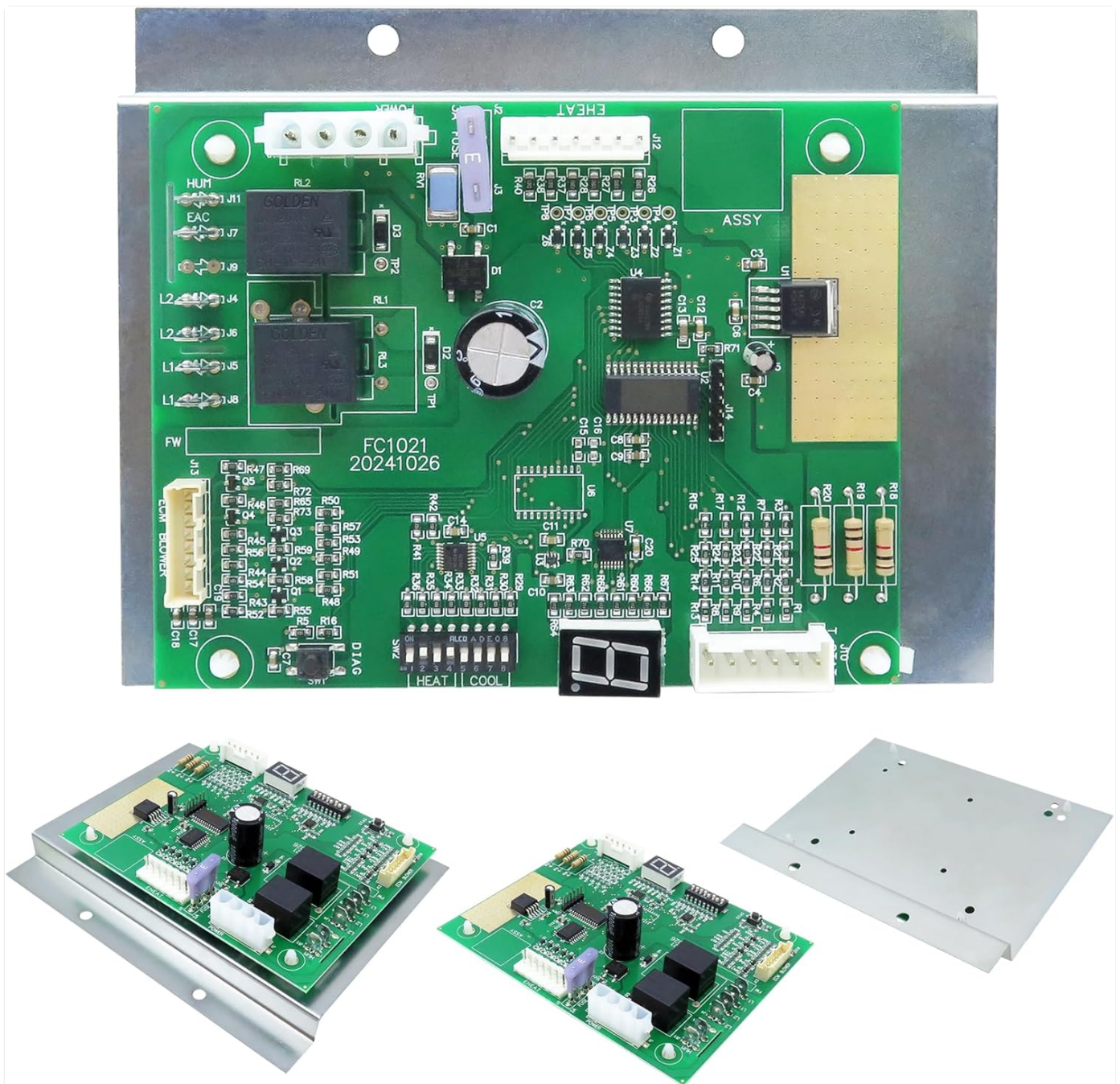


Figure 1: Overview of the 1006801R Control Board.

SAFETY INFORMATION

Always prioritize safety when working with electrical components and heating systems. Failure to follow these safety instructions could result in property damage, serious injury, or death.

- **Disconnect Power:** Before attempting any installation, maintenance, or repair, ensure that all power to the furnace and associated systems is completely disconnected at the main circuit breaker or fuse box. Verify power is off using a voltage tester.
- **Qualified Personnel:** Installation and servicing should only be performed by a qualified HVAC technician or a licensed electrician. Improper installation can lead to electrical shock, fire, or damage to the equipment.
- **Static Discharge:** Electronic components are sensitive to static electricity. Discharge any static electricity from your body before handling the control board by touching a grounded metal object. Consider wearing an anti-static wrist strap.
- **Inspect Components:** Before installation, visually inspect the new control board for any signs of damage. Do not install a damaged board.

- **Follow Local Codes:** All installations must comply with local and national electrical and building codes.

COMPATIBILITY

The 1006801R Control Board is designed for specific furnace and air handler models. Verify your existing unit's model number against the lists below to ensure compatibility.

- **Compatible Brands:** NOrdyne, Gibson, Frigidaire, Westinghouse, Philco, Tappan, Interthem, Miller, and other NOrdyne furnaces.
- **Replaces OE Part Numbers:** 1006801R, 1006800/1.

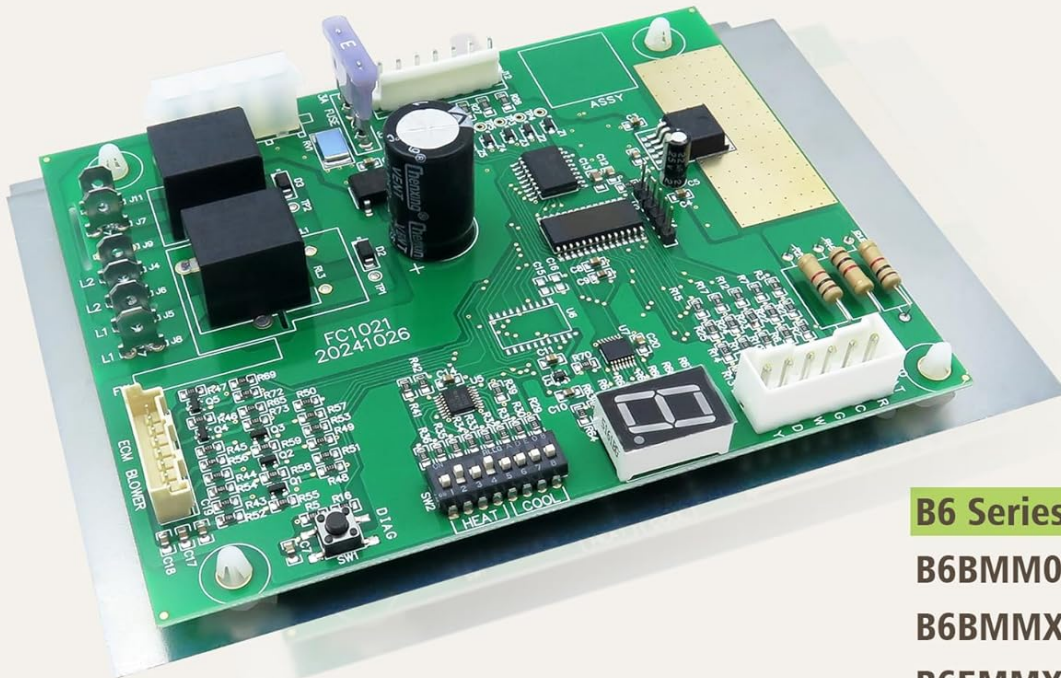
For E7 Series Furnace Models:

This single-stage circuit board fits furnace & air handler models E7 and FSHE. Compatible with models ending in -010, -012, -015, -017, -020, -023.

- **E7EM Series:** E7EM-010H1, E7EM-012H1, E7EM-015H1, E7EM-017H1, E7EM-020H1, E7EM-023H1
- **E7ED Series:** E7ED-010H1, E7ED-012H1, E7ED-015H1, E7ED-017H1, E7ED-020H1, E7ED-023H1
- **E7EU Series:** E7EU-010H1, E7EU-012H1, E7EU-015H1, E7EU-017H1, E7EU-020H1, E7EU-023H1

1006801R Control Board

Compatible with E7 & B6 Series Electric Furnace



E7EB Series

E7EBE-010H
E7EBE-012H
E7EBE-015H
E7EBE-017H
E7EBE-020H
E7EBE-023H

E7ED Series

E7ED-010H1
E7ED-012H1
E7ED-015H1
E7ED-017H1
E7ED-020H1
E7ED-023H1

E7EM Series

E7EM-010H1
E7EM-012H1
E7EM-015H1
E7EM-017H1
E7EM-020H1
E7EM-023H1

E7EU Series

E7EU-010H1
E7EU-012H1
E7EU-015H1
E7EU-017H1
E7EU-020H1
E7EU-023H1

B6 Series

B6BMM060K-C
B6BMMX60K-C
B6EMMX24K-A
B6EMMX24K-B
B6EMMX30K-A
B6EMMX30K-B
B6EMMX36K-B
B6EMMX42K-B
B6EMMX48K-C
B6EMMX60K-C

Figure 2: Detailed compatibility for E7 and B6 series models.

For B6 Series Furnace Models:

Also suitable for the following B6 Series Air Handlers:

- B6BMM0 Series Air Handler (B6BMM060K-C)
- B6BMMX Series Air Handler (B6BMMX60K-C)
- B6EMMX Series Air Handler (B6EMMX24K-A / B6EMMX24K-B / B6EMMX30K-A / B6EMMX30K-B / B6EMMX36K-B / B6EMMX42K-B / B6EMMX48K-C / B6EMMX60K-C)

Note: For B6BMMX Series Air Handler, use on units produced on or before 12/31/2017.

SETUP AND INSTALLATION

The installation of a furnace control board requires careful attention to detail and electrical safety. It is highly recommended that this procedure be performed by a certified HVAC technician.

acts as the central processing unit, receiving signals from the thermostat and other sensors to control the heating elements, blower motor, and other furnace functions.

- **Thermostat Communication:** The board interprets signals from your thermostat to determine when to activate or deactivate the heating cycle.
- **Blower Control:** It manages the operation of the furnace's blower motor, ensuring proper airflow for heating and cooling (if applicable).
- **Safety Features:** The board incorporates safety circuits that monitor furnace operation and will shut down the system if unsafe conditions (e.g., overheating) are detected.
- **Diagnostic Indicators:** Some control boards include LED diagnostic lights that can help identify system faults. Refer to your furnace's specific manual for interpreting these codes.

MAINTENANCE

The 1006801R Control Board itself requires no routine maintenance. However, regular maintenance of your furnace system is essential for its longevity and efficient operation.

- **Annual Professional Inspection:** Have your furnace system inspected and serviced annually by a qualified HVAC technician. This includes checking electrical connections, cleaning components, and verifying proper operation.
- **Air Filter Replacement:** Regularly replace or clean your furnace's air filter according to the manufacturer's recommendations (typically every 1-3 months). A dirty filter restricts airflow, which can strain the furnace and potentially affect the control board.
- **Keep Area Clear:** Ensure the area around your furnace is clear of obstructions and combustible materials to allow for proper airflow and prevent fire hazards.

TROUBLESHOOTING

If your furnace is not operating correctly after installing the 1006801R Control Board, consider the following common troubleshooting steps. For complex issues, consult a qualified technician.

Problem	Possible Cause	Solution
Furnace not turning on	No power to the unit; thermostat setting incorrect; loose wiring connection; tripped circuit breaker.	Check circuit breaker; ensure thermostat is set to heat and fan is on auto; verify all wiring connections on the control board are secure.
Blower not operating	Blower motor issue; control board fault; thermostat fan setting.	Check thermostat fan setting (try "On" instead of "Auto"); inspect blower motor for obstructions; if problem persists, professional diagnosis is needed.
Furnace cycles on and off rapidly (short cycling)	Restricted airflow (dirty filter); overheating; faulty sensor.	Replace air filter; ensure vents are open; check for obstructions around the furnace. If the issue continues, a technician should inspect for overheating or sensor problems.
Diagnostic LED codes on board	Indicates a specific system fault.	Refer to your furnace's original manual for the interpretation of specific LED flash codes. These codes pinpoint the exact issue.

SPECIFICATIONS

WARRANTY AND SUPPORT

The QIQIBABA 1006801R Control Board comes with a warranty to ensure customer satisfaction.

- **Warranty Description:** Free return and exchange within six months from the date of purchase.
- **Customer Support:** For technical assistance, warranty claims, or further inquiries, please contact QIQIBABA customer service through the retailer where the product was purchased.

