

YEEHUNG FY-LCD-Cluster

YEEHUNG 12.3-Inch LCD Digital Cluster Dashboard Instruction Manual

For Mercedes C GLC Class W205 X253 (2016-2019) NTG5.0

1. PRODUCT OVERVIEW

The YEEHUNG 12.3-inch LCD Digital Cluster Dashboard is designed to replace the mechanical instrument panel in compatible Mercedes-Benz vehicles. It provides a modern digital display for essential driving information, enhancing both functionality and the aesthetic of the vehicle's interior.



Image 1.1: The YEEHUNG 12.3-inch LCD Digital Cluster Dashboard unit.

This digital cluster integrates seamlessly, preserving all original functions while offering a customizable user interface and improved readability.

2. COMPATIBILITY

This product is compatible with the following Mercedes-Benz models:

- Mercedes C-Class W205 (2016-2019) with NTG5.0/5.1 system
- Mercedes GLC-Class X253 (2016-2019) with NTG5.0/5.1 system

To ensure compatibility, it is recommended to verify your vehicle's model year and existing infotainment system (NTG5.0/5.1). If uncertain, consult with the seller or a qualified technician.

APPLICABLE MODEL YEAR

2016-2019 C-CLASS W205 NTG5.0/5.1



2016-2019 GLC-CLASS X253 NTG5.0/5.1



Image 2.1: Visual representation of compatible Mercedes C-Class W205 and GLC-Class X253 dashboards.

3. KEY FEATURES

- **12.3-inch LCD Display:** High-definition screen for clear data presentation.
- **Digital Speedometer:** Provides accurate speed display for enhanced driving safety.
- **Retains OEM Functions:** All original speedometer panel functions are preserved.
- **Customizable UI:** Multiple theme styles and variable pointer colors available.
- **HDMI Screen Mirroring Support:** Synchronizes with Android navigation screens that support HDMI output (requires separate HDMI box and cable).
- **Real-time Data Display:** Shows vehicle maintenance information, energy consumption, fuel consumption, tire pressure, and more.
- **Original Motherboard Retention:** Utilizes the original PCB motherboard, ensuring mileage data is not reset and supporting OEM media information (Bluetooth, radio, CD).

RETAINS OEM PCB MOTHERBOARD

- mileage does not have to be reset.
- support OEM media all information, such as bluetooth, radio, CD information display etc.



Original Motherboard



Original Vehicle Information

Image 3.1: Illustration of retaining the original PCB motherboard and displaying original vehicle information on the new digital cluster.

4. SETUP AND INSTALLATION

Installation of the YEEHUNG LCD Digital Cluster Dashboard requires technical expertise. It is recommended that installation be performed by a qualified professional. The product includes a power cable and an installation flowchart.

4.1 Package Contents

- 1 x 12.3-inch LCD Digital Cluster Dashboard unit
- 1 x Housing
- 1 x Power Cable
- 1 x Installation Flowchart (Instruction Manual)

DIMENSIONS AND ACCESSORIES



Image 4.1: Dimensions of the LCD cluster and included accessories.

4.2 Pre-Installation Notes

- Ensure the vehicle's ignition is off and the battery is disconnected before beginning installation.
- Refer to the provided installation flowchart for detailed, step-by-step instructions.
- Handle all components with care to prevent damage.

5. OPERATING INSTRUCTIONS

The digital cluster is operated primarily using the existing steering wheel controls.



Image 5.1: Diagram illustrating the functions of steering wheel controls for the digital cluster.

5.1 Basic Navigation

- **Up/Left Button:** Press once to move one step up or to the left in menus.
- **Down/Right Button:** Press once to move one step down or to the right in menus.
- **OK Button:** Press once to confirm a selection. Long press to quickly adjust the view window in projection mode.
- **Return Button (Left Arrow):** Press once to return to the previous level.
- **Home Button (House Icon):** Press once to return to the main interface. Long press for 3 seconds to quickly switch the theme UI interface.

5.2 User Interface (UI) Customization

The digital cluster offers various UI styles and themes to personalize your driving experience.

LCD DASHBOARD STYLE UI



Image 5.2: Examples of different LCD Dashboard UI styles.

To switch themes, long press the Home button (house icon) on your steering wheel for 3 seconds. You can also customize themes and pointer colors through the settings menu.

Support For Custom Themes And Pointer Colors

6 transition animation switching modes

Bounce fall

Separate merge

Fade in out

Reduce enlarge

Left in right out

Falling rebound



Image 5.3: Interface for customizing themes and pointer colors, showing various transition animations.

5.3 Projection Function (Screen Mirroring)

The digital cluster supports screen mirroring from an Android navigation screen. This feature allows navigation information and other Android screen content to be displayed directly on the cluster.

- **Requirement:** This function requires a separate HDMI box and cable, which must be purchased independently.
- **Compatibility:** The Android screen must support HDMI output.
- **Operation:** Once connected, the Android screen content will synchronize with the digital cluster.

PROJECTION FUNCTION

Note: To use this feature, you **must purchase** a separate **HDMI box** and **cable** and make sure you have an Android screen.



Synchronize the screen of the Android navigation screen.
Note: Be sure to use a center screen with HDMI output.

Image 5.4: Example of the projection function, showing an Android navigation screen mirrored onto the digital cluster.

TRANSPARENT DIAL SHOWS ONLY REAL-TIME SPEED AND RPM

Transparent dials only show the current speed and RPM of the car traveling, so you can precisely control the car and enjoy the smart driving process.



Image 5.5: Another view of HDMI screen mirroring, providing navigation information.

5.4 Displayed Information

The digital cluster provides a comprehensive display of vehicle data.

- **Vehicle Maintenance Information:** Displays upcoming service reminders.



Image 5.6: Display showing active maintenance details.

- **Energy Consumption Display:** Shows real-time energy usage.

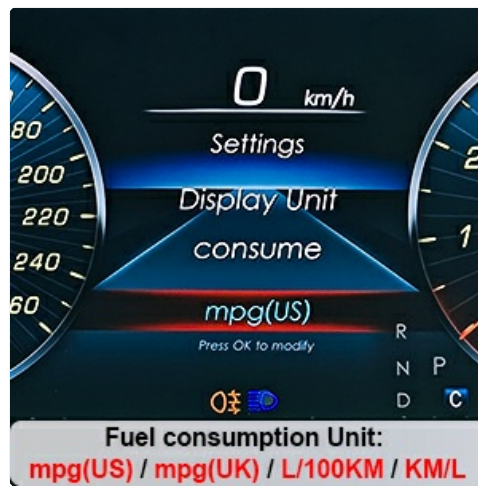


Image 5.7: Display showing current energy consumption (e.g., mpg).

- **Fuel Consumption Display:** Provides detailed fuel usage statistics.

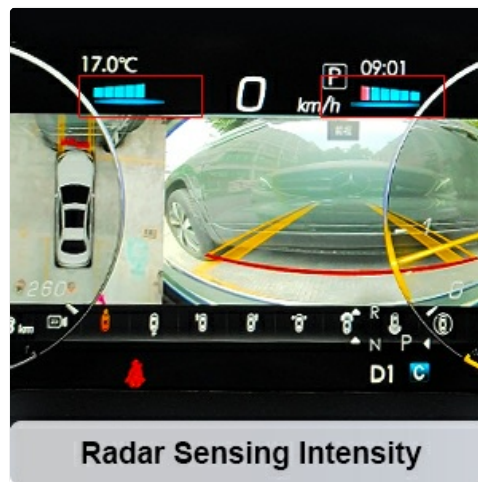


Image 5.8: Display showing fuel consumption after starting the vehicle.

- **Tire Pressure Display:** Shows individual tire pressure readings.

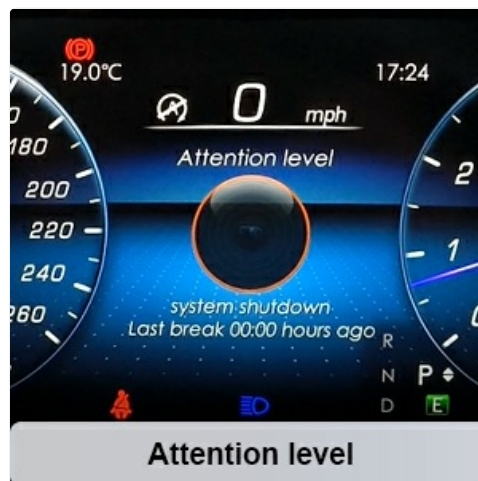


Image 5.9: Display showing tire pressure for each wheel.

- **Tire Pressure Unit Selection:** Allows selection between kPa, Psi, or Bar.



Image 5.10: Settings menu for selecting tire pressure units.

- **Winter Tire Speed Limit:** Displays the set speed limit for winter tires (160-210 KM/H).



Image 5.11: Display showing the configured speed limit for winter tires.

- **Mileage Unit Selection:** Choose between Miles or Kilometers.



Image 5.12: Settings menu for selecting mileage units (Miles/KM).

- **Temperature Unit Selection:** Choose between °F or °C.



Image 5.13: Settings menu for selecting temperature units (°F/°C).

- **Radar Sensing Intensity:** Visual representation of radar sensor activity.



Image 5.14: Display showing radar sensing intensity, often integrated with a 360-degree view.

- **Open Door Reminder:** Visual alert for open doors.



Image 5.15: Display showing an open door reminder with a visual car diagram.

- **Attention Level:** Displays driver attention assist status.



Image 5.16: Display showing the attention assist level and system status.

The transparent dial feature focuses on real-time speed and RPM, allowing for precise control and an unobstructed view.



Image 5.17: Transparent dial design emphasizing current speed and RPM.

6. MAINTENANCE

The YEEHUNG LCD Digital Cluster Dashboard is designed for durability and minimal maintenance.

- **Cleaning:** Use a soft, lint-free cloth to gently wipe the screen. Avoid abrasive cleaners or solvents that could damage the display.
- **Software Updates:** Periodically check with the manufacturer or seller for any available software updates to ensure optimal performance and access to new features.
- **Environmental Conditions:** Avoid exposing the unit to extreme temperatures or direct sunlight for prolonged periods, as this may affect screen longevity.

7. TROUBLESHOOTING

This section addresses common questions and issues.

- **"Will this fit my car?"**
If you are unsure about compatibility, send a photo of your car's dashboard and the model year to the seller for verification to avoid installation errors.
- **"Display is blank or not powering on."**
Check all power cable connections to ensure they are securely seated. Verify that the vehicle's battery is properly connected and charged. If the issue persists, consult a professional installer.
- **"Projection function is not working."**

Ensure you have purchased a separate HDMI box and cable. Confirm that your Android screen supports HDMI output. Check all HDMI connections for proper seating.

- **"Mileage or other OEM information is incorrect."**

The unit is designed to retain OEM PCB motherboard data. If discrepancies occur, re-check installation steps or contact technical support.

For further assistance, please contact customer support. Clearly describe your problem to facilitate a quick resolution.

8. SPECIFICATIONS

Brand	YEEHUNG
Model Number	FY-LCD-Cluster
Screen Size	12.3 inches
Resolution	1920x720
Operating System	Linux
Material	Plastic
Product Dimensions (L x W x H)	15.7 x 7.8 x 10.8 inches (39.88 x 19.81 x 27.43 cm)
Item Weight	8.82 Pounds (4 Kilograms)

LCD CLUSTER BASIC PARAMETERS

HD accurate presentation of data, colorful, dynamic pointer, intelligent eye protection.limited to technology and luxury texture.



Image 8.1: Basic parameters of the LCD cluster, including system, screen size, vehicle type, and resolution.

9. WARRANTY AND SUPPORT

YEEHUNG is committed to providing quality products and customer satisfaction.

- **Product Quality:** All products undergo strict screening to ensure quality and aesthetic standards.
- **After-Sales Service:** A dedicated after-sales service team is available to assist with any issues.
- **Contact Support:** If you encounter any problems, clearly describe your issue and contact the seller. Responses are typically provided within 24 hours.

For specific warranty details, please refer to your purchase documentation or contact the seller directly.