

Manuals.plus /

› Samsung /

› Samsung Galaxy S25 Smartphone Instruction Manual

## Samsung SM-S931UZSEXAA

# Samsung Galaxy S25 Smartphone Instruction Manual

Model: SM-S931UZSEXAA

## OVERVIEW

The Samsung Galaxy S25 is a powerful smartphone designed to streamline your daily tasks with advanced AI features, a high-performance processor, and an exceptional camera system. This manual provides essential information for setting up, operating, maintaining, and troubleshooting your device.



Image: Samsung Galaxy S25 with prominent 'Galaxy AI' branding, showcasing the device's core innovation.

## SETUP

### What's in the Box

- Samsung Galaxy S25 Smartphone
- USB Cable
- SIM Tray Ejector
- Quick Start Guide

## Initial Device Setup

1. **Power On:** Press and hold the Power button until the Samsung logo appears.
2. **Follow On-Screen Prompts:** Select your language, connect to Wi-Fi, and agree to the terms and conditions.
3. **Insert SIM Card:** Use the provided SIM Tray Ejector to open the SIM tray. Place your Nano-SIM card(s) into the tray and reinsert it into the phone. The S25 supports dual SIM cards.
4. **Data Transfer with Smart Switch:** Easily move content and applications from your previous phone to your new Galaxy S25.

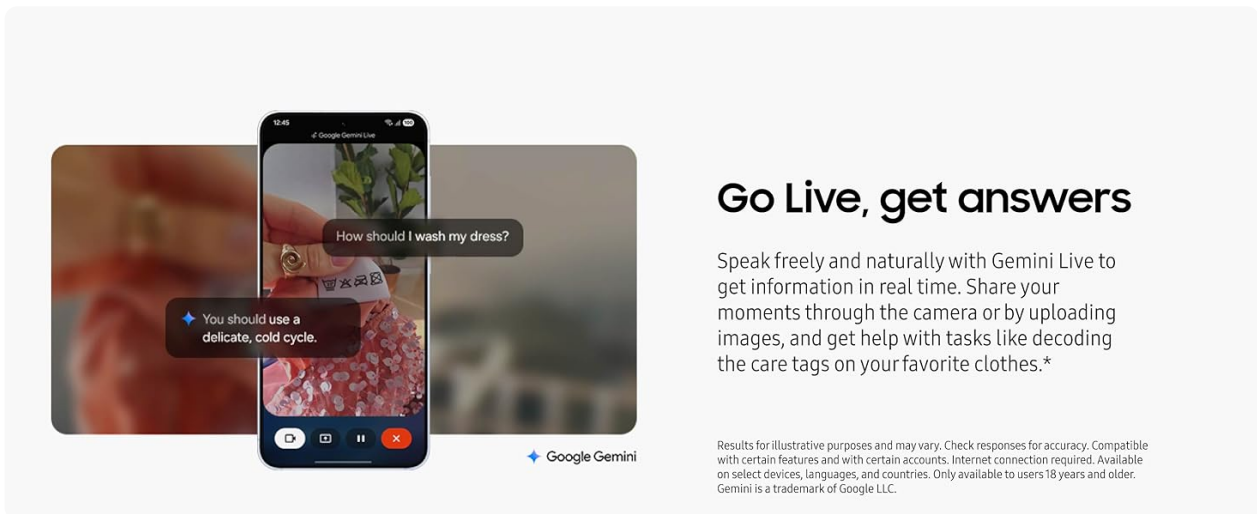


Image: The Samsung Galaxy S25 screen showing a data transfer in progress using the Smart Switch feature, illustrating seamless migration from an old device.

## OPERATING YOUR GALAXY S25

### AI Features

- **Now Brief:** Stay informed with daily select information from your apps, providing insights before you even know you need them.
- **Audio Eraser:** Capture vibrant videos in low light and minimize unwanted background noises for clearer audio.
- **Portrait Selfie:** Enhance your selfies with advanced features that adjust skin tones and preserve natural textures for a polished look.
- **Circle to Search with Google:** Instantly search anything on your screen by simply circling an object with your finger.
- **RCS Messaging:** Send higher-resolution pictures and videos, join group chats, and react to texts across different operating systems.



Image: The Samsung Galaxy S25 screen showing the 'Now Brief' feature, which provides personalized daily insights and information from various applications.



Image: The Samsung Galaxy S25 screen showing the 'Audio Eraser' feature, with a video playing and controls to reduce background noise.

## Camera System

The Galaxy S25 features a versatile camera setup for capturing high-quality photos and videos.

- **Selfie Camera:** 12MP
- **Ultra Wide:** 12MP
- **Wide-angle:** 50MP with 2x Optical Quality Zoom
- **Telephoto:** 10MP with 3x Optical Zoom

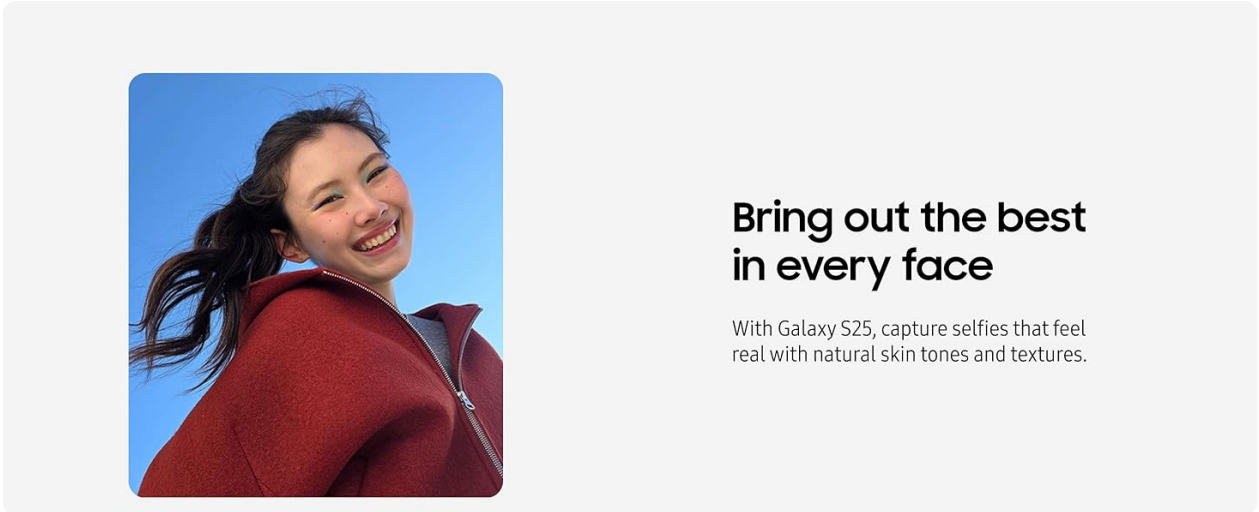


Image: A graphic detailing the camera specifications (12MP Selfie, 12MP Ultra Wide, 50MP Wide-angle, 10MP Telephoto), processor, and 4000mAh battery of the Samsung Galaxy S25.

## Processor and Display

Powered by the Snapdragon 8 Elite Fast Processor, the Galaxy S25 offers smooth performance for all your tasks. The ProScaler Display provides a vibrant and clear viewing experience.

## Battery Life

The 4000mAh battery ensures your Galaxy S25 stays charged, allowing you to remain productive and

entertained throughout your day.

## MAINTENANCE

### Battery Care

- For optimal battery longevity, fully charge your phone to 100% during the initial charge.
- Consider adjusting battery settings to cap charging at 85-95% to extend the overall lifespan of the battery.



Image: A close-up of the Samsung Galaxy S25 screen highlighting the 4000mAh battery capacity, indicating long-lasting power.

## TROUBLESHOOTING

If you encounter any issues with your Samsung Galaxy S25, please refer to the Quick Start Guide included in the box or contact Samsung Customer Support for assistance.

## SPECIFICATIONS

Feature	Detail
Product Dimensions	5.79 x 2.78 x 0.28 inches
Item Weight	5.7 ounces
Item Model Number	SM-S931UZSEXAA
Batteries	1 A batteries required. (included)

OS	Android 15, One UI 7
Connectivity Technologies	Bluetooth, NFC, USB, Wi-Fi
Special Features	Always On Display, Built-In GPS, Fast Charging Support, Water Resistant, Wireless Charging
Human Interface Input	Buttons, Microphone, Touchscreen
Scanner Resolution	1080 x 2340
Other Camera Features	Front, Rear
Audio Jack	USB-C
Form Factor	Bar
Color	Silver Shadow
Battery Power Rating	4000 Milliamp Hours
Phone Talk Time	25 Hours
Manufacturer	Samsung Electronics
Date First Available	January 22, 2025
Memory Storage Capacity	256 GB
Standing Screen Display Size	6.2 Inches
RAM Memory Installed Size	12 GB
Battery Capacity	4000 Milliamp Hours
Weight	5.71 Ounces
Brand	Samsung
Operating System	Android 15, One UI 7
CPU Model	Snapdragon
CPU Speed	3.53, 4.47 GHz
Screen Size	6.2 Inches
Resolution	1080 x 2340
Model Name	Samsung Galaxy S25
Wireless Carrier	Unlocked for All Carriers

# WARRANTY AND SUPPORT

## Warranty Information

Your Samsung Galaxy S25 comes with a 1-year US warranty.

## Protection Plans

Consider enhancing your device protection with:

- Samsung Care+ Device Protection 2 YR
- Samsung Care+ Device Protection Monthly
- Complete Protect: One plan covers all eligible past and future purchases

## Customer Support

Samsung's customer support is available to assist with any questions or issues you may have regarding your device.

---