

Blackview R30Pro

Blackview 2025 Smart Watch User Manual

Model: R30Pro

INTRODUCTION

Thank you for choosing the Blackview 2025 Smart Watch. This manual provides detailed instructions on how to set up, operate, and maintain your new smartwatch. Designed for both men and women, this fitness watch offers comprehensive health monitoring, diverse sports modes, and convenient communication features, including the ability to answer and make calls directly from your wrist.



The Blackview 2025 Smart Watch, featuring a large display with health and activity metrics, alongside a view of its call handling capabilities.

WHAT'S IN THE BOX

Upon unboxing your Blackview 2025 Smart Watch, please ensure all the following items are present:

- 1 x Blackview Smart Watch
- 1 x Silicone Strap
- 1 x Nylon Braided Strap
- 1 x Magnetic Charging Cable
- 1 x Instruction Manual



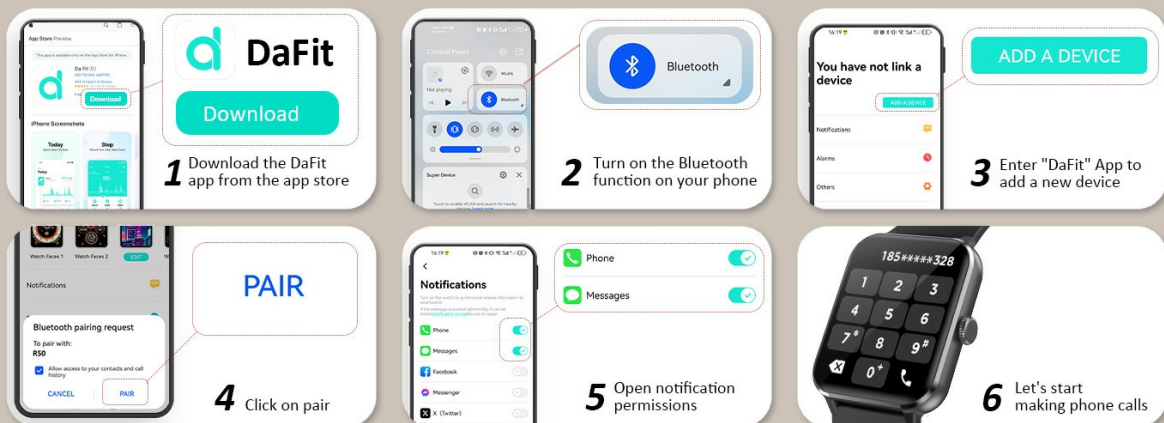
All components included with your Blackview 2025 Smart Watch.

SETUP

To begin using your Blackview 2025 Smart Watch, follow these steps for initial setup and pairing with your smartphone:

- Charge the Smart Watch:** Before first use, fully charge the watch using the provided magnetic charging cable. Connect the cable to a USB power source.
- Download the App:** Scan the QR code in the instruction manual or search for the "Da Fit" app in your smartphone's app store (compatible with Android 6.0 and iOS 9.0 or above).
- Enable Bluetooth:** Turn on Bluetooth on your smartphone.
- Pair the Device:** Open the "Da Fit" app, navigate to the device section, and select "Add a Device." Choose your Blackview 2025 Smart Watch from the list of available devices. Confirm the pairing request on both your phone and the watch.
- Grant Permissions:** Allow the app necessary permissions for notifications, calls, and other features to function correctly.

How to Connect a Watch and Make a Phone Call



Visual guide for connecting your smartwatch and enabling phone call functionality.

OPERATING THE SMART WATCH

Basic Navigation

The Blackview 2025 Smart Watch features a 1.85-inch HD touch screen for easy navigation. Swipe left, right, up, or down to access different menus and functions. The side button typically serves as a power button or a return-to-home button.

1.85" HD Touch Screen



100+ Online Watch Faces



Custom Dial Design

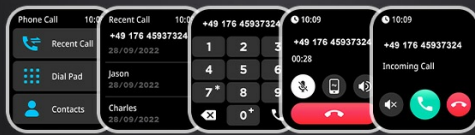
The vibrant 1.85-inch HD touch screen and customizable watch faces.

Answering/Making Calls & AI Voice Assistant

With built-in HiFi stereo speakers and a microphone, you can answer or make calls directly through your watch via Bluetooth. The "Da Fit" app allows you to store multiple contacts for quick dialing. The integrated AI voice assistant can assist with tasks such as checking the weather forecast or setting alarms.

Make/Answer Calls

Simply tap the screen to answer incoming calls and make calls anytime!



Seamlessly make and answer calls directly from your wrist.

Notifications

Receive real-time notifications for incoming calls and messages from various social media applications directly on your watch. This feature keeps you informed without needing to check your phone constantly.

Smart Message Reminders

The smartwatch will remind you of important information from social software such as Facebook, Twitter, Instagram, WhatsApp, etc., which you can explore on the watch.



Stay updated with smart message reminders from your favorite apps.

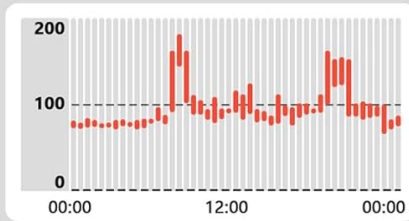
Health Monitoring

The watch uses high-performance optical sensors to provide 24/7 health monitoring:

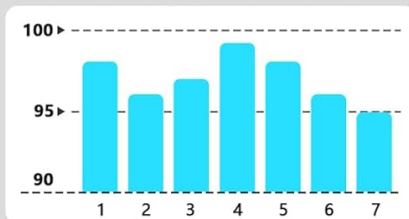
- **Heart Rate:** Monitors dynamic heart rate in real-time. Long-term data is stored in the "Da Fit" app.
- **SpO2:** Intelligent blood oxygen saturation monitoring.
- **Sleep Tracking:** Tracks sleep quality and provides a detailed analysis report to help adjust your sleep patterns.
- **Stress Levels:** Monitors stress levels to help you manage your physical condition.

24/7 Health Monitoring

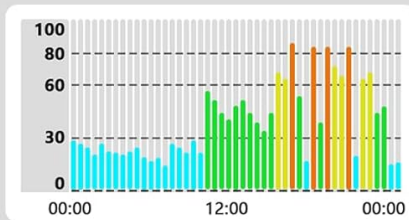
Heart Rate



Blood Oxygen



Stress



Visual representation of the watch's 24/7 health monitoring capabilities.

Sports Modes

Track your daily activity with over 100 sports modes, including running, cycling, yoga, and football. Connect to GPS through the "Da Fit" app to record your training routes and fitness progress.

100+ Sports Modes



Calories



Steps

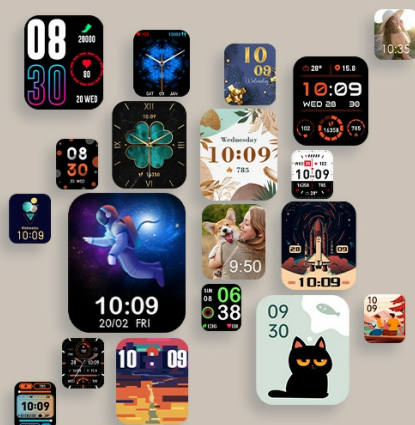


Distance

Explore over 100 sports modes to track your fitness journey.

Customization

Personalize your watch face with your favorite photos or choose from over 100 online watch face options. The watch comes with two interchangeable straps: a silicone strap and a nylon braided strap, allowing you to match your style for any occasion.



Over 100 beautifully designed watch faces



Choose from over 100 beautifully designed watch faces to personalize your device.

More Smart Tools

The Blackview 2025 Smart Watch offers a variety of other useful daily functions:

- Music Control
- Camera Control
- Casual Games
- Weather Forecast
- Sedentary Reminders
- Alarm Clock
- Stopwatch
- Timer
- Menstrual Cycle Tracking

More Features to Discover

Many convenient functions and practice on your wrist



- Calculator
- Music control
- Voice Assistant
- Menstrual cycle
- Weather forecast
- Game
- Alarm clock

Discover more convenient functions and practices on your wrist.

Official Product Video

Your browser does not support the video tag.

An official video from the seller demonstrating various features and capabilities of the Blackview smartwatch.

MAINTENANCE

To ensure the longevity and optimal performance of your Blackview 2025 Smart Watch, follow these maintenance guidelines:

- **Cleaning:** Regularly wipe the watch screen and straps with a soft, dry cloth. For stubborn stains, a slightly damp cloth can be used, but ensure the watch is completely dry afterward.
- **Water Resistance:** The watch is IP68 waterproof, meaning it is resistant to dust and can withstand immersion in water up to 1.5 meters for 30 minutes. It is suitable for daily use, hand washing, and light rain. However, it is not recommended for hot showers, saunas, or diving, as steam and high temperatures can compromise the seals.

- **Charging:** Use only the provided magnetic charging cable. Avoid using damaged cables or chargers.
- **Storage:** Store the watch in a cool, dry place away from direct sunlight and extreme temperatures.
- **Avoid Chemicals:** Do not expose the watch to strong chemicals, detergents, or solvents, as these can damage the materials.

TROUBLESHOOTING

If you encounter any issues with your Blackview 2025 Smart Watch, please refer to the following common solutions:

Problem	Possible Solution
Watch not turning on	Ensure the watch is fully charged. Connect it to the magnetic charging cable and a power source for at least 30 minutes.
Cannot pair with phone	Ensure Bluetooth is enabled on your phone and the watch. Restart both devices. Make sure the "Da Fit" app is updated to the latest version. Try forgetting the device in your phone's Bluetooth settings and re-pairing.
Notifications not received	Check app permissions in your phone settings to ensure "Da Fit" has access to notifications. Verify that notifications are enabled within the "Da Fit" app for specific applications. Ensure the watch is connected via Bluetooth.
Inaccurate health data	Ensure the watch is worn snugly on your wrist, not too tight or too loose. Clean the sensors on the back of the watch. Avoid excessive movement during measurements.
Short battery life	Reduce screen brightness. Turn off continuous heart rate monitoring if not needed 24/7. Limit background app refresh. Ensure no apps are running excessively in the background on your phone.

If the problem persists after trying these solutions, please contact Blackview customer support for further assistance.

SPECIFICATIONS

- **Model:** R30Pro
- **Display:** 1.85-inch HD Touch Screen
- **Dimensions:** 7.17 x 3.39 x 0.75 inches
- **Item Weight:** 3.52 ounces
- **Battery:** 350mAh Lithium Metal (included)
- **Battery Life:** Up to 7 days of use, approximately 30 days standby
- **Charging Time:** Approximately 2 hours
- **Water Resistance:** IP68

- **Compatibility:** Android 6.0 and iOS 9.0 or above
- **Connectivity:** Bluetooth
- **Manufacturer:** Blackview
- **Country of Origin:** China



Long Duration
Battery



iOS and Android
Compatible

Key dimensions and compatibility information for the Blackview Smart Watch.

WARRANTY AND SUPPORT

Blackview provides a **2-year warranty** for your smartwatch. Additionally, **24/7 lifetime technical support** is available to ensure a hassle-free experience. Should you encounter any problems or have questions regarding your device, please do not hesitate to reach out to Blackview customer support.

For support, please visit the official Blackview store or contact their customer service channels as indicated on the product packaging or official website.

[Visit the Official Blackview Store](#)

