

TYMO HC305G

TYMO STYLUX Thermal Brush User Manual

Model: HC305G

INTRODUCTION

The TYMO STYLUX Thermal Brush is a versatile 2-in-1 heated round brush designed to simplify your hair styling routine. It combines the functions of a straightener and a curler, allowing you to achieve various looks including sleek straight hair, voluminous blowouts, and relaxed curls. Featuring Flexi-Fit Technology, dual PTC heating elements for rapid and stable heat, and dual voltage for worldwide use, this tool is engineered for efficient and gentle styling.



Image: The TYMO STYLUX Thermal Brush in gold, showcasing its round barrel and handle with power button.

IMPORTANT SAFETY INFORMATION

Please read all safety instructions before use to prevent injury or damage.

- Use only for styling, not as a hair dryer.
- Keep out of reach of children.
- Do not submerge in water.
- Allow the brush to cool before storing.
- Always unplug the brush when not in use.

The device operates at 88 watts and supports 240 volts of alternating current.

PRODUCT FEATURES

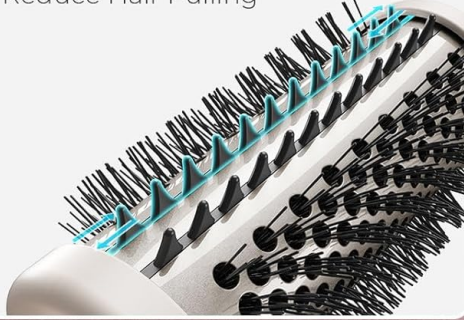
- **Flexi-Fit Technology:** 1.7-inch thermal brush with adjustable nylon bristles to minimize hair pulling and ensure smooth gliding. The staggered bristle design optimizes heat distribution.

Flexi-Fit™ TECHNOLOGY

Grip but never tangle

Wide Sliding Bristles

Reduce Hair Pulling



Densely Packed Bristles

Enhance Stronger Grip

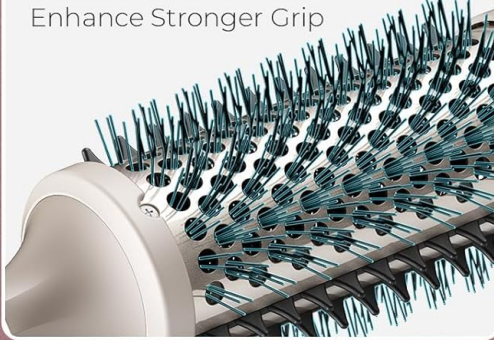


Image: Close-up view of the Flexi-Fit bristles, showing wide sliding bristles for reduced pulling and densely packed bristles for stronger grip.

- **Effortless Volume & Instant Blowout:** Achieve bouncy blowouts with a single stroke. Lightweight (0.49 lbs) and dual voltage (100V-240V) for global use.
- **Frizz-Free & Enhanced Shine:** Features a T-Gloss keratin coating to reduce cuticle damage and add shine. 360° swivel cord for easy maneuverability.
- **Damage Worry-Free:** Dual PTC heating elements for 20-second fast heat-up and precise, stable temperature control. Heated hard bristles maintain consistent barrel temperature. Includes a temperature memory function.

DAMAGE WORRY-FREE

Double PTC Heating Deliver Even Heat,
Ensuring Superior Hair Care



Image: Diagram illustrating the internal dual PTC heating elements that deliver even heat for superior hair care.

- **Multiple Looks:** Straightens, creates loose curls, and adds volume. 3-level temperature adjustment suitable for hair types ranging from 2A to 4A.

SETUP

1. **Unpack:** Carefully remove the TYMO STYLUX Thermal Brush from its packaging. Ensure all components are present.
2. **Plug In:** Connect the power cord to a suitable electrical outlet. The brush supports dual voltage (100V-240V) for international use.
3. **Power On & Select Temperature:** Long press the power button for 2 seconds to turn on the device. The indicator light will illuminate. Press the power button briefly to cycle through the 3 temperature settings:
 - White light: 160°C / 320°F
 - Yellow light: 180°C / 360°F
 - Orange light: 200°C / 395°F

The indicator light will stop flashing once the set temperature is reached. The device heats up in approximately 20 seconds.

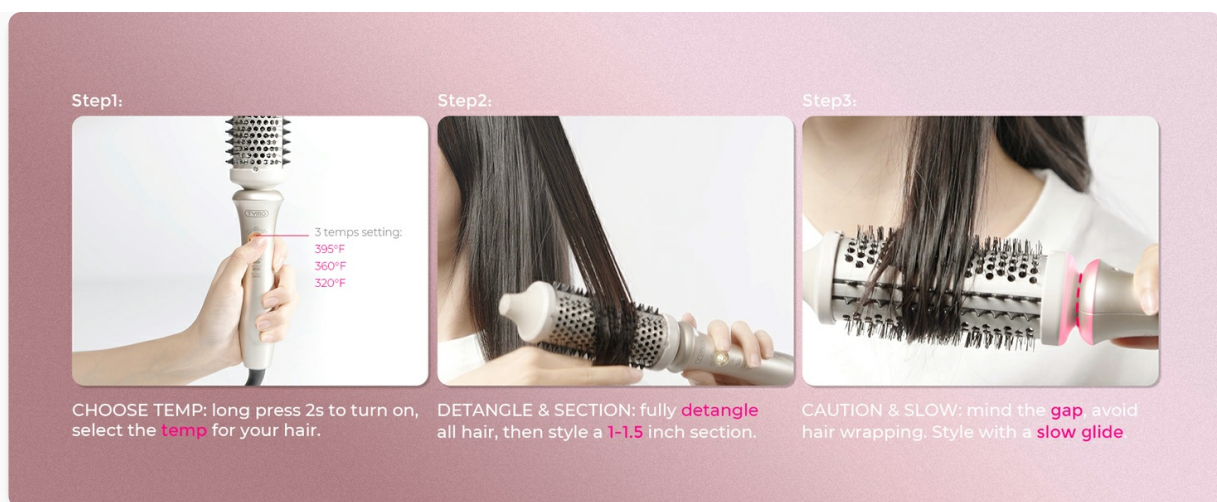


Image: Diagram illustrating the three temperature settings (320°F, 360°F, 395°F) and how to switch them by long-pressing the power button.

OPERATING INSTRUCTIONS

The TYMO STYLUX Thermal Brush is designed for use on dry hair. Ensure your hair is fully detangled before styling.

General Styling Steps:

1. **Prepare Hair:** Ensure hair is completely dry and detangled. Section your hair into manageable 1-1.5 inch sections.
2. **Choose Temperature:** Select the appropriate temperature setting for your hair type (refer to Setup section).
3. **Style Slowly:** Glide the brush through each section of hair slowly. Avoid wrapping hair too tightly around the barrel to prevent tangling.

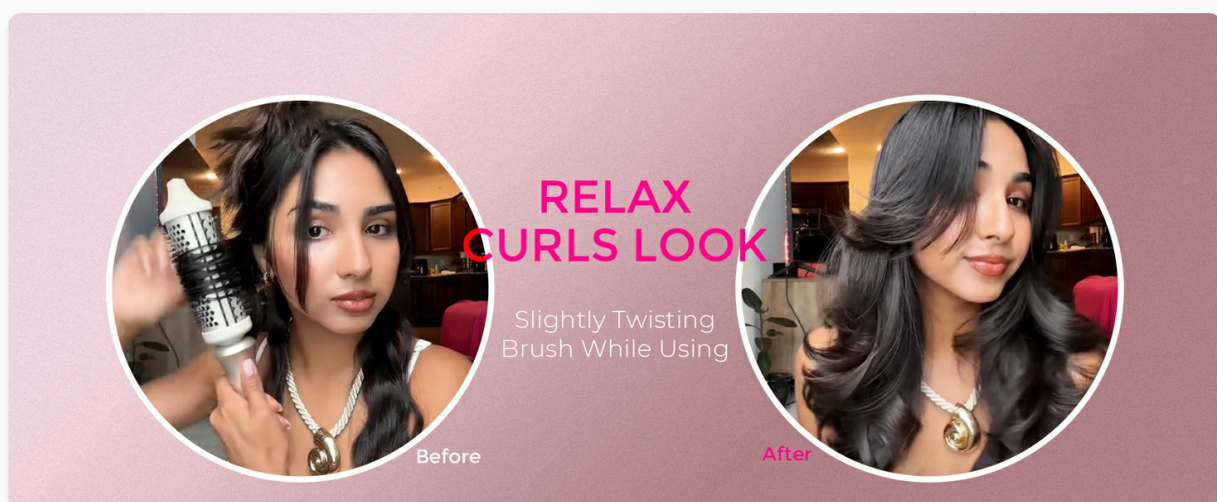


Image: Visual guide showing three steps for styling: choosing temperature, detangling and sectioning hair, and slow gliding of the brush.

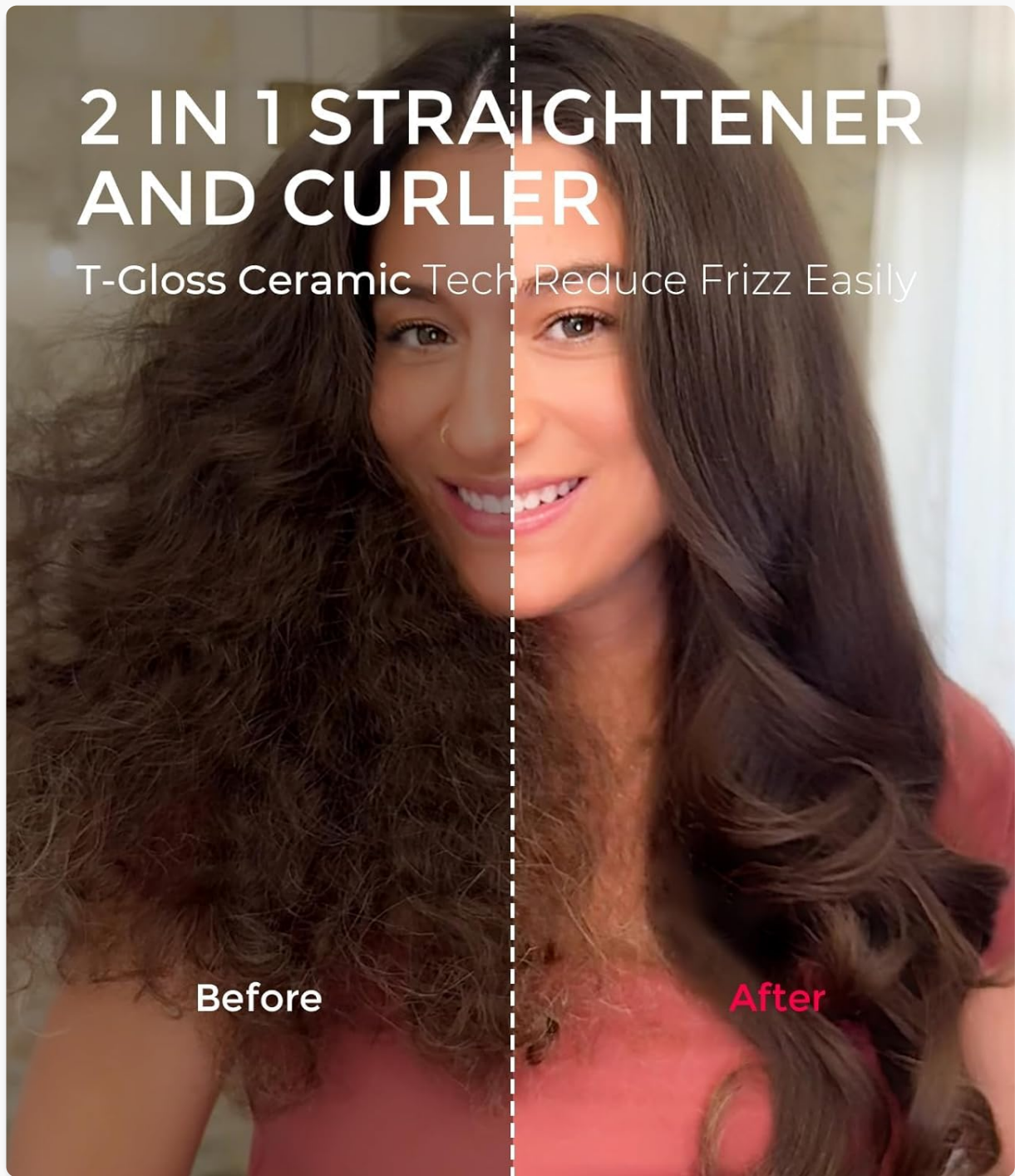
Achieving Different Looks:

For Silky Straight Hair:

Pass the brush slowly through sections of hair from root to tip, ensuring the hair is fully engaged with the bristles. Repeat until desired straightness is achieved.

2 IN 1 STRAIGHTENER AND CURLER

T-Gloss Ceramic Tech Reduce Frizz Easily



Before

After

Image: A split image showing hair before and after using the TYMO STYLUX Thermal Brush for straightening, demonstrating reduced frizz and added shine.



Before

**FRESH BLOWOUT
LOOK**

Voluminous Hair &
Add Shine



After

Image: Before and after comparison of hair styled into a silky straight look using the thermal brush.

For Voluminous Blowouts:

For added volume, lift sections of hair at the root and slowly glide the brush upwards and outwards. You can also roll the brush under sections of hair and hold for a few seconds before releasing.

ONE STEP BOUNCY VOLUME

No air volumizing

Forget complex wet-to-dry skill



Image: A split image demonstrating the process of creating bouncy volume, showing the brush in use and the resulting voluminous hair.

ONE TOOL, MULTIPLE LOOKS



Image: Before and after comparison of hair styled into a fresh blowout look using the thermal brush, highlighting added volume and shine.

For Loose Curls:

Wrap a section of hair around the barrel, slightly twisting the brush as you pull it through. For more defined curls, hold the hair wrapped around the barrel for a few seconds before gently releasing.

90S' MODEL STYLE

1.7 Inch Thermal Brush
Twist to achieve natural curls



Image: Before and after images showing how to achieve a '90s model style' with natural curls using the 1.7-inch thermal brush.

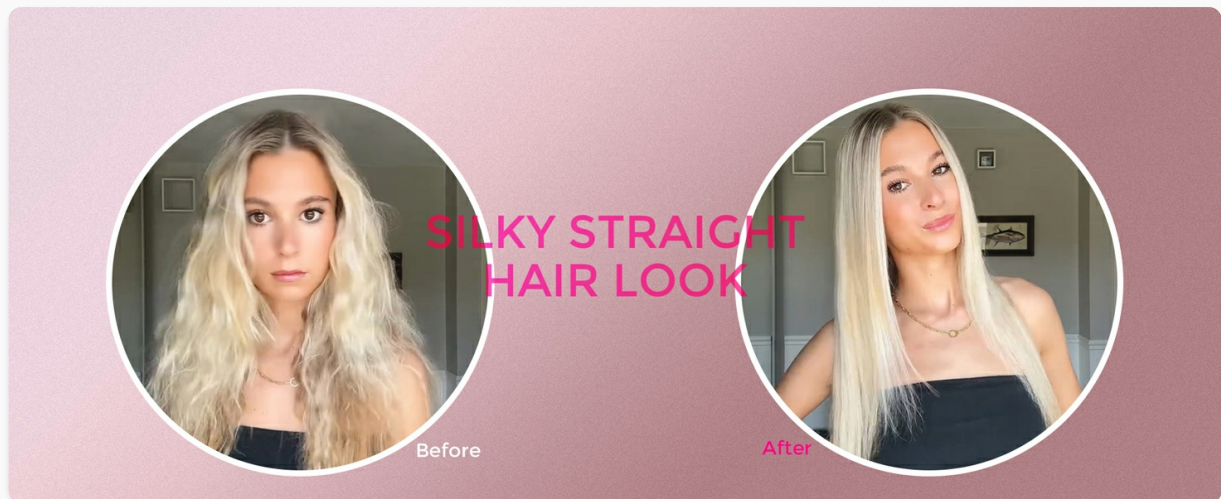


Image: Before and after comparison of hair styled into relaxed curls by slightly twisting the brush while using.

Official Product Videos:

10mins fast loose curls!

Your browser does not support the video tag.

This video demonstrates how to quickly achieve loose curls using the TYMO STYLUX Thermal Brush in approximately 10 minutes. It showcases the ease of use and the final curly hairstyle.

One-step baddie blowout look

Your browser does not support the video tag.

This video illustrates how to create a voluminous, "baddie blowout" look with just one step using the thermal brush, highlighting its efficiency for a full-bodied style.

How to get shiny blowout look?

Your browser does not support the video tag.

This video provides a tutorial on achieving a shiny blowout look, demonstrating techniques to maximize the brush's effect for a smooth and lustrous finish.

MAINTENANCE

- **Cleaning:** Ensure the device is unplugged and completely cool before cleaning. Use a soft, damp cloth to wipe down the barrel and handle. Remove any trapped hair from the bristles using a fine-tooth comb or brush cleaner. Do not use harsh chemicals or abrasive cleaners.
- **Storage:** Store the thermal brush in a cool, dry place, away from direct sunlight and moisture. Ensure the cord is not wrapped tightly around the device, as this can cause damage over time. The brush is equipped with a 30-minute auto shut-off feature for safety.

TROUBLESHOOTING

Problem	Possible Cause	Solution
Device does not turn on.	Not properly plugged in; Power button not pressed correctly.	Ensure the brush is securely plugged into a working outlet. Long press the power button for 2 seconds to turn it on. A quick press will cycle temperatures.
Hair feels frizzy after styling.	Hair not fully dry; Incorrect temperature setting; Styling too quickly.	Ensure hair is completely dry before use. Adjust temperature to a lower setting if hair is fine or damaged. Glide the brush through hair slowly and evenly.
Hair gets tangled in bristles.	Sections too large; Hair not detangled; Improper technique.	Work with smaller, manageable sections of hair (1-1.5 inches). Ensure hair is fully detangled before styling. Avoid wrapping hair too tightly around the barrel.
Brush not heating sufficiently.	Incorrect temperature setting; Device not fully heated.	Check the indicator light to confirm the desired temperature setting. Wait for the light to stop flashing, indicating the brush has reached its set temperature.

SPECIFICATIONS

- **Model Number:** HC305G
- **Product Dimensions:** 2.2 x 2.2 x 12.28 inches
- **Item Weight:** 12.7 ounces (approx. 0.79 lbs)
- **Brand:** TYMO
- **Color:** Gold
- **Material:** Plastic
- **Wattage:** 88 watts
- **Power Source:** Corded Electric
- **Voltage:** Dual Voltage (100V-240V)
- **Auto Shut-off:** 30 minutes
- **Heat-up Time:** 20 seconds
- **Temperature Settings:** 3 levels (320°F, 360°F, 395°F)







WARRANTY INFORMATION

For detailed warranty information regarding your TYMO STYLUX Thermal Brush, please refer to the warranty card included with your product packaging or visit the official TYMO website. Warranty terms and conditions may vary by region and retailer.

CUSTOMER SUPPORT

If you have any questions, concerns, or require technical assistance with your TYMO STYLUX Thermal Brush, please contact TYMO customer support through their official website or the contact information provided in your product documentation. You can also visit the [TYMO Store on Amazon](#) for more information and product updates.

Related Documents - HC305G

	<p>TYMO Hair Straightener Brush FAQ and Usage Guide</p> <p>Frequently asked questions and usage instructions for the TYMO hair straightening brush, covering topics like hair types, temperature settings, cleaning, and guarantees.</p>
	<p>How to Use TYMO Hair Straightener Brush: Step-by-Step Guide</p> <p>Learn how to effectively use the TYMO Hair Straightener Brush with this concise, step-by-step guide. Achieve frizz-free, silky hair with easy-to-follow instructions for optimal results.</p>
	<p>TYMO STYLUX PRO Thermal Brush User Manual and Safety Guide</p> <p>Comprehensive user manual for the TYMO STYLUX PRO Thermal Brush, covering safety instructions, usage guides, styling tips, specifications, and maintenance. Learn how to achieve professional hairstyles at home.</p>
	<p>TYMO Hair Straightener Brush: Frequently Asked Questions</p> <p>Answers to common questions about the TYMO hair straightener brush, covering usage, suitability for different hair types, safety, cleaning, and warranty.</p>
	<p>TYMO STYLUX Thermal Brush User Manual and Styling Guide</p> <p>Comprehensive user manual for the TYMO STYLUX Thermal Brush, including safety instructions, operating guide, styling tips, and specifications for achieving professional hair results at home.</p>
	<p>TYMO Volumizer HC300 Hot Air Brush User Manual Styling Guide</p> <p>Comprehensive user manual for the TYMO Volumizer HC300 hot air brush. Discover features, operating instructions, styling tips, maintenance advice, safety guidelines, and warranty information for achieving smooth, voluminous, and shiny hair.</p>