



[Manuals.plus](#) /

> [GIANTEX](#) /

> GIANTEX Kitchen Pantry Cabinet User Manual - Model KY43754FR

GIANTEX KY43754FR

GIANTEX Kitchen Pantry Cabinet User Manual

Model: KY43754FR

INTRODUCTION

Thank you for choosing the GIANTEX Kitchen Pantry Cabinet. This manual provides essential information for the safe assembly, operation, and maintenance of your new cabinet. Please read it thoroughly before assembly and retain it for future reference.

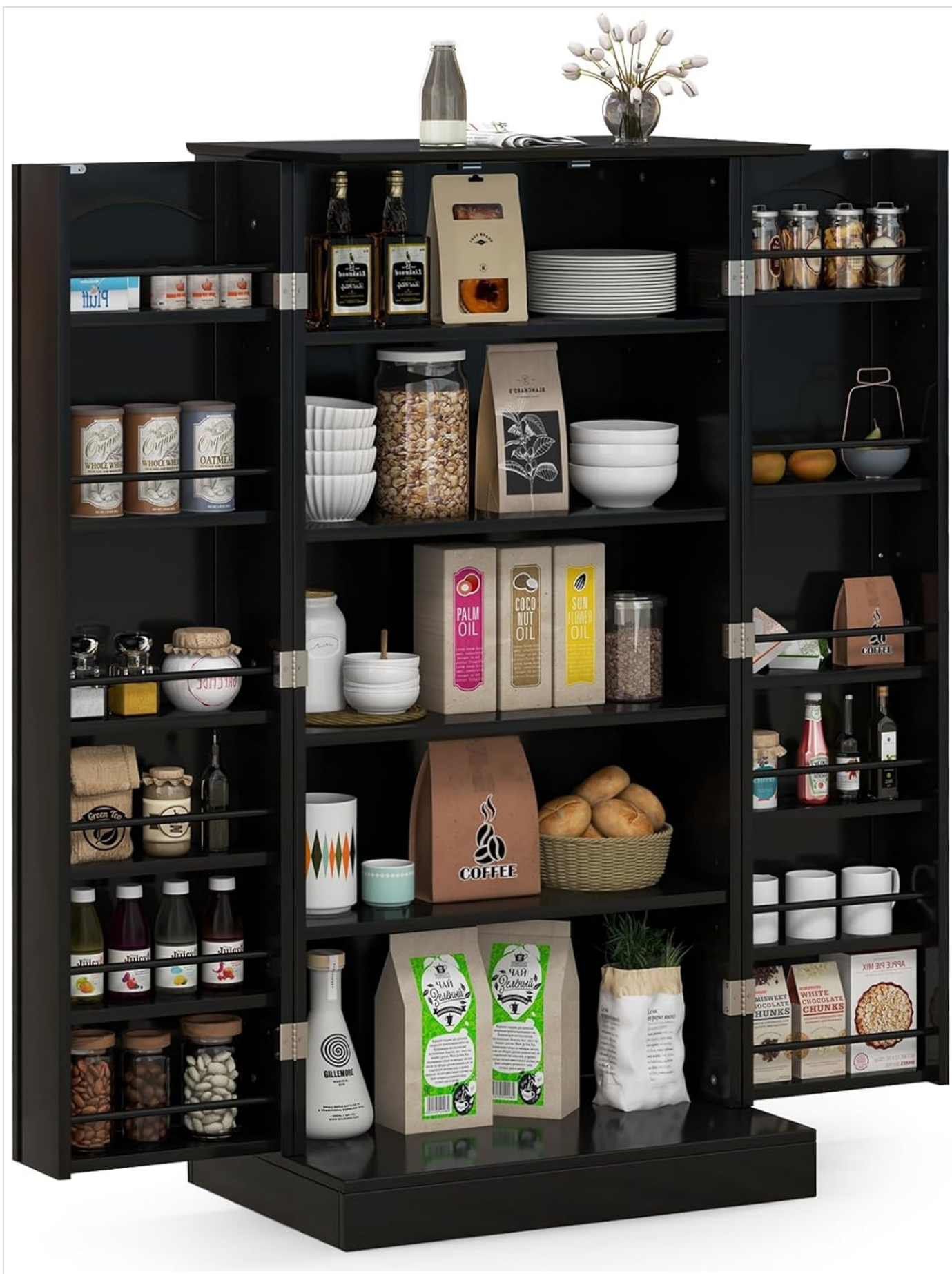


Image: The GIANTEX Kitchen Pantry Cabinet shown open, revealing multiple shelves filled with food items, dishes, and small appliances. The cabinet is black with two doors and a stable base.

SAFETY INFORMATION

WARNING: To prevent serious injury, always follow these safety guidelines:

- Ensure the cabinet is mounted securely to the wall using the provided anti-tip device to prevent tipping.
- Do not allow children to climb on or play with the cabinet.
- Place the cabinet on a flat, stable surface.
- Do not overload shelves. Refer to specifications for maximum load capacity.



Image: A diagram illustrating the 'Costruzione affidabile' (Reliable Construction) of the cabinet, highlighting the anti-tip kit for wall attachment and the reinforced base for stability.

PACKAGE CONTENTS

Before assembly, verify that all parts are present and undamaged. Refer to the included assembly instructions for a detailed list of components and hardware.

- Cabinet panels (top, bottom, sides, back, doors)
- Adjustable shelves
- Metal handles
- Hinges and magnetic catches
- Anti-tip device
- Assembly hardware (screws, dowels, etc.)
- Assembly manual

ASSEMBLY INSTRUCTIONS (SETUP)

Assembly requires two people. Follow the step-by-step instructions provided in the separate assembly manual included with your product. Ensure all connections are secure before use.

1. Unpack all components and verify against the parts list.
2. Assemble the main frame of the cabinet according to the diagrams.
3. Install the adjustable shelf supports and shelves.
4. Attach the doors, handles, and magnetic catches.
5. Secure the anti-tip device to the back of the cabinet and to a wall stud.

PRODUCT FEATURES AND USAGE (OPERATING)

The GIANTEX Kitchen Pantry Cabinet is designed for versatile storage in various rooms.

Optimized Storage Space

This cabinet features a spacious top surface, 5 central shelves, and 12 side shelves, providing ample room for appliances, dishes, utensils, spices, and bottles. The design maximizes storage efficiency.



Image: A graphic titled 'Large Storage Space' showing the cabinet's interior with 3 distinct storage areas and a total of 17 shelves, emphasizing its ample capacity for various items.

Adjustable Shelves

Six of the shelves are adjustable, allowing you to customize the storage space to accommodate items of different heights. Metal side bars on the shelves prevent items from falling.



Image: A visual representation of the cabinet's '6 Ripiani regolabili con 3 altezze opzionali' (6 adjustable shelves with 3 optional heights), demonstrating how shelves can be repositioned to fit various items like wine bottles, cans, glasses, and small appliances.

Functional Details

The cabinet features premium metal handles for easy opening and closing, robust hinges, and a magnetic catch system to keep the doors securely shut. The expanded base provides enhanced stability.



Image: Detailed close-up views of the cabinet's premium metal handles, the magnetic catch mechanism that secures the doors, and the stable widened base, illustrating key functional components.

CARE AND MAINTENANCE

- **Cleaning:** Wipe surfaces with a soft, damp cloth. Avoid abrasive cleaners or harsh chemicals that may damage the finish.
- **Dusting:** Regularly dust with a dry, soft cloth.
- **Spills:** Clean spills immediately to prevent staining or damage to the material.
- **Inspection:** Periodically check all screws and connections to ensure they remain tight. Retighten if necessary.
- **Anti-Tip Device:** Verify the anti-tip device remains securely attached to both the cabinet and the wall.

TROUBLESHOOTING

Problem	Possible Cause	Solution
---------	----------------	----------

Problem	Possible Cause	Solution
Cabinet feels unstable or wobbly.	Not placed on a level surface; anti-tip device not installed or loose; screws not tightened.	Ensure the cabinet is on a level floor. Install or re-secure the anti-tip device to the wall. Check and tighten all assembly screws.
Doors do not close properly.	Hinges are loose or misaligned; magnetic catch is not aligned.	Adjust hinges to align doors. Check and adjust the position of the magnetic catch.
Shelves are difficult to adjust.	Items on shelves; shelf pins are stuck.	Remove all items from the shelf before attempting to adjust. Gently wiggle shelf pins to free them.

SPECIFICATIONS

Feature	Detail
Brand	GIANTEX
Model	KY43754FR
Color	Black
Product Dimensions (L x W x H)	60 x 40 x 120 cm (approximately 23.6 x 15.7 x 47.2 inches)
Item Weight	27.5 kg (approximately 60.6 lbs)
Maximum Load Capacity	100 kg (approximately 220 lbs)
Special Features	Adjustable shelves, anti-fall bars, anti-tip device

Dimension

Weight Capacity : 100 KG

Internal

External

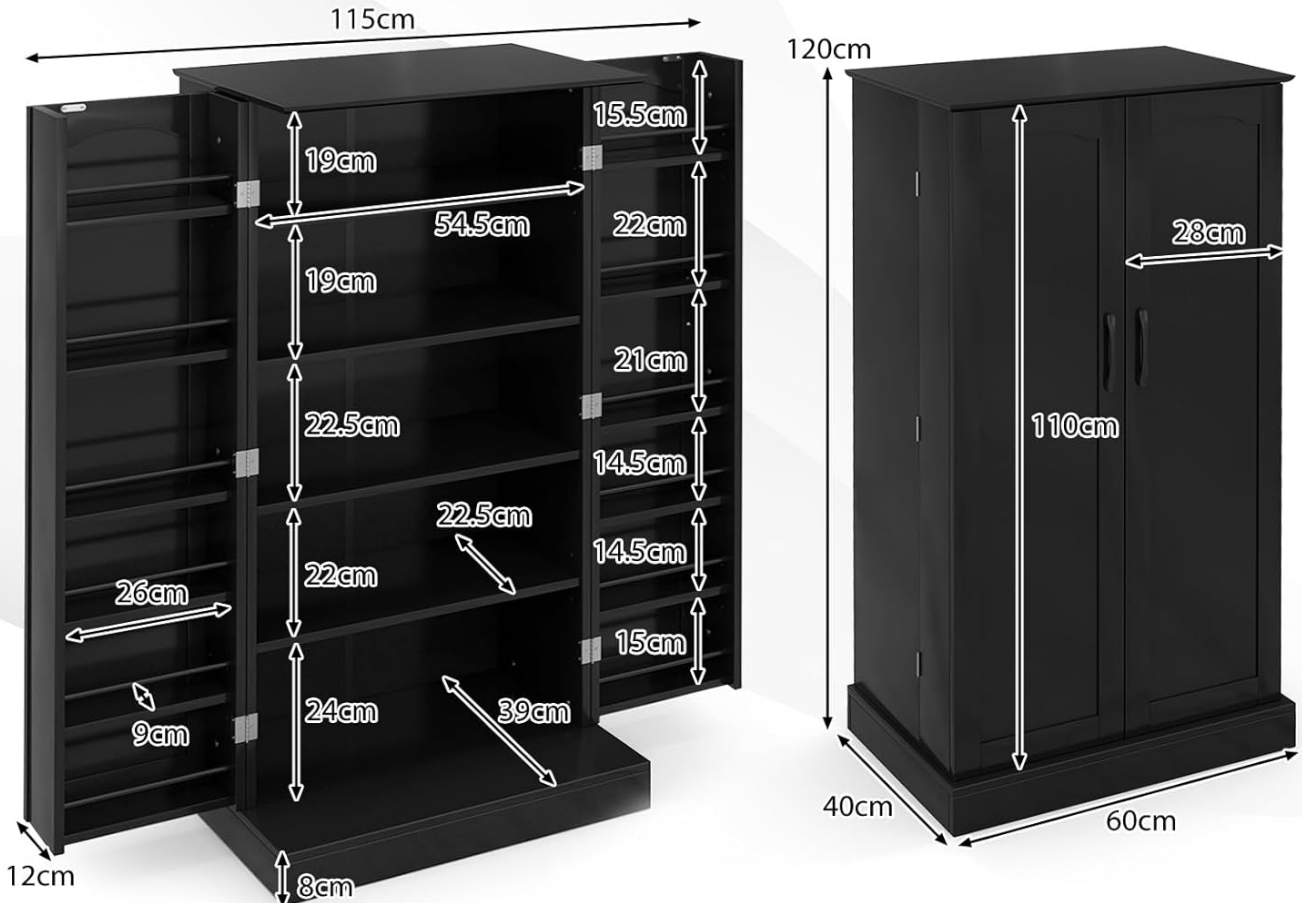


Image: A detailed dimension diagram of the cabinet, illustrating both internal and external measurements in centimeters, along with the total weight capacity of 100 kg.

WARRANTY AND SUPPORT

For warranty information or technical support, please refer to the contact details provided with your purchase documentation or visit the official GIANTEX website. Keep your proof of purchase for warranty claims.