

LEIVI LEIVI B01

LEIVI B01 Smart Bidet Toilet Seat with Portable Travel Bidet

User Manual

INTRODUCTION

This manual provides detailed instructions for the installation, operation, and maintenance of your LEIVI B01 Smart Bidet Toilet Seat and Portable Travel Bidet. Please read this manual thoroughly before use to ensure proper function and safety. Keep this manual for future reference.

PRODUCT FEATURES

The LEIVI B01 system combines a smart bidet toilet seat with a portable travel bidet, offering comprehensive personal hygiene solutions.

Smart Bidet Toilet Seat Features:

- **Ergonomic Heated Seat:** Provides comfort with 4 adjustable temperature levels.
- **Warm Air Dry:** Offers a gentle drying experience with 6 adjustable air temperature levels.
- **Instant Warm Water:** Delivers warm water instantly with 6 adjustable water temperature levels.
- **Multiple Wash Modes:** Includes Strong Wash, Pulsating Wash, Soft Wash, Rear Wash, Front Wash, and Oscillating Wash for a customized cleaning experience.
- **User-Friendly Side Control:** Conveniently adjust warm air dry, posterior/feminine wash, and nozzle position directly from the side panel.

VARIOUS PRACTICAL FEATURES

Ergonomic Heated Seat

Seat temperature
4 levels adjustable



Warm Air Dry

Warm air temperature
6 levels adjustable



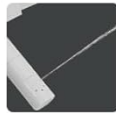
Strong Wash



Pulsating Wash



Soft Wash



Instant Warm Water

Warm water temperature
6 levels adjustable



Rear wash



Front wash



Oscillating Wash



Multiple Wash Modes

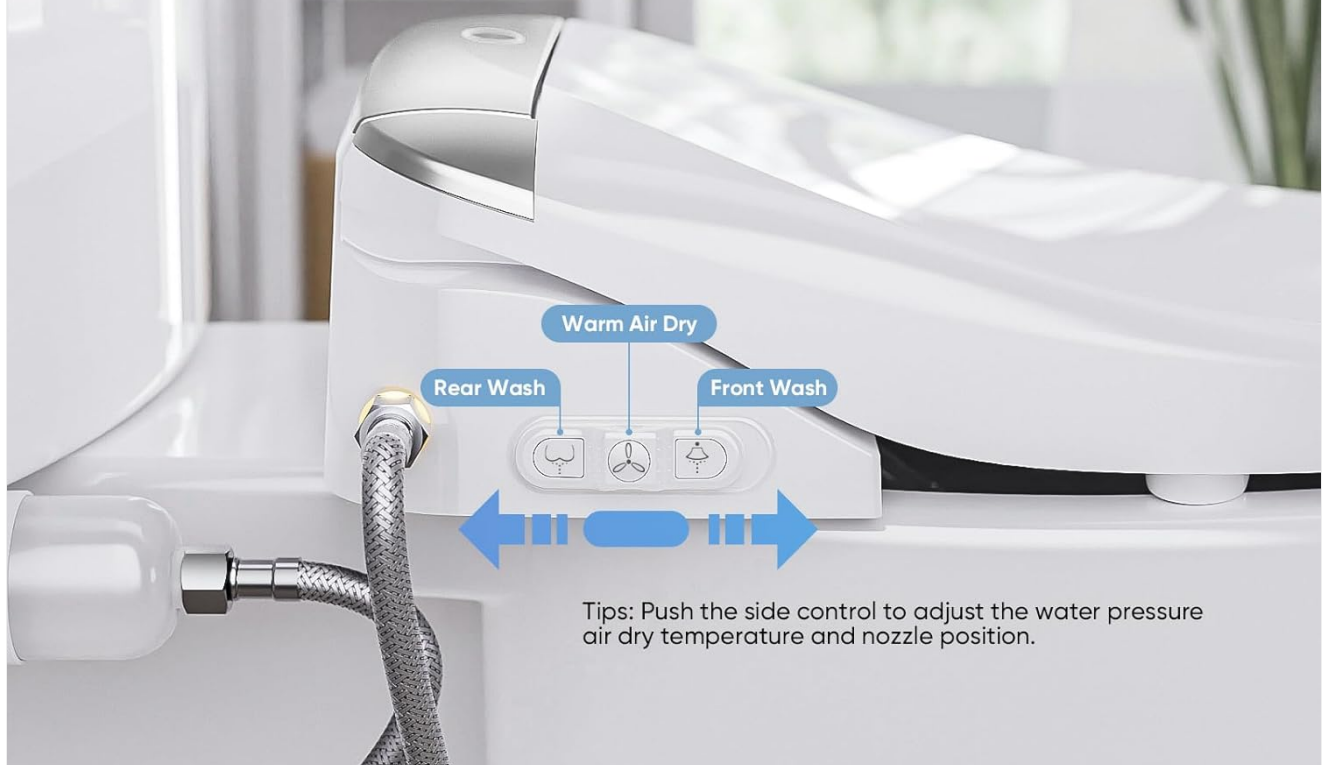
Providing a new and enjoyable wash experience



Image: Overview of the smart bidet toilet seat's key features, such as adjustable heated seat, warm air dryer, instant warm water, and various wash modes.

USER FRIENDLY SIDE CONTROL

Warm Air Dry, Posterior/Feminine Wash, Nozzle Position adjustment, various functions can be switched at will by the side control



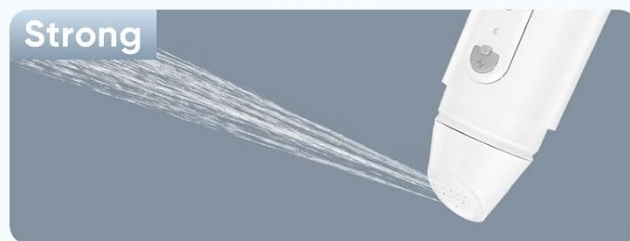
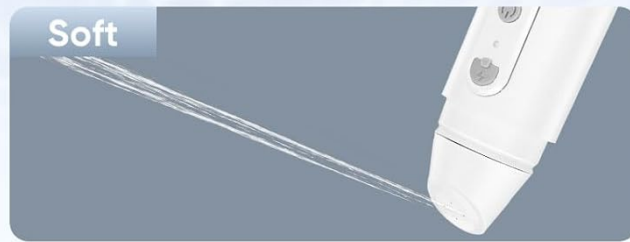
Tips: Push the side control to adjust the water pressure, air dry temperature, and nozzle position.

Image: Detail of the user-friendly side control panel on the bidet seat, highlighting controls for wash functions and adjustments.

Portable Travel Bidet Features:

- **3 Flushing Modes:** Soft, Pulse, and Strong modes for diverse cleaning needs.
- **Universal USB Charging:** Equipped with a 500mAh battery, rechargeable via laptop USB ports, mobile phone chargers, car USB chargers, or USB power banks. (Note: Not compatible with fast charging; use slow charge).
- **IPX7 Waterproof:** Designed for worry-free cleansing and safe use in humid environments.
- **Wide Application:** Ideal for travel, baby care, postpartum hygiene, and general personal hygiene.

3 Flushing Modes Meet Your Diverse Need



Tips:

- Suitable for addressing a variety of bottom-related issues.
- Press the single function button to easily switch between three flushing modes: Soft, Pulse, and Strong.



Image: Illustration of the portable bidet's three flushing modes: Soft, Pulse, and Strong, with a focus on the function button.

PLEASE CONFIRM YOUR TOILET SIZE BEFORE PLACING ORDER!

ELONGATED



Fits

ROUND



May Not Fit



Outlet Required

Image: Details on the universal USB charging capability of the portable bidet, showing various compatible charging sources.

Universal USB Charging Cable

Equipped with a 500mAh battery

Laptop USB Charging Ports

Mobile Phone Charger

Car USB Charger

USB Power Bank

Note: Not compatible with fast charging!

Image: Visual representation of the portable bidet's IPX7 waterproof rating, emphasizing its durability and safety in wet conditions.



Image: Examples of the portable bidet's wide range of applications, including travel, baby care, postpartum recovery, and general personal hygiene.

SETUP AND INSTALLATION

Toilet Compatibility Check:

Before installation, confirm your toilet size. The LEIVI B01 Smart Bidet Toilet Seat is designed for both elongated and round toilets. Ensure you have an electrical outlet nearby.

IPX7 Waterproof

Worry-free cleansing



Safe and convenient to use in humid environments



Water washing



Safety using

Note :

**Not compatible with fast charging.
Please use slow charge on it!**

Image: Guide for confirming toilet size (elongated vs. round) and the necessity of an electrical outlet for the bidet seat installation.

Smart Bidet Toilet Seat Installation Steps:

Important: Before starting, turn off the water supply valve to your toilet and empty the toilet tank by flushing the toilet.

1. **Remove your current toilet seat:** Unscrew and remove the existing toilet seat and lid.
2. **Install the bidet seat base plate:** Position the mounting plate over the toilet bowl holes and secure it.
3. **Slide the bidet seat onto the base plate:** Align the bidet seat with the installed base plate and slide it into place until it clicks. A quick release button allows for easy removal.
4. **Connect the T-adapter to the fill valve inlet:** Install the T-adapter to the water supply line connected to your toilet's fill valve.
5. **Connect the filter, bidet seat hose, and water supply hose:** Attach the water filter, then connect the bidet seat's water hose to the T-adapter, and finally, reconnect your toilet's water supply hose.

FAST & EASY INSTALLATION

1. Remove your current seat.

2. Install the bidet seat base plate.

3. Slide the bidet seat onto the base plate. A quick release button allows for easy removal.

4. Connect the T adapter to fill valve inlet.

5. Connect the filter, bidet seat hose and the water supply hose.

Tips: Before installation, please turn off the water supply valve and empty the toilet tank by flushing the toilet.

Image: Visual guide detailing the five steps for fast and easy installation of the smart bidet toilet seat.

Portable Travel Bidet Setup:

1. **Charge the device:** Before first use, fully charge the portable bidet using the provided USB cable. Connect it to a compatible USB power source.
2. **Fill with water:** Unscrew the bottom reservoir and fill it with clean water. Reattach securely.

OPERATING INSTRUCTIONS

Smart Bidet Toilet Seat Operation:

- **Power On/Off:** The unit is typically in standby mode when plugged in.
- **Heated Seat:** Use the remote control or side panel to adjust the seat temperature through 4 levels.
- **Wash Functions:**
 - **Rear Wash:** For posterior cleansing.
 - **Front Wash (Feminine Wash):** For feminine cleansing.

- **Oscillating Wash:** Moves the nozzle back and forth for a wider cleaning area.
- **Strong/Pulsating/Soft Wash:** Select desired water pressure and spray pattern.

Adjust water temperature (6 levels) and nozzle position using the controls.

- **Warm Air Dry:** After washing, activate the warm air dryer. Adjust the air temperature through 6 levels for comfort.
- **Stop Function:** Press the "Stop" button on the remote or side panel to cease all operations.

Portable Travel Bidet Operation:

- **Power On:** Press the power button to turn on the device.
- **Select Flushing Mode:** Press the function button to cycle through the three modes: Soft, Pulse, and Strong. Choose the mode suitable for your needs.
- **Usage:** Aim the nozzle and activate the spray.
- **Power Off:** Press the power button again to turn off the device.

MAINTENANCE

Smart Bidet Toilet Seat Cleaning:

- **Exterior Cleaning:** Wipe the exterior surfaces with a soft, damp cloth and a mild, non-abrasive cleaner. Avoid harsh chemicals or abrasive pads.
- **Nozzle Cleaning:** The nozzle may have a self-cleaning function. If not, gently pull out the nozzle and clean it with a soft brush and mild soap. Rinse thoroughly.
- **Filter Maintenance:** Periodically check the water filter for debris. Replace if necessary according to manufacturer recommendations.
- **Descaling:** If you live in an area with hard water, periodic descaling may be required. Consult the manufacturer for specific descaling instructions.

Portable Travel Bidet Cleaning:

- **After Each Use:** Empty any remaining water from the reservoir.
- **Regular Cleaning:** Clean the reservoir and nozzle with warm water and mild soap. Ensure all parts are dry before reassembling and storing.
- **Storage:** Store in a clean, dry place, preferably in its provided pouch.

TROUBLESHOOTING

If you encounter issues with your LEIVI B01 product, please refer to the following common solutions:

Problem	Possible Cause	Solution
No water spray from bidet seat.	Water supply valve closed; filter clogged; hose kinked.	Ensure water supply valve is open. Check and clean/replace water filter. Straighten any kinks in the hose.
No heat from seat or water.	Power not connected; heating element issue.	Check if the bidet seat is properly plugged into a working outlet. Ensure the circuit breaker is not tripped.

Problem	Possible Cause	Solution
Weak spray from portable bidet.	Low battery; insufficient water in reservoir; nozzle clogged.	Recharge the portable bidet. Refill the water reservoir. Clean the nozzle.
Portable bidet not charging.	Faulty cable/adapter; not compatible with fast charging.	Try a different USB cable or power adapter. Ensure you are using a standard (slow) charger.

If the problem persists after attempting these solutions, please contact LEIVI customer support.


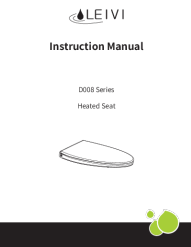


SPECIFICATIONS

Attribute	Detail
Brand	LEIVI
Model Number	LEIVI B01
Color	White
Material	Plastic
Operation Mode	Automatic
Heated Seat Levels	4 levels adjustable
Warm Air Dry Levels	6 levels adjustable
Warm Water Temp. Levels	6 levels adjustable
Portable Bidet Battery	500mAh
Portable Bidet Waterproof Rating	IPX7

WARRANTY AND SUPPORT

LEIVI products are manufactured to high-quality standards. For information regarding warranty coverage, please refer to the warranty card included with your product or visit the official LEIVI website.

For technical support, troubleshooting assistance, or parts inquiries, please contact LEIVI customer service through the contact information provided on the product packaging or the official brand website.

	<p>T162A Smart Toilet Troubleshooting Guide LEIVI</p> <p>Troubleshooting guide for the LEIVI T162A Smart Toilet, covering common issues like product not working, water pressure, deodorization, and remote control problems.</p>
	<p>LEIVI D008 Series Heated Seat Instruction Manual</p> <p>Comprehensive instruction manual for the LEIVI D008 Series Heated Seat, detailing safety precautions, component identification, technical specifications, installation guides, maintenance procedures, troubleshooting tips, and warranty information.</p>
	<p>LEIVI T181 Series Smart Toilet Instruction Manual</p> <p>Comprehensive instruction manual for the LEIVI T181 Series Smart Toilet, covering installation, operation, maintenance, and troubleshooting.</p>
	<p>B01 Series Smart Toilet Seat Instruction Manual</p> <p>This manual provides comprehensive instructions for the B01 Series Smart Toilet Seat, covering safety precautions, components, specifications, installation, product functions, remote control operation, maintenance, and troubleshooting.</p>