

Hiseeu Wired Security camera system 8ch

Hiseeu 5MP Wired Security Camera System 8-Channel User Manual

Model: Wired Security camera system 8ch

1. INTRODUCTION

This manual provides detailed instructions for the installation, operation, and maintenance of your Hiseeu 5MP Wired Security Camera System. This system includes 5MP cameras with audio, an 8-channel DVR, and a pre-installed 3TB hard drive, designed for comprehensive indoor and outdoor surveillance.

2. WHAT'S IN THE BOX

Verify that all components listed below are included in your package:

- 8 x 5MP TVI Cameras
- 1 x 8-Channel 5MP DVR (with pre-installed 3TB Hard Drive)
- 2 x DC Power Splitter (1 Female to 4 Male)
- 4 x 96FT BNC Cables
- 4 x 58FT BNC Cables
- 3 x DC12V 2A Power Adapters
- 1 x HDMI Cable
- 1 x Ethernet Cable
- 1 x Mouse
- 8 x Screws Bags
- 1 x User Manual
- 2 x Warning Stickers

Sealed Design, IP67 Waterproof



IP67
Waterproof



60°C (140°F)
Heat resistance



-40°C (-40°F)
Cold resistance



Image: All components included in the Hiseeu 5MP Wired Security Camera System package.

3. SETUP AND INSTALLATION

3.1 Camera Installation

Follow these steps to install your security cameras:

1. **Drill Holes:** Mark the desired mounting location. Drill pilot holes using an appropriate drill bit for the wall material.
2. **Insert Wall Plugs:** Insert the green wall plugs into the drilled holes. Tap gently with a hammer until flush with the surface.
3. **Mount Camera:** Align the camera base with the wall plugs and secure it using the provided screws. Ensure the camera is firmly attached.
4. **Adjust Angle:** Adjust the camera to the desired viewing angle and tighten the adjustment screws.

Your browser does not support the video tag.

Video: Demonstrates the installation process for the bullet TVI wired security system, including drilling, inserting plugs, and mounting the camera.

Product Detail



Image: A Hiseeu security camera being mounted on an exterior wall, showing the installation process.

3.2 DVR Connection

Connect the DVR to your cameras, monitor, and power source:

1. **Connect Cameras:** Use the BNC cables to connect each camera to the corresponding video input ports on the DVR.
2. **Connect Power:** Use the power adapters and splitters to power the cameras and the DVR.
3. **Connect Monitor:** Connect a monitor to the DVR using an HDMI or VGA cable.
4. **Connect Mouse:** Plug the USB mouse into a USB port on the DVR for navigation.
5. **Connect to Network (Optional):** For remote access, connect the DVR to your router using the Ethernet cable.

Stable 5MP UHD Resolution

5 megapixel, progressive scan, CMOS provide you a clearer picture

5MP



Image: A visual guide illustrating the connections for the camera system, including cameras to DVR, DVR to power, monitor, and router for remote viewing.

4. OPERATING INSTRUCTIONS

4.1 Remote Access and Alerts

To monitor your property remotely and receive alerts:

1. **Download App:** Download the free 'Guard Live' app from your iOS or Android app store.
2. **Add Device:** Follow the in-app instructions to add your DVR system.
3. **Receive Alerts:** Configure push notifications in the app to receive instant alerts for detected events.



10+
Years



2,000,000+
Families' choice



50+
Countries

Why Hiseeu?

We are a professional surveillance camera company, we are committed to the development and production of quality cameras. We are responsible for our customers property and safety at all times.

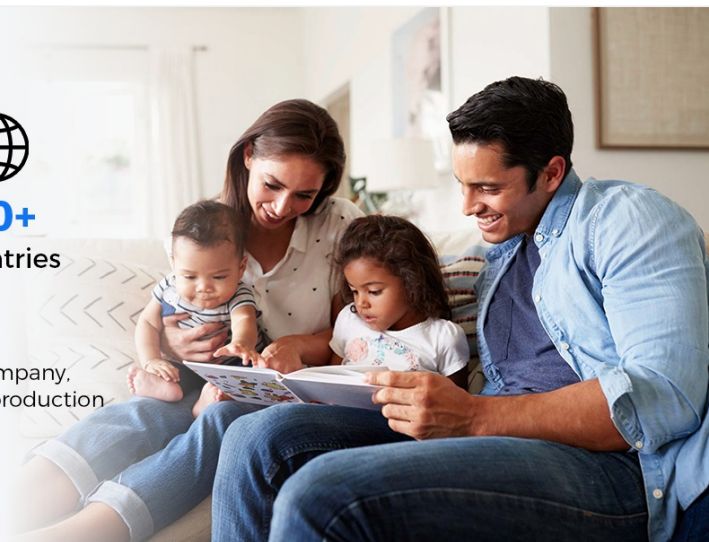


Image: A three-step visual guide showing how to connect the DVR, download the 'Guard Live' app, and view live footage remotely.

4.2 Smart Detection and Alarm Light

The system features advanced AI for human and vehicle detection, triggering an alarm light for enhanced security:

- **AI Detection:** The system can differentiate between humans/vehicles and other objects, reducing false alarms.
- **Alarm Light:** When a human is detected, the camera's white light activates, providing color night vision and acting as a deterrent.

Your browser does not support the video tag.

Video: Instructions on how to enable and configure the alarm light feature for the AHD915A camera system.

Your browser does not support the video tag.

Video: A guide demonstrating how to activate the alarm light function on the 915A 8CH system.



Image: Illustrates the Smart AI Dual-Light feature, where black and white night vision transitions to full color when a human is detected.



Image: Shows the Smart Person/Vehicle Detection feature, with bounding boxes identifying a person and a vehicle in a parking lot.

4.3 Audio Recording

The cameras are equipped with a built-in microphone for one-way audio recording:

- **Listen In:** You can hear audio from the camera via the mobile application.
- **Note:** This system supports one-way audio only; two-way communication is not available.

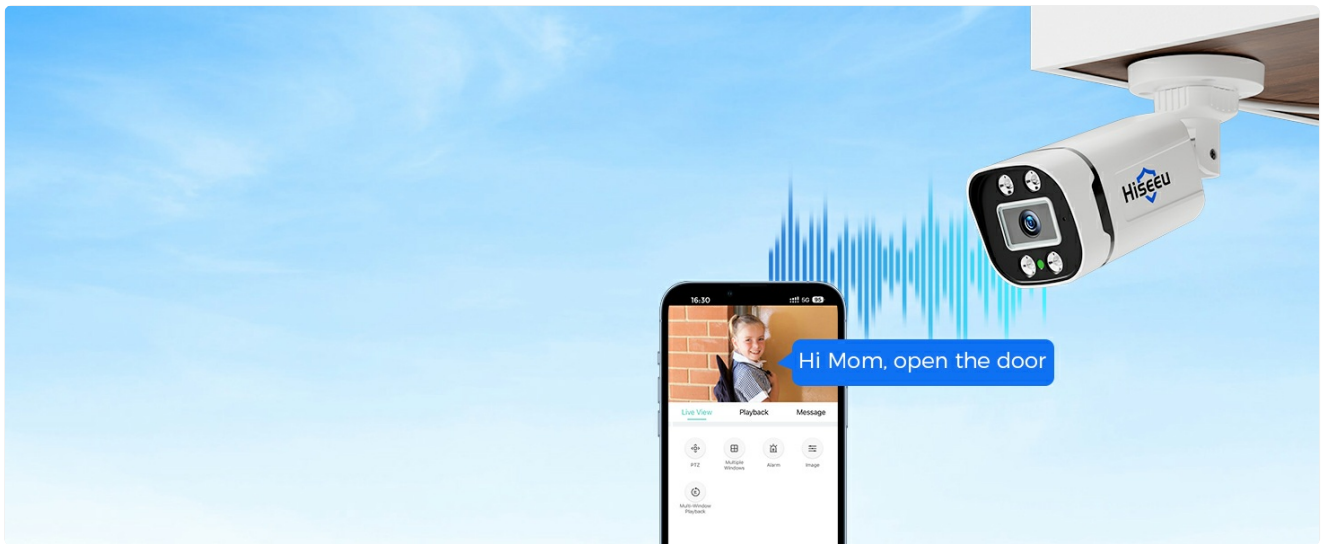


Image: Depicts the one-way audio function, where a person can hear sound from the camera through the mobile app.

4.4 Recording and Playback

The DVR supports continuous recording and smart playback features:

- **24/7 Recording:** The pre-installed 3TB HDD allows for continuous recording for approximately 45 days.
- **Motion-Triggered Recording:** Optionally configure the system to record only when motion is detected to save storage space.
- **Smart Playback:** Use the AI-filtered playback to quickly locate events involving people or vehicles. Fast-forward up to 256x to review footage efficiently.

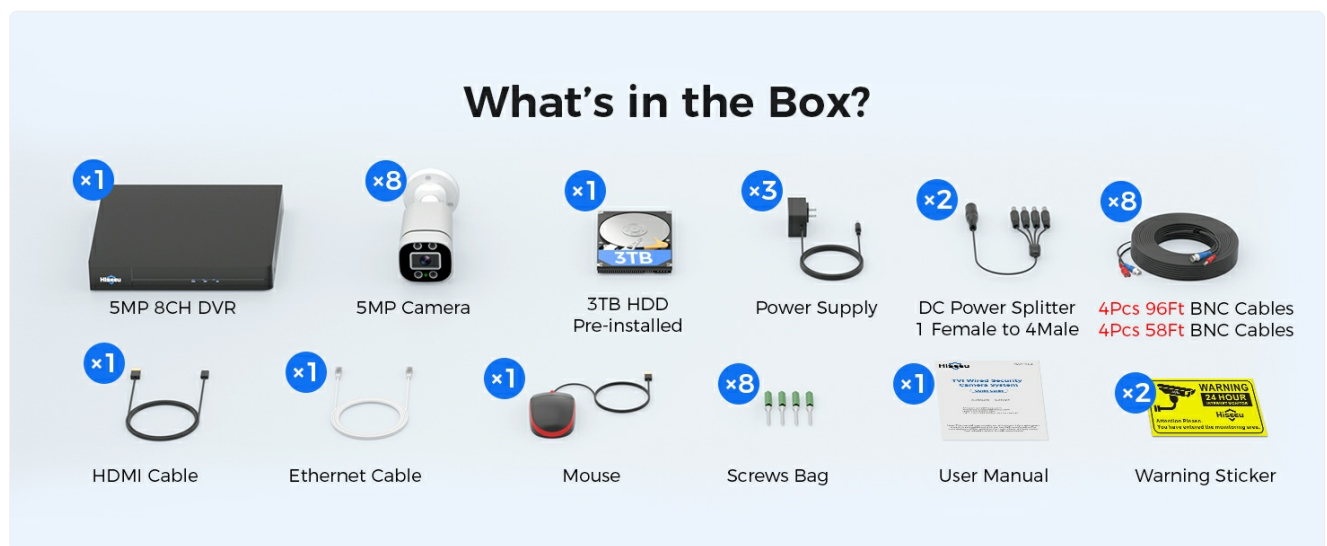


Image: Illustrates the upgraded Smart Playback interface, allowing users to search and review events on a timeline.

5. MAINTENANCE

Your Hiseeu security cameras are designed for durability and require minimal maintenance:

- **Weather Resistance:** The IP66-rated waterproof housing ensures the cameras withstand extreme temperatures (-40°C to 60°C / -40°F to 140°F), making them suitable for various outdoor and indoor environments.
- **Regular Cleaning:** Periodically clean the camera lenses with a soft, damp cloth to ensure clear image quality. Avoid abrasive cleaners.
- **Firmware Updates:** Ensure your system stays current with free firmware upgrades provided by Hiseeu. Check the official website or app for available updates.



Image: A Hiseeu camera highlighting its IP67 durable ABS housing and resistance to hot and cold temperatures.

6. TROUBLESHOOTING

If you encounter issues with your Hiseeu security camera system, consider the following common solutions:

- **No Video Signal:** Check all cable connections between the cameras and the DVR. Ensure power adapters are securely plugged in and providing power.
- **Poor Image Quality:** Clean the camera lens. Ensure the camera is within its effective night vision range if it's dark. Verify the resolution settings on the DVR.
- **No Remote Access:** Confirm the DVR is connected to your router via Ethernet and has internet access. Check network settings on the DVR and ensure the 'Guard Live' app is properly configured.
- **Motion Detection Not Working:** Verify that motion detection is enabled in the DVR settings for the specific camera channels. Adjust sensitivity levels if necessary.
- **Alarm Light Not Activating:** Ensure the alarm light feature is enabled and configured correctly in the motion detection settings, including arming schedules.

For further assistance, please refer to the detailed troubleshooting section on the Hiseeu support website or contact customer service.

7. SPECIFICATIONS

Feature	Detail
Brand	Hiseeu
Connectivity Technology	Wired
Video Capture Resolution	5MP
Special Features	Audio Recording, Human Detection, Smart Playback, Vehicle Detection, Weatherproof
Number of Channels	8
Memory Storage Capacity	3 TB
Color	White

Feature	Detail
Power Source	Corded Electric
Item Dimensions (L x W x H)	7 x 5 x 5 inches
Operating System	Linux
Compatible Devices	Laptops, Personal Computers, Smartphones, Tablets
Other Camera Features	5MP resolution, 100ft night vision, IP66 waterproof, suitable for outdoor/indoor use
Low Light Technology	Night Vision
Night Vision Range	100 Feet
Frame Rate	15 fps, 25 fps, 30 fps
Recording Mode	Manual, Schedule
Total USB Ports	2
Hardware Interface	HDMI
Lens Type	Zoom
Video Input	BNC
Viewing Angle	355 Degrees
Item Weight	16.02 pounds

8. WARRANTY AND SUPPORT

Hiseeu is committed to providing reliable products and excellent customer service:

- **12-Month Warranty:** Your system is backed by a 1-year hassle-free warranty.
- **Lifetime Technical Support:** Access 24/7 technical support for any questions or issues you may encounter.
- **Free Firmware Upgrades:** Benefit from continuous improvements and new features through free firmware upgrades.

For support, please visit the Hiseeu official website or contact their customer service team directly.