

conecto SA-FM13-100

conecto Monitor TV Wall Mount Instruction Manual

Model: SA-FM13-100

1. INTRODUCTION

Thank you for choosing the conecto Monitor TV Wall Mount. This manual provides essential information for the safe and correct installation, operation, and maintenance of your wall mount. Please read these instructions carefully before installation and retain them for future reference.

Safety Information

- Ensure the mounting surface can safely support the combined weight of the mount and your display.
- Do not exceed the maximum weight capacity of 20 kg (44 lbs).
- This mount is designed for displays between 13 and 32 inches.
- Always use appropriate safety equipment during installation.
- If you are unsure about any part of the installation, consult a qualified professional.

2. PACKAGE CONTENTS

Please verify that all components listed below are present and undamaged before beginning installation. If any parts are missing or damaged, please contact conecto customer support.

- Wall Mount Assembly
- Wall Plate Screws and Anchors
- Display Mounting Screws (various sizes for VESA compatibility)
- Washers and Spacers
- Spirit Level
- Wrench
- Installation Manual

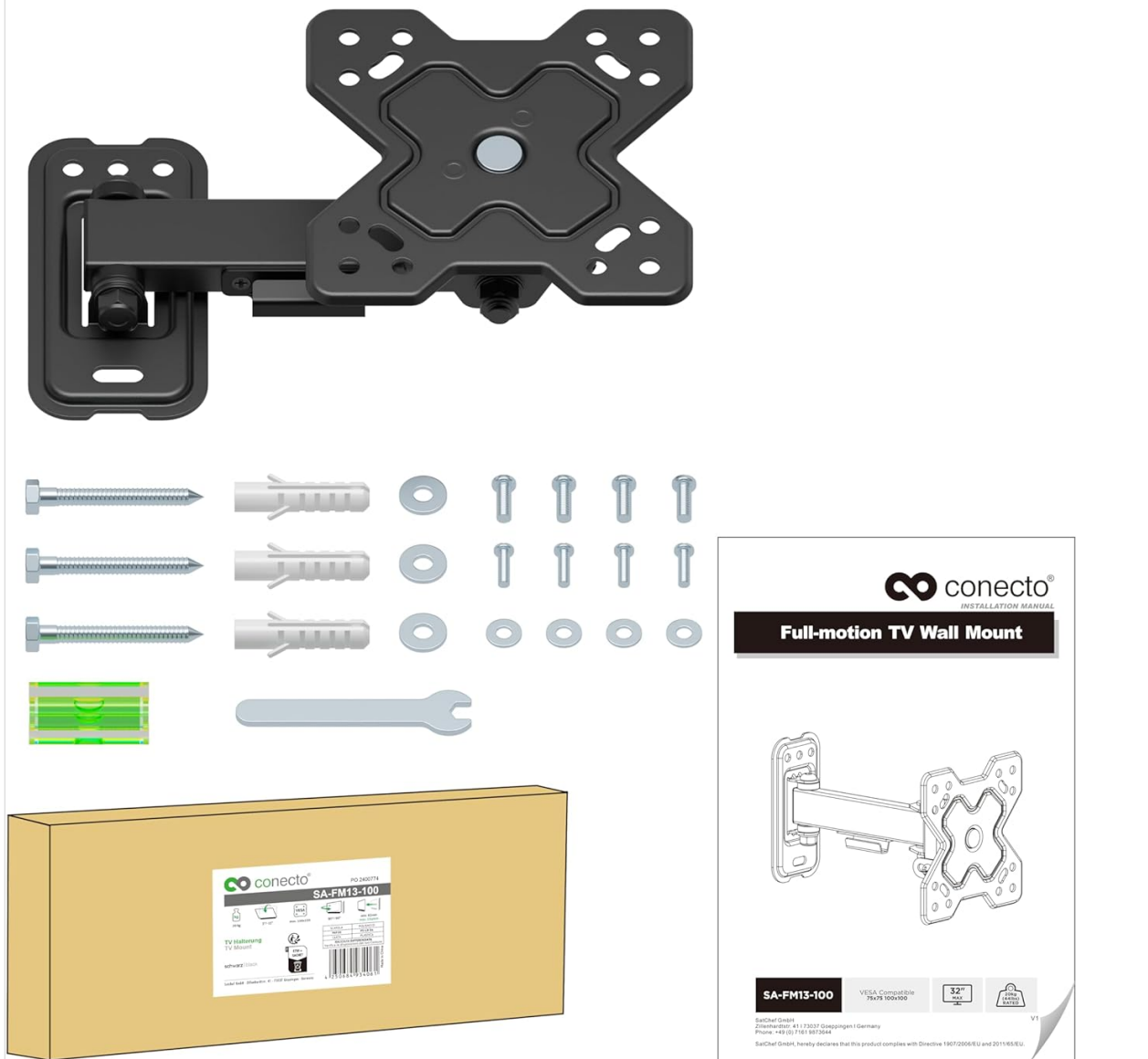


Figure 2.1: All components included in the package. Ensure all parts are present before proceeding with installation.

3. SPECIFICATIONS

Model Number	SA-FM13-100
Compatible Screen Sizes	13 - 32 inches
Maximum Weight Capacity	20 kg (44 lbs)
VESA Compatibility	75x75 mm, 100x100 mm
Tilt Range	+5° to -15°
Swivel Range	Up to 90° left/right
Wall Clearance	62 mm - 194 mm
Material	Stainless Steel
Product Dimensions (folded)	5.12 x 9.06 x 2.36 inches

Item Weight	1.56 pounds
-------------	-------------



Figure 3.1: The mount supports displays from 13 to 32 inches and up to 20 kg.

4. SETUP AND INSTALLATION

4.1 Before Installation

Before mounting, carefully plan the location of your display. Consider viewing angles, cable management, and the type of wall you are mounting to.

Wall Type Compatibility

This mount is suitable for installation on:

- Wooden Walls (single stud)
- Solid Brick Walls

- Concrete Walls

Note: Do not install on drywall alone without securing to a stud or using appropriate anchors for the wall material.



Figure 4.1: Compatible wall types for secure installation.

VESA Compatibility

The mount supports VESA patterns of 75x75 mm and 100x100 mm. Verify your display's VESA pattern before proceeding.

4.2 Installation Steps

Refer to the included illustrated installation guide for detailed, step-by-step instructions. A general overview of the process is as follows:

1. **Mark Drilling Locations:** Use the wall plate as a template to mark the drilling points on your wall. Use the included spirit level to ensure accuracy.
2. **Drill Holes:** Drill pilot holes at the marked locations according to the recommended drill bit size for your wall type. Insert wall anchors if necessary.

3. **Attach Wall Plate:** Secure the wall plate to the wall using the provided screws. Ensure it is firmly attached and level.
4. **Attach VESA Plate to Display:** Attach the VESA mounting plate to the back of your monitor or TV using the appropriate screws and spacers from the hardware kit.
5. **Hang Display:** Carefully lift the display with the attached VESA plate and hook it onto the wall mount arm. Secure any safety mechanisms as per the detailed guide.

5. OPERATING INSTRUCTIONS

Once installed, your conecto wall mount allows for flexible adjustment of your display.

5.1 Tilt Adjustment

The mount allows for a tilt range of $+5^{\circ}$ (upwards) to -15° (downwards). To adjust the tilt, loosen the tilt adjustment screws on the VESA plate, set the desired angle, and then securely tighten the screws to hold the position.



Figure 5.1: Tilt range of $+5^{\circ}$ to -15° for optimal viewing.

5.2 Swivel Adjustment

The mount can swivel up to 90° to the left and 90° to the right. To adjust the swivel, gently push or pull the display to the desired horizontal angle. The friction joints are designed to hold the position.



Figure 5.2: Swivel range of up to 90° left and right.

5.3 Wall Clearance

The mount provides a wall clearance that can be adjusted between 62 mm and 194 mm. This allows for better air circulation behind the display and facilitates access to ports and cables.

Ample Adjustments



Figure 5.3: Adjustable wall clearance for ventilation and port access.

6. MAINTENANCE

Regular maintenance ensures the longevity and safe operation of your wall mount.

- **Cleaning:** Wipe the mount with a soft, dry cloth. Avoid abrasive cleaners or solvents that could damage the finish.
- **Check Connections:** Periodically check all screws and bolts to ensure they remain tight and secure. Retighten if necessary.
- **Inspect for Wear:** Inspect the mount for any signs of wear, damage, or corrosion. If any issues are found, discontinue use and contact customer support.

7. TROUBLESHOOTING

If you encounter issues with your wall mount, refer to the following common problems and solutions:

- **Mount is not level:** Ensure the wall plate was installed level. If not, you may need to re-drill or adjust. The VESA plate on the display may also have a slight rotational adjustment feature; check your specific

display's manual.

- **Display sags or does not hold position:** Ensure all tilt and swivel adjustment screws are sufficiently tightened. Verify that the display's weight does not exceed the mount's maximum capacity.
- **Difficulty adjusting movement:** Check for any obstructions. Ensure all moving parts are clean and free of debris. Do not force adjustments.
- **Missing parts:** Refer to the 'Package Contents' section. If parts are missing upon unboxing, contact conecto customer support immediately.




8. WARRANTY AND SUPPORT

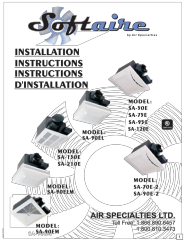
For warranty information, please refer to the documentation provided with your purchase or visit the official conecto website. If you require technical assistance or have questions not covered in this manual, please contact conecto customer support through their official channels.

Manufacturer: Satchef GmbH

© 2025 conecto. All rights reserved.

Related Documents - SA-FM13-100

	<p>Conecto Indoor Pan-Tilt Camera 2MP Setup Guide</p> <p>A step-by-step guide to setting up your Conecto Indoor Pan-Tilt Camera 2MP using the Smart Life app, including important safety information and technical specifications.</p>
	<p>EDELRID Conecto: User Manual and Safety Guide for Rope Courses</p> <p>Comprehensive instructions for the safe use, maintenance, and storage of the EDELRID Conecto individual safety system for rope courses, adhering to EN 17109 standards.</p>
	<p>Sim-Lab Integrated Monitor Mount VESA 75/100 Instruction Manual</p> <p>Detailed assembly instructions for the Sim-Lab Integrated Monitor Mount VESA 75/100, version 2.2. Includes parts list, tools needed, and step-by-step guidance for building your monitor mount.</p>



[Softaire Ventilation Fan Installation Guide and Safety Instructions](#)

This guide provides comprehensive installation instructions, safety precautions, wiring diagrams, and accessory information for Softaire ventilation fans by Air Specialties Ltd. It covers models including SA-50E, SA-75E, SA-95E, SA-120E, SA-150E, SA-210E, SA-90EL, SA-90EM, SA-90ELM, SA-70E-2, and SA-90E-2.



[ZIPort Panel Interface Connectors: Features, Specifications, and Dimensions](#)

Explore the ZIPort Panel Interface Connectors, offering secure and convenient access to control panels. This document details features, technical specifications, pinouts, and dimensions for various models, enhancing operational safety and efficiency.



[CLAS OM 3778 Damaged Glow Plug Extraction Set M8-M10](#)

Comprehensive guide to using the CLAS OM 3778 kit for safely removing damaged or broken glow plugs from M8 x 1.0 and M10 x 1.0 threaded cylinder heads. Includes detailed instructions and tool list.