

Jafända JF268

Jafända Air Purifier JF268 Instruction Manual

Model: JF268 | Brand: Jafända

[Instructions](#) [Safety Information](#) [Maintenance](#) [Product Overview](#) [Troubleshooting](#) [Setup](#) [Operating](#) [Specifications](#) [Warranty & Support](#)

1. IMPORTANT SAFETY INFORMATION

Please read all instructions carefully before use and retain for future reference.

- Always place the air purifier on a firm, level surface.
- Do not block air inlets or outlets.
- Keep the appliance away from water or other liquids.
- Unplug the appliance before cleaning or performing any maintenance.
- Do not use if the power cord or plug is damaged.
- Keep out of reach of children and pets. Use child lock feature for added safety.
- This appliance is for indoor use only.
- Do not use near heat sources or in direct sunlight.
- Ensure proper ventilation around the unit.

2. PRODUCT OVERVIEW

The Jafända Air Purifier JF268 is designed to improve indoor air quality in large rooms, bedrooms, and offices. It features a high-efficiency 3-in-1 filtration system, smart PM2.5 sensor with Auto Mode, ultra-quiet 20dB Sleep Mode, and an aromatherapy function.

Key Features:

- **Powerful Coverage:** Refreshes air in rooms up to 1226 ft² per hour with a high-efficiency fan and Turbo Mode.
- **3-in-1 Filtration System:** Includes a pre-filter, True HEPA filter, and activated carbon layer to capture 99.97% of particles as small as 0.3 microns, neutralizing odors and VOCs. CARB, ETL, and FCC certified for safe, ozone-free operation.
- **Smart PM2.5 Sensor & Auto Mode:** Continuously monitors air quality and automatically adjusts fan speed. Features a four-color air quality indicator (Green–Excellent / Blue–Moderate / Yellow–Poor / Red–Unhealthy).
- **Ultra-Quiet 20dB Sleep Mode & Timer:** Dims indicator lights and operates at 20 dB for a peaceful environment. Includes 1/2/4/8-hour timer options.
- **Family-Safe Design with Aromatherapy:** Child lock for safety, aromatherapy pad for essential oils, and a filter replacement reminder.

Sleek Design, Seamless Style

Purifies 1,226 sq.ft in 1 Hour | CADR 268m³/h

1x per hour
in rooms up to
1226ft²

613 ft²
2 Times/h

245 ft²
5 Times/h

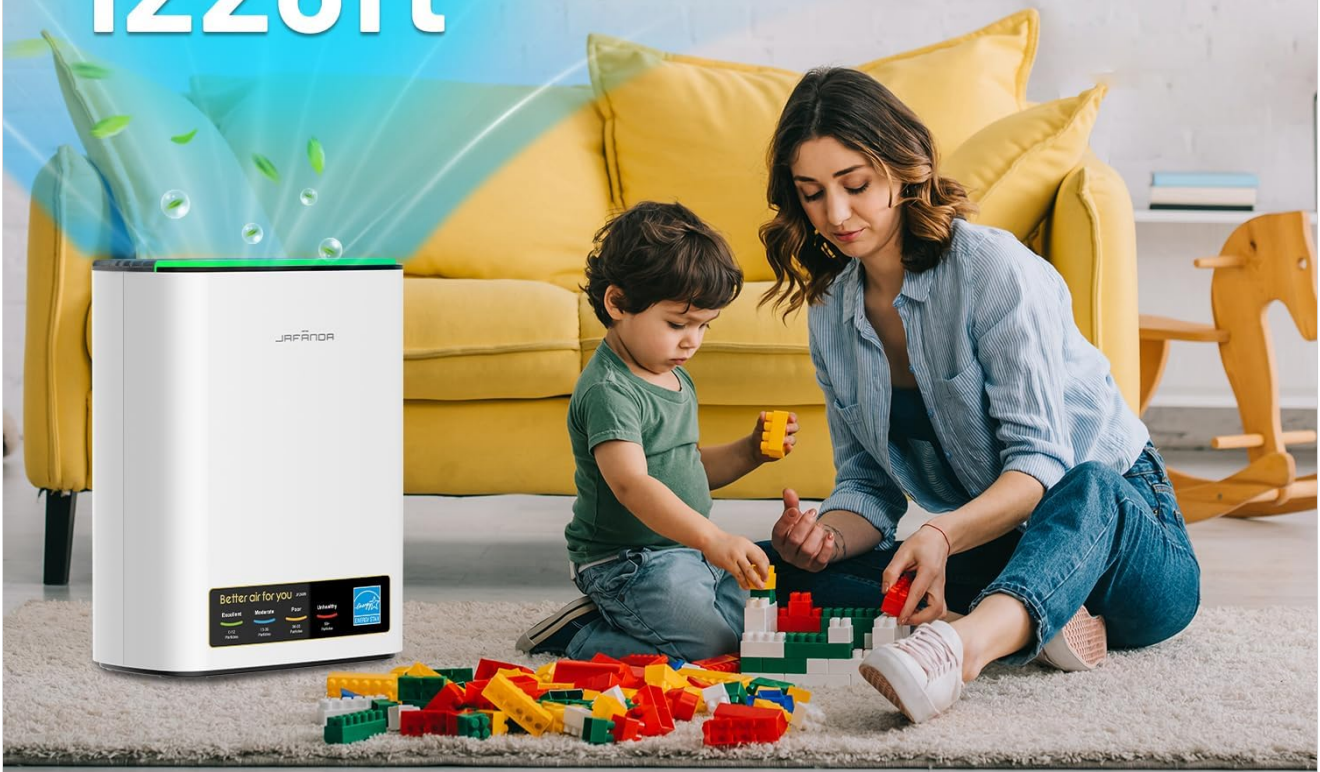


Figure 2.1: The Jafanda Air Purifier JF268 effectively purifies air in large rooms, covering up to 1226 sq.ft in one hour.

3-Stage Filtration | 99.97% Removal at 0.3 μ m

Traps Allergens, Smoke & Odors with HEPA 13 + Activated Carbon

- 1 Pre-Filter | Pet Hair & Dust
- 2 True HEPA | 99.97% at 0.3 μ m
- 3 Activated Carbon | VOCs & Odors

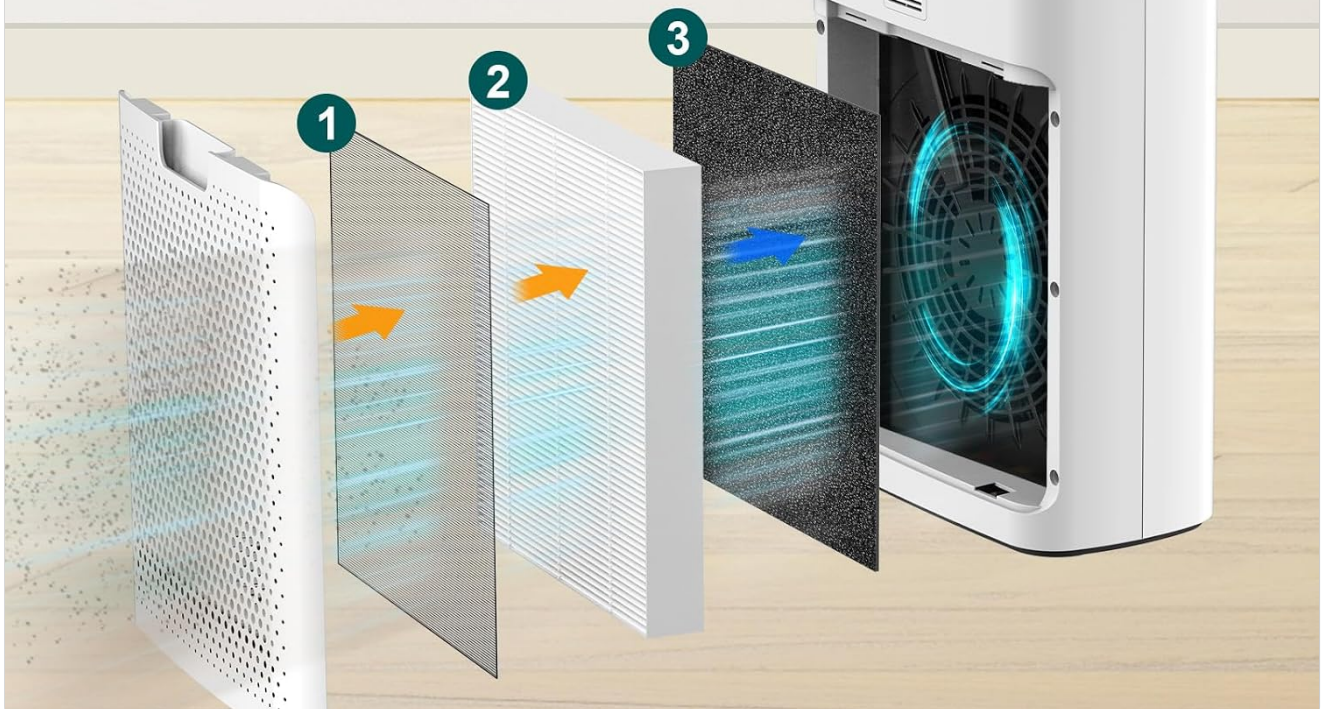


Figure 2.2: Detailed view of the 3-stage filtration system: Pre-Filter for pet hair & dust, True HEPA for 99.97% particle removal, and Activated Carbon for VOCs & odors.

3. PACKAGE CONTENTS

Upon unpacking, please ensure all items listed below are present and in good condition:

- Jafānda Air Purifier Unit (Model JF268)
- 3-in-1 True HEPA Filter (pre-installed inside the unit)
- Power Adapter
- Aromatherapy Pads (multiple included)
- User Manual

Note: The filter comes sealed in plastic for protection. Remove the plastic before first use.

4. SETUP GUIDE

1. **Unpack the Unit:** Carefully remove the air purifier from its packaging.
2. **Remove Filter Packaging:**
 - Locate the back cover of the air purifier.
 - Gently pull the tab to open and remove the back cover.
 - Take out the 3-in-1 filter, which is sealed in a plastic bag.
 - Remove the plastic packaging from the filter.
 - Insert the filter back into the unit, ensuring it is correctly oriented.
 - Replace the back cover, ensuring it clicks securely into place.
3. **Place the Unit:** Position the air purifier on a flat, stable surface, ensuring there is at least 15 cm (6 inches) of space around all sides for optimal airflow.
4. **Connect Power:** Plug the power adapter into the air purifier and then into a standard electrical outlet.

Your browser does not support the video tag.

Video 4.1: This video demonstrates the unboxing and initial setup of the Jafānda Air Purifier, including how to remove and unwrap the filter before first use.

5. OPERATING INSTRUCTIONS

The Jafānda Air Purifier features a user-friendly touch control panel on the top of the unit.

Smart Touch Control

Turbo Mode in 1 Tap



Turbo Mode
(Instant Purification)



PM2.5 Sensor
(Accurate Detection)



Figure 5.1: The smart touch control panel allows easy access to all functions, including fan speed, timer, and mode selection.

Control Panel Functions:

- **On/Off Button (●):** Press to turn the unit on or off.
- **Speed Button (⚙️):** Cycles through fan speeds (Low, Medium, High) and Auto Mode.
- **Auto Mode:** The PM2.5 sensor automatically adjusts fan speed based on detected air quality.
- **Turbo Mode (☼):** Activates the highest fan speed for rapid air purification.
- **Timer Button (⌚):** Sets the operating time for 1, 2, 4, or 8 hours. The unit will automatically turn off after the set time.
- **Light Button (💡):** Toggles the display lights on or off. Useful for sleep mode.
- **Child Lock Button (🔒):** Press and hold for 3 seconds to activate/deactivate the child lock, preventing accidental changes to settings.
- **Filter Reset Button (🔄):** After replacing the filter, press and hold for 3 seconds to reset the filter life indicator.

Air Quality Indicator (PM2.5 Display):

The unit features a real-time PM2.5 display and a four-color indicator light to show current air quality:

- **Green:** Excellent Air Quality (0-12 particles)
- **Blue:** Moderate Air Quality (13-35 particles)
- **Yellow:** Poor Air Quality (36-55 particles)
- **Red:** Unhealthy Air Quality (56+ particles)



Figure 5.2: The PM2.5 display and color-coded light provide instant feedback on air quality.

Aromatherapy Function:

To add essential oils:

1. Locate the small aromatherapy pad holder on the side of the unit.
2. Gently press to release and pull out the holder.
3. Add a few drops of your preferred essential oil onto the pad.
4. Slide the holder back into the unit until it clicks into place.

Customizable Aromatherapy Your Scent, Your Mood

Neutralize Odors with Essential Oils



Aromatherapy

Figure 5.3: The aromatherapy feature allows for customization of your environment with essential oils.

6. MAINTENANCE

Regular maintenance ensures optimal performance and extends the lifespan of your air purifier.

Filter Replacement:

The filter replacement indicator light will illuminate when it's time to replace the filter (approximately every 6-8 months, depending on usage and air quality).

1. Unplug the air purifier from the power outlet.
2. Remove the back cover by pulling the tab.
3. Remove the old 3-in-1 filter.
4. Insert a new Jafanda replacement filter (ASIN: B0CYPRC3B9), ensuring the pull tabs face outwards.

5. Replace the back cover.
6. Plug in the air purifier.
7. Press and hold the "Filter Reset" button for 3 seconds until the indicator light turns off.

Note: Replacement filters are available in the [Jafānda Store](#).

Cleaning the Unit:

- Wipe the exterior of the air purifier with a soft, dry cloth.
- Do not use abrasive cleaners or solvents.
- Clean the air inlet and outlet vents with a soft brush or vacuum cleaner attachment to remove dust.

7. TROUBLESHOOTING

Problem	Possible Cause	Solution
Unit does not turn on.	Not plugged in; power outage; power adapter issue.	Ensure the power adapter is securely plugged into the unit and a working outlet. Check the power source.
Airflow is weak or noisy.	Filter is dirty or clogged; air inlets/outlets blocked.	Check and replace the filter if necessary. Ensure no obstructions are blocking the air vents.
Air quality indicator always red/yellow.	High level of pollutants; sensor is dirty.	Run the unit on Turbo Mode. Clean the PM2.5 sensor area with a dry cotton swab.
Filter replacement indicator remains on after changing filter.	Filter reset not performed.	Press and hold the "Filter Reset" button for 3 seconds.

8. SPECIFICATIONS

- **Model Number:** JF268
- **Product Dimensions:** 13.11"D x 7.48"W x 17.64"H
- **Item Weight:** 3.2 Kilograms (7.05 Pounds)
- **Power Source:** AC/DC
- **Coverage Area:** Up to 1226 ft² per hour
- **Noise Level:** As low as 20 dB (Sleep Mode)
- **Filtration:** 3-in-1 True HEPA Filter (Pre-filter, True HEPA, Activated Carbon)
- **Certifications:** CARB, ETL, FCC, Energy Star

9. WARRANTY & SUPPORT

Jafānda products are manufactured to the highest quality standards. This product comes with an after-sale guarantee. For any questions, concerns, or support needs, please contact Jafānda customer service through the official [Jafānda Store](#) or refer to the contact information provided in your product packaging.