



[Manuals.plus](#) /

> [VENTEHLATION](#) /

> VENTEHLATION Bathroom Exhaust Fan 70CFM (Model BPT13-13EN3) User Manual

VENTEHLATION BPT13-13EN3

VENTEHLATION Bathroom Exhaust Fan 70CFM (Model BPT13-13EN3) User Manual

Model: BPT13-13EN3 | Brand: VENTEHLATION

1. INTRODUCTION

Thank you for choosing the VENTEHLATION 70CFM Bathroom Exhaust Fan. This manual provides essential information for the safe installation, operation, and maintenance of your new ventilation fan. Designed for bathrooms up to 75 sq. ft., this fan offers efficient air movement at 70 Cubic Feet Per Minute (CFM) with a quiet 1.5 Sone operation. It features a durable galvanized steel housing, an ABS plastic grille, and built-in thermal protection for enhanced safety and longevity.



This image illustrates the VENTECHLATION exhaust fan discreetly installed in a ceiling, emphasizing its quiet operation at 1.5 Sones and powerful 70 Cubic Feet Per Minute (CFM) airflow, suitable for rooms up to 75 sq. ft.

2. SAFETY INFORMATION

Please read all instructions carefully before installation and use. Failure to follow these instructions may result in electric shock, fire, or personal injury.

- Always disconnect power at the service panel before wiring or servicing the unit.
- All wiring must comply with local electrical codes and standards. Consult a qualified electrician if you are unsure.
- This fan is acceptable for use over a bathtub or shower when installed in a GFCI-protected branch circuit.
- Do not use this fan in areas where it may be exposed to water spray or direct contact with water, unless specifically rated for such use.
- Ensure the ducting used is 3 inches in diameter for optimal performance and safety.
- The fan includes built-in thermal protections that automatically shut off the unit if it reaches an unsafe temperature, preventing overheating.

- Do not use this fan with any solid-state speed control device unless specifically recommended by the manufacturer.

3. PACKAGE CONTENTS

Verify that all components are present and undamaged before beginning installation. If any parts are missing or damaged, contact customer support.

- Fan Housing Unit
- White Grille Cover
- Installation Manual
- Mounting Screws (4 pcs)

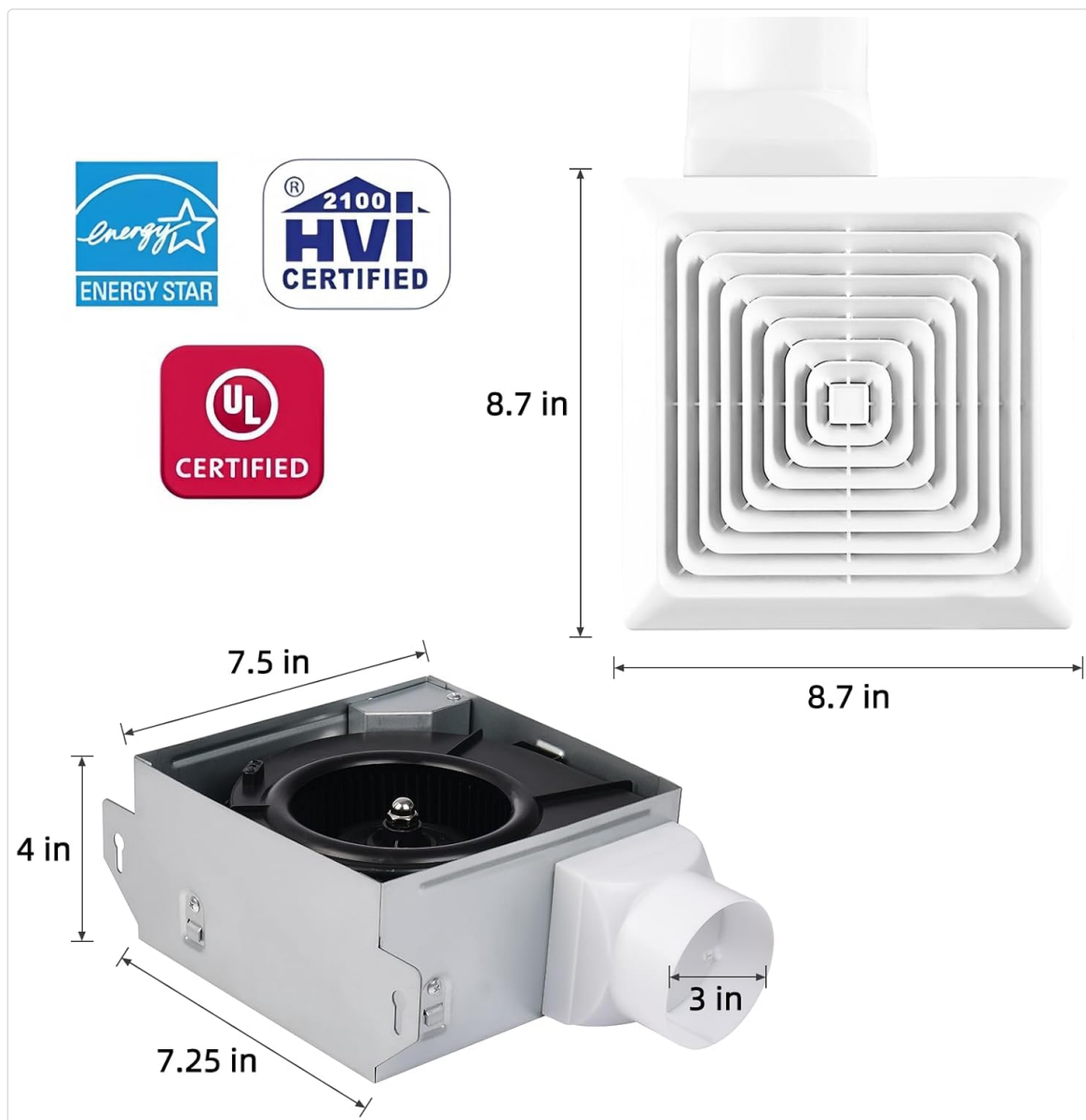


A clear display of all items included in the product package: the main fan housing unit, a detailed installation manual, a set of mounting screws, and the decorative white grille.

4. SPECIFICATIONS

Feature	Specification
Brand	VENTECLATION

Feature	Specification
Model Name	BPT13-13EN3
Air Flow Capacity	70 CFM (Cubic Feet Per Minute)
Noise Level	1.5 Sones
Power Source	AC
Voltage	120 Volts
Wattage	20 watts
Product Dimensions (Housing)	7.5"D x 7.25"W x 4"H
Ceiling Mounting Opening	7.6" x 7.3"
Duct Size	3 inches
Certifications	Energy Star, HVI Certified, UL Certified
Finish Type	Aluminum (Housing)
Grille Material	ABS Plastic
Indoor/Outdoor Usage	Indoor



A technical diagram providing the precise dimensions of the fan housing (7.5in x 7.25in x 4in) and grille (8.7in x 8.7in), along with certifications including Energy Star, HVI Certified, and UL Certified, ensuring performance and safety standards.

5. INSTALLATION

This fan is designed for easy installation from the room-ceiling side, requiring no attic access for existing construction. It replaces most small bathroom standard fans using existing openings.

Installation Steps:

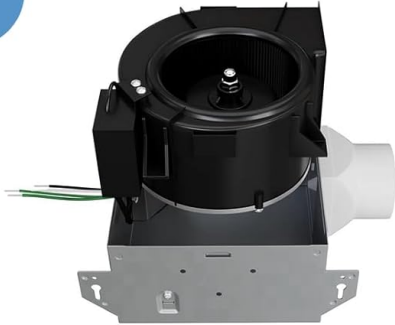
1. **Prepare the Opening:** Ensure the ceiling opening is approximately 7.6 inches by 7.3 inches. Disconnect power at the circuit breaker.
2. **Remove the Blower:** Carefully remove the blower assembly from the fan housing. This allows for easier handling of the housing during installation.
3. **Insert the Housing:** Insert the fan housing into the ceiling opening. Connect the 3-inch ductwork to the fan's duct connector.
4. **Secure the Housing:** Use the provided mounting screws to securely fasten the fan housing to

the ceiling joists or framing.

5. **Connect Wiring:** Connect the electrical wiring according to local codes. Ensure all connections are secure and properly insulated.
6. **Install the Blower:** Reinstall the blower assembly into the secured fan housing.
7. **Attach the Grille:** Secure the white grille cover to the fan housing.
8. **Restore Power:** Restore power at the service panel and test the fan's operation.

No Attic Access Installation For existing construction, installation can be done from rooms.

1



Take the blower out

2



Insert the housing

3



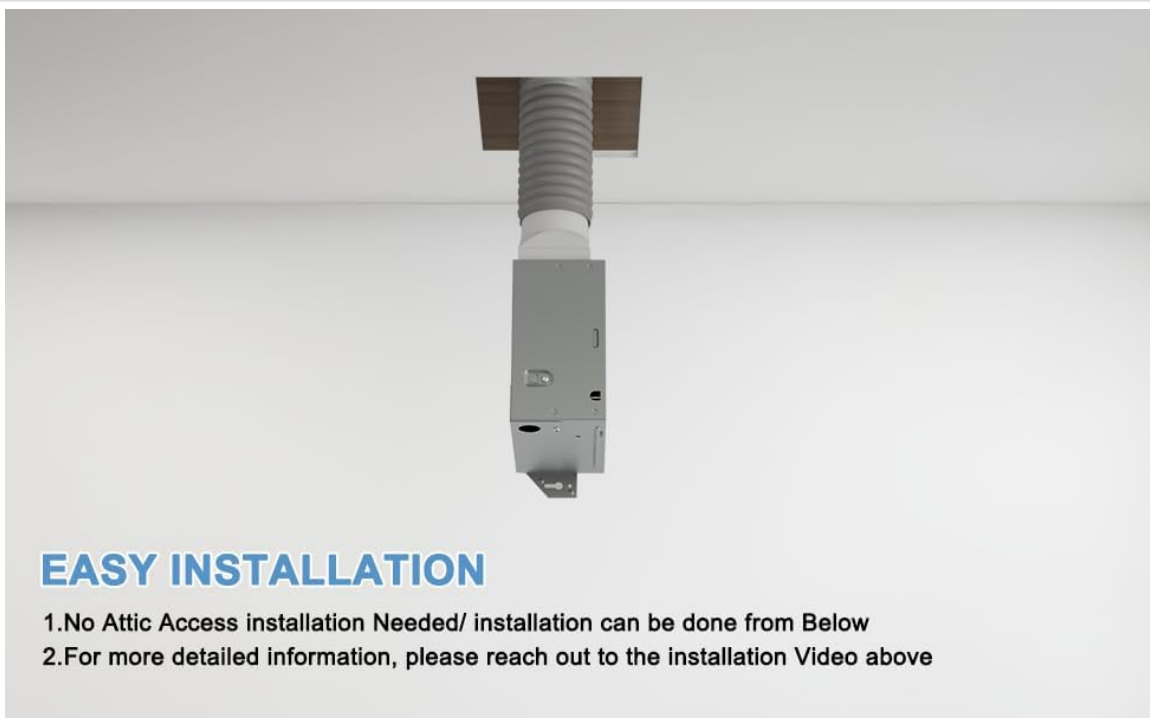
Secure the housing with screws

4



Install the blower

A step-by-step visual guide demonstrating the installation process for the exhaust fan, specifically designed for 'no attic access' installation. Steps include: 1. Taking out the blower, 2. Inserting the housing into the ceiling, 3. Securing the housing with screws, and 4. Installing the blower back into the housing.



EASY INSTALLATION

- 1.No Attic Access installation Needed/ installation can be done from Below
- 2.For more detailed information, please reach out to the installation Video above

This image visually confirms the 'easy installation' feature, showing the fan housing being mounted directly from the room side, eliminating the need for attic access during installation.

6. OPERATION

The VENTECHLATION Bathroom Exhaust Fan operates via a standard wall switch (not included). Simply toggle the switch to turn the fan ON or OFF. For optimal ventilation, it is recommended to operate the fan during and after showering or bathing to effectively remove moisture and odors from the bathroom.

7. MAINTENANCE

Regular maintenance ensures optimal performance and extends the lifespan of your exhaust fan. Always disconnect power before performing any maintenance.

Cleaning the Grille:

- Gently pull down the grille cover to detach it from the housing.
- Wash the grille with mild soap and water. Rinse thoroughly and allow it to dry completely before reattaching.

Cleaning the Fan Interior:

- With the grille removed and power disconnected, carefully wipe down the fan blades and interior surfaces with a damp cloth.
- Do not immerse electrical components in water.
- Ensure all parts are dry before restoring power.

8. TROUBLESHOOTING

If you encounter issues with your VENTECHLATION exhaust fan, refer to the following common problems and solutions:

Problem	Possible Cause	Solution
Fan does not turn ON	No power, loose wiring, faulty switch, tripped circuit breaker.	Check power supply, inspect wiring connections, test the switch, reset circuit breaker.
Fan is excessively noisy	Loose mounting, debris in fan blades, motor issue, improper ducting.	Ensure fan is securely mounted, clean fan blades, check duct for obstructions. If motor issue, contact support.
Poor ventilation/airflow	Blocked ductwork, dirty fan blades, fan size inadequate for room.	Inspect and clear ductwork, clean fan blades. Ensure fan is correctly sized for the room (70CFM for up to 75 sq. ft.).
Fan stops unexpectedly	Thermal overload protection activated.	Disconnect power, allow fan to cool down. Check for obstructions or excessive heat sources. Restore power. If problem persists, contact support.

9. WARRANTY AND SUPPORT

For warranty information or technical support, please refer to the contact details provided with your purchase documentation or visit the official VENTECHLATION website. Please have your model number (BPT13-13EN3) and purchase date available when contacting support.