

[Manuals.plus](#) /

> [A ABSOPRO](#) /

> A ABSOPRO Fuel Sending Unit and Gauge Kit (650mm Length, 0-190 Ohm) Instruction Manual

A ABSOPRO aopro240814000924eu

A ABSOPRO Fuel Sending Unit and Gauge Kit (650mm Length, 0-190 Ohm) Instruction Manual

Model: aopro240814000924eu

1. INTRODUCTION AND OVERVIEW

This manual provides essential information for the installation, operation, and maintenance of your A ABSOPRO Fuel Sending Unit and Gauge Kit. This kit is designed to accurately display fuel or water levels in various applications, including marine vessels, RVs, cars, and trucks.

The marine sending unit is versatile and can be adjusted in length to fit different tank depths. It features a robust construction for long-term reliability and is suitable for use with fuel, water, kerosene, and chemical tanks.

Oil Level Sensor

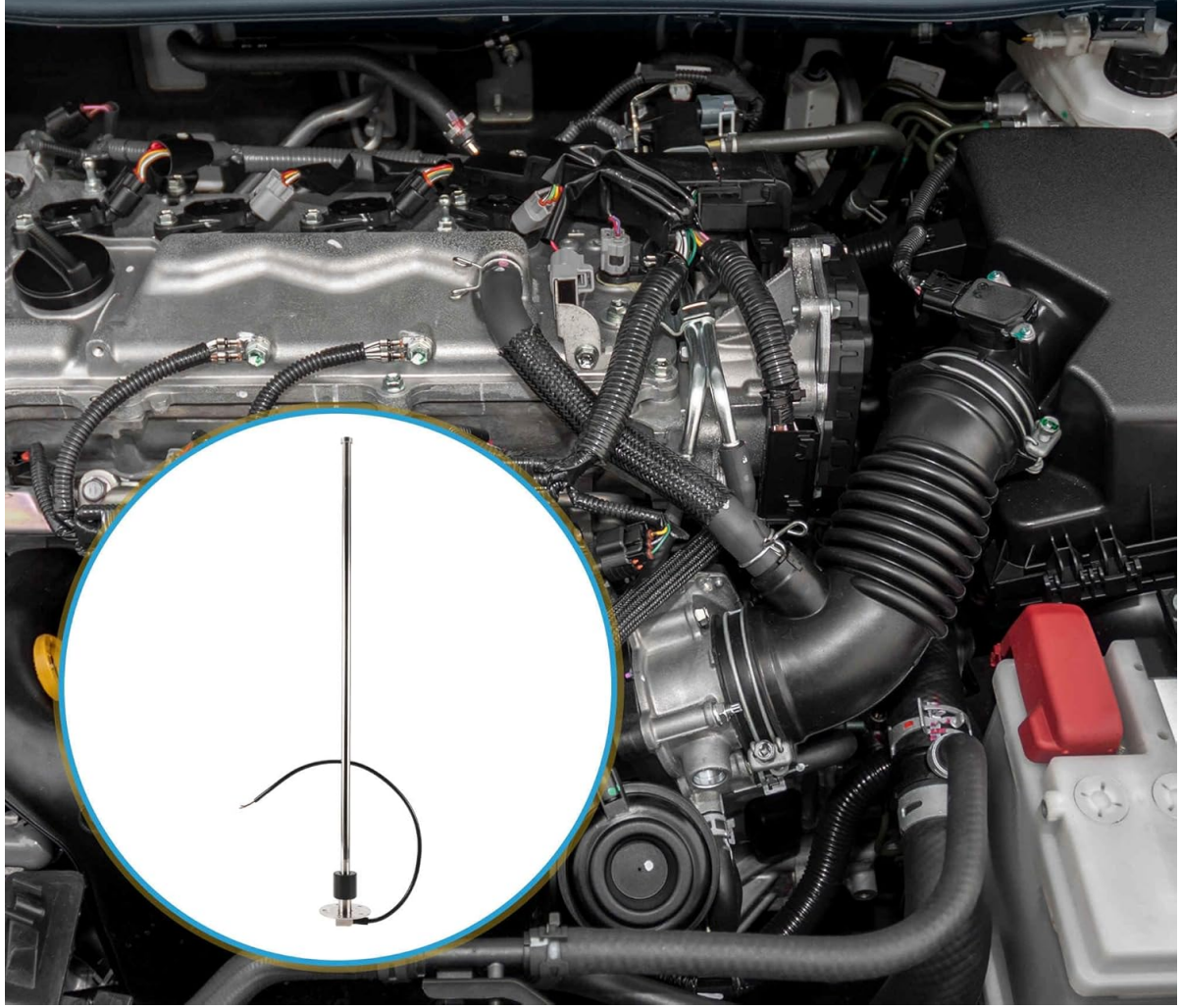


Image 1.1: Overview of the Fuel Sending Unit in an automotive context.

Product Highlights:

- Durable construction for extended service life.
- Easy installation and connection.
- Utilizes magnetic field principle for reed on-off switch control.
- Features strong corrosion resistance, anti-vibration, and anti-explosion properties.



- **Silver-Plated Copper pins**
- **High Level of Conductivity**
- **Improved Heat Resistance**
- **Resistant to Oxidation**

— FEATURES —

Image 1.2: Detail of the unit's silver-plated copper pins for high conductivity.



Brass

- Wear Resistant
- Corrosion Resistant

FEATURES

Image 1.3: Detail of the brass components for wear and corrosion resistance.

2. SETUP AND INSTALLATION

Proper installation is crucial for accurate readings and reliable operation. Follow these steps carefully:

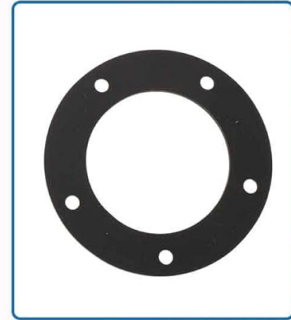
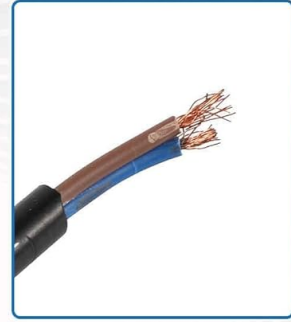
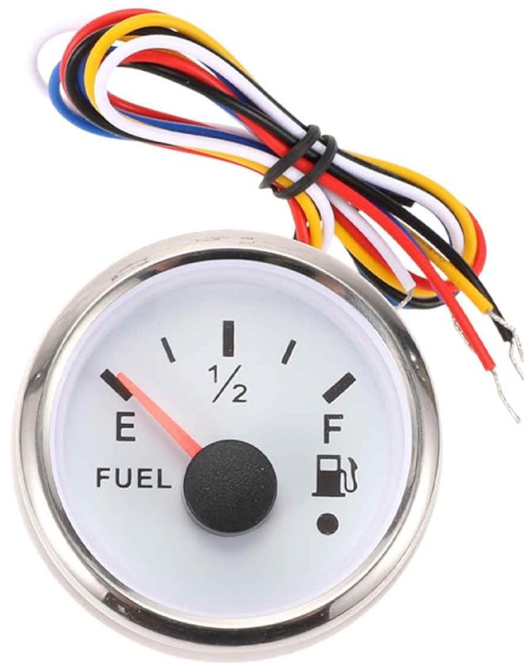
2.1 Pre-Installation Checks:

1. **Check Tank Depth:** Before installation, measure the depth of your tank to ensure the sending unit's length is appropriate. The unit's length can be shortened or adjusted as needed.
2. **Clearance:** Ensure there is a minimum of one inch (25 mm) of space between the float retaining collar and the tank bottom, especially when installed near the tank's adjacent wall or baffle.

2.2 Adjusting Sender Unit Length:

The maritime gasoline sender unit can be easily adjusted or cut to match the tank depth. For flexible movement in confined areas, loosen the central screw to rotate the unit, then tighten it again. Alternatively, the unit can be cut to the desired length.

2.3 Wiring Connections:



FEATURES

Image 2.1: Kit components including the gauge and wiring.

1. **Ground Wire (Blue):** Connect the blue wire from the marine fuel sending unit to a common grounding hook-up. This blue wire also connects to the negative pole of the power supply.
2. **Signal Wire (Red):** Connect the red signal wire from the fuel level sending unit to the gauge hook-up on your dashboard.
3. **Gauge Connection:** After securing the sender unit in the tank and connecting the wiring, connect the gauge to the appropriate power and signal sources in your dashboard.

Important Note: Based on user feedback, if the wiring diagram provided with the product is unclear, ensure that a brown wire on the sender is grounded. If the unit is mounted on a plastic tank, the sender frame itself must also be grounded for proper operation.

3. OPERATING INSTRUCTIONS

Once properly installed and wired, the fuel sending unit and gauge kit will provide real-time fuel or water level information. The gauge will display the current level, allowing you to monitor the remaining volume in your tank.

The system is designed to read accurately, providing clear indications of your fuel or water status without the need for manual checks.

4. MAINTENANCE

To ensure the longevity and accurate performance of your fuel sending unit and gauge kit, consider the following maintenance tips:

- **Regular Inspection:** Periodically inspect all wiring connections for signs of corrosion, fraying, or damage. Ensure connections are secure.
- **Cleanliness:** Ensure the sender unit's float mechanism is free from debris, sludge, or foreign objects that could impede its movement and affect accuracy.
- **Environmental Protection:** While the unit is designed for corrosion resistance, minimizing exposure to harsh chemicals or extreme conditions can further extend its lifespan.

5. TROUBLESHOOTING

If you encounter issues with your fuel sending unit and gauge kit, refer to the following common troubleshooting steps:

- **No Reading or Incorrect Reading:**
 - Verify all electrical connections are secure and correctly wired (ground and signal).
 - Ensure the blue ground wire is properly connected to a common ground and the negative power supply.
 - If installed on a plastic tank, confirm the sender frame is adequately grounded.
 - Check for any obstructions preventing the float from moving freely within the tank.
 - Confirm the sender unit's length is correctly adjusted for the tank depth.
- **Unit Not Working Out of the Box:**
 - Double-check all installation steps, especially wiring and grounding.
 - Ensure power is supplied to the gauge and the sending unit.
- **Gauge Size Issue:** Some users have noted the gauge can be bulky. Ensure you have adequate space in your dashboard for installation before attempting to fit it.

6. SPECIFICATIONS

Feature	Detail
Brand	A ABSOPRO
Model Number	aopro240814000924eu
Output Signal	0-190 Ohm
Materials	Metal (Brass components)
Length	650mm / 25.59 inches
Item Weight	1.21 pounds
Package Dimensions	30.51 x 3.15 x 3.15 inches
Application	Boat, Marine, RV, Car, Truck

7. WARRANTY AND SUPPORT

Specific warranty information for this product is not provided in the available documentation. Please refer to the retailer or manufacturer's website for details regarding warranty coverage and customer support options.

For technical assistance or inquiries, it is recommended to contact A ABSOPRO customer service directly through their official channels.