

[Manuals.plus](#) /

› [HYPERLITE](#) /

› HYPERLITE 80W LED Linear Strip Light 8FT Instruction Manual

HYPERLITE HP-SP

HYPERLITE 80W LED Linear Strip Light 8FT Instruction Manual

Model: HP-SP | Brand: HYPERLITE

1. PRODUCT OVERVIEW

The HYPERLITE 80W LED Linear Strip Light 8FT is an energy-efficient and versatile lighting fixture designed for commercial and industrial applications. It offers selectable color temperatures (CCT) and wattage options, along with 1-10V dimmable functionality, providing flexible lighting solutions for various environments.

HYPERLITE 8FT LED linear Strip Light

Super bright, Light Up Your Area



Image 1.1: Overview of the HYPERLITE 8FT LED Linear Strip Light.

Key Features:

- **Energy Efficiency:** Delivers up to 10400 lumens with 130 lumens per watt, saving up to 80% energy compared to fluorescent lights.
- **Selectable CCT & Wattage:** Offers 3 power options (60W, 70W, 80W) and 3 color temperatures (3500K, 4000K, 5000K) for customized lighting.
- **Dimmable Functionality:** Supports 1-10V dimmers to adjust light output from 100% to 10%, enhancing energy savings and visual comfort.
- **Durable Design:** UL certified with a lifespan of 50,000 hours. Features a unique press design for easy cover removal and a screw-lock mechanism for stable suspension.
- **Versatile Installation:** Supports both surface mount and suspended mount methods.

2. SETUP AND INSTALLATION

Before beginning installation, ensure the power supply is disconnected to prevent electrical shock. It is

recommended to have a qualified electrician perform the installation.

2.1 Included Components:

- LED Linear Strip Light (2 units)
- J-box Adapter (x2)
- Screws (x3 for mounting, x2 for other uses)
- Anchors (x3)
- Safety Rope (x2, for suspended mounting)

New Design Solve Your Problems

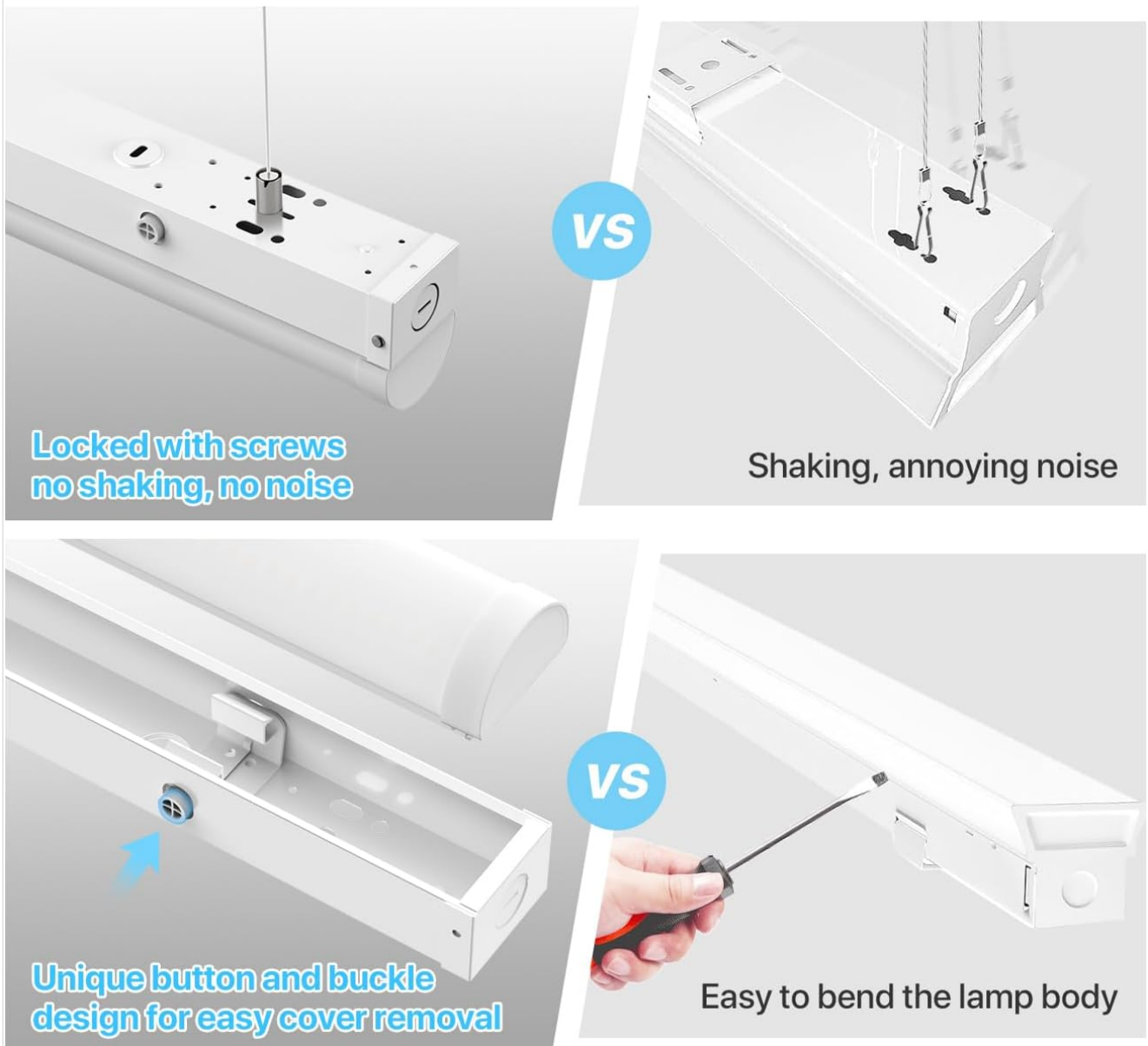


Image 2.1: Dimensions and included accessories for the HYPERLITE LED Linear Strip Light.

2.2 Installation Methods:

The HYPERLITE LED Linear Strip Light supports two primary installation methods: Surface Mount and Suspended Mount.

Choose Between 2 Installation Methods



Surface Mount

Mount Plate Included
keep it looking nice



Suspended Mount

New design, no shaking
more stable

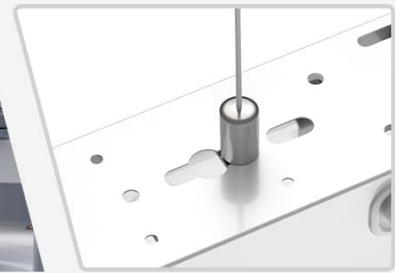


Image 2.2: Visual representation of surface mount and suspended mount installation options.

Surface Mount:

1. Mark the desired mounting locations on the ceiling or wall.
2. Drill pilot holes and insert anchors if necessary.
3. Secure the mounting plate (if applicable, or directly mount the fixture) using the provided screws.
4. Connect the electrical wiring (Live, Neutral, Ground) to the fixture's terminals. Ensure connections are secure and insulated.
5. Attach the LED linear strip light fixture to the secured mounting plate or directly to the surface.

Suspended Mount:

1. Install ceiling hooks or appropriate mounting hardware at the desired suspension points.
2. Attach the steel suspension ropes to the fixture and then to the ceiling hooks. Adjust the length of the ropes to achieve the desired height.
3. Connect the electrical wiring (Live, Neutral, Ground) to the fixture's terminals, typically through a J-box adapter. Ensure connections are secure and insulated.
4. Verify the fixture is level and securely suspended. The screw-lock mechanism on the fixture ensures stable suspension.

For detailed wiring instructions, consult a qualified electrician or refer to local electrical codes.

3. OPERATING INSTRUCTIONS

The HYPERLITE LED Linear Strip Light offers adjustable settings for both wattage and color temperature (CCT) to suit your specific lighting needs.

3 Colour Temperatures & Wattage

Select the optimal lighting solution



Image 3.1: Switches for selecting color temperature (CCT) and wattage.

3.1 Adjusting Color Temperature (CCT):

Locate the CCT selection switch on the fixture. This switch allows you to choose between three color temperatures:

- **3500K:** Warm White, suitable for a softer, more inviting ambiance.
- **4000K:** Neutral White, ideal for general task lighting and comfortable environments.
- **5000K:** Daylight White, provides bright, crisp light, best for detailed work and high-visibility areas.

Select the desired CCT by sliding the switch to the corresponding position.

3.2 Adjusting Wattage:

Locate the wattage selection switch on the fixture. This switch allows you to choose between three power options:

- **60W:** Lower brightness, suitable for areas requiring less intense illumination or for energy saving.
- **70W:** Medium brightness, a balanced option for various applications.
- **80W:** Maximum brightness, for areas requiring high illumination levels.

Select the desired wattage by sliding the switch to the corresponding position.

3.3 Dimming Function:

This fixture supports 1-10V dimming. To utilize this feature, connect the fixture to a compatible 1-10V dimmer switch (not included). The dimmer allows you to smoothly reduce the light output from 100% down to 10%, providing further control over brightness and energy consumption.

Your browser does not support the video tag.

Video 3.2: Official HYPERLITE video demonstrating the 8FT LED Linear Strip Light in a garage and warehouse setting, highlighting its features and applications.

4. MAINTENANCE

Regular maintenance ensures optimal performance and longevity of your HYPERLITE LED Linear Strip Light.

4.1 Cleaning:

- Ensure the power is off before cleaning.
- Wipe the exterior of the fixture with a soft, damp cloth. Do not use harsh chemicals, abrasive cleaners, or solvents, as these can damage the finish or electrical components.
- Avoid spraying liquids directly onto the fixture.

4.2 Inspection:

- Periodically check for any visible damage to the fixture, wiring, or mounting hardware.
- Ensure all connections remain secure.
- If any damage is found, disconnect power and contact customer support or a qualified electrician for repair.

5. TROUBLESHOOTING

If you encounter issues with your HYPERLITE LED Linear Strip Light, refer to the following common troubleshooting steps:

| Problem | Possible Cause | Solution |
|-------------------------|--|--|
| Light does not turn on | No power supply | Check circuit breaker, wall switch, and wiring connections. |
| Light flickers | Loose wiring connection or incompatible dimmer | Ensure all wiring connections are secure. If using a dimmer, verify it is a compatible 1-10V dimmer. |
| Light is too dim/bright | Incorrect wattage/CCT setting or dimmer adjustment | Adjust the wattage and CCT switches on the fixture. If using a dimmer, adjust its setting. |

| Problem | Possible Cause | Solution |
|---------------------------|--------------------------------|--|
| Inconsistent light output | Faulty fixture or wiring issue | Ensure proper wiring. If the problem persists, contact customer support. |

If these steps do not resolve the issue, please contact HYPERLITE customer support for further assistance.

6. SPECIFICATIONS

| Feature | Detail |
|---------------------------|--|
| Brand | HYPERLITE |
| Model Number | HP-SP |
| Wattage | 60W / 70W / 80W (Selectable) |
| Brightness | Up to 10400 Lumens (at 80W) |
| Efficiency | 130 lm/w |
| Color Temperature (CCT) | 3500K / 4000K / 5000K (Selectable) |
| Voltage | 120-277 Volts |
| Dimming | 1-10V Dimmable |
| Light Source | LED |
| Material | Bronze (Housing) |
| Installation Type | Surface Mount, Suspended Mount |
| Indoor/Outdoor Usage | Indoor |
| Certifications | UL Listed |
| Lifespan | 50,000 hours |
| Item Dimensions L x W x H | 0.96"L x 2.91"W x 3.26"H (Note: This seems to be for a component, not the full 8FT fixture. Actual length is 8FT.) |

7. WARRANTY INFORMATION

The HYPERLITE 80W LED Linear Strip Light 8FT comes with a **5-year warranty**. This warranty covers defects in materials and workmanship under normal use and service.

Please retain your proof of purchase for warranty claims. For specific terms and conditions, or to initiate a warranty claim, please contact HYPERLITE customer support.

8. CUSTOMER SUPPORT

For any questions, technical assistance, or support regarding your HYPERLITE LED Linear Strip Light, please contact our customer service team.

- **Email:** [Insert Manufacturer Email Here]
- **Phone:** [Insert Manufacturer Phone Number Here]
- **Website:** [Visit the HYPERLITE Store on Amazon](#)

Our support team is available to assist you with installation, operation, and any product-related inquiries.