



Manuals.plus /

› Nictemaw /

› Nictemaw Portable Washing Machine Model 5584 User Manual

## Nictemaw 5584

# Nictemaw Portable Washing Machine User Manual

Model: 5584

## 1. INTRODUCTION

Thank you for choosing the Nictemaw Portable Washing Machine. This appliance is designed for convenience and efficiency in various living spaces, including apartments, homes, dorms, and RVs. Please read this manual thoroughly before operation to ensure safe and optimal use of your washing machine. Keep this manual for future reference.

## 2. IMPORTANT SAFETY INSTRUCTIONS

- Always ensure the washing machine is placed on a stable, level surface to prevent vibration and noise during operation.
- Do not operate the machine if the power cord or plug is damaged. Contact qualified service personnel for repair.
- Keep children and pets away from the machine during operation. The child safety lock feature should be activated when not in use.
- Do not wash items that are waterproof or water-resistant, as this may cause abnormal vibrations.
- Unplug the machine from the power outlet before cleaning or performing any maintenance.
- Ensure proper water supply and drainage connections are secure to prevent leaks.

## 3. PRODUCT OVERVIEW

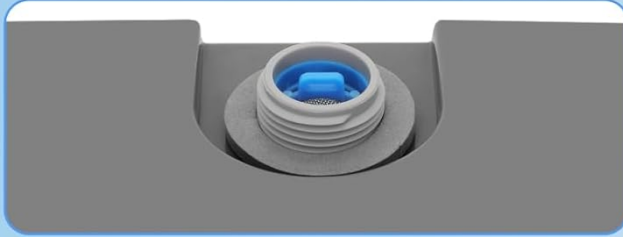
The Nictemaw Portable Washing Machine features a compact design with a 2.4 cubic feet capacity, capable of

washing up to 17.8 lbs of laundry. It includes 10 wash programs, 8 water levels, and a built-in drain pump for flexible installation.



Figure 1: Control Panel with 10 Washing Programs, 8 Water Levels, and LED Display.

## Machine Details



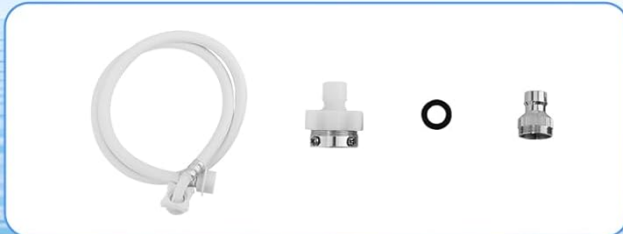
◀◀ Water Inlet

Removable Filter ▶▶



◀◀ Side Handles

Adjustable Feet ▶▶



◀◀ Accessories List

Figure 2: Machine details including water inlet, removable filter, side handles, adjustable feet, and accessories list.

## 4. SETUP AND INSTALLATION

### 4.1 Unpacking

- Carefully remove the washing machine from its packaging.
- Check for any damage during transit. If damage is found, do not operate the machine and contact customer support.
- Remove all packing materials, including the bottom cover and any internal foam.

### 4.2 Leveling the Machine

- Place the washing machine on a firm, level surface.
- Adjust the leveling feet at the bottom of the machine to ensure it is perfectly stable and does not wobble. This

minimizes vibration and noise.

### 4.3 Water Supply Connection

- Connect the water inlet hose (provided) to a suitable water faucet. Ensure the connection is tight to prevent leaks.
- Attach the other end of the water inlet hose to the water inlet port on the top-rear of the washing machine.

### 4.4 Drain Hose Connection

The machine features a built-in drain pump for flexible drainage options.

- Ensure the drain hose is securely attached to the machine's drain outlet.
- Position the drain hose to direct wastewater into a sink, bathtub, or floor drain. The built-in pump allows for upward or distant drainage.



Figure 3: Illustration of the built-in drain pump and extended drain hose for flexible installation.

### 4.5 Power Connection

- Plug the power cord into a grounded electrical outlet.

## 5. OPERATING INSTRUCTIONS

### 5.1 Loading Laundry

- Open the top lid of the washing machine.
- Place clothes loosely into the drum, ensuring not to overload. The maximum capacity is 17.8 lbs.
- Add appropriate detergent directly into the drum with the clothes.
- Close the top lid securely.

# 17.8LBS Large Capacity

Wash all clothes at once, meet the family's needs



Put in clothes



One-button Start



Full-Auto Laundry

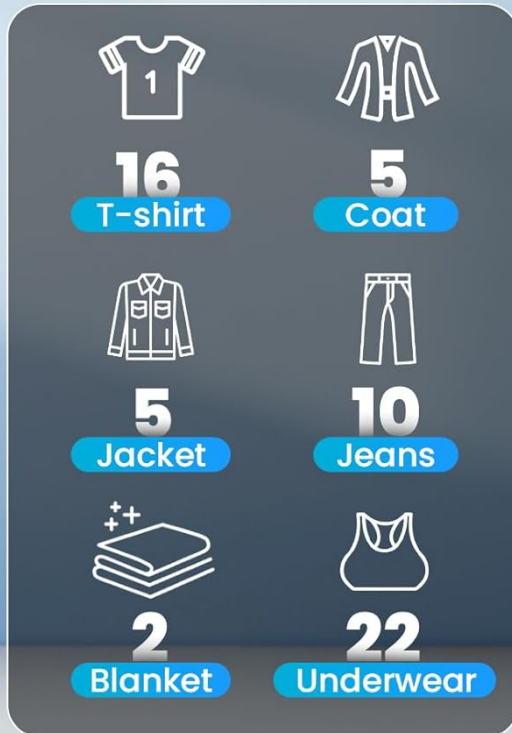


Figure 4: Visual guide for loading capacity, showing examples like 16 T-shirts or 2 blankets.

## 5.2 Power On and Program Selection

- Press the **POWER** button to turn on the machine.
- Press the **PROGRAM** button repeatedly to cycle through the 10 pre-set wash programs: Normal, Standard, Quick, Large, Air Dry, Soak, Wash, Spin, Wash+Rinse, Rinse+Spin. The selected program will be indicated on the LED display.

## 5.3 Water Level Selection

- Press the **WATER LEVEL** button to select one of the 8 adjustable water levels (High, Medium, Low, etc.) to match your load size. This helps conserve water and energy.

## 5.4 Starting the Wash Cycle

- Once the desired program and water level are selected, press the **START/PAUSE** button to begin the wash cycle.
- The transparent lid allows you to monitor the washing process.

## 5.5 Child Safety Lock

- To activate the child safety lock, press and hold the **WATER LEVEL** and **PROGRAM** buttons simultaneously for a few seconds. This prevents accidental operation by children.



Figure 5: The child safety lock feature helps prevent unintended use.

## 5.6 Delay Start Function

- The machine supports a 24-hour smart appointment (delay start) function. Refer to the control panel for specific instructions on setting a delayed start time.

# 24 Hours Wash Appointment

No need to wait to sleep or go out



Wash clothes before going to bed,  
Hang clothes after waking up



Hang clothes after going back home



Wash clothes during work hours

Figure 6: The 24-hour wash appointment feature allows scheduling wash cycles in advance.

## 6. WASH PROGRAMS

The Nictemaw Portable Washing Machine offers 10 pre-set wash programs to cater to various fabric types and cleaning needs:

1. **Normal:** For everyday laundry with moderate soil.
2. **Standard:** A balanced cycle for general washing.
3. **Quick:** A shorter cycle for lightly soiled items or small loads.
4. **Large:** Designed for larger items or heavily soiled loads.
5. **Air Dry:** A spin-only cycle to remove excess water and aid in faster drying.
6. **Soak:** For pre-soaking heavily soiled items before the main wash.

7. **Wash:** A wash-only cycle without rinsing or spinning.
8. **Spin:** A spin-only cycle to extract water.
9. **Wash+Rinse:** Combines washing and rinsing without a final spin.
10. **Rinse+Spin:** For rinsing and spinning items that have already been washed.

## 7. WATER LEVELS

Optimize water usage with 8 adjustable water levels. Select the level that corresponds to the size of your laundry load to save water and energy.

- Higher water levels are suitable for larger loads or items requiring more water for thorough cleaning.
- Lower water levels are ideal for smaller loads, reducing water consumption.

## 8. MAINTENANCE

### 8.1 Cleaning the Filter

- Regularly check and clean the removable filter located inside the drum.
- Remove any lint, debris, or foreign objects from the filter to maintain optimal washing performance and prevent blockages.

### 8.2 Exterior Cleaning

- Wipe the exterior of the machine with a soft, damp cloth.
- Avoid using abrasive cleaners or solvents that could damage the surface.

### 8.3 Interior Cleaning

- Periodically run a 'Tub Clean' cycle (if available) or a hot water wash with a washing machine cleaner to prevent odor and residue buildup.

## 9. TROUBLESHOOTING

If you encounter issues with your washing machine, refer to the following common problems and solutions:

Problem	Possible Cause	Solution
Machine does not start	Power cord unplugged; Lid not closed; Child lock active.	Check power connection; Ensure lid is fully closed; Deactivate child lock.
Water leakage	Loose water inlet/drain hose; Overloading; Improper leveling.	Tighten hose connections; Reduce load size; Adjust leveling feet.
Excessive vibration/noise	Uneven load; Machine not level; Shipping bolts not removed.	Rearrange clothes evenly; Adjust leveling feet; Ensure all shipping bolts are removed.
Clothes not clean	Overloading; Insufficient detergent; Incorrect wash program.	Reduce load; Use correct amount of detergent; Select appropriate program.
Water not draining	Drain hose kinked/blocked; Drain pump malfunction.	Check and clear drain hose; Contact support if pump is faulty.

If the problem persists after trying these solutions, please contact Nictemaw customer support.

## 10. SPECIFICATIONS

Feature	Detail
Brand	Nictemaw
Model Number	5584
Capacity	17.8 Pounds (2.4 Cu.ft)
Product Dimensions (D x W x H)	18.7 x 18.5 x 33 inches
Installation Type	Freestanding
Special Features	Adjustable Leveling Legs, Child Lock, Delay Start, High Efficiency, Vibration Reduction, Built-in Drain Pump
Color	Grey
Control Console	Touch
Standard Cycles	10
Access Location	Top Load
Material Type	Plastic, Stainless Steel
Included Components	Drain Hose

# Suitable for Various Occasions



RV Camping



Apartments



Dorms



Home

Figure 7: Product dimensions and examples of suitable usage scenarios like RVs, apartments, dorms, and homes.

## 11. WARRANTY AND SUPPORT

This Nictemaw Portable Washing Machine comes with one year of product assistance. If you have any questions or require support while using the compact washing machine, please send us a message via Amazon. We are committed to responding as soon as possible to assist you.