

## Cleer ARC 3 sports pro

# Cleer ARC 3 Sports Pro Open Ear Headphones User Manual

Model: ARC 3 Sports Pro

## INTRODUCTION

---

Welcome to the user manual for your Cleer ARC 3 Sports Pro Open Ear Headphones. These headphones are designed for comfort and high-quality audio, featuring an open-ear design, advanced sound technologies, and health tracking capabilities. This manual provides essential information for setup, operation, maintenance, and troubleshooting to ensure optimal performance and longevity of your device.



Image: Cleer ARC 3 Sports Pro headphones and their smart charging case.

## PACKAGE CONTENTS

---

Before you begin, please ensure all items are present in the package:

- Cleer ARC 3 Sports Pro Open Ear Headphones
- Charging Case
- Charging Cable (USB-C to USB-A)
- User Manual

## SETUP

---

### 1. Charging the Headphones and Case

Before first use, fully charge your Cleer ARC 3 Sports Pro headphones and charging case. The charging case provides additional battery life for the headphones.

- Place the headphones into the charging case.
- Connect the USB-C end of the charging cable to the charging case and the USB-A end to a power adapter (not included) or a computer's USB port.
- The case's display will indicate charging status. A full charge takes approximately 2 hours.

# 40 Hr



Up to <b>40 hrs</b> Playtime	A Quick <b>10 min</b> charge gives <b>2 hrs</b> of listening time	Additional <b>32 hrs</b> with case
------------------------------------	---	--

Image: Visual representation of the 40-hour total battery life, including 8 hours from headphones and 32 hours from the charging case.

## 2. Initial Pairing with a Device

The Cleer ARC 3 Sports Pro headphones support Bluetooth 5.4 for stable connectivity and multi-point connection, allowing pairing with two devices simultaneously.

### Option 1: First Pairing (Recommended)

1. Remove the protective film from the headphones.
2. Press and hold the Multi-Function Button (MFB) on both headphones for 2 seconds to enter pairing mode.

3. On your device (smartphone, tablet, laptop), go to Bluetooth settings and select "Cleer ARC 3 Sports Pro" from the list of available devices.

### Option 2: Touch Pad Pairing

1. Tap the touch pad on either headphone 5 times.
2. Wait for the LED indicators to blink red and white, indicating pairing mode.
3. On your device, select "Cleer ARC 3 Sports Pro" from the Bluetooth device list.

### Option 3: Charging Case Pairing

1. Place both headphones into the charging case and close the lid.
2. Open the charging case. On the case's display, navigate to the "Auxiliary" page and select "Pairing Mode."
3. On your device, select "Cleer ARC 3 Sports Pro" from the Bluetooth device list.

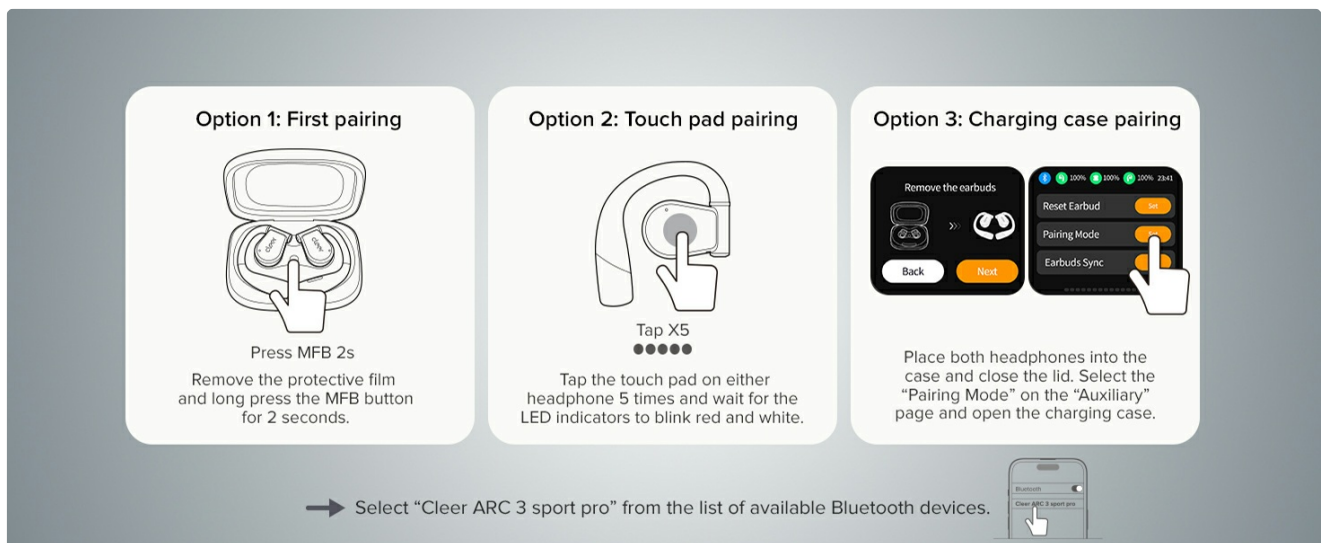


Image: Step-by-step visual guide for three different pairing methods: first pairing, touch pad pairing, and charging case pairing.

## 3. Installing the Cleer+ App

For full functionality, including EQ settings, Dolby Sound Effects, and health tracking, download the Cleer+ app from your device's app store.

- Search for "Cleer+" in your app store.
- Download and install the app.
- Open the app and follow the on-screen instructions to connect your ARC 3 Sports Pro headphones.



# Cleer+ App



Create a Personalized workout plan  
tailored to your real-time data

Image: A user interacting with the Cleer+ app on a smartphone, demonstrating personalized workout plan creation based on real-time data.

## OPERATING INSTRUCTIONS

---

### 1. Wearing the Headphones

The ARC 3 Sports Pro features an adjustable, soft ear hook design for a secure and comfortable fit during various activities.

- Gently place the ear hook over your ear.



- Adjust the earbud speaker to rest comfortably near your ear canal without entering it.
- Ensure a snug fit for optimal sound and heart rate tracking.

# Open-Ear Comfort

Ultra light open-ear design for all-day comfort

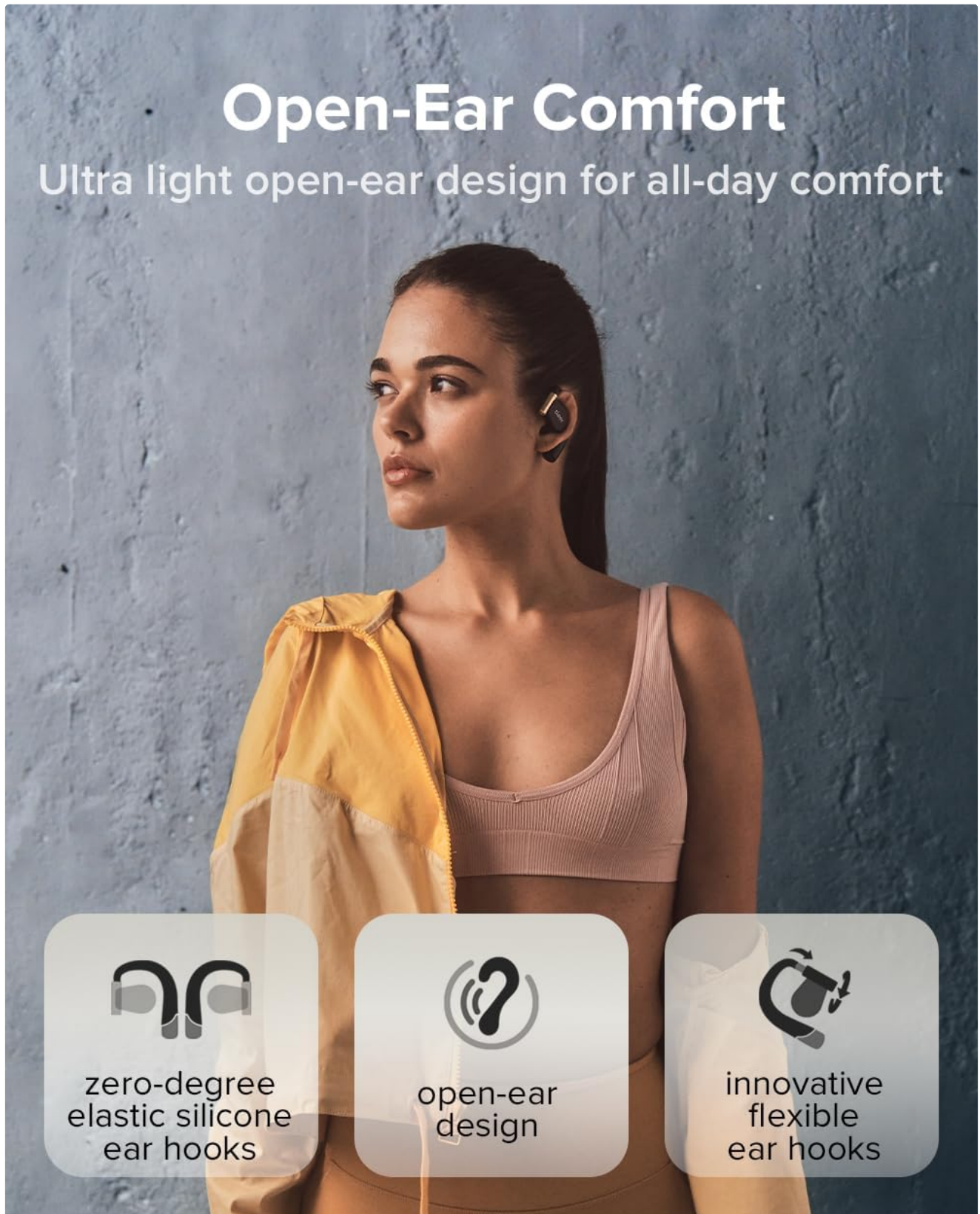


Image: A woman wearing the Cleer ARC 3 Sports Pro headphones, illustrating the open-ear design and comfortable, flexible ear hooks.

## 2. Controls

The headphones offer multiple control methods for convenience.

### Touch Controls (on headphones)

The touch pads on each earbud allow for various functions:

- **Play/Pause:** Single tap.
- **Next Track:** Double tap right earbud.
- **Previous Track:** Double tap left earbud.
- **Answer/End Call:** Single tap during an incoming call.
- **Reject Call:** Press and hold for 2 seconds during an incoming call.
- **Activate Voice Assistant:** Triple tap.



Image: A diagram showing a finger tapping the earbud's touch surface, indicating touch control functionality.

## Volume Control

Adjust volume using one of the following methods:

- **Via Phone:** Adjust volume directly on your connected mobile device.
- **Via Charging Case:** Use the intuitive FHD display on the charging case to access volume controls.
- **Via Touch Pad:** Double tap and hold the second tap on the left earbud to decrease volume, or on the right earbud to increase volume.
- **Via Voice Control:** Use voice commands like "Volume up" or "Volume down" when connected.

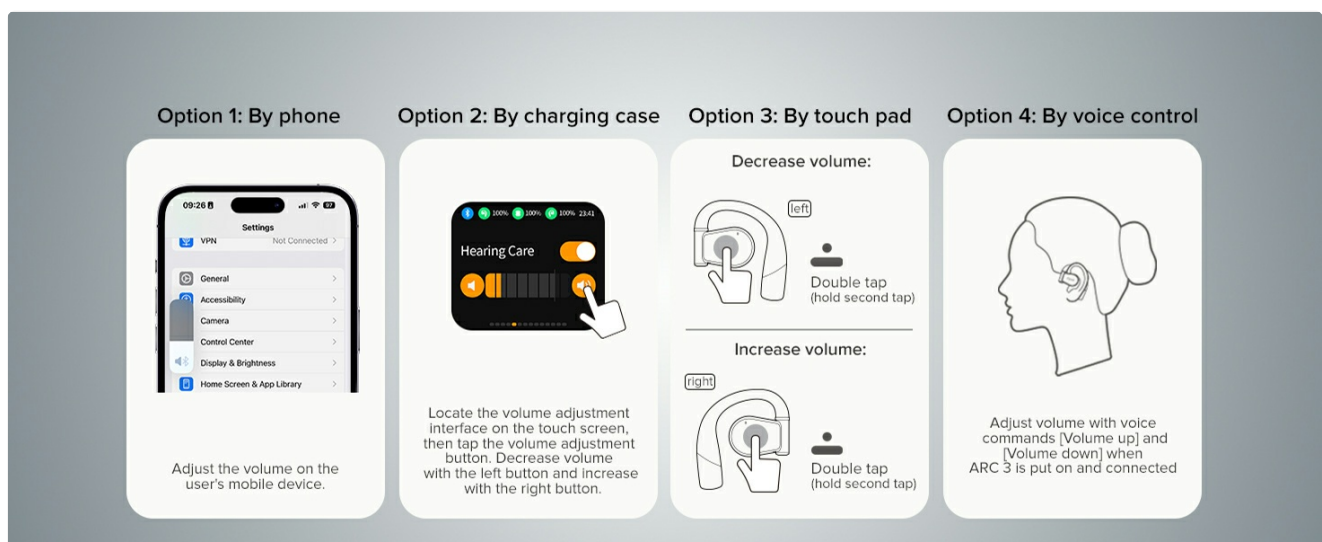


Image: Visual guide demonstrating four different methods for adjusting volume on the Cleer ARC 3 Sports Pro headphones.

## Smart Motion Control (for Calls)

Enable motion controls via the Cleer+ App for hands-free call management.

1. Open the Cleer+ App.
2. Tap [Motion Control] on the ARC 3 main page.
3. Toggle the button to turn on/off [Call Control].

- **Pick Up Call:** Nod head twice.
- **Hang Up/Reject Call:** Shake head twice.

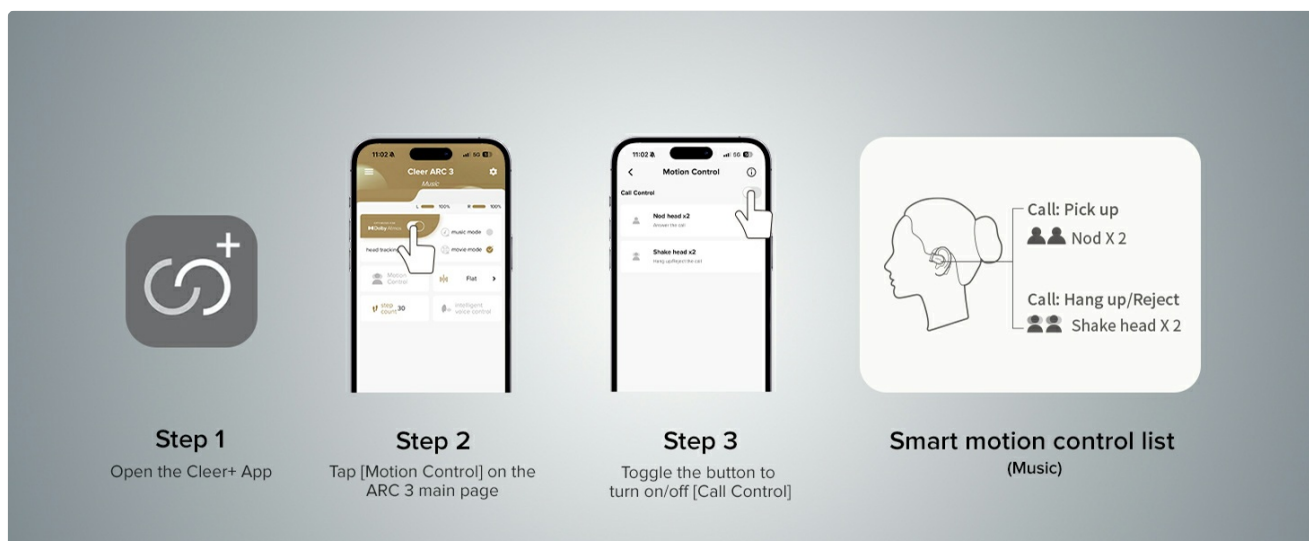


Image: Instructions for activating and using smart motion controls for answering and rejecting calls through head gestures.

### 3. Audio Features

The ARC 3 Sports Pro headphones offer advanced audio technologies for an immersive listening experience.

- **Dolby Atmos & Snapdragon Sound:** Experience crystal clear spatial audio with 16.2mm drivers. Optimized for Dolby Atmos head tracking.
- **Auto Volume Control:** Automatically adjusts audio levels based on your surroundings for consistent listening.
- **Clear Call Quality:** Features crystal clear voice capture and noise-cancelling microphones for calls.

#### Controlling Dolby Audio

You can enable or disable Dolby Audio through the following methods:

- **Via Cleer+ App:** Open the Cleer+ App and toggle the Dolby Audio setting on the main page.
- **Via Charging Case:** On the charging case's touch screen, locate the Dolby Audio interface and toggle the [OPTIMIZED FOR Dolby Atmos] button.
- **Via Touch Pad:** Tap and hold the touch pad of either headphone for more than 2 seconds.

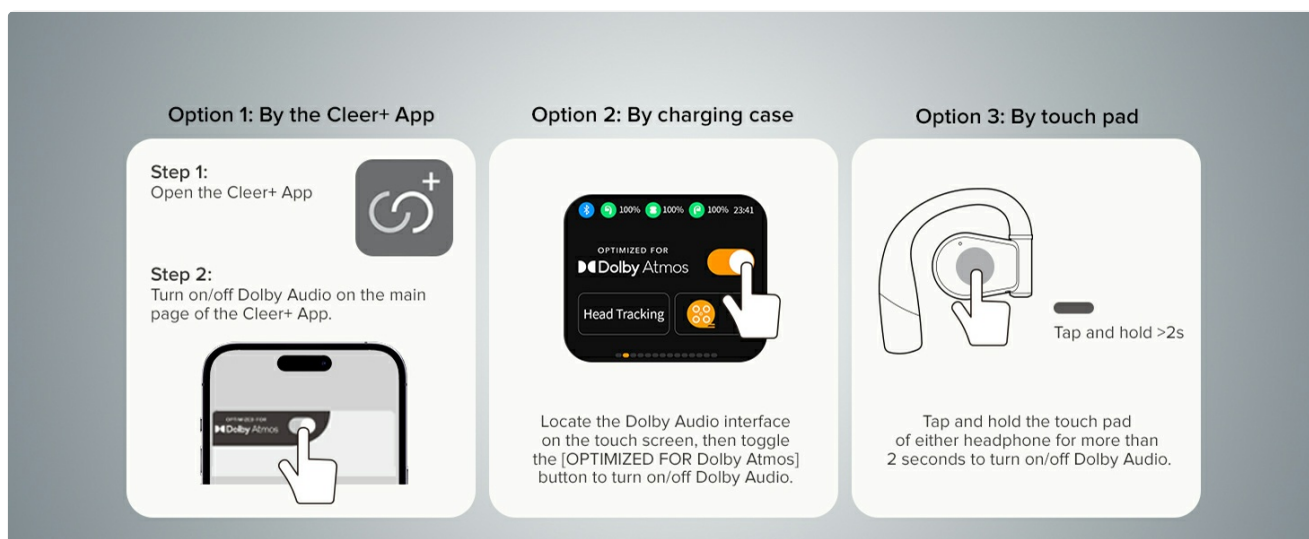


Image: Visual instructions for enabling or disabling Dolby Audio using the Cleer+ app, the charging case display, or the headphone touch pads.



## 4. Health Tracking

The ARC 3 Sports Pro headphones include heart rate and blood oxygen detection, which can be tracked in real-time during workouts or daily activities via the Cleer+ App.

- Ensure the headphones are properly worn for accurate readings.
- Open the Cleer+ App to view your health metrics and create personalized workout plans.



# Accurate Workout HeartRate Tracking

**With Cleer+** 

track heart rate and oxygen levels in real time during workouts or daily activities

The image shows a man with a beard and brown hair, wearing a dark blue jacket and a large tan backpack. He is looking out over a blue ocean under a clear sky. A smartphone is overlaid on the left side of the image, displaying the Cleer+ app interface. The app shows a heart rate icon, a message 'Your running goal has not yet been met', a 'Training effect' section with a bar chart, and a 'Go running' button. The background of the entire advertisement is a scenic view of the ocean and a rocky shore.

Image: A man outdoors, demonstrating the use of the Cleer+ app for accurate workout heart rate tracking.

## 1. Cleaning

Regular cleaning helps maintain the performance and hygiene of your headphones.

- Wipe the headphones and charging case with a soft, dry, lint-free cloth.
- Avoid using abrasive materials, solvents, or cleaning sprays.
- The charging case features UV-C light sterilization for the earbuds when placed inside. Ensure the case is closed for this function.

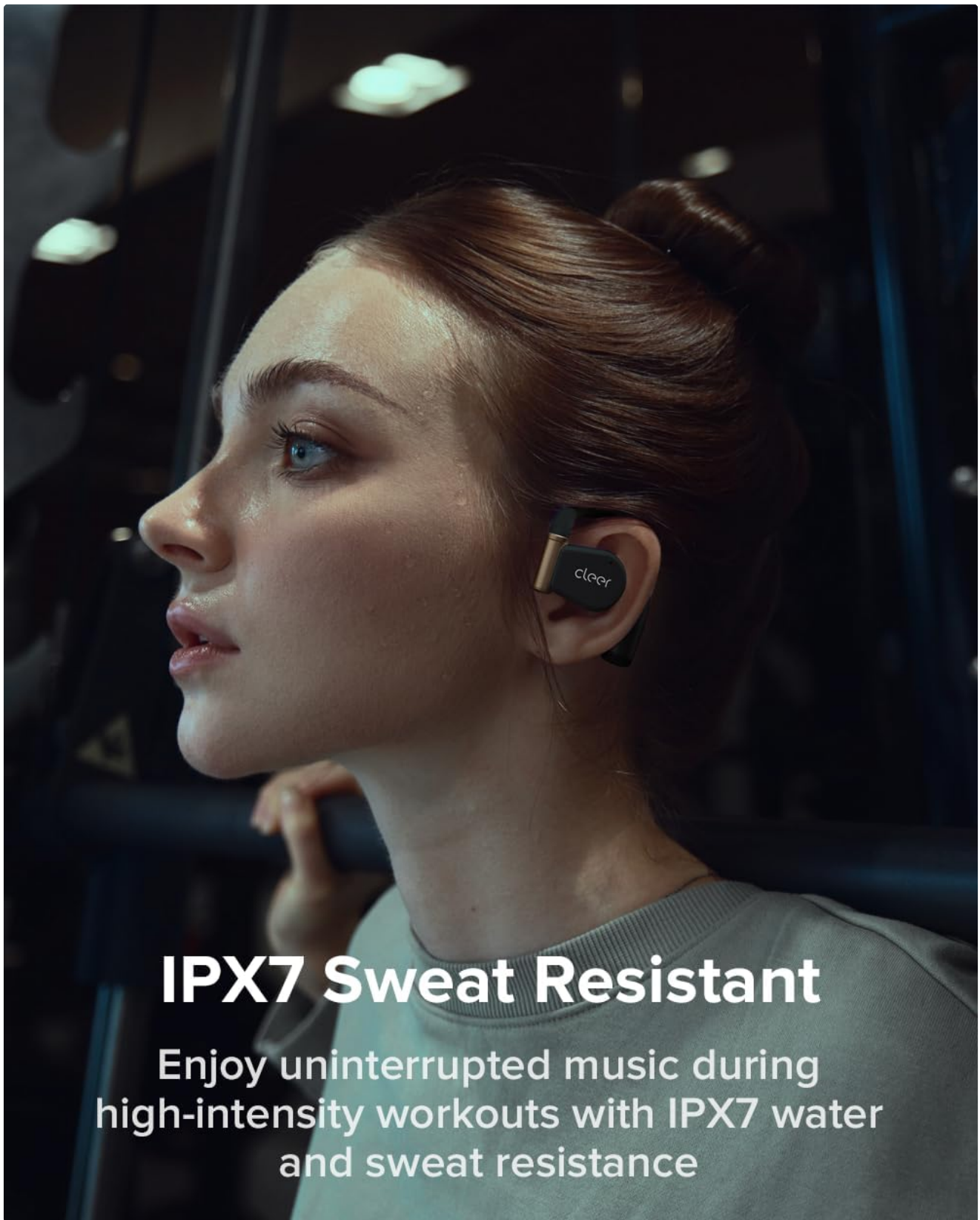


Image: A diagram illustrating the UV-C sterilization process within the charging case for the earbuds.

## 2. Water Resistance (IPX7)

The ARC 3 Sports Pro headphones are IPX7 waterproof, meaning they can withstand immersion in up to 1 meter of water for 30 minutes. This makes them resistant to sweat, rain, and accidental splashes.

- Do not intentionally submerge the charging case, as it is not waterproof.
- After exposure to water, ensure the headphones are completely dry before placing them back in the charging case to prevent damage.



## IPX7 Sweat Resistant

Enjoy uninterrupted music during high-intensity workouts with IPX7 water and sweat resistance

Image: A woman exercising, demonstrating the IPX7 sweat-resistant capability of the headphones for uninterrupted use during intense workouts.

### TROUBLESHOOTING

---

If you encounter issues with your Cleer ARC 3 Sports Pro headphones, refer to the following common solutions:

Problem	Possible Solution
---------	-------------------

Problem	Possible Solution
Headphones not pairing	<ul style="list-style-type: none"><li>• Ensure headphones are charged.</li><li>• Turn off and on Bluetooth on your device.</li><li>• Try all three pairing options described in the Setup section.</li><li>• Forget the device in your Bluetooth settings and try pairing again.</li></ul>
No sound or low volume	<ul style="list-style-type: none"><li>• Check volume levels on both headphones and connected device.</li><li>• Ensure headphones are properly connected.</li><li>• Re-pair the headphones.</li></ul>
Poor sound quality	<ul style="list-style-type: none"><li>• Ensure headphones are worn correctly and securely.</li><li>• Check for obstructions between headphones and device.</li><li>• Disable or enable Dolby Audio via the app or case to see if it improves.</li></ul>
Headphones not charging	<ul style="list-style-type: none"><li>• Ensure charging cable is securely connected.</li><li>• Try a different charging cable or power source.</li><li>• Clean charging contacts on headphones and case.</li></ul>
Heart rate tracking inaccurate	<ul style="list-style-type: none"><li>• Ensure headphones are worn snugly and correctly on the ear.</li><li>• Clean the sensor area on the headphones.</li><li>• Ensure the Cleer+ App is updated and running.</li></ul>

## SPECIFICATIONS

Feature	Detail
Model Name	Cleer Audio ARC 3 Sports Pro
Connectivity Technology	Bluetooth, Wireless
Bluetooth Version	5.4
Ear Placement	Open Ear
Earpiece Shape	Hook
Audio Driver Type	Dynamic Driver (16.2mm)
Frequency Range	20 Hz - 20,000 Hz
Battery Life (Headphones)	8 Hours (single charge)
Battery Life (with Case)	Up to 40 Hours total (8 hrs + 32 hrs from case)
Charging Time	2 Hours



Feature	Detail
Water Resistance Level	IPX7 (Water Resistant)
Control Type	Touch Control, Volume Control, App Control, Voice Control
Health Tracking	Heart Rate, Blood Oxygen Detection
Item Weight (Headphones)	12 grams (per earbud)
Charging Case Weight	130 Grams
Material	Metal, Plastic, Silicone
Compatible Devices	Cellphones, Desktops, Laptops, Tablets

## WARRANTY AND SUPPORT

### Warranty Information


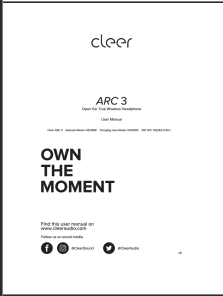
Cleer products are designed and manufactured to the highest quality standards. For specific warranty details, including coverage period and terms, please refer to the warranty card included with your product or visit the official Cleer website. Keep your proof of purchase for warranty claims.


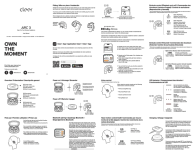


### Customer Support

- If you require further assistance or have questions not covered in this manual, please contact Cleer customer support:
- **Online Support:** Visit the official Cleer website for FAQs, support articles, and contact forms.
  - **Email Support:** Refer to your product packaging or the Cleer website for the appropriate support email address.
  - **Phone Support:** Check the Cleer website for regional phone support numbers.

When contacting support, please have your product model number (ARC 3 Sports Pro) and proof of purchase readily available.

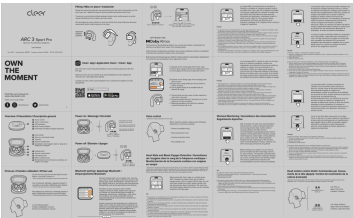
### Related Documents - ARC 3 sports pro

	<p><a href="#">Cleer ARC II Sport Smart Open Ear True Wireless Headphones User Manual</a></p> <p>Comprehensive user manual for the Cleer ARC II Sport Smart Open Ear True Wireless Headphones, covering setup, features, controls, charging, sterilization, factory reset, LED behavior, specifications, maintenance, and warranty information.</p>
	<p><a href="#">Cleer ARC 3 Open Ear True Wireless Headphones User Manual</a></p> <p>User manual for the Cleer ARC 3 Open Ear True Wireless Headphones, detailing setup, fitting, controls, features like Dolby Atmos, charging, maintenance, troubleshooting, and warranty information.</p>

	<p><a href="#">Cleer ARC II Smart Open Ear True Wireless Headphones User Manual</a></p> <p>User guide for the Cleer ARC II Smart Open Ear True Wireless Headphones, detailing fitting instructions, app usage, Bluetooth pairing, earbud controls for playback and calls, head gesture controls, volume adjustments, LED indicator behavior, charging information, technical specifications, warranty details, and regulatory notices.</p>
	<p><a href="#">Cleer ARC 3 Open-Ear True Wireless Headphones User Manual</a></p> <p>User manual for the Cleer ARC 3 Open-Ear True Wireless Headphones, covering setup, controls, features like Dolby Atmos, voice control, charging, troubleshooting, maintenance, and warranty information.</p>
	<p><a href="#">Cleer ARC 3 Max True Wireless Headphones User Manual</a></p> <p>Comprehensive user manual for the Cleer ARC 3 Max True Wireless Headphones, covering setup, features like Dolby Atmos and Head Tracking, workout monitoring, controls, troubleshooting, maintenance, and warranty information.</p>
	<p><a href="#">Cleer ARC 3 Pro Sport AI Open Ear Wireless Headphones User Manual</a></p> <p>Comprehensive user manual for Cleer ARC 3 Pro Sport AI Open Ear True Wireless Headphones. Learn about features like Dolby Atmos, voice control, health monitoring, and workout tracking. Includes setup, operation, and troubleshooting guides.</p>

Documents - Cleer – ARC 3 sports pro

[\[pdf\]](#) User Manual Quick Start Guide



CLEER US ARC 3 Sport Pro QSG v1 20241011 17 map 2025 r — User Manual Cleer Earbuds Model GS8801E Charging case GS1399C EST NO 102353 CHN 1 Find this user manual on cleeraudio Follow us US 03 |||

ARC 3 Sport Pro Open Ear True Wireless Headphone User Manual Cleer ARC 3 Earbuds Model: GS8801E Charging case Model: GS1399C EST NO: 102353-CHN-1 Find this user manual on [www.cleeraudio.com](http://www.cleeraudio.com) Follow us on social media CleerSound CleerAudio v1 Overview Prsentation Descripcin general 1 Touch... lang:es score:37 filesize: 2.69 M page\_count: 2 document date: 2024-10-11