

[manuals.plus](#) /

› [iGPSPORT](#) /

› [iGPSPORT VS800S Smart Bike Light Instruction Manual](#)

iGPSPORT VS800S

iGPSPORT VS800S Smart Bike Light Instruction Manual

Model: VS800S (800 Lumens)

1. INTRODUCTION

Thank you for choosing the iGPSPORT VS800S Smart Bike Light. This manual provides essential information for the proper setup, operation, and maintenance of your new bicycle headlight. Please read it thoroughly before use to ensure optimal performance and safety.



Figure 1: iGPSPORT VS800S Smart Bike Light with included handlebar mount.

2. SETUP

2.1 Package Contents

Verify that all items are present in the package:

- 1 x VS800S Bike Light
- 1 x Handlebar Mount
- 1 x USB Type-C Charge Cable
- 1 x User Manual

2.2 Charging the Device

Before first use, fully charge the bike light. Connect the provided USB Type-C cable to the charging port on the light and to a compatible USB power source. The charging time is approximately 2 hours for a full charge.

2.3 Installation

The VS800S bike light offers versatile installation options:

- **Handlebar Mounting:** Attach the handlebar mount to your bicycle's handlebar. The light can be installed either on top of the handlebars or hung underneath, saving space and ensuring stability on bumpy roads.

- **Adjustable Angle:** The mount allows for 180° rotation, enabling you to adjust the light's beam direction as needed.



Figure 2: Detailed installation diagram illustrating both top-mounted and underneath-mounted configurations, along with the Type-C charging port.

3. OPERATING INSTRUCTIONS

3.1 Power On/Off

Press and hold the power button located on the top of the light to turn it on or off.

3.2 Light Modes

The VS800S features 6 distinct light modes to suit various cycling conditions. Cycle through the modes by short-pressing the power button:

- **High:** 800 lumens, 5 hours runtime
- **Medium:** 400 lumens, 7 hours runtime
- **Low:** 200 lumens, 10 hours runtime
- **Day Flash:** 0-400 lumens, 50 hours runtime
- **Night Flash:** 0-150 lumens, 100 hours runtime
- **SOS:** 0-250 lumens, 24 hours runtime

6 Light Modes

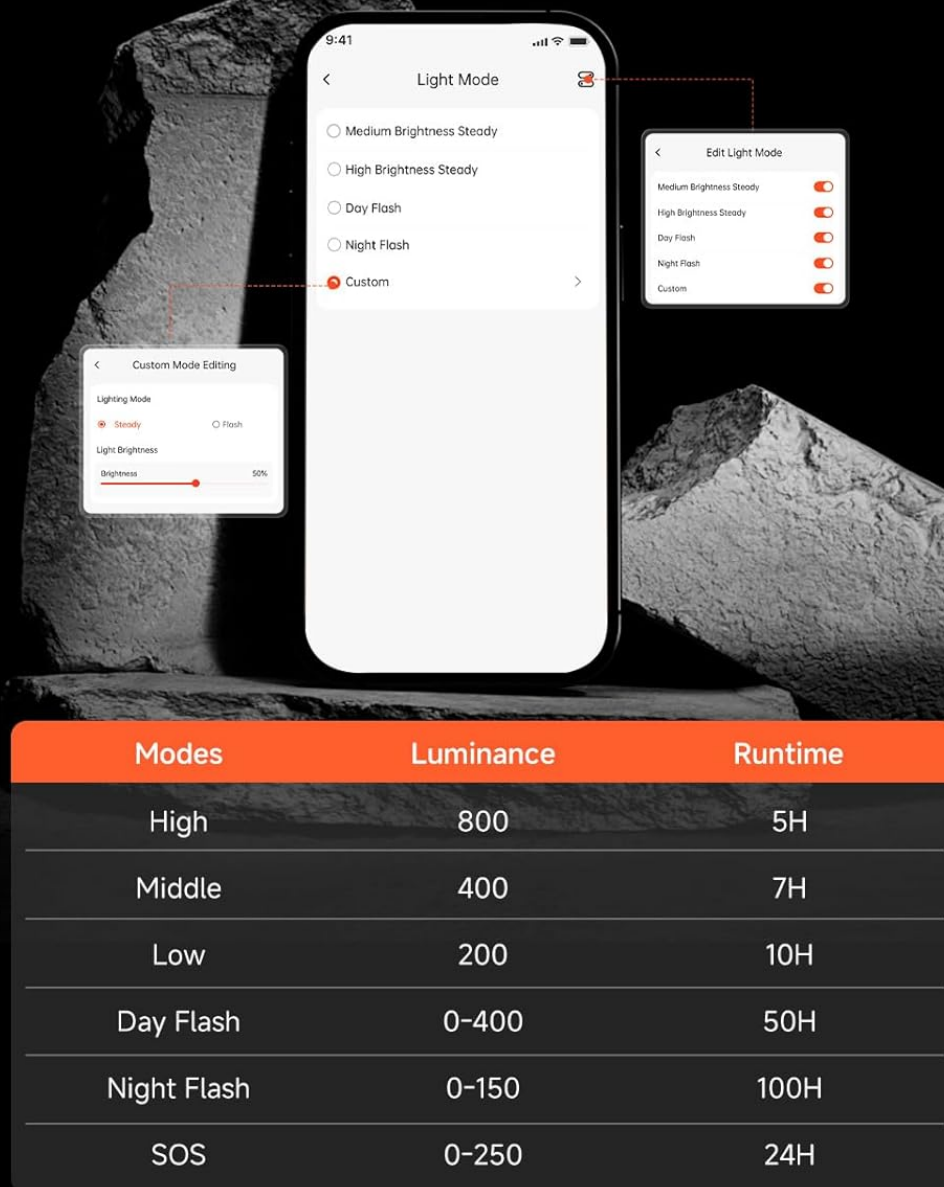


Figure 3: Overview of the 6 available light modes, including brightness levels and battery runtimes.

3.3 Smart Functions

The VS800S incorporates intelligent features for enhanced convenience and safety:

- **Automatic Operation:** The light automatically activates when you start cycling and enters sleep mode when you stop.
- **Light Sensing:** It intelligently detects ambient light conditions, automatically turning on in dark environments or tunnels and turning off to conserve power in sufficient light.
- **Speed Adaptive Brightness:** When paired with an iGPSPORT bike computer, the light intelligently brightens as your cycling speed increases and dims as your speed decreases.

Brightness adjusts with speed

The bike light intelligently brightens as your cycling speed increases and dims as your speed decreases



Figure 4: Illustration of the speed-adaptive brightness feature, where light intensity changes based on cycling speed.

3.4 App and Bike Computer Connectivity

Enhance your experience by connecting the VS800S to the official iGPSPORT APP or an iGPSPORT bike computer:

- **Real-time Battery Status:** View accurate battery level and predicted battery life.
- **Customization:** Adjust sleep time, configure smart features, and set custom light modes.
- **Synchronized Power Off:** When paired with a bike computer, the light can automatically power off with the computer, eliminating the need for manual operation at the end of your ride.

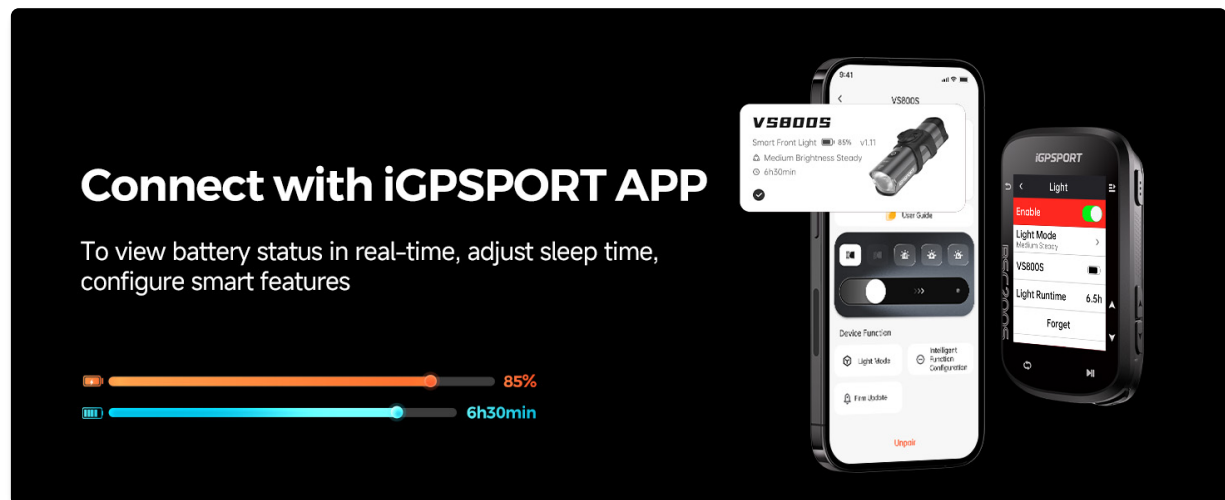


Figure 5: The iGPSPORT app interface displaying battery status and options for customizing light settings.

Your browser does not support the video tag.

Video 1: Official product video demonstrating the features and usage of the iGPSPORT VS800S Smart Bike Headlight.

4. MAINTENANCE

4.1 Waterproofing

The VS800S is IPX6 waterproof, making it suitable for riding in heavy rain. Ensure the Type-C charging port cover is securely closed to maintain its waterproof integrity.

IPX6 Waterproof

Ride with no fear even in heavy rain weather



Figure 6: The IPX6 waterproof rating ensures the bike light can withstand heavy rain, allowing for worry-free riding in wet conditions.

4.2 Smart Temperature Control

The device features smart temperature control, which automatically reduces brightness if the internal temperature exceeds 50°C to prevent overheating and prolong component life.

Smart Temperature Control

Automatically reduces brightness when the temperature exceeds 50°C

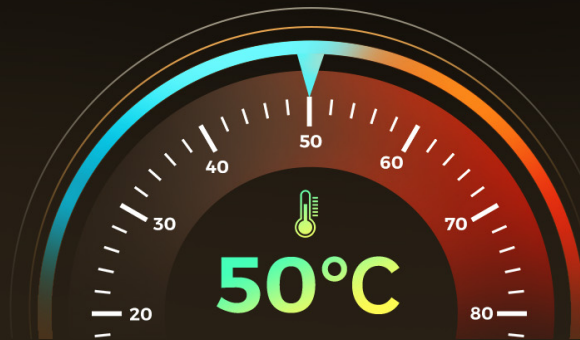


Figure 7: Visual representation of the smart temperature control system, which adjusts brightness to maintain optimal operating temperature.

5. TROUBLESHOOTING

If you encounter issues with your iGPSPORT VS800S Smart Bike Light, please refer to the following common solutions:

- **Light not turning on:** Ensure the battery is fully charged. Press and hold the power button for a few seconds.
- **Connectivity issues:** Make sure Bluetooth is enabled on your smartphone or bike computer. Restart both devices and try pairing again.
- **Light modes not changing:** Short-press the power button to cycle through modes. If unresponsive, try resetting the device by holding the power button for an extended period (e.g., 10 seconds).
- **Inaccurate battery display:** Ensure the light is properly connected to the iGPSPORT APP or bike computer for real-time data.

6. SPECIFICATIONS

Feature	Detail
Dimensions	108 x 31 x 29 mm
Weight	157g
Body Material	Aluminum Alloy
Charge Port	Type-C
Charge Time	2 hours
Battery Capacity	4000mAh
Brightness	800 Lumens (Max)
Water Resistance Level	IPX6 Waterproof
Mounting Type	Handlebar Mount
Number of Settings	6 Light Modes
Operating Temperature Range	-10°C to 50°C

7. WARRANTY & SUPPORT

The iGPSPORT VS800S Smart Bike Light comes with a **1 Year Warranty** from the date of purchase. For technical support, warranty claims, or any inquiries, please visit the official iGPSPORT website or contact their customer service.

For more information and support, visit the [iGPSPORT Store on Amazon](#).