

Weochi HDV900

Weochi 4K 60FPS 48MP Video Camera Camcorder HDV900 User Manual

Model: HDV900

INTRODUCTION

This manual provides detailed instructions for the operation and maintenance of your Weochi 4K 60FPS 48MP Video Camera Camcorder HDV900. Please read this manual thoroughly before using the camera to ensure proper function and to maximize your recording experience. This camcorder is designed for high-quality video recording and photography, featuring advanced capabilities such as 4K Ultra HD video, 48 Megapixel images, and a versatile 3.0-inch rotating screen.

WHAT'S IN THE BOX

Upon unboxing, please verify that all the following components are included:

- Weochi 4K Video Camera Camcorder
- External Microphone
- Wireless Lavalier Microphone
- 2 x Rechargeable Batteries (BL-5B, 3.7V 800mAh/890mAh)
- Remote Control
- 32GB SD Card
- USB Cable
- User Manual (this document)



Image: The Weochi 4K Camcorder displayed with all its standard accessories, including the external microphone, wireless lavalier microphone, remote control, two rechargeable batteries, and a 32GB SD card, illustrating the complete package contents.

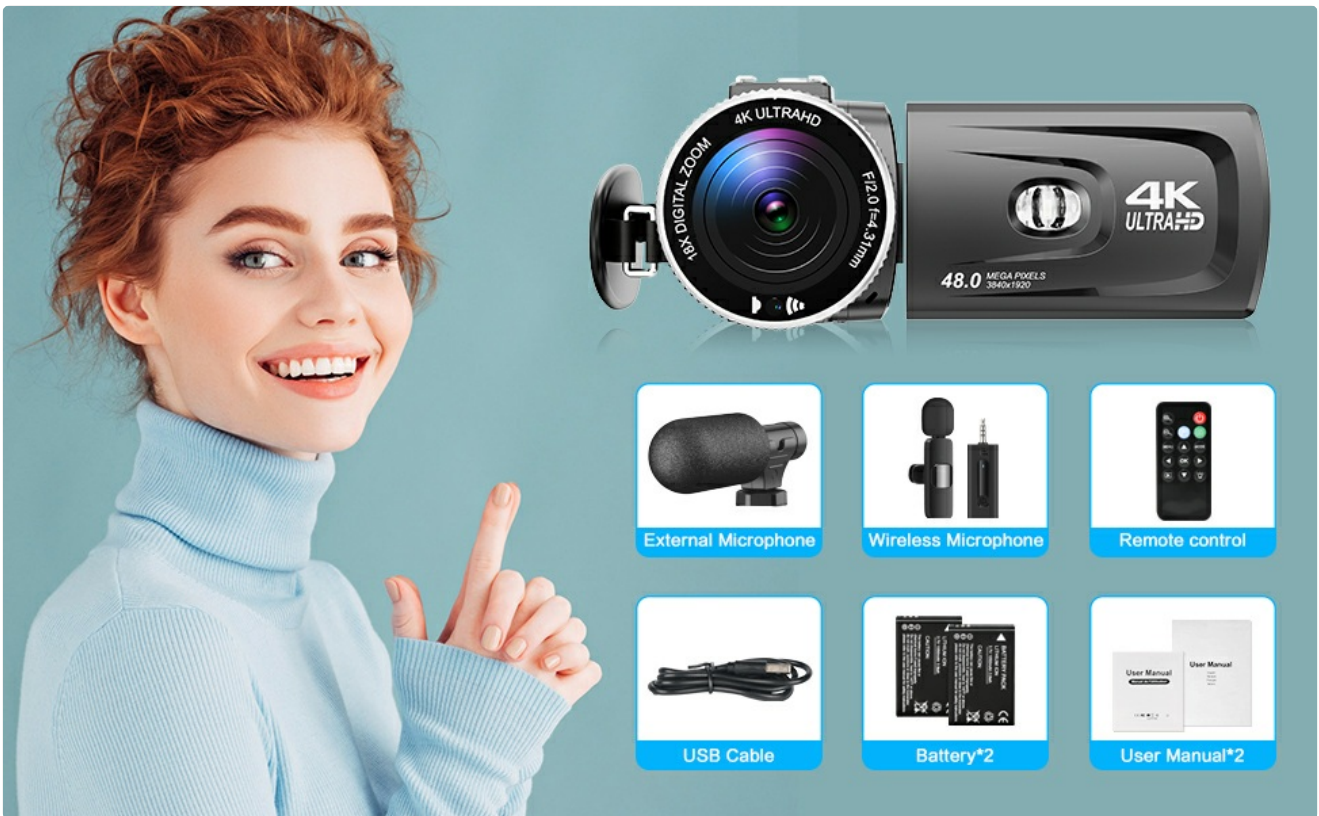


Image: A visual guide to the items included in the Weochi 4K camcorder package, showing the camera, external microphone, wireless microphone, remote control, USB cable, two batteries, and user manuals.

PRODUCT OVERVIEW

The Weochi HDV900 camcorder is equipped with a range of features for optimal performance. Familiarize yourself with the main components:

- **Lens:** High-quality lens with 18x digital zoom.
- **3.0" HD Rotating Screen:** A 270° rotatable screen for flexible viewing angles, including self-vlogging.
- **Built-in Microphone:** For standard audio capture.
- **Fill Light:** Integrated light for improved low-light recording.
- **Battery Compartment:** Located on the bottom/side for rechargeable batteries.
- **SD Card Slot:** For inserting the memory card.
- **USB Port:** For charging and data transfer (PC CAM function).
- **HDMI Port:** For connecting to a TV or monitor.
- **Microphone Input:** For connecting external microphones.

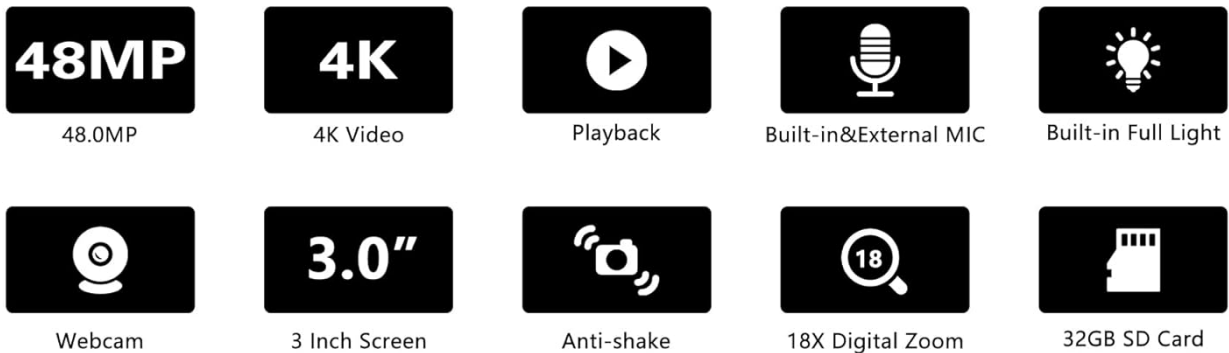


Image: An illustration of the Weochi 4K Camcorder with icons and text indicating its primary features, such as 48MP photo resolution, 4K video capability, playback function, built-in and external microphone support, integrated fill light, webcam functionality, 3.0-inch screen, anti-shake technology, 18x digital zoom, and 32GB SD card compatibility.

SETUP

1. Battery Installation and Charging

1. Open the battery compartment cover located on the bottom of the camcorder.
2. Insert the provided BL-5B 3.7V 800mAh/890mAh lithium battery, ensuring correct polarity.
3. Close the battery compartment cover securely.
4. To charge the battery, connect the camcorder to a power source using the supplied USB cable. The charging indicator will illuminate.
5. The camcorder can be used while charging.

2. SD Card Installation

1. Locate the SD card slot on the side of the camcorder.
2. Insert the 32GB SD card with the metal contacts facing down until it clicks into place.

3. To remove, gently press the card until it pops out.

3. Microphone Setup (Wireless Lavalier Mic)

1. Plug the receiver of the wireless lavalier microphone into the external microphone input port on the camcorder.
2. Clip the mini lavalier microphone to your clothing, ensuring it is positioned to capture your voice clearly.
3. Turn on both the receiver and the lavalier microphone. They should automatically pair.
4. For optimal audio quality, ensure the microphone is not obstructed and is positioned appropriately for the sound source.



Image: This image illustrates the setup of the wireless lavalier microphone with the Weochi camcorder. It shows the small microphone clipped to a person's shirt and the receiver connected to the camera, emphasizing ease of use without Bluetooth or app requirements.

OPERATING INSTRUCTIONS

1. Power On/Off

Press and hold the power button to turn the camcorder on or off. The 3.0" HD screen will illuminate.

2. Basic Recording (Video & Photo)

- **Video Recording:** In video mode, press the Record button to start recording. Press again to stop. The camcorder supports up to 4K/60fps resolution.
- **Photo Capture:** Switch to photo mode. Press the Shutter button to take a 48 Megapixel still image.
- **Zoom:** Use the zoom controls (usually a rocker switch near the lens or on the top) to adjust the 18x digital zoom.



Image: This visual demonstrates the superior clarity of 4K resolution compared to 2.7K for images up to 48.0MP. Below, it illustrates the 18x digital zoom capability, showing magnified views at 4x, 10x, and 18x zoom levels, highlighting the camera's ability to capture distant details.

3. Advanced Recording Modes & Features

- **Time-Lapse Recording:** Set the interval and duration in the menu to capture time-lapse videos.
- **Slow Motion Recording:** Enable slow motion mode for dramatic effect.
- **Pause Function:** During video recording, press the "Photo" button to pause. Press again to restart recording in the same file.
- **Motion Detection:** The camera will automatically start recording when motion is detected.

- **Continuous Shooting:** Capture a series of photos rapidly.
- **Anti-shake:** Activate this feature for more stable footage, especially when handheld.
- **Face Detection & Beauty Face:** Enhance portraits by detecting faces and applying beauty filters.
- **Self-Timer:** Set a delay before photo capture.
- **Recording While Charging:** The camcorder supports continuous operation while connected to a power source.



Pause Function

press "photo" to pause



press "photo" to restart



270°



Image: This image illustrates three key recording features: Time-Lapse Recording, showing a flower blooming over time; Slow Motion Recording, depicting a snowboarder in mid-air; and the Pause Function, explaining how to pause and restart video recording using the "Photo" button.

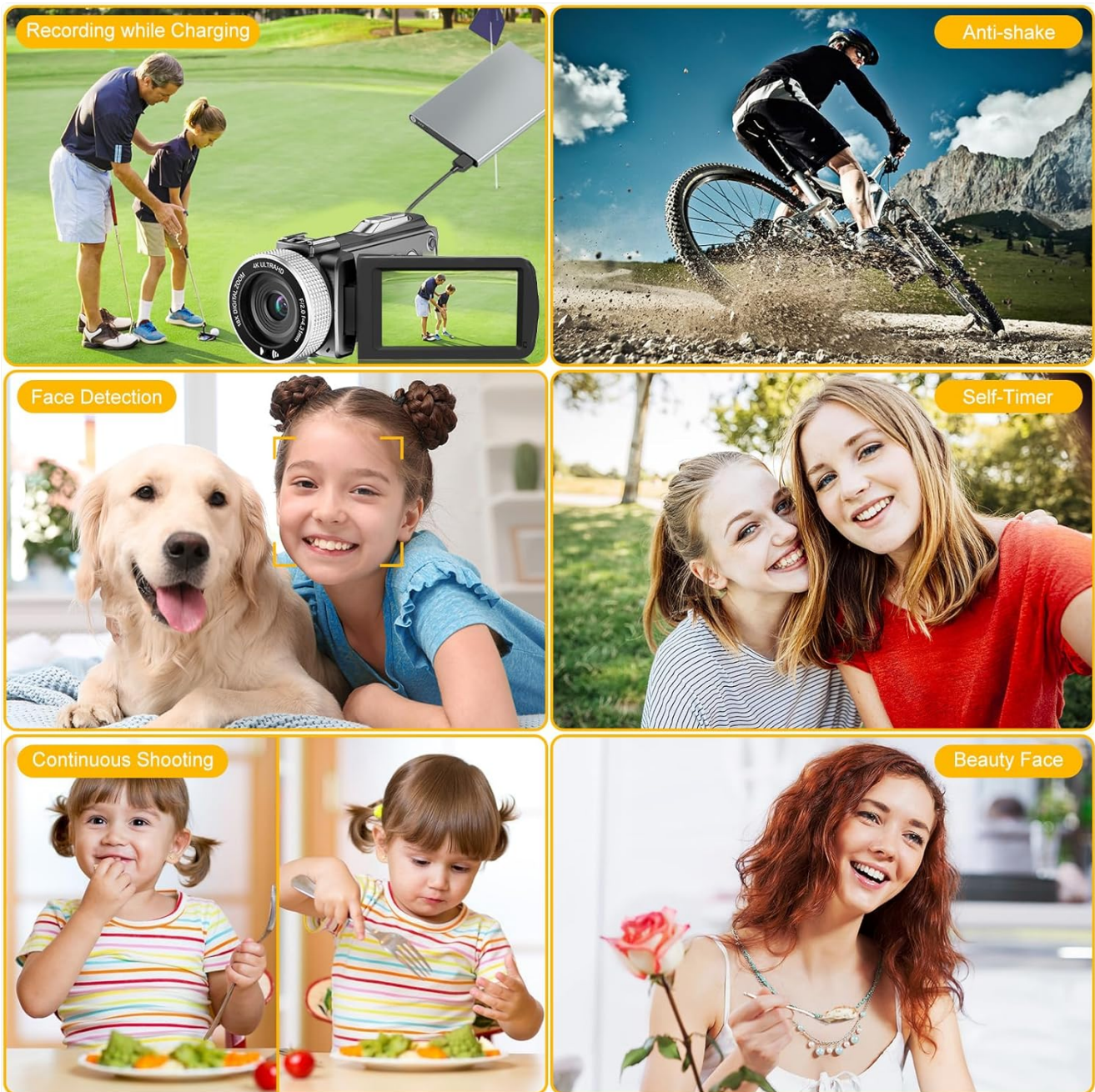


Image: A collage showcasing several advanced features of the Weochi camcorder, including the ability to record while charging, anti-shake technology for stable footage, face detection, self-timer, continuous shooting mode, and a beauty face function for enhanced portraits.

4. Webcam Functionality

To use the camcorder as a webcam for live streaming, video calls, or online meetings:

1. Connect the camcorder to your computer using the provided USB cable.
2. On the camcorder screen, select "PC CAM" from the options.
3. Your computer should recognize the camcorder as a webcam. Select it in your video conferencing or streaming software.

5. TV Output (HDMI)

Connect the camcorder to a TV or monitor using an HDMI cable (not included) to view your recordings on a larger screen.

6. Remote Control Operation

The included infrared remote control allows you to operate the camcorder from a distance, making it convenient for self-recording or group shots. Refer to the remote control's button layout for specific functions like recording, zooming, and menu navigation.

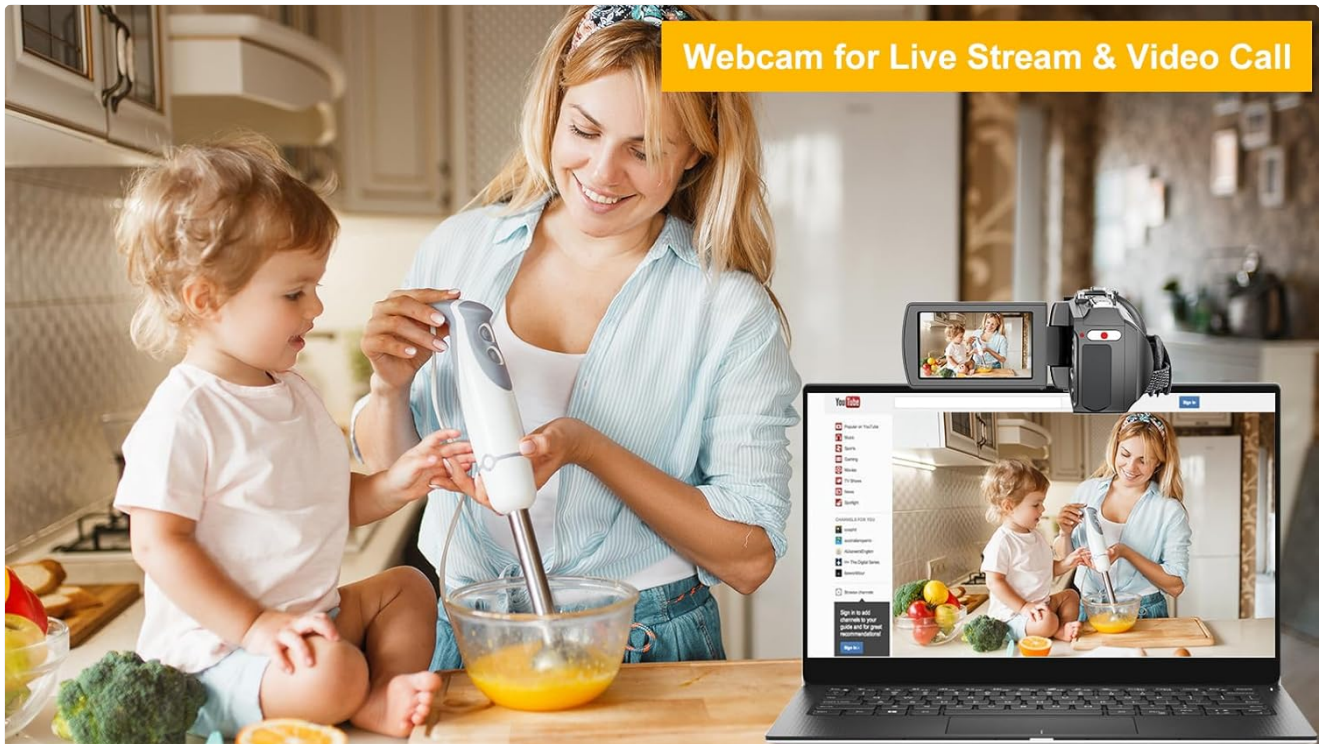


Image: This image illustrates the versatility of the Weochi camcorder, showing its use as a webcam for live streaming and video calls, its HDMI output capability for viewing content on a television, and the convenience of recording while the device is charging.

MAINTENANCE

- **Cleaning:** Use a soft, dry cloth to clean the camera body. For the lens, use a specialized lens cleaning cloth and solution. Avoid abrasive materials.
- **Storage:** Store the camcorder in a cool, dry place away from direct sunlight and extreme temperatures. Remove the battery if storing for extended periods.
- **Battery Care:** Fully charge batteries before first use. Do not expose batteries to fire or excessive heat. Dispose of batteries responsibly.
- **SD Card Care:** Format the SD card periodically within the camera to maintain optimal performance. Back up important data regularly.

TROUBLESHOOTING

If you encounter issues with your Weochi camcorder, please refer to the following common problems and solutions:

- **Battery not working or will not hold charge:**

If your battery is not functioning correctly or fails to hold a charge, please contact the seller for assistance or to obtain a new battery.

- **Did not receive the 32GB Micro SD Card, or it shows a "card error":**

If the 32GB Micro SD Card was missing from your package or if the camera displays a "card error" message, please reach out to the seller to receive a new card.

- **Lost the user manual or difficulty understanding instructions:**

If you have lost your user manual or are having trouble understanding the instructions, you can contact the Amazon seller to request a PDF copy of the manual or for personalized guidance until you are proficient with the camera's operation.

SPECIFICATIONS

Feature	Detail
Brand Name	Weochi
Model Number	HDV900
Item Weight	1.08 pounds
Package Dimensions	6.42 x 4.61 x 3.31 inches
Batteries	1 Lithium Ion battery required (included)
Color	Black
Special Features	4K/60FPS Video Resolution, Wireless Lavalier Mic, Remote Control, Advanced Recording Modes, Webcam Functionality
Photo Sensor Technology	CMOS
Video Capture Resolution	4K (3840*2160)
Maximum Focal Length	20 Millimeters
Flash Memory Type	SD
Video Capture Format	MP4
Supported Audio Format	MP4
Screen Size	3 Inches (270° rotating HD screen)

Feature	Detail
Connectivity Technology	HDMI, USB

WARRANTY AND SUPPORT

Weochi is committed to providing high-quality products and customer satisfaction. If you have any questions, concerns, or require assistance with your camcorder, please do not hesitate to contact the Amazon seller directly. They are available to provide personalized guidance and support to ensure you are proficient in using your camera. For specific issues like battery or SD card replacements, please contact the seller as indicated in the Troubleshooting section.