



[Manuals.plus](#) /

› [Weaboopre](#) /

› Weaboopre Keyless Entry Door Lock Handle Set (Model WPDB002B1) - Instruction Manual

Weaboopre WPDB002B1

Weaboopre Keyless Entry Door Lock Handle Set (Model WPDB002B1)

Instruction Manual

1. INTRODUCTION

This manual provides detailed instructions for the installation, operation, and maintenance of your Weaboopre Keyless Entry Door Lock Handle Set, Model WPDB002B1. Please read this manual thoroughly before installation and use to ensure proper function and security.



Image 1.1: The Weaboopre Keyless Entry Door Lock Handle Set, featuring a keypad deadbolt and a lever handle, installed on a white door.

2. PRODUCT OVERVIEW AND FEATURES

The Weaboopre Keyless Entry Door Lock Handle Set offers advanced security and convenience for your front door. Key features include:

- **Keyless Entry:** Access your door using custom user codes.
- **Multiple User Codes:** Supports up to 20 programmable user codes and one-time guest codes.
- **Auto-Lock Function:** Automatically secures the door latch after a set time (adjustable).
- **Vacation Mode:** Enhances security when you are away for extended periods.
- **Intrusion Prevention:** Triggers an alarm and temporarily locks the keypad after multiple failed attempts.
- **Durable Construction:** Made from aluminum with a pry-proof lock cylinder.
- **Weather Resistant:** IP54 waterproof rating, operational in temperatures from -22°F to 158°F.
- **Low Battery Alert:** Audible alert when battery power is low.
- **Backlit Keypad:** Illuminated keypad for visibility in low light conditions.

Function & Security



Image 2.1: Overview of the lock's functions and security features, including 20 user codes, auto-lock, IP54 waterproof rating, one-time PIN code, one-touch locking, low battery indicator, and up to 1 year battery life.

3. SPECIFICATIONS

Feature	Specification
Brand	Weaboopre
Model Name	Deadbolts (WPDB002B1)
Material	Aluminum
Lock Type	Combination Lock, Mortise Lock
Special Feature	Auto-Lock
Item Dimensions (L x W x H)	5 x 2.7 x 1.3 inches
Item Weight	4.73 pounds

Finish Type	Powder Coated
Control Method	Touch (Keypad)
Power Source	4 AA Batteries (not included)
Operating Temperature	-22°F to 158°F
Waterproof Rating	IP54

4. SETUP AND INSTALLATION

4.1 Pre-Installation Checks

Before beginning installation, ensure your door meets the following specifications:

- Hole diameter: 2-1/8 inches (54mm)
- Minimum distance from door edge to center of deadbolt hole: 4 inches (101.6mm)
- Backset: 2-3/8 inches or 2-3/4 inches (60mm or 70mm)
- Latch hole diameter: 3/8 inch (10mm)

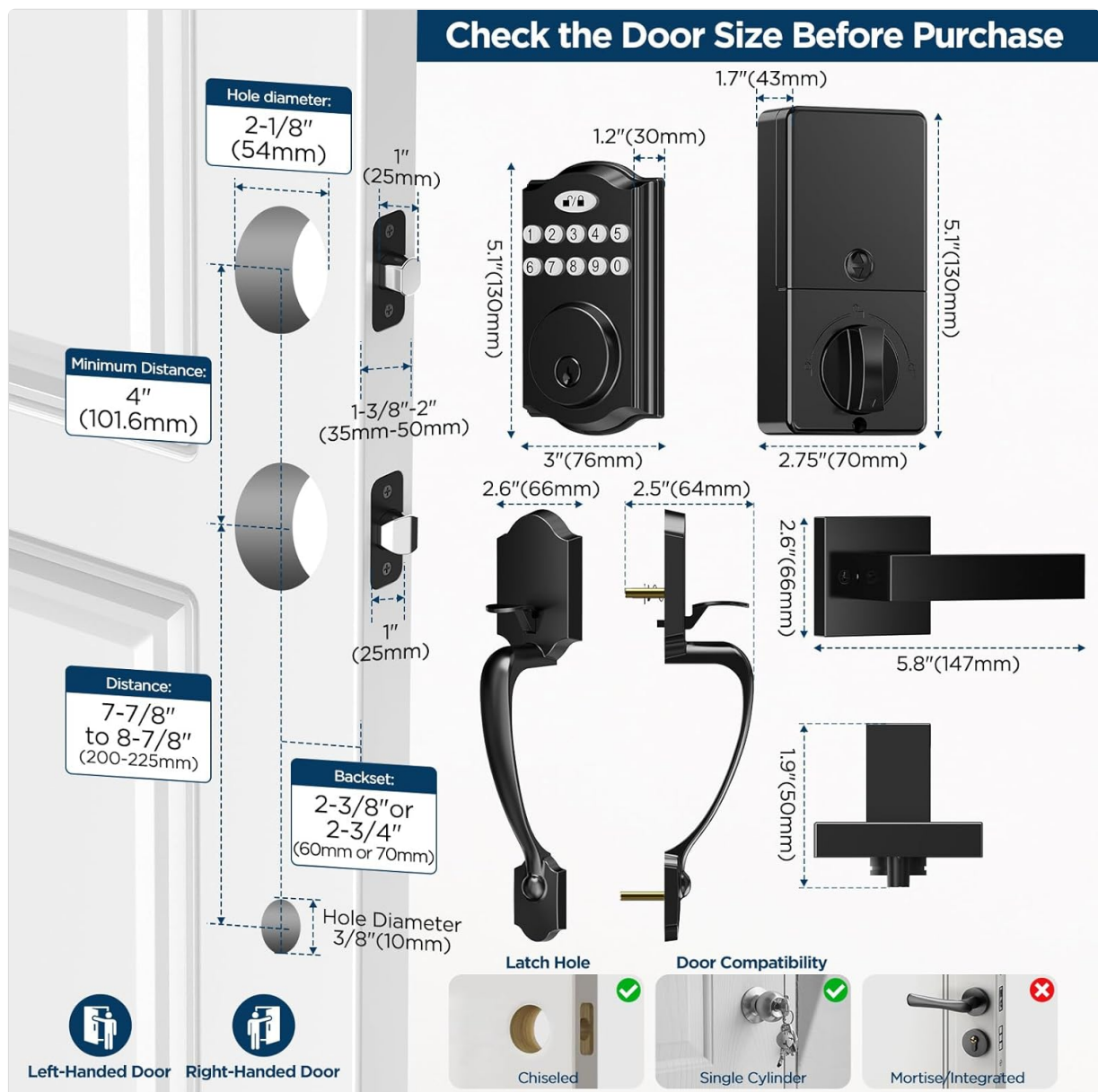


Image 4.1: Detailed diagram illustrating required door dimensions and compatibility for installation, including hole diameters, backset, and minimum distances.

4.2 Installation Steps

The lock is designed for easy installation using existing 2-1/8 inch holes, typically requiring no additional drilling. Follow the detailed instructions provided in the physical manual included with your product for step-by-step guidance. Ensure correct orientation for left-handed or right-handed doors.

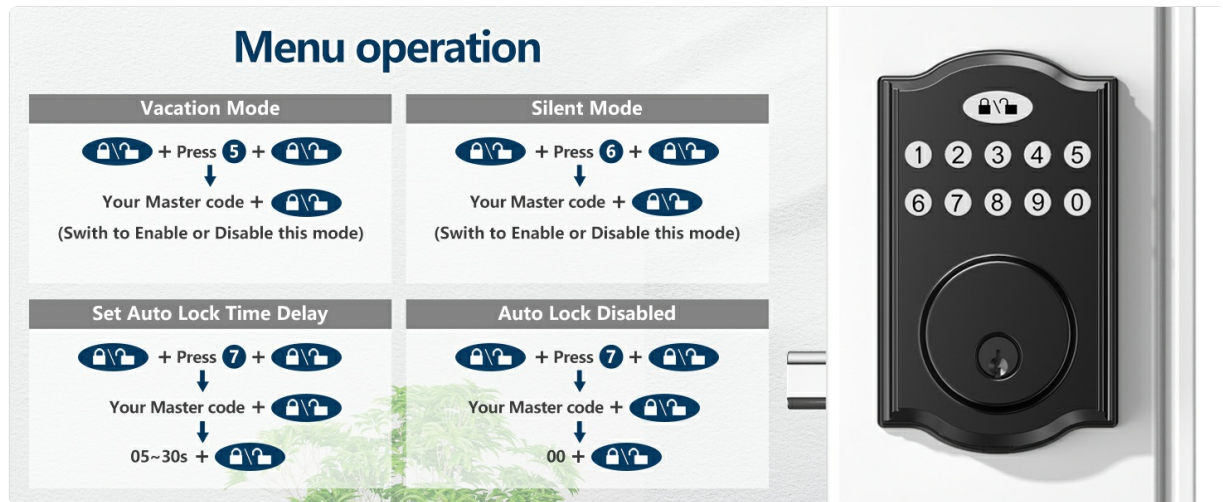


Image 4.2: The lock automatically identifies left or right door orientation for simplified installation.

4.3 Battery Installation

The lock requires 4 AA alkaline batteries (not included). Install them into the interior assembly according to the polarity markings. Ensure the battery cover is securely fastened after installation.

5. OPERATING INSTRUCTIONS

5.1 Accessing the Door

You can access your door using either a custom code on the keypad or a physical key.

- **Code Entry:** Enter your valid user code on the keypad, then press the lock/unlock button.
- **Key Entry:** Insert the physical key into the keyhole and turn to unlock.

2 Ways to Access



Image 5.1: The lock supports two access methods: entering a code on the keypad or using a traditional physical key.

5.2 Programming Codes

The lock allows for easy management of master, user, and one-time codes.

Menu operation

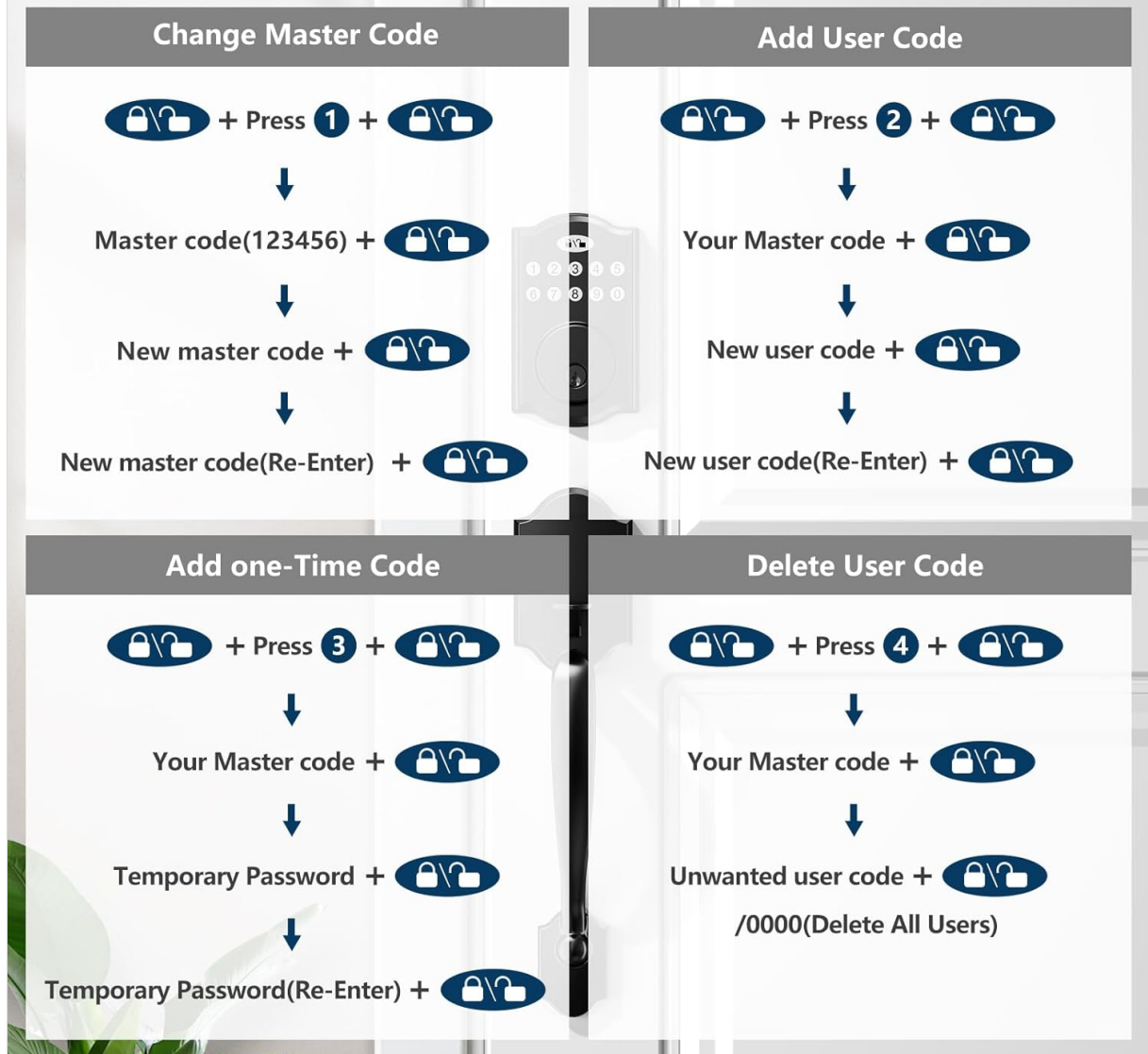


Image 5.2: Instructions for programming codes, including changing the master code, adding user codes, adding one-time codes, and deleting user codes.

- **Change Master Code:** Press the lock/unlock button + 1 + lock/unlock button. Enter default master code (123456) + lock/unlock button. Enter new master code + lock/unlock button. Re-enter new master code + lock/unlock button.
- **Add User Code:** Press the lock/unlock button + 2 + lock/unlock button. Enter your master code + lock/unlock button. Enter new user code + lock/unlock button. Re-enter new user code + lock/unlock button.
- **Add One-Time Code:** Press the lock/unlock button + 3 + lock/unlock button. Enter your master code + lock/unlock button. Enter temporary password + lock/unlock button. Re-enter temporary password + lock/unlock button. (This code is automatically deleted after one use).
- **Delete User Code:** Press the lock/unlock button + 4 + lock/unlock button. Enter your master code + lock/unlock button. Enter unwanted user code + lock/unlock button. To delete all users, enter 0000 + lock/unlock button.

5.3 Auto-Lock and One-Touch Locking

The lock features automatic locking for enhanced security and convenience.

- **Auto-Lock:** The door will automatically lock after a set delay once closed.

- **One-Touch Locking:** Simply press the lock/unlock button to lock the door instantly.



Image 5.3: The auto-lock feature automatically secures the door, and one-touch locking provides immediate security.

5.4 Advanced Modes

Manage specific lock behaviors with these advanced settings:

Menu operation

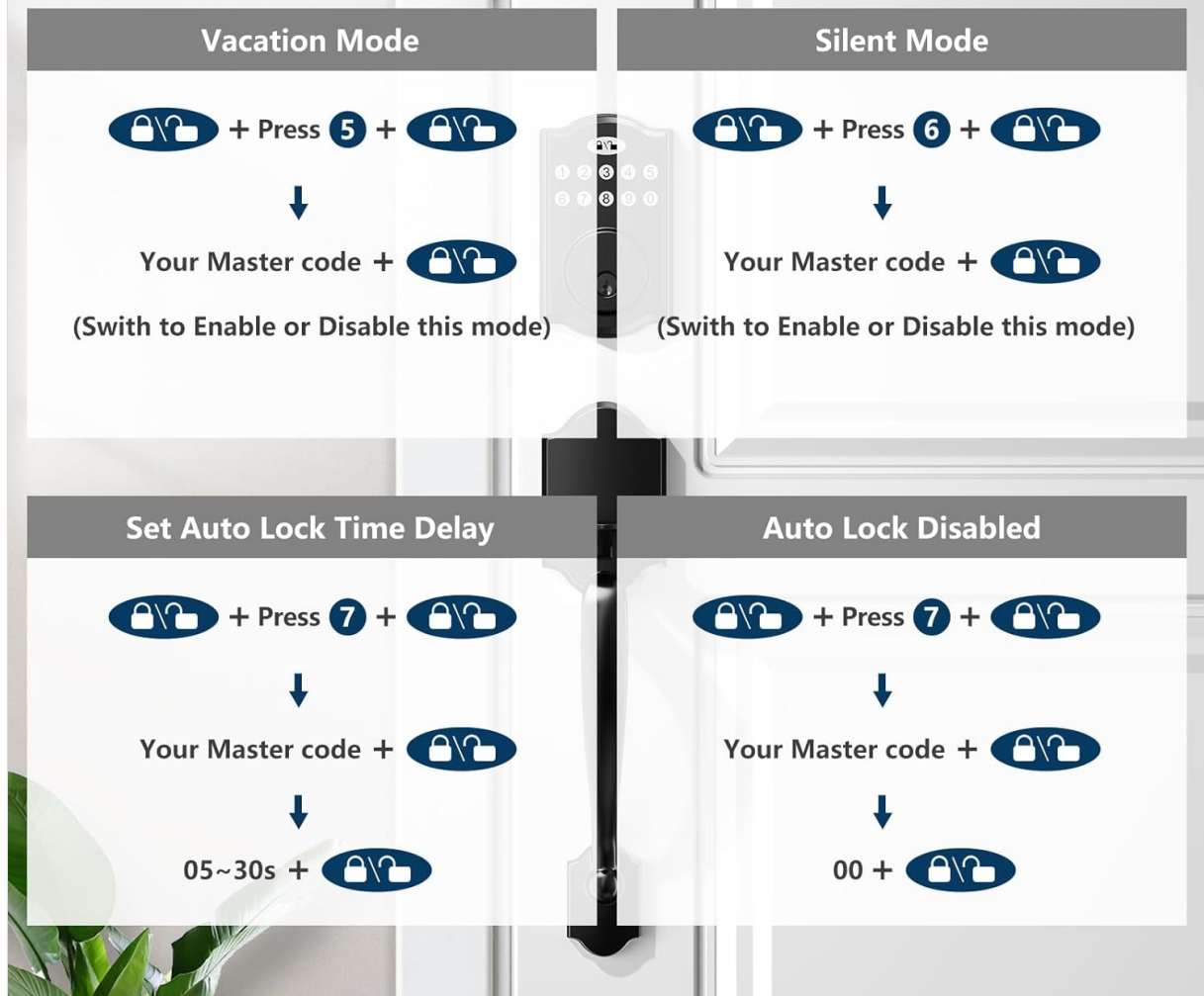


Image 5.4: Instructions for activating Vacation Mode, Silent Mode, setting the Auto Lock Time Delay, and disabling Auto Lock.

- **Vacation Mode:** Press the lock/unlock button + 5 + lock/unlock button. Enter your master code + lock/unlock button. Switch to enable or disable this mode. When enabled, only the administrator password can open the door.
- **Silent Mode:** Press the lock/unlock button + 6 + lock/unlock button. Enter your master code + lock/unlock button. Switch to enable or disable this mode. This silences keypad tones.
- **Set Auto Lock Time Delay:** Press the lock/unlock button + 7 + lock/unlock button. Enter your master code + lock/unlock button. Enter a delay time (05-30 seconds) + lock/unlock button.
- **Auto Lock Disabled:** Press the lock/unlock button + 7 + lock/unlock button. Enter your master code + lock/unlock button. Enter 00 + lock/unlock button.

5.5 Anti-Peep Password

To prevent others from guessing your code, you can enter random digits before or after your actual code. The lock will still recognize the correct sequence within the longer entry.

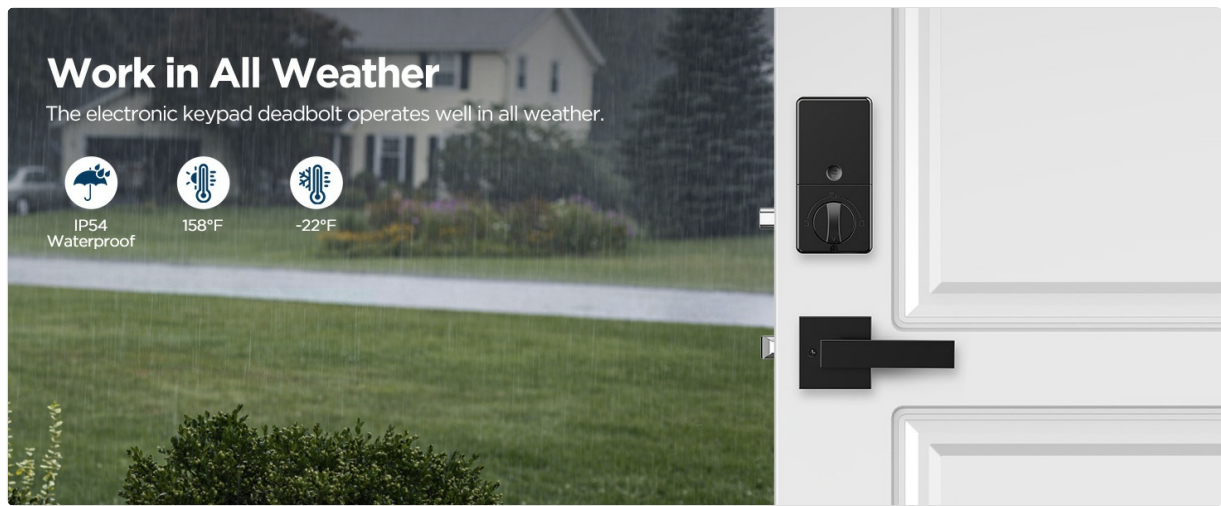


Image 5.5: The anti-peep feature allows you to enter random digits before or after your actual code to obscure it from onlookers.

6. MAINTENANCE

6.1 Battery Replacement

When the battery level is low, the lock will emit an audible alarm after each lock or unlock operation. Replace all four AA batteries promptly to ensure continuous operation.

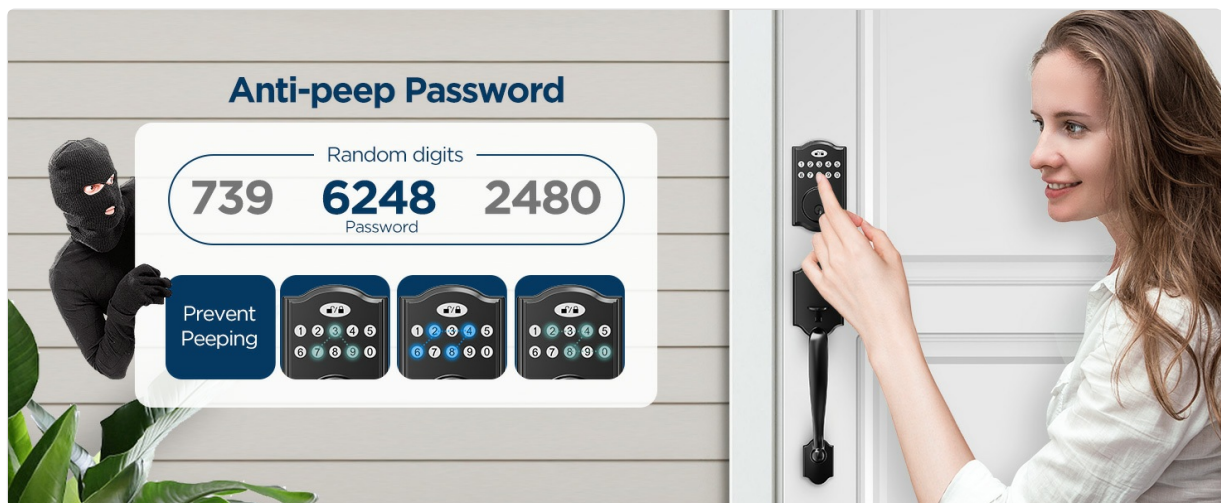


Image 6.1: The lock provides a low battery alert and features a backlit keypad for convenience. Expected battery life is up to one year with alkaline batteries.

6.2 Cleaning

Clean the lock's exterior with a soft, damp cloth. Avoid using abrasive cleaners or solvents, as these can damage the finish and electronic components.

7. TROUBLESHOOTING

- **Keypad Not Responding:** Check battery levels. If batteries are low, replace them. Ensure the keypad is clean and free from debris.
- **Lock Not Engaging/Disengaging:** Verify that the door is properly aligned and the deadbolt can extend fully into the strike plate. Check for any obstructions.
- **Alarm Sounds After Failed Attempts:** This is an intrusion prevention feature. The keypad will lock

for 3 minutes after 5 incorrect code entries. Wait for the lockout period to expire before trying again.

- **Codes Not Working:** Ensure you are entering the correct code and pressing the lock/unlock button afterward. If a user code is not working, try reprogramming it. If the master code is forgotten, refer to the physical manual for reset procedures.
- **Auto-Lock Not Functioning:** Check if Auto Lock is enabled and the time delay is set correctly (refer to Section 5.4).

8. WARRANTY AND SUPPORT

Your Weaboopre Keyless Entry Door Lock Handle Set comes with a **1-year warranty** from the date of purchase, covering manufacturing defects and malfunctions under normal use.

Weaboopre also provides **lifetime technical support** for this product. If you encounter any issues or have questions not covered in this manual, please contact Weaboopre customer service for assistance.

For support, please refer to the contact information provided with your product packaging or visit the official Weaboopre website.