



Manuals.plus /

› WANBO /

› WANBO T-Type Ceiling Mount for Wanbo X5 Pro Projector User Manual

WANBO WBUS-T-X5 Pro

WANBO T-Type Ceiling Mount for Wanbo X5 Pro Projector User Manual

Model: WBUS-T-X5 Pro

1. PRODUCT OVERVIEW

The WANBO T-Type Ceiling Mount is a robust and adjustable mounting solution designed specifically for the Wanbo X5 Pro home projector. Constructed from high-quality aluminum alloy, this mount provides a secure and stable platform for ceiling installation. Its adjustable design allows for precise positioning of your projector, ensuring optimal viewing angles. The minimalist aesthetic integrates seamlessly into various room decors.

2. PACKAGE CONTENTS

Verify that all components are present in the package before proceeding with installation.

- Mounting Arm
- Mounting Hardware (screws, anchors)



Image 2.1: Components of the WANBO T-Type Ceiling Mount, including the main arm and the ceiling base.

3. SAFETY INFORMATION

- Read all instructions carefully before installation.
- Ensure the mounting surface (ceiling) can safely support the combined weight of the mount and the projector (maximum 10 pounds).
- Use appropriate tools and safety gear during installation.
- If unsure about installation, consult a qualified professional.
- Do not overtighten screws, as this may damage the mount or the projector.
- Keep children and pets away from the installation area.

4. SETUP AND INSTALLATION

Follow these steps to securely install your WANBO T-Type Ceiling Mount.

4.1 Identify Mounting Location

- Choose a suitable location on the ceiling that provides a clear projection path and is structurally sound.

- Ensure there are no electrical wires or plumbing in the drilling path.

4.2 Assemble the Mount

1. Attach the mounting arm to the circular ceiling base by screwing them together. Ensure it is hand-tightened securely.

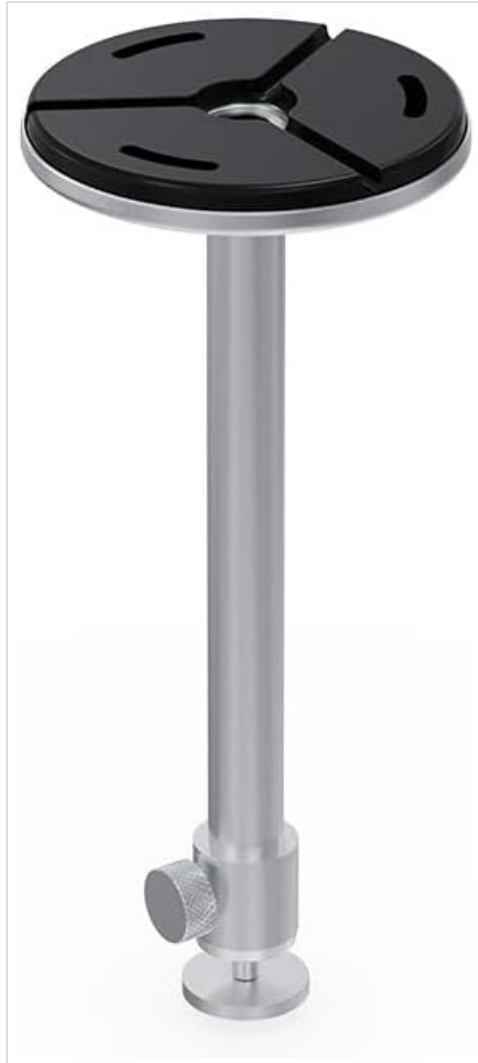


Image 4.1: The WANBO T-Type Ceiling Mount fully assembled before ceiling installation.

4.3 Mount to Ceiling

1. Hold the assembled mount against the chosen ceiling location and mark the drilling points through the holes in the circular base.
2. Drill pilot holes into the ceiling at the marked points. Use appropriate drill bits for your ceiling material.
3. Insert the provided wall anchors (if necessary for your ceiling type) into the pilot holes.
4. Align the mount's base with the drilled holes and secure it to the ceiling using the provided screws. Ensure the mount is firmly attached and does not wobble.

4.4 Attach Projector

1. Locate the mounting screw hole on the bottom of your Wanbo X5 Pro projector.
2. Align the projector's mounting hole with the threaded screw at the end of the mount's arm.
3. Carefully screw the projector onto the mount until it is secure. Do not overtighten.

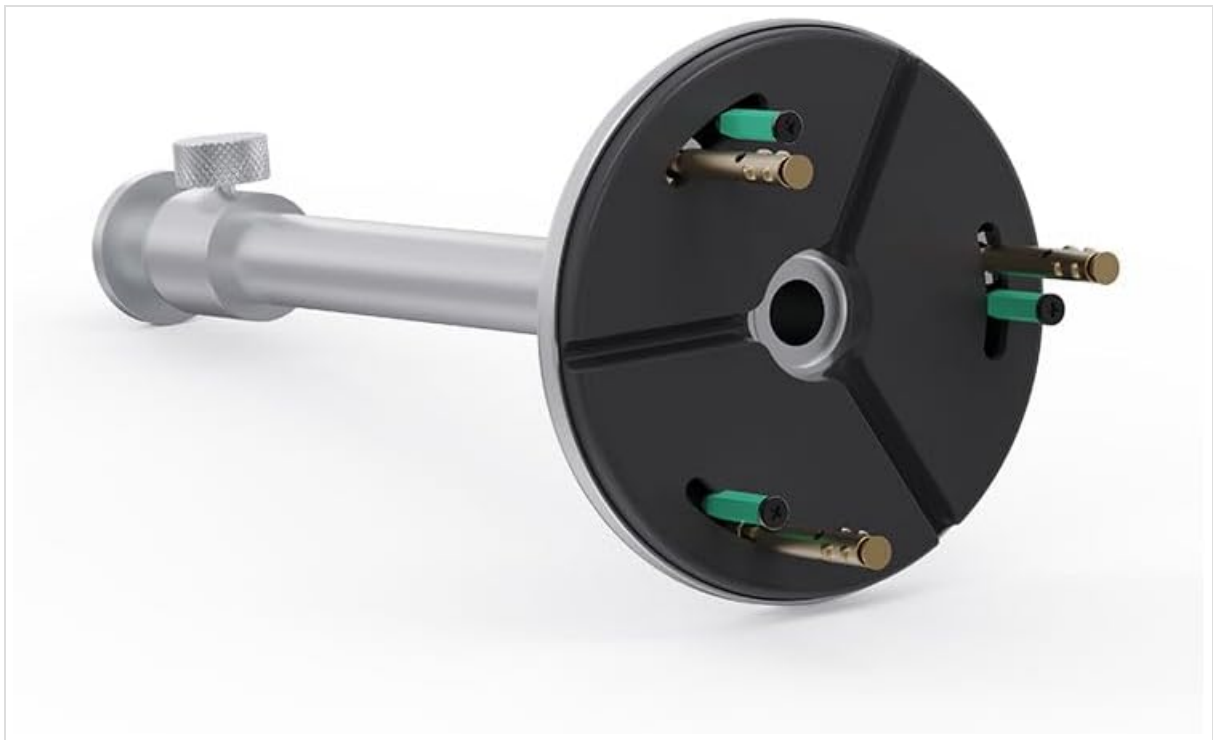


Image 4.2: Detail of the projector attachment mechanism on the mount.

5. OPERATING INSTRUCTIONS

The WANBO T-Type Ceiling Mount offers adjustable features for optimal projector positioning.

5.1 Adjusting Height

The mount features a telescoping design. To adjust the height, loosen the knob on the side of the mounting arm, extend or retract the arm to the desired length (up to 13.0 inches), and then tighten the knob firmly to secure the position.

5.2 Rotating the Projector

The mount allows for rotation. Gently rotate the projector to achieve the desired horizontal angle. Ensure the projector is stable after adjustment.

6. MAINTENANCE

- **Cleaning:** Wipe the mount with a soft, dry cloth. Do not use abrasive cleaners or solvents.
- **Periodic Checks:** Periodically check all screws and connections to ensure they remain tight and secure.
- **Weight Limit:** Do not exceed the maximum weight capacity of 10 pounds.

7. TROUBLESHOOTING

- **Mount feels unstable:** Ensure all mounting screws are securely tightened to the ceiling and the projector is firmly attached to the mount. Verify the ceiling structure is adequate.
- **Difficulty adjusting height/rotation:** Loosen the adjustment knob sufficiently before attempting to move the arm or rotate the projector. Do not force adjustments.
- **Projector not level:** Re-adjust the rotation and ensure the ceiling mount itself is installed level.

8. SPECIFICATIONS

Brand	WANBO
Model Name	T-Type Ceiling Mount
Model Number	WBUS-T-X5 Pro (WBCA01)
Compatible Devices	Wanbo X5 Pro Projector
Mounting Type	Ceiling Mount
Material	Aluminum Alloy
Color	Silver
Maximum Weight Capacity	10 Pounds (4.5 kg)
Item Weight	0.7 Pounds (0.32 kg)
Arm Length	13.0 inches (33 cm)
Additional Features	Adjustable, Rotatable

9. WARRANTY AND SUPPORT

9.1 Warranty Information

This WANBO T-Type Ceiling Mount comes with a **1 Year Manufacturer Warranty** from the date of purchase. This warranty covers defects in materials and workmanship under normal use. It does not cover damage caused by improper installation, misuse, accidents, or unauthorized modifications.

9.2 Customer Support

For technical assistance, warranty claims, or any questions regarding your WANBO T-Type Ceiling Mount, please contact WANBO customer support through the official WANBO website or your retailer's support channels. Please have your model number (WBUS-T-X5 Pro) and proof of purchase ready when contacting support.