

Milfra [IN] Milfra Wireless Light Switch

Milfra Self-Powered Wireless Light Switch and Receiver Kit User Manual

Brand: Milfra

INTRODUCTION

This user manual provides comprehensive instructions for the installation, operation, and maintenance of your Milfra Self-Powered Wireless Light Switch and Receiver Kit. This innovative system allows for convenient control of your lighting fixtures without the need for traditional wiring or batteries, utilizing kinetic energy for power generation. Please read this manual thoroughly before installation and use to ensure proper function and safety.

KEY FEATURES

- **Self-Powered Operation:** The wireless switch generates its own power through kinetic energy when pressed, eliminating the need for batteries.
- **Wireless Installation:** No in-wall wiring is required for the switch, offering flexible placement options. The receiver wires directly between the power source and the lighting fixture.
- **Extended Range:** Features a strong RF signal capable of operating through walls and doors, with a range of up to 330 feet in open areas and 100 feet indoors.
- **Multi-Control Capability:** One switch can be paired with multiple receivers to control several light fixtures simultaneously. One receiver can be paired with up to 15 switches, enabling versatile multi-way control systems.
- **Waterproof Design:** The wireless switch is suitable for use in wet environments such as bathrooms and courtyards, ensuring safety and durability.
- **Wide Application:** Ideal for controlling various indoor lighting fixtures, ceiling lights, pendant lamps, and other hard-to-reach electrical appliances.



Image: Key features of the Milfra Wireless Light Switch, highlighting wireless connections, self-powered operation, and waterproof design.

WHAT'S IN THE BOX

Your Milfra Self-Powered Wireless Light Switch and Receiver Kit includes the following components:

- 1 x Self-Powered Wireless Light Switch
- 1 x Wireless Receiver Module
- User Manual (this document)
- Mounting Accessories (screws, adhesive tape)



Image: The Milfra Self-Powered Wireless Light Switch and its corresponding receiver module.

PRODUCT SPECIFICATIONS

Specification	Value
Product Dimensions	2.75 x 1.73 x 4.72 inches; 5.29 ounces
Item Model Number	[IN] Milfra Wireless Light Switch
Operation Mode	ON-OFF
Current Rating	10 Amps
Operating Voltage	110 Volts (AC)
Contact Type	Normally Closed

Connector Type	Plug In
Circuit Type	1-way
Actuator Type	Push Button

INSTALLATION GUIDE

The Milfra Wireless Light Switch system consists of two main parts: the wireless switch (transmitter) and the receiver module. The receiver module needs to be wired to your lighting fixture, while the wireless switch can be placed anywhere.

1. Receiver Wiring Schematic

Before beginning, ensure the power supply to the circuit you are working on is turned OFF at the circuit breaker to prevent electrical shock.

1. Identify the Live (L) and Neutral (N) wires from your power supply (AC 110-230V).
2. Connect the Live (L) wire from the power supply to the 'L INPUT' terminal on the receiver.
3. Connect the Neutral (N) wire from the power supply to the 'N INPUT' terminal on the receiver.
4. Connect the Live (L) wire leading to your light fixture to the 'L OUTPUT' terminal on the receiver.
5. Connect the Neutral (N) wire leading to your light fixture to the 'N OUTPUT' terminal on the receiver.

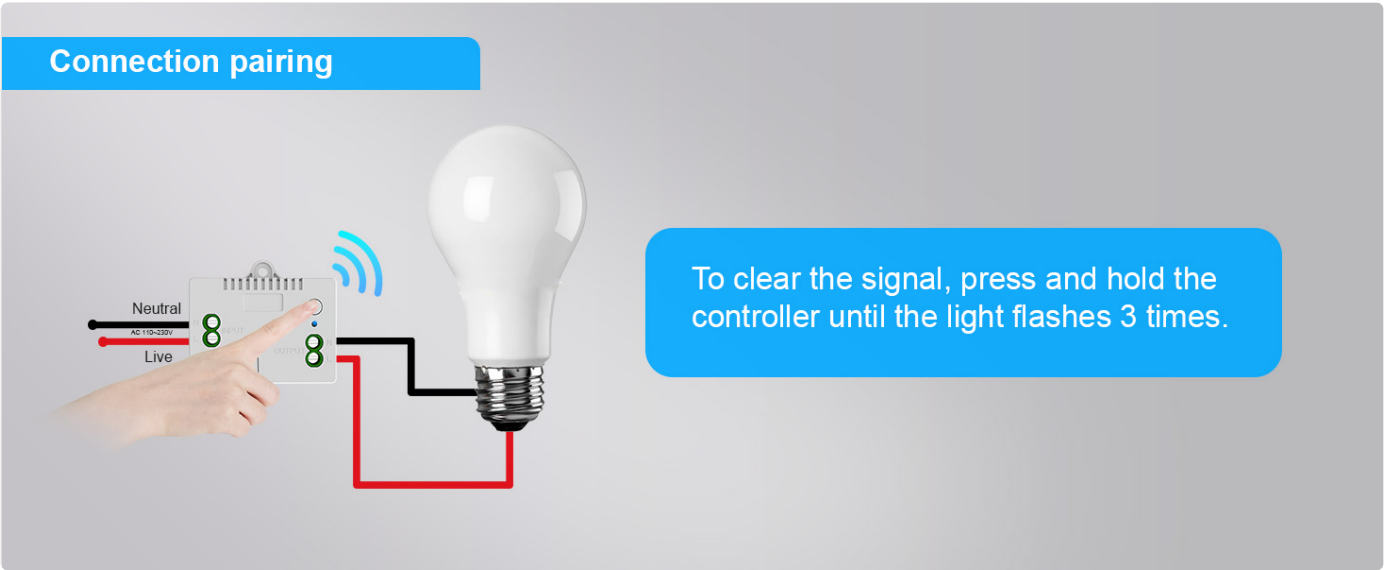


Image: Diagram showing how to wire the receiver module to the AC power supply and the light fixture. Ensure correct connection of Live (L) and Neutral (N) wires for both input and output.

Your browser does not support the video tag.

Video: An official product video demonstrating the wiring and functionality of the Wireless Light Switch and Receiver Kit.

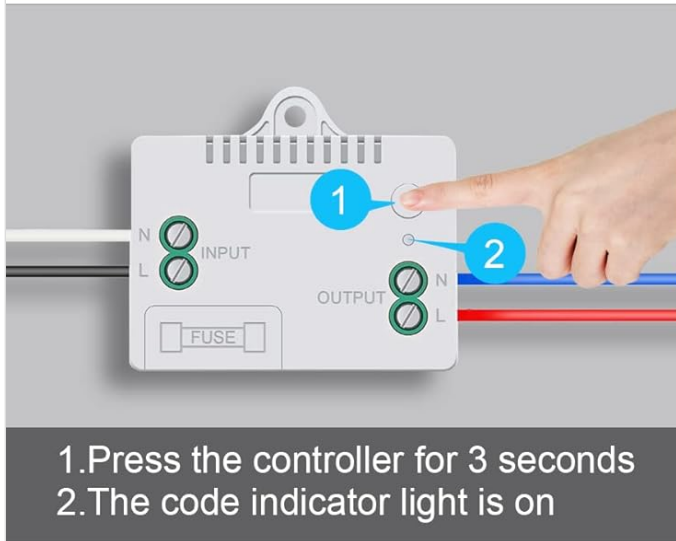
2. Pairing the Wireless Switch with the Receiver

Once the receiver is safely wired and powered on, you can pair the wireless switch:

1. Press and hold the pairing button on the receiver module for 3 seconds. The code indicator light on the receiver will turn on.
2. While the receiver's indicator light is on, press the wireless switch button once.
3. The pairing indicator light on the receiver will flash once, indicating successful pairing.

How to pair signal?

When the controller is safely connected to the power supply



How to clear signal?

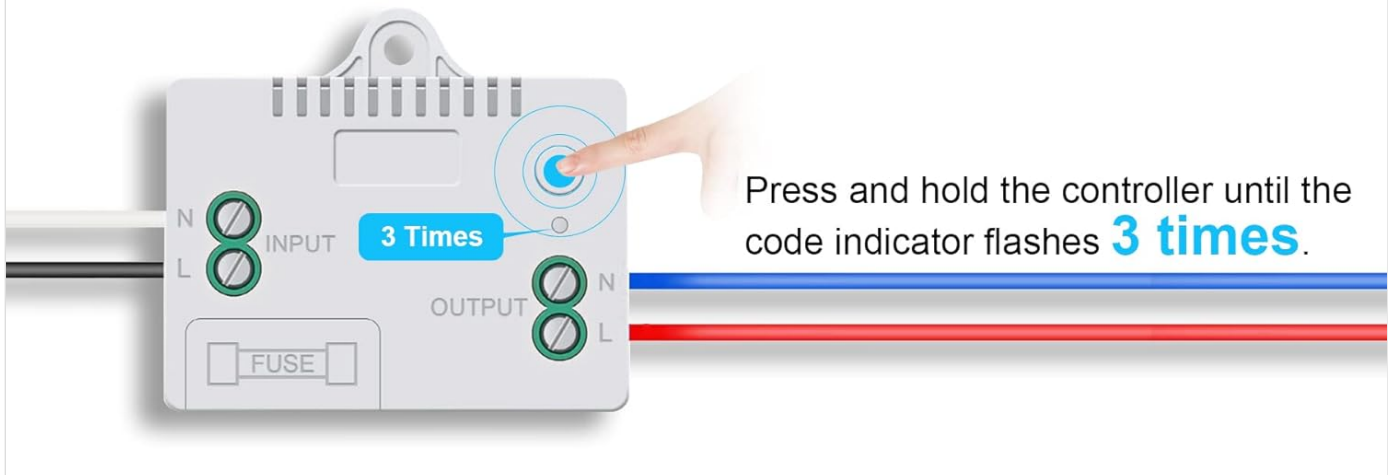


Image: Visual steps for pairing the wireless switch with the receiver. Press and hold the receiver button, then press the switch button once.

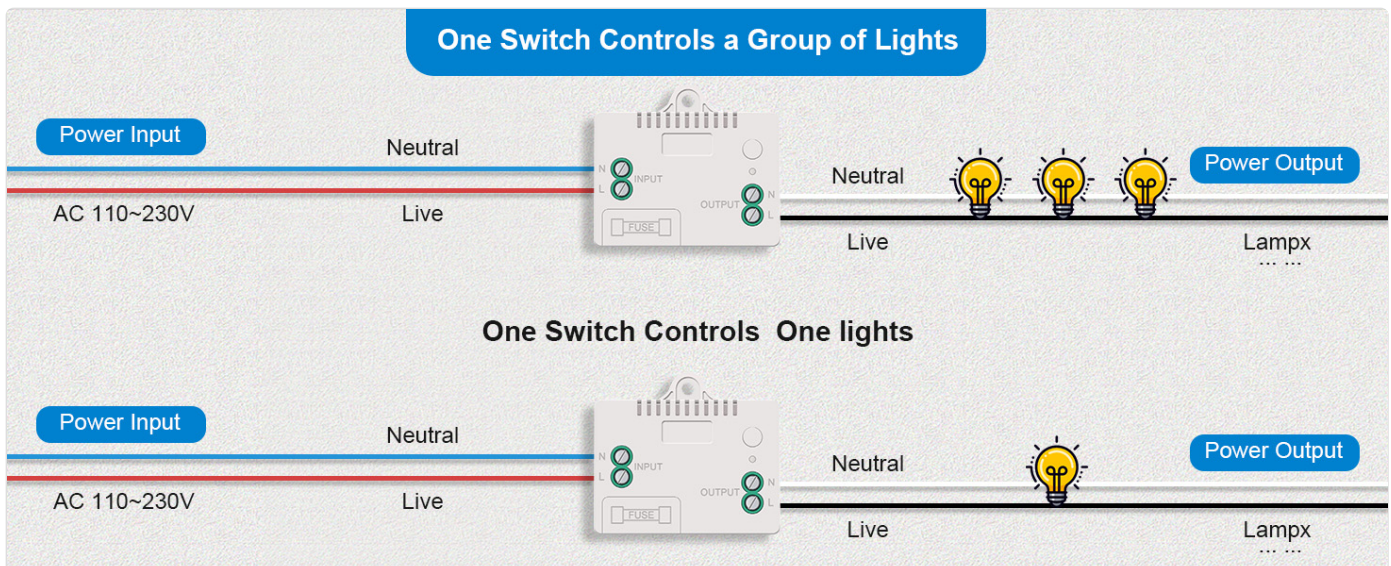


Image: Detailed illustration of the connection pairing process, showing the receiver and switch interaction.

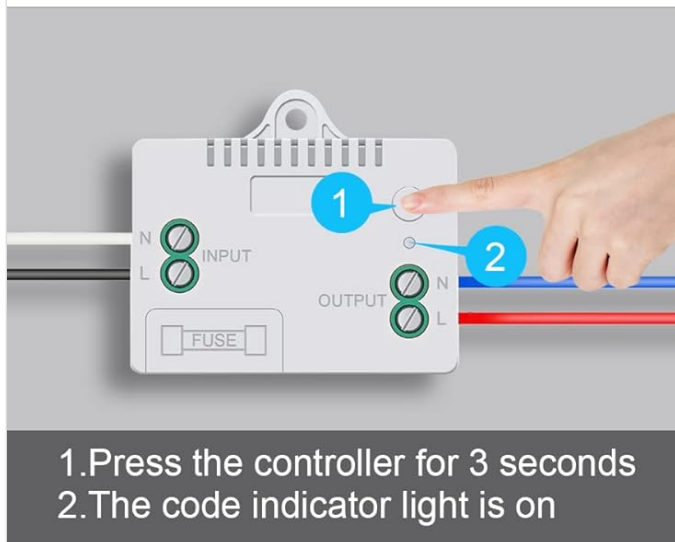
3. Clearing the Signal (Unpairing)

To clear the pairing signal from the receiver:

- Press and hold the pairing button on the receiver module until the indicator light flashes 3 times. This will clear all previously paired switches from that receiver.

How to pair signal?

When the controller is safely connected to the power supply



How to clear signal?

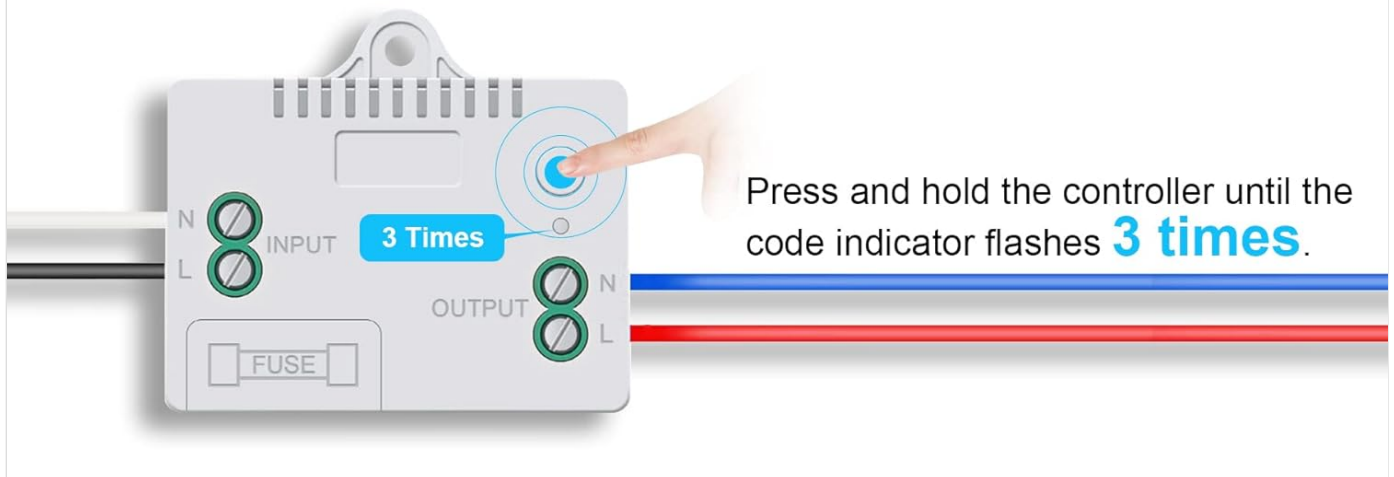


Image: Instructions for clearing the signal from the receiver. Press and hold the button until the light flashes three times.

OPERATION

Basic On/Off Control

Once paired, simply press the wireless light switch button to toggle the connected light fixture ON or OFF. The kinetic energy generated by the press powers the signal transmission.

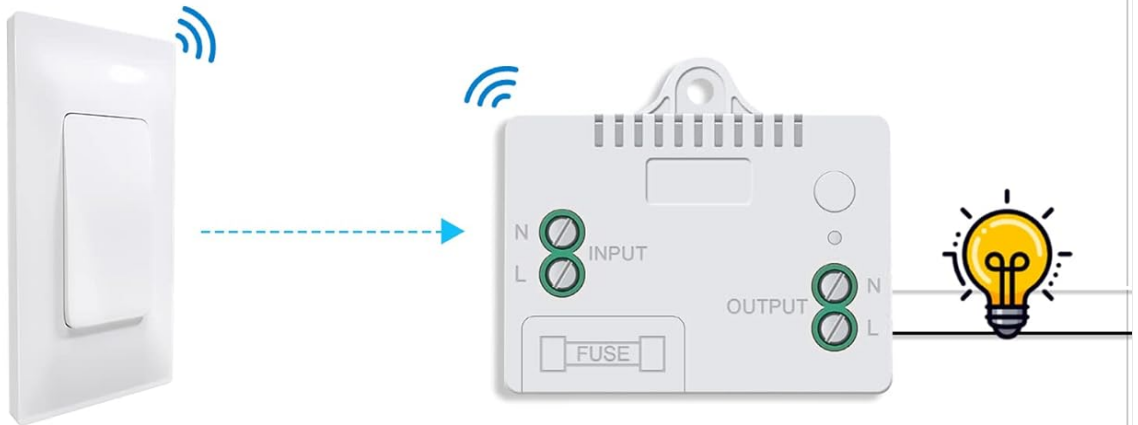
Multi-Way Control Systems

The Milfra system supports flexible multi-way control configurations:

- **One Switch Controls Multiple Lights:** A single wireless switch can be paired with multiple receiver modules to control several light fixtures simultaneously.
- **Multiple Switches Control One Light:** Up to 15 wireless switches can be paired with a single receiver module, allowing a single light fixture to be controlled from various locations.

Two Control Methods

One Switch Controls One Lamp



Multi Switches Control One Lamp

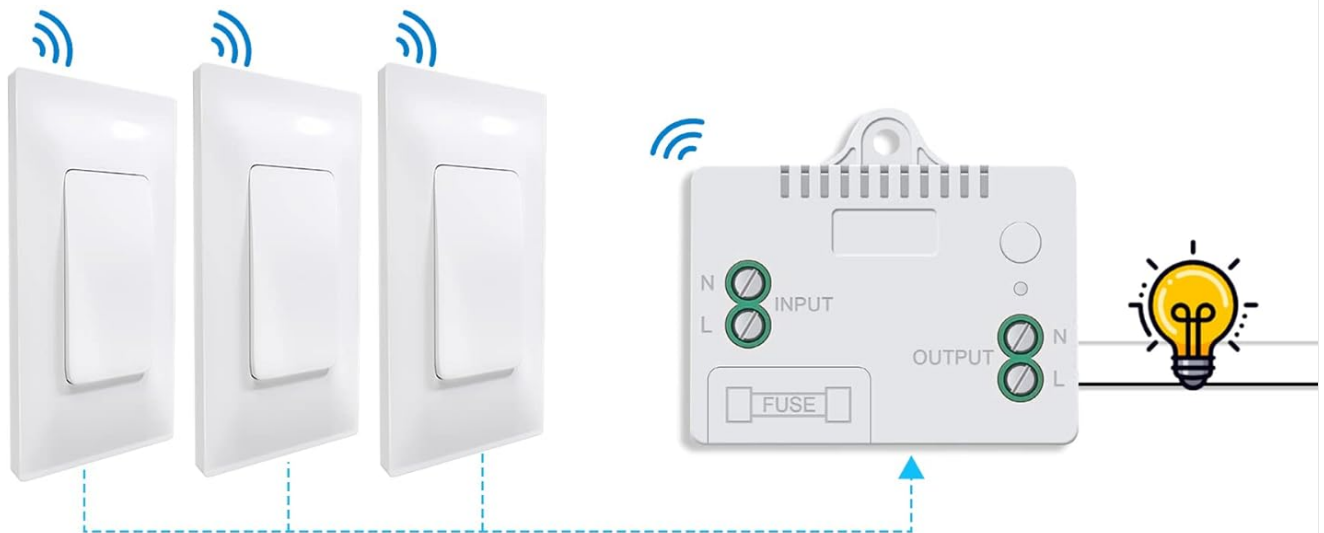


Image: Illustration of two control methods: one switch controlling one lamp, and multiple switches controlling one lamp.

Connection pairing

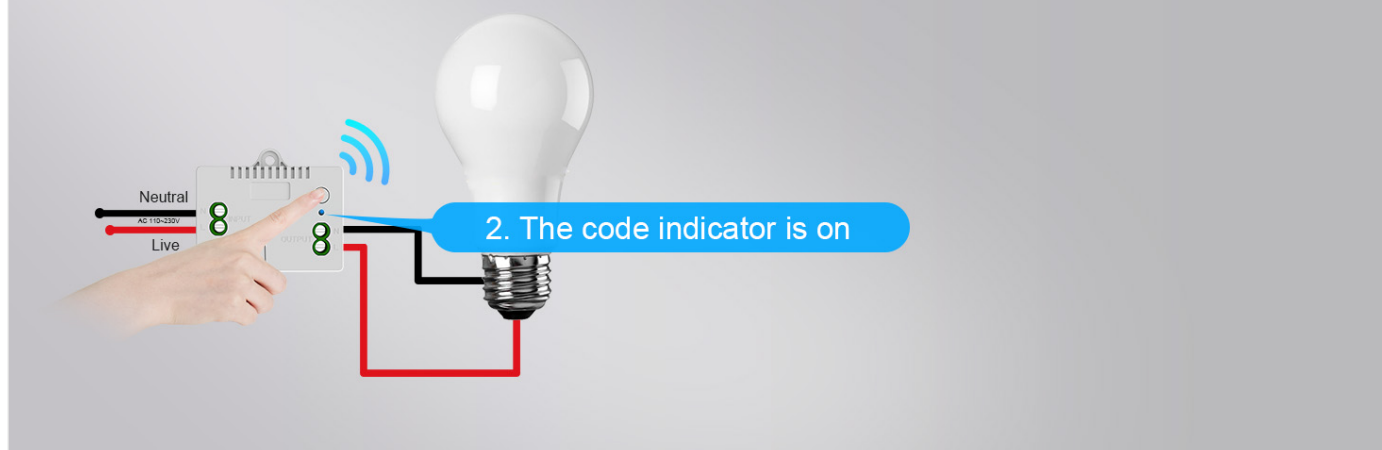


Image: Diagram illustrating how one switch can control multiple lights, and how multiple switches can control a single light.

Flexible Placement

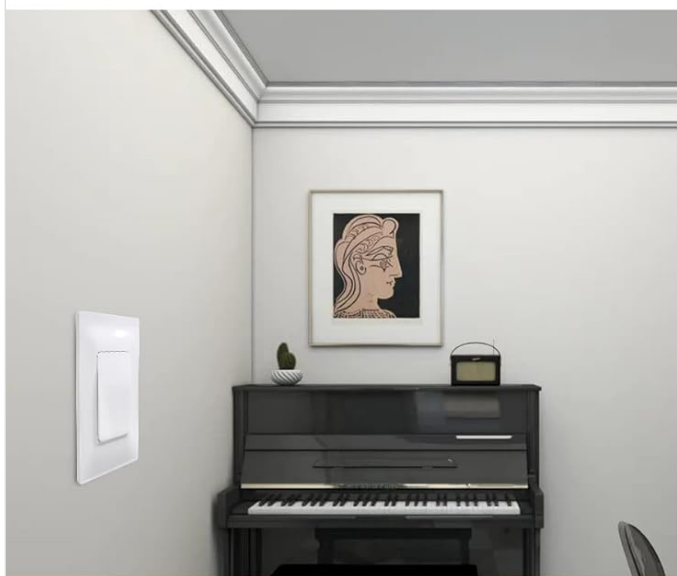
The wireless switch can be mounted on any flat surface using the provided adhesive tape or screws, or simply placed on a bedside table or desk for portable control.



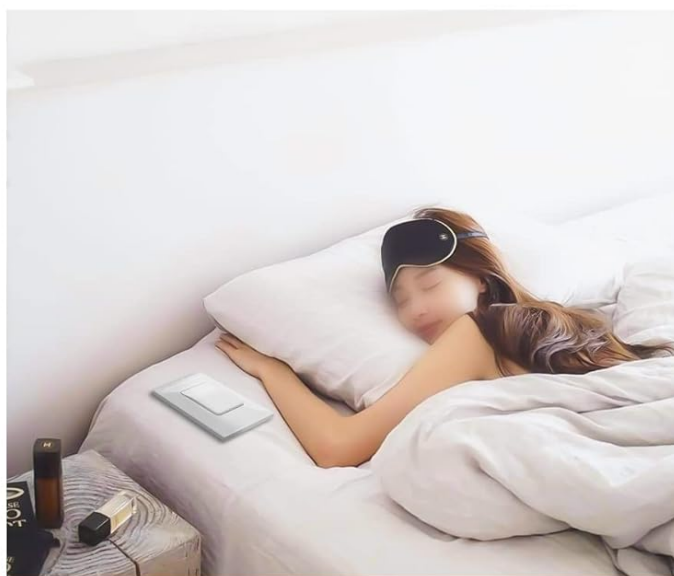
Hold in hand



Stick on the mirror



Fixed to the wall



Next to the pillow

Image: Examples of flexible placement options for the wireless switch, including holding in hand, sticking on a mirror, fixing to a wall, or placing next to a pillow.

CARE AND MAINTENANCE

- **Cleaning:** Wipe the switch and receiver with a soft, dry cloth. Do not use abrasive cleaners or solvents.
- **Environment:** While the switch is waterproof, avoid submerging it in water. Ensure the receiver module is installed in a dry, protected location.
- **No Batteries:** Since the switch is self-powered, there are no batteries to replace, simplifying maintenance.
- **Regular Checks:** Periodically check the wiring connections to the receiver to ensure they remain secure.

Can turn it on in the wet environment
No risk of electric shock



Image: The wireless switch is shown in a bathroom setting, demonstrating its suitability for wet environments without risk of electric shock.

TROUBLESHOOTING

Problem	Possible Cause	Solution
Light does not turn ON/OFF.	No power to receiver; Receiver not paired with switch; Incorrect wiring; Receiver malfunction.	Check power supply to receiver. Re-pair the switch and receiver (see Installation Guide). Verify wiring connections. If issues persist, contact support.
Switch range is limited.	Excessive obstacles (thick walls, metal structures); Interference from other RF devices.	Try relocating the receiver or switch to a position with fewer obstructions. Minimize other RF interference.
Multiple switches not controlling one light.	Not all switches are paired to the same receiver.	Ensure each additional switch is paired to the receiver following the pairing instructions.

One switch not controlling multiple lights.	Not all receivers are paired to the same switch.	Ensure each additional receiver is paired to the switch following the pairing instructions.
---	--	---



strong wireless signal

Control the lights in the room even
indoor outside the room

100ft

330ft

(Outdoor: Suitable for open areas, the scope of use in non-open areas will be reduced)

Image: Diagram illustrating the strong wireless signal range of the system, showing indoor and outdoor effective distances.

WARRANTY AND SUPPORT

Milfra products are designed for reliability and performance. For specific warranty details and technical support, please refer to the official Milfra website or contact their customer service directly.

You can also find additional information and a downloadable PDF version of the user manual at: [Milfra User Manual PDF](#)

