

Zomagas 1370A

Zomagas Range Hood Insert 30 Inch Instruction Manual

Model: 1370A

INTRODUCTION

This manual provides detailed instructions for the installation, operation, and maintenance of your Zomagas Range Hood Insert 30 Inch. Please read this manual thoroughly before installation and use to ensure proper function and safety.

SAFETY INFORMATION

Always follow basic safety precautions when using this appliance to reduce the risk of fire, electric shock, or injury to persons.

- Ensure the power supply is disconnected before servicing or cleaning.
- Installation must be performed by a qualified technician in accordance with all applicable codes and standards.
- Do not operate any fan with a damaged cord or plug. Discard fan or return to an authorized service facility for examination and/or repair.
- Adequate ventilation is required for proper combustion and exhausting of gases through the flue (chimney) of fuel-burning equipment to prevent back-drafting.

WHAT'S IN THE BOX

Verify that all components are present before beginning installation:

- Zomagas Range Hood Insert (Model 1370A)
- Aluminum Mesh Filters (2 Pcs)
- Installation Kit
- Instruction Manual
- LED Lights (Pre-installed)
- 6-inch Aluminum Ducting (for standard vent hood configuration)

SPECIFICATIONS

Air Flow Capacity	600 Cubic Feet Per Minute (CFM)
Material	Brushed 430 Stainless Steel
Noise Level	Below 65 Decibels (dB)
Mounting Type	Insert Mount
Controls Type	Push Button
Number of Speeds	3
Light Source Type	LED
Filter Type	5-layer Aluminum Mesh
Ventilation Type	Convertible (Ductless/Ducted)
Product Dimensions (W x D x H)	27.8 inch x 11.5 inch x 10.3 inch
Install Cut Out Dimensions (W x D)	26 inch x 10.2 inch
Electrical Requirements	120V/60Hz, 3 Prong Plug

SETUP AND INSTALLATION

The Zomagas Range Hood Insert is designed for flexible installation, supporting both ducted and ductless configurations. Ensure your cabinet opening matches the specified cutout dimensions (26 inch W x 10.2 inch D).

Installation Steps:

- 1. Prepare the Cabinet:** Ensure the cabinet opening is precisely 26 inches wide by 10.2 inches deep.
- 2. Ducting Option:**
 - **Ducted Mode:** Connect the included 6-inch aluminum ducting to the top exhaust port of the range hood and route it to your external ventilation system.
 - **Ductless Mode:** If external venting is not available, install optional CFZMG01 charcoal filters (sold separately) onto the motor. This recirculates filtered air back into the kitchen.
- 3. Mounting:** Secure the range hood insert into the cabinet opening using the provided installation kit. Follow the detailed instructions in the included manual for precise mounting.
- 4. Electrical Connection:** Connect the 3-prong plug to a standard 120V/60Hz electrical outlet.
- 5. Remove Protective Film:** A protective blue film is included to prevent scratches during shipping. Carefully remove this film from all stainless steel surfaces after installation.



Image: The Zomagas Range Hood Insert 30 Inch, showcasing its sleek stainless steel design and integrated LED lights.

Product Dimensions

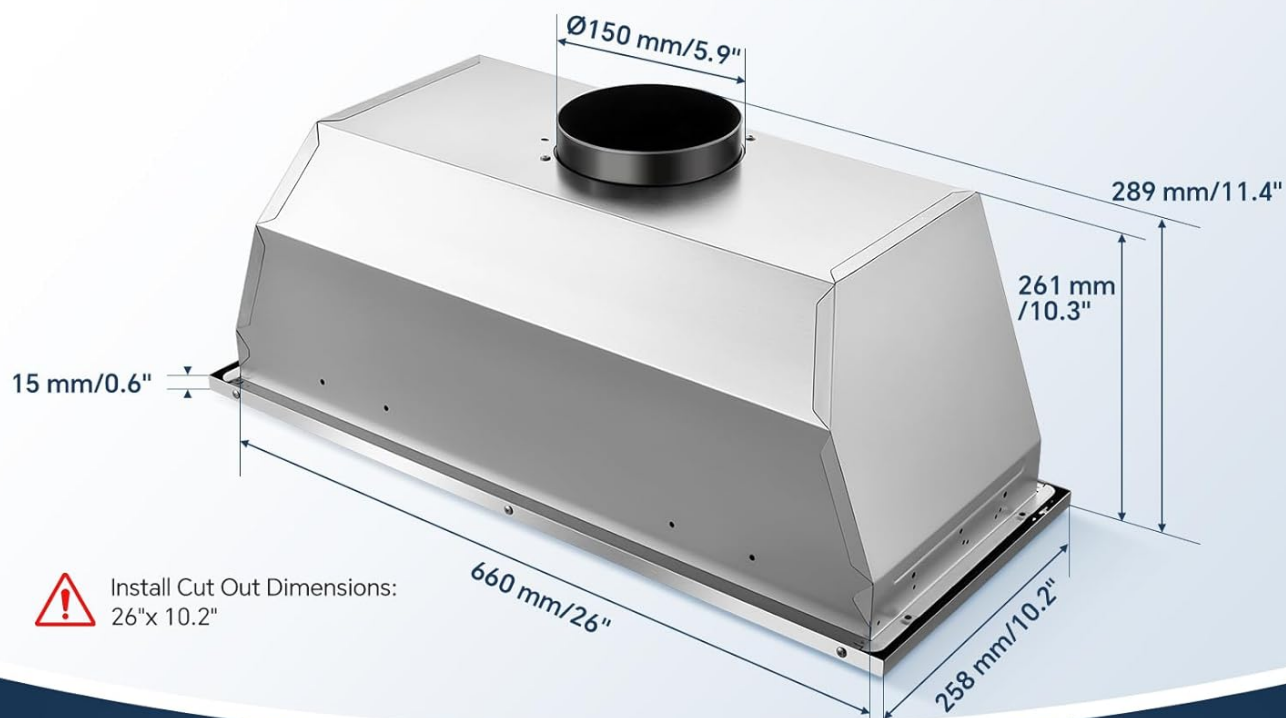


Image: Detailed product dimensions and recommended installation cutout dimensions for the range hood insert.



Image: Visual representation of the range hood operating in both ductless mode with carbon filters and ducted mode with an exhaust pipe.

Your browser does not support the video tag.

Video: A demonstration of the Zomagas Range Hood Insert 30 Inch, highlighting its features and installation process. This video is provided by a seller.

OPERATING INSTRUCTIONS

The Zomagas Range Hood features intuitive push-button controls for easy operation.

Controls:

- **Power Button:** Press to turn the fan on or off.
- **Fan Speed Buttons (3-Speed):** Select between low, medium, and high fan speeds to match your cooking needs.
 - **Low Speed:** Ideal for simmering or light cooking.
 - **Medium Speed:** Suitable for general cooking and frying.
 - **High Speed:** Provides maximum suction for heavy cooking or stir-frying.

- **LED Light Button:** Press to turn the two energy-efficient LED lamps on or off. These lights illuminate your cooking surface.



Image: Close-up view of the push button controls for power, fan speed, and LED lighting on the range hood.

Powerful But Quiet

Noise level below 65dB even in high-speed mode



Image: Illustration demonstrating the three fan speed settings (low, medium, high) and their recommended uses for different cooking intensities.

Your browser does not support the video tag.

Video: A short video demonstrating the operation of the range hood, including fan speeds and lighting. This video is provided by a seller.

MAINTENANCE

Regular maintenance ensures optimal performance and longevity of your range hood.

Cleaning the Aluminum Mesh Filters:

The 5-layer aluminum mesh filters effectively trap grease and smoke particles. For best performance, clean them regularly.

1. **Removal:** The filters are detachable. Locate the release tabs or handles on each filter and gently pull to remove them from the hood.
2. **Cleaning:** The filters are hand-washable. You can wash them in warm, soapy water or place them in a dishwasher.

Ensure all grease and residue are removed.

3. **Drying and Reinstallation:** Allow the filters to dry completely before reinserting them into the range hood.

Replacing Charcoal Filters (Ductless Mode Only):

If using the range hood in ductless mode with CFZMG01 charcoal filters, these filters need to be replaced periodically (typically every 3-6 months depending on usage) as they cannot be cleaned.

1. **Access:** Remove the aluminum mesh filters to access the charcoal filters attached to the motor.
2. **Replacement:** Carefully detach the old charcoal filters and install new ones according to the instructions provided with the replacement filters.

Ductless / Ducted Convertible



Image: The detachable aluminum mesh filters, illustrating their easy removal for cleaning.

TROUBLESHOOTING

If you encounter issues with your Zomagas Range Hood, refer to the following common troubleshooting steps:

- **Fan Not Operating:**

- Check if the power cord is securely plugged into a functional outlet.
- Verify that the circuit breaker has not tripped.
- Ensure the power button on the control panel is pressed.

• **Poor Suction:**

- Clean the aluminum mesh filters. Clogged filters reduce airflow.
- For ductless mode, check if charcoal filters need replacement.
- Ensure there are no obstructions in the ducting (if ducted).
- Verify that the fan speed is set appropriately for the cooking intensity.

• **Lights Not Working:**

- Check if the LED light button is pressed.
- Ensure the power supply to the unit is active.
- If individual LED lamps are replaceable, consult the full instruction manual for replacement procedures.

• **Excessive Noise:**

- Ensure the unit is securely mounted and all screws are tightened.
- Check for any loose parts or debris inside the fan housing.
- Verify that the filters are correctly installed.


For issues not resolved by these steps, please contact customer support.

WARRANTY AND SUPPORT

Your Zomagas Range Hood Insert is covered by a manufacturer's warranty. Please refer to the warranty card included with your product for specific terms and conditions.

For technical assistance, parts, or warranty claims, please contact Zomagas customer support through their official website or the contact information provided in your product packaging.

Related Documents - 1370A

<div><div><div>SPECIFICATIONS</div><div>Product Information Technical Details</div></div></div>	<div>Zomagas 24 Inch Wall Mount Range Hood Specifications</div> <div>Detailed specifications for the Zomagas 24-inch wall mount range hood, featuring 450 CFM airflow, stainless steel baffle filters, gesture control, and convertible ventilation. Includes technical details, dimensions, and model information.</div>
--	---

SPECIFICATIONS

Product Dimension

Product Information

Technical Details

400mm (15.75")

[Zomagas Under Cabinet Range Hood Specifications - Model 768795742757](#)

Detailed specifications for the Zomagas 768795742757 under cabinet range hood, including dimensions, airflow, material, noise level, and features.

GL






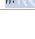

Recessed Spot Light

Technical Specifications

CE

[Gulf Lights 02DL-PA-1370A Recessed Spot Light Technical Specifications](#)

Detailed technical specifications for the Gulf Lights 02DL-PA-1370A recessed spot light, including dimensions, material, electrical data, and certifications.

Servos (JD)			
SKU	PICTURE	NAME	Weight
AA476		Servo Motor 180 degrees high quality	10g
AA477		Servo Motor 180 degrees high quality	10g
AA478		Servo Motor 180 degrees high quality	10g
AA479		Servo Motor 180 degrees high quality	10g
AA480		Servo Motor 180 degrees high quality	10g
AA481		Servo Motor 180 degrees high quality	10g
AA482		Servo Motor 180 degrees high quality	10g

[RC Servo Motors Catalog - FEETECH, Tower Pro, EMAX, and more](#)

Comprehensive catalog of RC servo motors including models from FEETECH, Tower Pro, EMAX, KUONGSHUN, DSSERVO, KINGMAX, HITEC, LOBOT, and POWER HD. Features detailed specifications on torque, degrees, and weight.