

Laluztop B0DNJLSRNR

Laluztop Automatic Curling Iron User Manual

Model: B0DNJLSRNR

Rose Gold Edition

[Instructions](#) [Maintenance](#) [Safety Information](#) [Troubleshooting](#) [Setup](#) [Operating](#) [Specifications](#) [Warranty & Support](#)

1. SAFETY INFORMATION

Please read all safety instructions carefully before using the Laluztop Automatic Curling Iron to prevent injury or damage.

- **Burn Hazard:** Surfaces of the curling iron become extremely hot during use. Avoid direct contact with skin, especially the scalp, ears, and neck. Use the anti-scald cap and handle with care.
- **Electric Shock Risk:** Keep the device away from water. Do not use near bathtubs, sinks, showers, or any other water sources. Do not immerse the device in water or any other liquid.
- **Fire Risk:** Unplug the curling iron immediately after use and when not in use. Do not leave the device unattended when plugged in. Ensure the device is placed on a heat-resistant surface during use and cooling.
- **Children:** Keep out of reach of children. This appliance is not intended for use by persons with reduced physical, sensory, or mental capabilities, or lack of experience and knowledge, unless they have been given supervision or instruction concerning use of the appliance by a person responsible for their safety.
- **Power Cord:** Do not wrap the power cord around the appliance. Do not pull, twist, or excessively bend the power cord. Inspect the cord regularly for any damage. If the supply cord is damaged, it must be replaced by the manufacturer, its service agent, or similarly qualified persons in order to avoid a hazard.
- **Storage:** Allow the appliance to cool completely before storing. Store in a dry place.

2. SETUP

Before first use, ensure the curling iron is clean and free from any packaging materials. Prepare your hair by ensuring it is dry and detangled.

2.1 Initial Preparation

1. Uncoil the 360° swivel cord completely.

2. Plug the curling iron into a suitable electrical outlet (100V-240V compatible).
3. Ensure your hair is clean, dry, and thoroughly combed to remove any tangles.

No Dead Battery, Always Online



Fast Heating Up



**45 Mins
Auto Shut-off**



**Worldwide Voltage
(100-230V)**



**1.8m 360°
Swivel Cord**

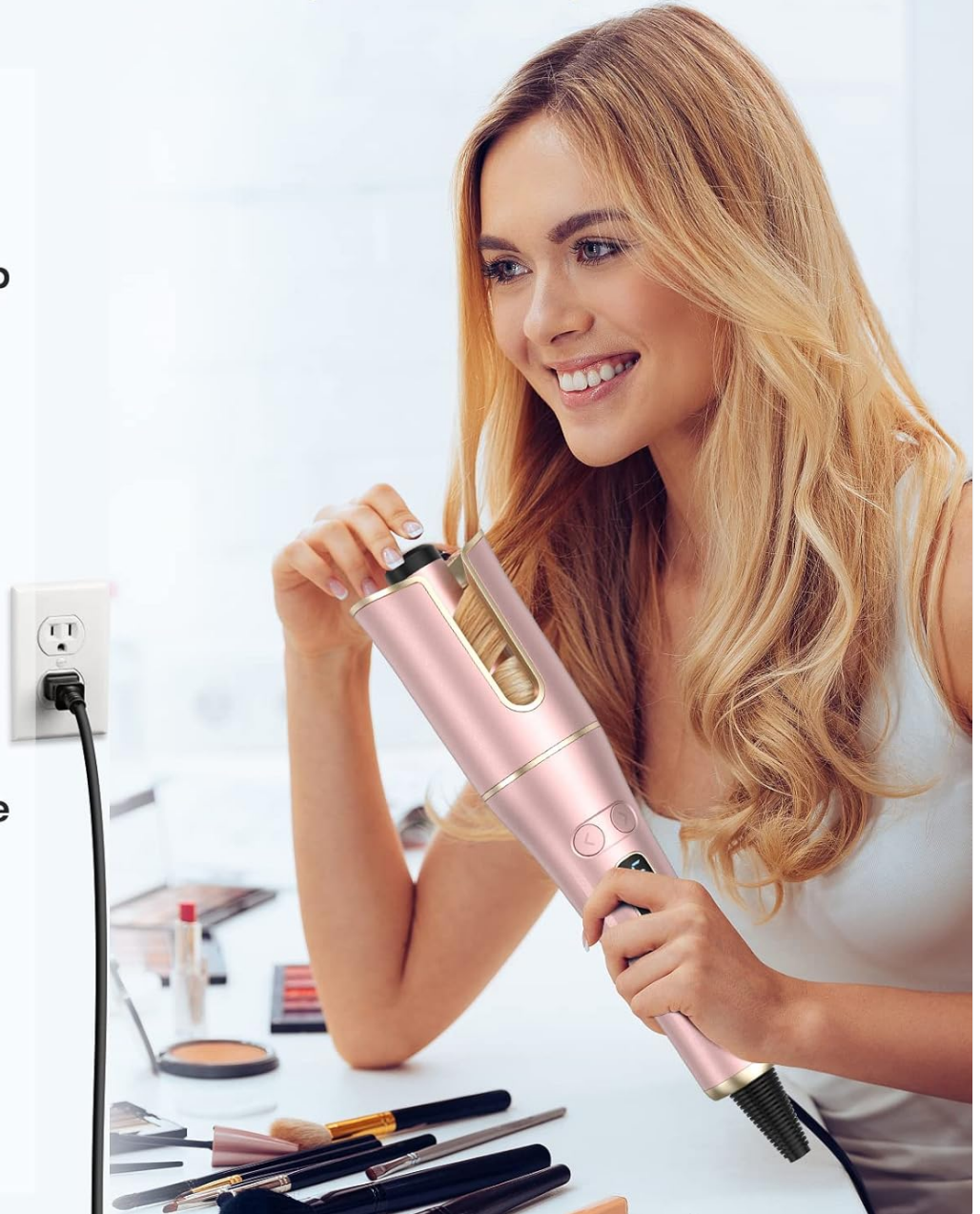


Figure 2.1: Plugging in the Automatic Curling Iron. The device is designed for dual voltage (100V-240V) for worldwide use, eliminating concerns about battery life.

2.2 Power On and Temperature Setting

1. Long press the power button (usually located at the bottom of the control panel) for 3 seconds to turn on the device. The LCD display will illuminate.
2. Press the power button repeatedly to cycle through the 4 temperature settings: 320°F, 360°F, 395°F, and 430°F. Select the temperature appropriate for your hair type.
3. Wait for the curling iron to pre-heat. The temperature display will stop flashing and remain solid when the selected temperature is reached, indicating it is ready for use.



Figure 2.2: Control panel details, including the LCD display for temperature and timer, directional buttons for curling, and the power/temperature setting button.

3. OPERATING INSTRUCTIONS

The Laluztop Automatic Curling Iron is designed for effortless curling with its one-button operation and anti-tangle features.

3.1 Curling Process

1. Take a small section of hair, approximately 1cm-3cm (0.4-1.2 inches) in diameter. Ensure the section is smooth and free of tangles.
2. Position the curling iron with the open slot facing your head. Insert the hair section into the U-shaped slot of the curling chamber. Ensure the hair is placed centrally and not too much hair is inserted into the sides of the barrel to prevent tangling.
3. Press and hold either the left (<) or right (>) directional button. The hair will automatically be drawn into the curling chamber. The direction buttons allow you to choose the curl direction (left or right) for a symmetrical look.
4. Once the hair is fully wound into the chamber, release the directional button. The device will automatically start timing.
5. The curling iron has 3 timer settings: 8s, 12s, and 16s.


- **8s:** For loose waves (one beep).
- **12s:** For soft curls (two beeps).
- **16s:** For tight curls (three beeps).

The device will beep to indicate the curling time is complete.


6. After the beeps, gently pull the curling iron straight down and away from your head to release the perfectly formed curl. Do not pull the hair sideways.
7. Repeat the process for all sections of your hair. Allow curls to cool completely before styling or brushing for best results and longer-lasting curls.

Intelligent Auto Hair Curler


No skills needed



VS



Intelligent Induction Motor



Ours **Others**

Large Curl Chamber Save Your Time

Figure 3.1: The intelligent induction motor and large curl chamber simplify the curling process, requiring no special skills.



4 Adjustable Temperatures & 3 Timers

320°F

360°F

395°F

430°F

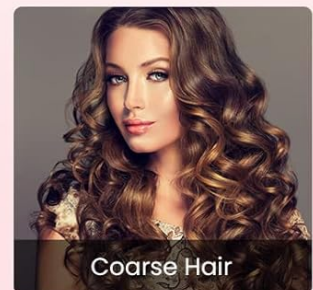
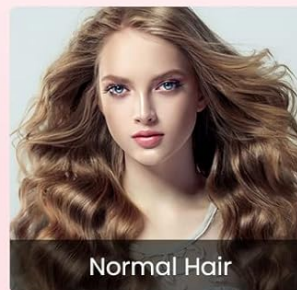
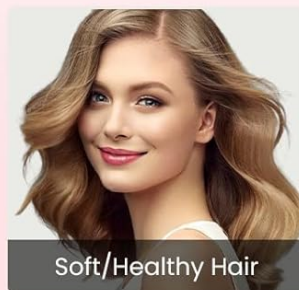


Figure 3.2: Choose from 4 temperature settings and 3 timing options to create a variety of hairstyles, from loose waves to tight curls.

3.2 Video Tutorial: How to Use

Your browser does not support the video tag.

Video 3.1: Official tutorial demonstrating the easy use of the Laluztop Automatic Hair Curler. This video provides a visual guide to the curling process, from powering on to achieving desired curls.

4. MAINTENANCE

Proper maintenance ensures the longevity and optimal performance of your curling iron.

- **Cleaning:** Always unplug the device and allow it to cool completely before cleaning. Wipe the exterior with a soft, damp cloth. Do not use abrasive cleaners or harsh chemicals. Ensure no water enters the curling chamber or electrical components.
- **Hair Residue:** Periodically check the curling chamber for any accumulated hair product residue or loose hairs. Use a small, soft brush or cotton swab to gently clean the inside of the barrel.
- **Storage:** Store the curling iron in a dry, safe place, away from direct sunlight and moisture. Do not wrap the power cord

tightly around the appliance, as this can damage the cord over time.

5. TROUBLESHOOTING

If you encounter any issues with your Laluztop Automatic Curling Iron, refer to the following common problems and solutions:

Problem	Possible Cause	Solution
Device does not turn on.	Not plugged in correctly; power outlet issue; device malfunction.	Ensure the power cord is securely plugged into a working outlet. Try a different outlet. If the issue persists, contact customer support.
Hair gets tangled or stuck in the barrel.	Too much hair inserted; hair not detangled; incorrect insertion.	Ensure hair sections are small (1-3cm diameter) and thoroughly detangled. If hair gets stuck, the smart magnetic induction motor will stop. Gently spin the curling dial in the opposite direction to release the hair. Always insert hair centrally into the slot.
Curls are not holding or are too loose.	Incorrect temperature or timer setting for hair type; hair not fully dry.	Increase the temperature setting or select a longer timer (12s or 16s) for tighter curls. Ensure hair is completely dry before curling. Allow curls to cool completely before touching or styling.
Device is not heating up.	Power issue; internal fault.	Check power connection. Ensure the device is turned on and the pre-heating indicator is active. If no heat is detected after a few minutes, contact customer support.

6. SPECIFICATIONS

Feature	Detail
Brand	Laluztop
Model Number	B0DNJLSRNR
Product Dimensions	1.3 x 1.2 x 1.2 inches
Item Weight	1.23 Pounds
Material	Ceramic Tourmaline
Hair Type Compatibility	All Hair Types
Temperature Settings	4 (320°F, 360°F, 395°F, 430°F)
Timer Settings	3 (8s, 12s, 16s)
Barrel Size	1 inch Large Rotating Barrel
Voltage	Dual Voltage (100V-240V)
Auto Shut-Off	Yes, after 30 minutes of standby.
Cord Type	2.5m 360° Swivel Cord

7. WARRANTY & SUPPORT

Laluztop is committed to providing high-quality beauty and personal care products. While specific warranty details are not provided in this manual, we stand by the quality of our products.

For any product inquiries, technical assistance, or support needs, please contact Laluztop customer service through the retailer where you purchased the product or visit the official Laluztop brand store for contact information.

Visit the [Laluztop Store on Amazon](#) for more information and support resources.

