



Manuals.plus /

› GYENNO /

› GYENNO Parkinson Spoon Instruction Manual

GYENNO Parkinson Spoon

GYENNO Parkinson Spoon Instruction Manual

Brand: GYENNO | Model: Parkinson Spoon

1. INTRODUCTION

The GYENNO Parkinson Spoon is an adaptive utensil designed to assist individuals experiencing hand tremors due to conditions like essential tremor and Parkinson's disease. It incorporates active stabilizing technology to counteract involuntary movements, promoting independence and dignity during meals.

This device utilizes a smart chip and high-precision digital motor to detect and stabilize the spoon head, reducing the impact of tremors by up to 85%. It also offers features like visualization of tremor data via a mobile application and ongoing firmware enhancements.

Incredible Tremor Assistance

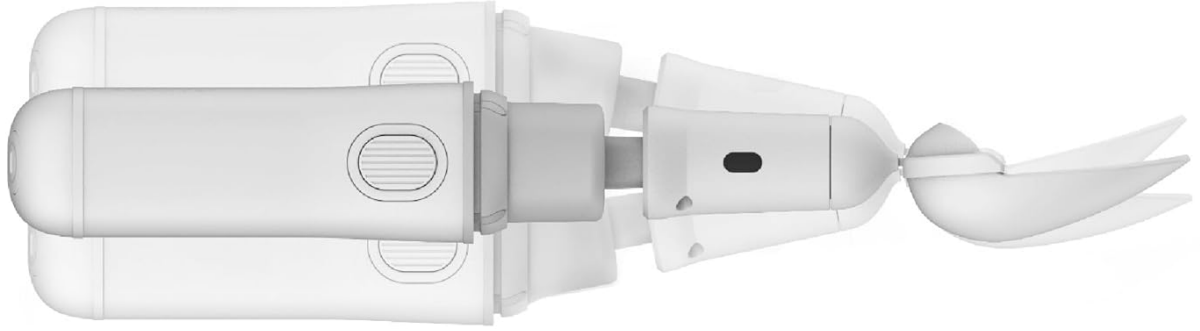


Image: The GYENNO Parkinson Spoon demonstrating its tremor assistance technology, illustrating how real-time motion perception leads to self-adaptive active stabilization.

Retain Dignity with Technology

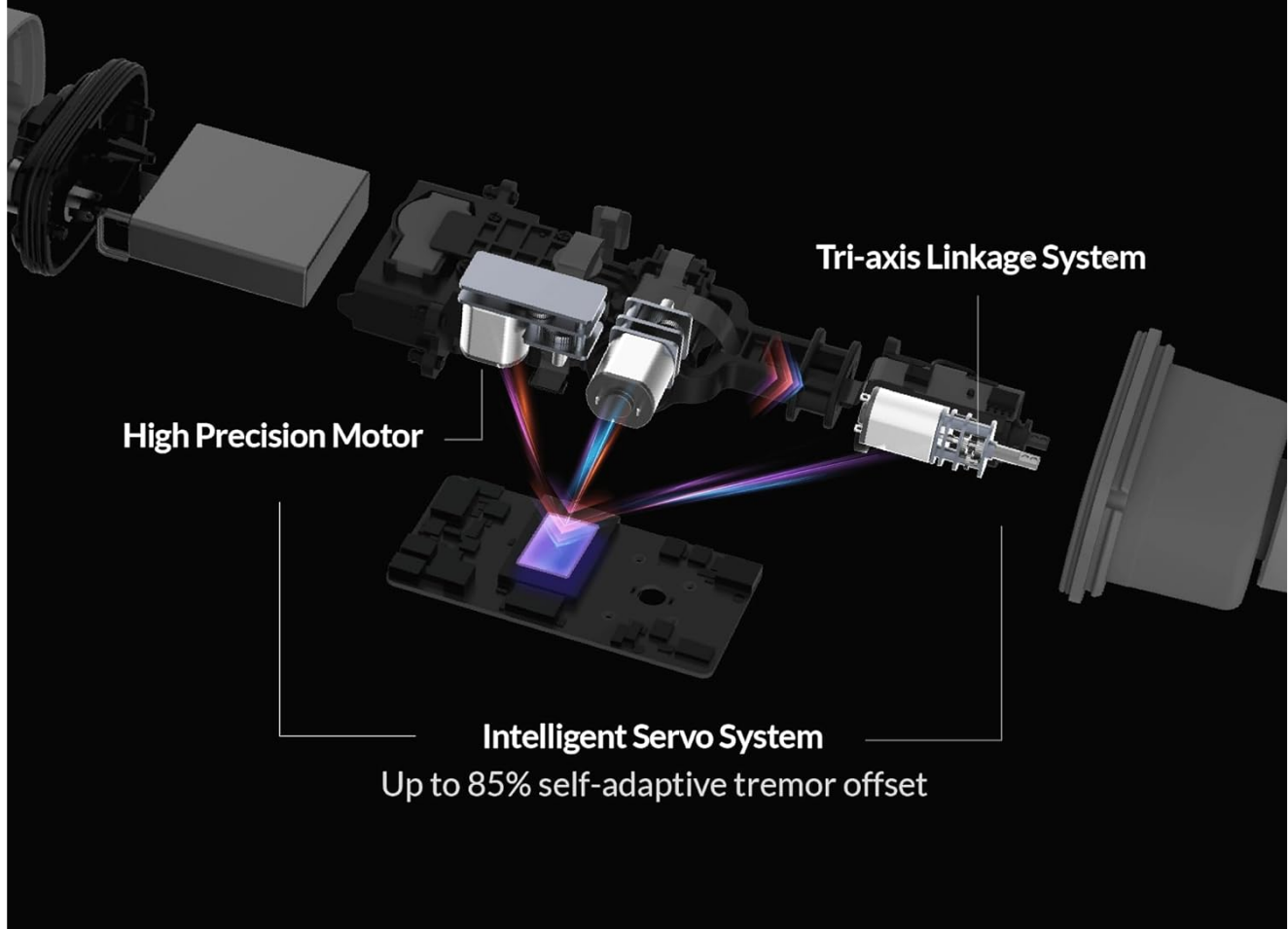


Image: An exploded view of the GYENNO Parkinson Spoon's internal technology, highlighting the tri-axis linkage system, high-precision motor, and intelligent servo system responsible for up to 85% self-adaptive tremor offset.

Your browser does not support the video tag.

Video: "A Half Life--A Parkinson's Patient's Monologue" - This video provides a personal perspective on living with Parkinson's disease and the challenges it presents, offering context for the device's purpose.

2. SETUP AND INITIAL USE

2.1 Charging the Device

Before the first use, ensure the device is charged for at least 3 hours. A charging cable is included in the package box.

1. Plug the round DC port of the cable into the charging port at the bottom of the GYENNO Bravo Twist.
2. Plug the adapter into a power outlet.
3. The indicator light will be constantly yellow while charging.
4. When the indicator light turns constantly green, the device is fully charged.

2.2 App Installation and Device Pairing

The GYENNO Parkinson Spoon can be paired with a mobile application for tremor data visualization and usability testing.

1. Search for "GYENNO SPOON" in the Google Play Store or Apple App Store.
2. Download and install the mobile application.
3. Register a new account and log in.
4. Upon first login, you will be prompted to pair your device. Scan the QR code located on the label of the GYENNO Bravo Twist to pair.
5. Press and hold the power button on the device until the yellow light flashes to enter network configuration mode.
6. Select your Wi-Fi network (only 2.4G frequency band is supported) and enter the password.
7. Wait for the device to complete network configuration. A connection successful prompt will appear.

Your browser does not support the video tag.

Video: "How to Pair Devices and Network Configuration-GYENNO" - This video demonstrates the step-by-step process of pairing your GYENNO device with the mobile application and configuring network settings.



Image: The GYENNO mobile application displaying visual tremor trends, including frequency and amplitude data, allowing users to track disease progression and medication effects.

Know You Better than Yourself



Image: The GYENNO device shown alongside a smartphone running the GYENNO SPOON app, which provides customized medication records, quantified tremor data, and visual tremor trends.

2.3 Usability Test

To evaluate the device's usability, you can perform a test within the app:

1. From the app's main screen, click "Test" to enter the usability test, or navigate to "Mine" > "Usability Test".
2. Read the test instructions carefully before proceeding.
3. Select your dominant hand for dining (Left or Right).
4. Learn the test movement by following the on-screen instructions.
5. After clicking "Start", grip the white area of your phone screen horizontally within 10 seconds and wait for the test to begin.

6. When prompted, grip your phone to simulate scooping food. Stay in the ending action for 3-5 seconds each time, then proceed to the next scooping action. Repeat several times within 30 seconds.
7. After the test, the results will be displayed, indicating if the product could improve your independent dining effectively.

Your browser does not support the video tag.

Video: "How to Know if It Fits You-GYENNO" - This video guides users through the usability test within the GYENNO app to determine the device's effectiveness for their specific tremor.

3. OPERATING INSTRUCTIONS

3.1 First Use and Self-Adaptation

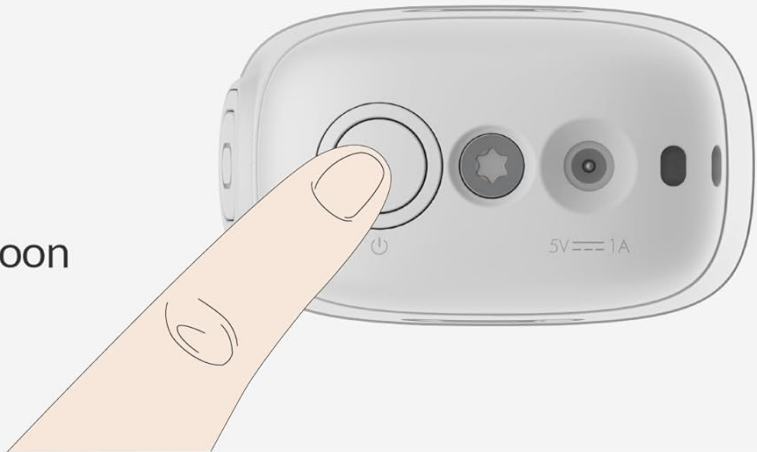
1. Before turning on the GYENNO Bravo Twist, unplug the charging cable.
2. Remove the device cover and place the strap securely on your wrist.
3. Ensure the arrow on the left or right side of the device is pointing towards you.
4. Press the On/Off button for 2 seconds to start the spoon.
5. Wait for the device to complete its self-adaptation process. During this time, avoid shaking the device forcefully.
6. Once self-adaptation is complete, you can begin using the GYENNO Bravo Twist.

Your browser does not support the video tag.

Video: "How to Use It-GYENNO" - This video demonstrates the proper way to start and use the GYENNO Parkinson Spoon for eating.

Easy to Use

2 seconds
to start the spoon



1 second
to put the strap on the wrist



Enjoy your meal
as well as your life



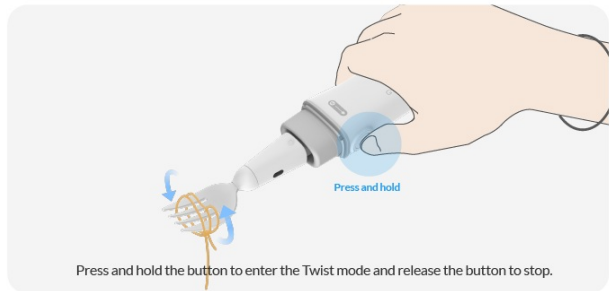
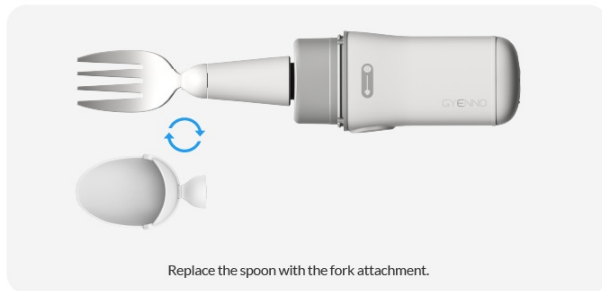
Image: A visual guide illustrating the simplicity of using the GYENNO Parkinson Spoon, from starting the device to securing it on the wrist and enjoying a meal.

3.2 Replaceable Head Attachments and Twist Mode

The GYENNO Bravo Twist comes with two replaceable head attachments: a spoon and a fork, allowing for versatility with different foods.

1. Before replacing the attachment, turn off the device by holding the On/Off button for 1 second.
2. Due to the magnetic connection, you can easily switch attachments by pulling the current one off and pushing the desired one into place. Ensure the device is switched off during replacement.
3. After replacement, press the power button for 2 seconds to start the device.
4. To use the Twist Mode (ideal for noodles), press and hold the button on the side of the handle. This will activate a twisting motion to assist with eating.

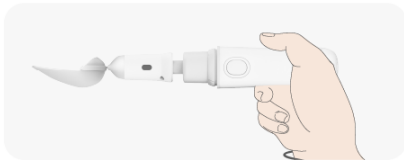
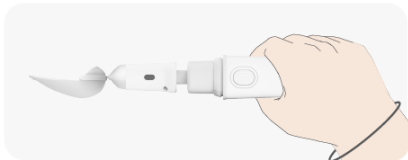
With GYENNO BRAVO Twist Eating Becomes Interesting



Based on spatial perception technology, the GYENNO BRAVO Twist automatically stops the fork attachment horizontally upwards after twisting.

Image: Instructions on replacing the spoon with a fork attachment and using the "Twist Mode" for easier noodle consumption.

Hold It Any Way You Want



CAUTION: To prevent damage by accidental drops, make sure the strap is attached to your wrist when you use it.

Image: A visual guide showing different comfortable grip positions for the GYENNO spoon, emphasizing the importance of attaching the wrist strap to prevent accidental drops.

4. MAINTENANCE AND STORAGE

4.1 Cleaning

1. After finishing your meal, press and hold the power button for 1 second to turn off the device.
2. Make sure the head attachment has been removed from the handle.
3. Clean the head attachment with water. The head attachment is dishwasher safe.
4. To clean stains on the handle part, use a moist towelette or alcohol pad to wipe, then dry with a cloth.

Important Cleaning Notes:

- Avoid splashing or immersing the handle part in water.
- NEVER clean the handle part with a dishwasher.
- STRICTLY PROHIBIT high-temperature sterilization.
- DO NOT PUT IN THE MICROWAVE.

Your browser does not support the video tag.

Video: "How to store and clean the Device-GYENNO" - This video provides instructions on how to properly clean and store your GYENNO device after use.

4.2 Storage

- Make sure the head attachments and handle are cleaned and completely dry before storage.
- Do not store the device in high temperature or high humidity environments.
- For prolonged periods of non-use, ensure the device is fully charged before storage, and charge the device each month to maintain battery health.
- Please place the cover on while storing.

5. TROUBLESHOOTING

If you encounter any issues with your GYENNO Parkinson Spoon, please consider the following general troubleshooting steps:

- **Device Not Turning On:** Ensure the device is fully charged. Connect it to the charger and check if the indicator light turns yellow.
- **Poor Stabilization:** Ensure the device has completed its self-adaptation process. Avoid forceful shaking during initial startup.
- **App Connectivity Issues:** Verify your Wi-Fi connection is stable and operating on the 2.4G frequency band. Re-attempt the pairing process if necessary.
- **Attachment Not Functioning:** Ensure the head attachment is securely connected and the device is powered on.
- **Unusual Noises or Vibrations:** Turn off the device immediately and contact customer support.

For persistent problems or issues not covered here, please refer to the Warranty & Support section for contact information.

6. SPECIFICATIONS

Feature	Detail
Package Dimensions	10.39 x 3.94 x 2.32 inches
Weight	1.04 Pounds
Batteries	1 Lithium Ion battery required (included)
Manufacturer	GYENNO
Wi-Fi Support	2.4G frequency band only



Image: An illustration highlighting the battery life of the GYENNO spoon, indicating that one full charge is sufficient for approximately 9 meals. (*Data from unified standard of professional testing; actual run time may vary.)

Lightweight and Compact

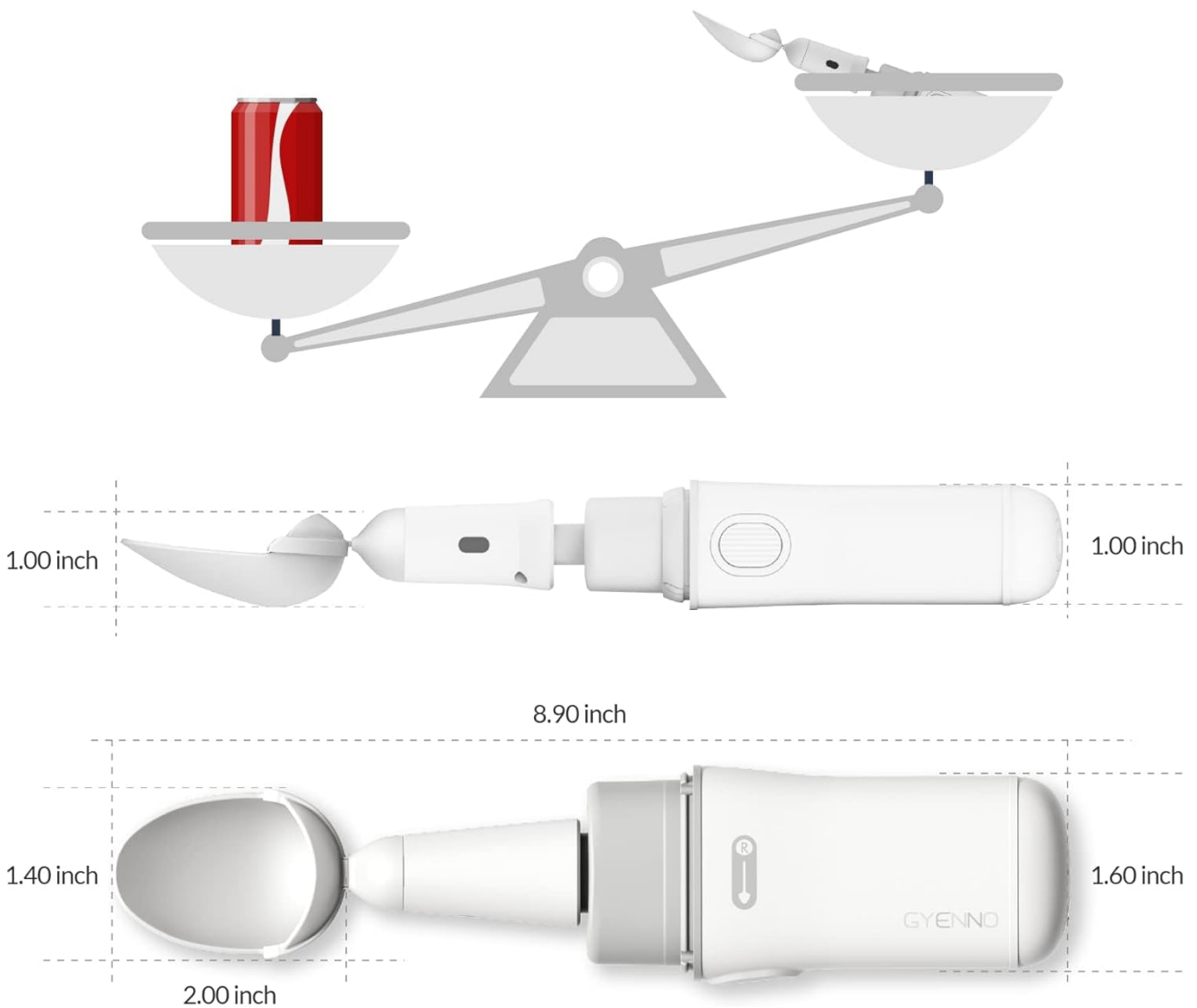


Image: A visual representation of the GYENNO Parkinson Spoon's lightweight and compact design, including its dimensions (8.90 inches long, 1.00-1.60 inches wide) and a comparison to a soda can for scale.

7. WARRANTY AND SUPPORT

The GYENNO Parkinson Spoon comes with a 2-year warranty.

GYENNO SCIENCE is committed to providing efficient and professional customer care. If you have any questions, require technical assistance, or need to claim warranty service, please feel free to contact us.

For support, please visit the GYENNO Store on Amazon or refer to the contact information provided in your product packaging.



We Hear and We Care

GYENNO SCIENCE has an efficient and professional customer care team to provide you with support services.

If you have any questions, please feel free to contact us.

Image: A visual representation of GYENNO's commitment to customer support, highlighting a 2-year warranty and encouraging users to contact them for any questions.