

Jocoevol BG-0605

Jocoevol Black 6-Drawer Dresser Instruction Manual

Model: BG-0605 | Brand: Jocoevol

INTRODUCTION

Thank you for choosing the Jocoevol Black 6-Drawer Dresser. This manual provides essential information for the safe assembly, operation, and maintenance of your new furniture. Please read these instructions carefully before beginning assembly and retain them for future reference. This dresser is designed to provide ample storage and enhance the aesthetics of your bedroom, living room, hallway, or entryway.

IMPORTANT SAFETY INFORMATION

To prevent serious or fatal crushing injuries, this product must be permanently attached to the wall using the provided anti-tip kit. Always ensure the dresser is placed on a level, stable surface. Do not allow children to climb on or play with the dresser or its drawers. Keep small parts away from children during assembly.

Anti-collapse Design

Protect your kids and pets

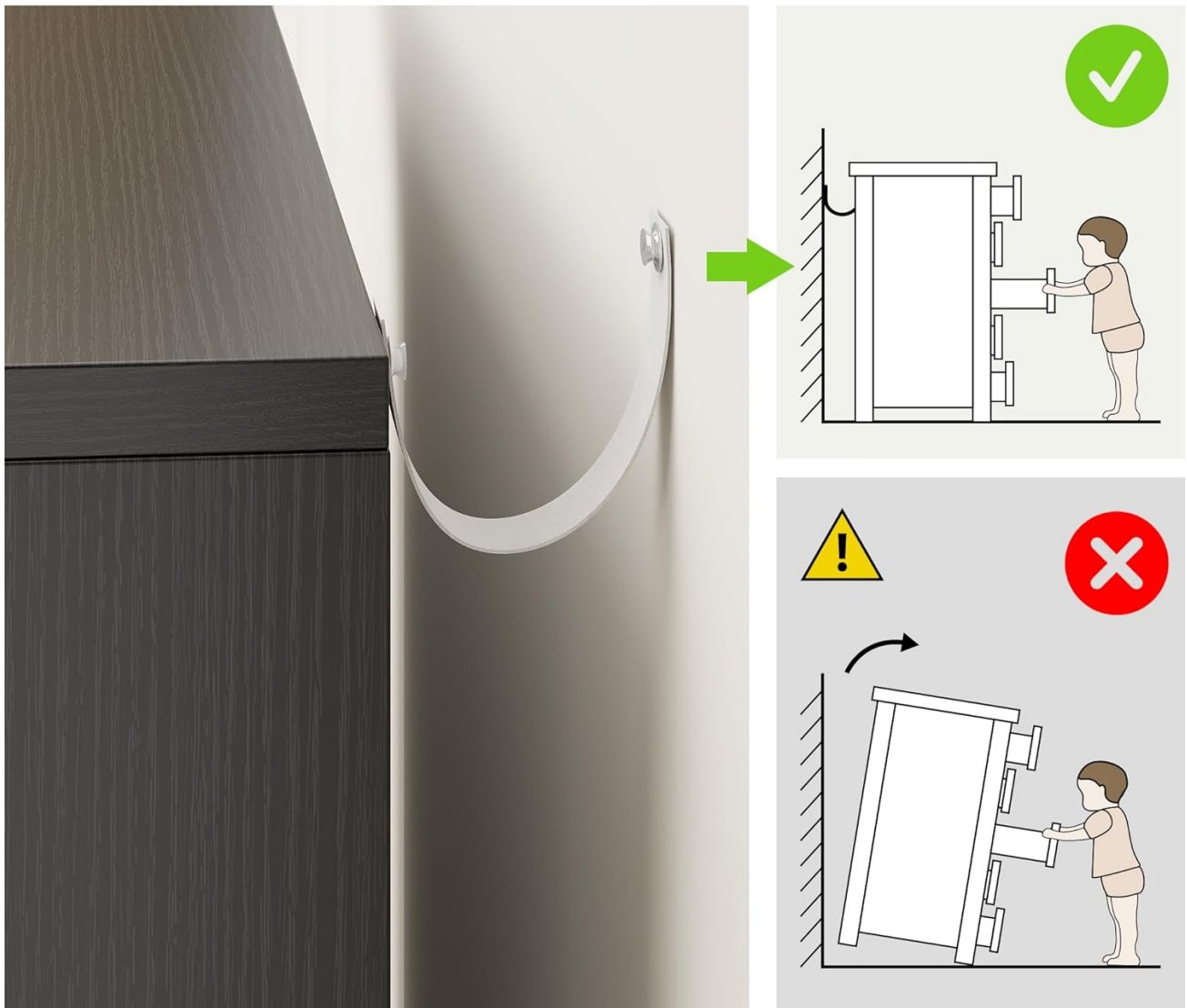


Image: Anti-collapse Design. This diagram illustrates the correct method for securing the dresser to a wall using the anti-tip strap to prevent accidental tipping, especially important for households with children and pets.

PACKAGE CONTENTS

Before assembly, please verify that all parts and hardware are present. Refer to the parts list included in your packaging. If any components are missing or damaged, do not proceed with assembly. Contact customer support for assistance.

- Dresser panels (top, bottom, sides, back)
- Drawer panels (front, back, sides, bottom)
- Drawer slides (under-mounted)
- Hardware pack (screws, dowels, cam locks, anti-tip kit)
- Assembly instructions (this manual)

ASSEMBLY INSTRUCTIONS

Assembly is required for this product. It is recommended that two adults assemble the dresser. Please follow the

step-by-step instructions provided in the separate assembly guide included in your package. Ensure all connections are secure before use. A Phillips head screwdriver and a hammer may be required (not included).



Image: Product Size. This image provides detailed measurements of the dresser (47.2" W x 32.3" H x 15.3" D) and its drawers (21.3" L x 11.8" W x 8.3" H, with a 5.1" internal depth), which can be helpful during assembly and planning placement.



Image: Fully Extended Drawers. This image displays the dresser with all six drawers pulled out, illustrating the full extent of the storage capacity and the smooth operation of the under-mounted slides.

OPERATING INSTRUCTIONS

Using Your Dresser

The Jocoevol 6-drawer dresser is designed for organized storage of clothing, linens, and other personal items. Each drawer operates on smooth, under-mounted slides for easy opening and closing. Distribute weight evenly across drawers to maintain balance and prevent strain on the slides.

Classified Storage

Easy access to socks, underwear or small items



Image: Classified Storage. This image demonstrates the versatility of the drawers for organizing various items, from folded clothes like socks and underwear to smaller accessories, promoting easy access and tidiness.

Drawer Operation

- Gently pull the drawer front to open.
- Push the drawer front firmly to close until it is flush with the dresser frame.
- Avoid forcing drawers open or closed if they feel stuck. Check for obstructions.

MAINTENANCE AND CARE

Cleaning and Care

To maintain the appearance and longevity of your dresser, follow these care instructions:

- **Cleaning:** Wipe the surface with a damp cloth. Avoid harsh chemicals or abrasive cleaners, as they may damage the finish.
- **Spills:** Immediately wipe up any spills to prevent staining or water damage.

- **Sunlight:** Avoid prolonged exposure to direct sunlight, which can cause fading or discoloration.
- **Heat:** Do not place hot items directly on the surface. Use coasters or protective pads.

Quality Drawers Dresser



**Environmental
Friendly**



Waterproof



**Easy to
clean**



Stable



Image: Quality Drawers Dresser. This image highlights key attributes of the dresser, including its environmental friendliness, waterproof surface, ease of cleaning, and stable construction, reinforcing its durability and user-friendly design.

Long-Term Storage

If storing the dresser for an extended period, ensure it is clean and dry. Store in a cool, dry place away from extreme temperatures and humidity to prevent warping or damage.

TROUBLESHOOTING

This section addresses common issues you might encounter with your dresser.

- **Drawers are difficult to open/close:**
 - Check if the drawer slides are properly aligned and free of obstructions.
 - Ensure the dresser is on a level surface.

- Do not overload drawers; redistribute contents if necessary.
- **Dresser feels wobbly:**
 - Verify that all assembly hardware is tightened securely.
 - Ensure the dresser is on a flat, stable floor. Adjust leveling feet if applicable (though not specified for this model).
 - Confirm the anti-tip kit is correctly installed and secured to the wall.
- **Surface scratches or marks:**
 - For minor scratches, a furniture repair marker or polish matching the finish may be used.
 - Always use protective pads under items that might scratch the surface.

SPECIFICATIONS

Feature	Detail
Brand	Jocoevol
Model Name	dressers
Model Number	BG-0605
Product Dimensions	15.3"D x 47.2"W x 32.3"H
Item Weight	92 Pounds
Color	Black
Number of Drawers	6
Drawer Type	Under Mounted Slide
Room Type	Bedroom, Home Office, Living Room, Hallway, Entryway
Assembly Required	Yes
Product Care Instructions	Wipe with Damp Cloth

WARRANTY AND SUPPORT

For warranty information and customer support, please refer to the documentation included with your purchase or visit the official Jocoevol website. If you have any questions or require assistance with your dresser, please contact Jocoevol customer service directly. Keep your purchase receipt for warranty claims.

Note: Specific warranty terms and conditions may vary and are subject to change.