

YGSKK Portable 4K projector

YGSKK Mini Projector User Manual

MODEL: PORTABLE 4K PROJECTOR

Introduction

This manual provides comprehensive instructions for the setup, operation, and maintenance of your YGSKK Mini Projector. Please read this manual thoroughly before using the product to ensure proper function, optimal performance, and longevity. Keep this manual for future reference.

Important Safety Instructions

To reduce the risk of electric shock, fire, or injury, always follow these basic safety precautions:

- Do not block any ventilation openings. Ensure adequate space around the projector for proper airflow.
- Do not expose the projector to rain, moisture, dripping, or splashing. Do not place objects filled with liquids, such as vases, on the apparatus.
- Use only attachments and accessories specified by the manufacturer.
- Refer all servicing to qualified service personnel. Servicing is required when the apparatus has been damaged in any way, such as power-supply cord or plug is damaged, liquid has been spilled or objects have fallen into the apparatus, the apparatus has been exposed to rain or moisture, does not operate normally, or has been dropped.
- Unplug this apparatus during lightning storms or when unused for long periods of time.

Package Contents

Verify that all items listed below are included in your package:

- 1 YGSKK Mini Projector
- 1 HDMI 3-in-1 Mobile Phone Adapter
- 1 Remote Control
- 1 HDMI Cable
- 1 Power Cord

- 1 User Manual (this document)

Accessories Included



Remote Control



Power Cord



User Manual



HDMI Cable



HDMI Phone Adapter



Image: Accessories included with the YGSKK Mini Projector: remote control, power cord, user manual, HDMI cable, and HDMI phone adapter.

Product Overview

The YGSKK Mini Projector is a compact and versatile device designed for various projection needs. It features a lens, ventilation ports, and multiple input/output connections.



Image: Front view of the YGSKK Mini Projector, showing the lens and overall compact design.

Wide Compatibility



Audio



Speaker



Headphones



USB



U disk



Mobile hard disk



HDMI



Smart phone



Laptop /PC



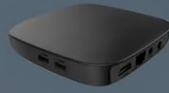
X box/PS5



TV stick



DVD play



TV box



NETFLIX

Apple tv+

HBOmax

hulu

prime video

Image: Rear view of the YGSKK Mini Projector, illustrating the HDMI, USB, and audio ports.

1. Initial Setup

1.1 Power Connection

Connect the provided power cord to the projector's power input and then plug the other end into a standard electrical outlet. The projector will power on or enter standby mode.

1.2 Placement and Angle Adjustment

The YGSKK Mini Projector features a 180° rotatable base, allowing for flexible placement and projection angles. Adjust the projector to your desired position, whether projecting onto a wall, ceiling, or screen.

180° built-in Adjustable Bracket



Image: Diagram showing the 180-degree adjustable bracket of the YGSKK Mini Projector, allowing for various projection angles from 0 to 180 degrees.

1.3 Electric Focus Adjustment

To achieve a clear image, use the electric focus function. Press the **F+** or **F-** buttons on the remote control to adjust the focus until the projected image appears sharp and clear.

Electric Focus

Quickly adjust the picture quality within a few seconds, more worry free, more convenient



Image: Image demonstrating the electric focus function of the YGSKK Mini Projector, showing a remote control with F+ and F- buttons for quick focus adjustment.

2. Operation

2.1 Connecting to Smartphones (iOS/Android)

The projector includes an HDMI 3-in-1 mobile phone adapter for direct smartphone connectivity.

- **For iOS devices (iPhone/iPad):** Connect your iOS device to the projector using the HDMI adapter. No additional app download is required. After connecting, enable screen mirroring on your iOS device to project its display.
- **For Android devices:** Connect your Android phone to the projector using the HDMI adapter. An app download may be required; a download prompt will appear automatically on your phone. Note: Depending on the Android device, only sound may be transferred, not images.

Easier To Connect To a Smartphone

No WIFI is required to connect to your phone
and enjoy a smoother experience



Includes a mobile
phone adapter

Image: The YGSKK Mini Projector connected to a smartphone via the included mobile phone adapter, projecting an image onto a screen.

2.2 Connecting to Other Devices (HDMI/USB)

The projector offers wide compatibility with various devices:

- **HDMI:** Use the included HDMI cable to connect devices such as TV sticks, TV boxes, DVD players, PCs, laptops, PS5, PS4, or XBOX consoles to the projector's HDMI port.
- **USB:** Insert USB flash drives or portable hard drives into the USB port for direct media playback.

0 Delay Connecting To The Computer



Includes an HDMI cable

Laptop /PC:

Connect to your laptop or desktop PC via HDMI cable (HDMI cable included)

Image: A YGSKK Mini Projector connected to a laptop via an HDMI cable, projecting a game onto a screen.

2.3 Bluetooth Audio Connection

The projector is equipped with Bluetooth 5.3 for wireless audio output. You can connect to Bluetooth headphones or external Bluetooth speakers for an enhanced audio experience. To pair, navigate to the Bluetooth settings on the projector and select your desired audio device.

Note:

- Bluetooth does not support connection with smartphones for screen mirroring. It is for audio output only.

2.4 Adjusting Projection Size

The projector can produce a large screen size ranging from 50 to 200 inches. To adjust the image size, simply move the projector closer to or further away from the projection surface. The image quality remains clear with native 1080P resolution and 4K compatibility.

Native 1080P, Compatible With 4K, More Clear Picture Quality

Compatible with 4K

50000Lumen

10000:1 Contrast ratio

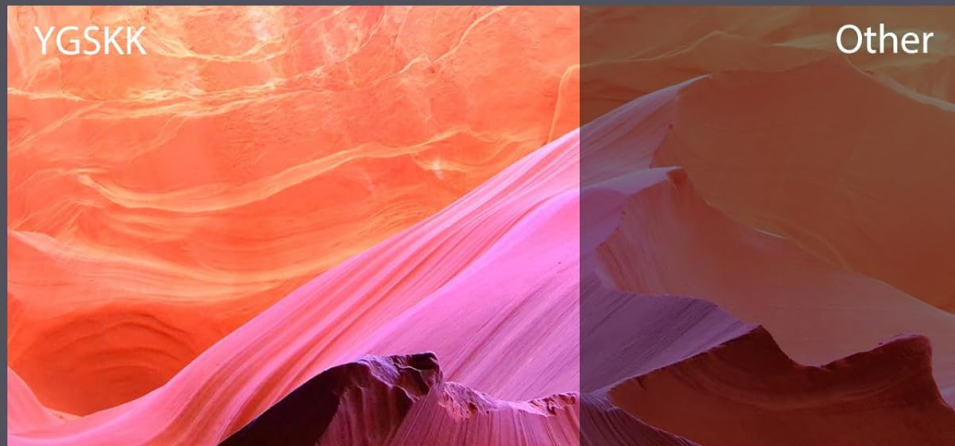


Image: Comparison image showing the clear picture quality of the YGSKK projector (left) versus another projector (right), demonstrating native 1080P resolution and 4K compatibility.

3. Maintenance

3.1 Cleaning the Lens

Use a soft, lint-free cloth specifically designed for optical lenses to gently wipe the projector lens. Do not use abrasive cleaners, solvents, or harsh chemicals, as these can damage the lens coating.

3.2 Cleaning the Projector Body

Wipe the exterior of the projector with a soft, dry cloth. Avoid using liquid cleaners or sprays directly on the device. Ensure no liquids enter the ventilation openings.

3.3 Storage

When not in use, store the projector in a cool, dry place away from direct sunlight and extreme temperatures. If storing for an extended period, consider placing it in its original packaging or a protective case to prevent dust accumulation.

4. Troubleshooting

If you encounter issues with your YGSKK Mini Projector, refer to the following common problems and solutions:

4.1 No Image/Signal

- Ensure all cables (HDMI, power) are securely connected to both the projector and the source device.
- Verify that the correct input source (e.g., HDMI, USB) is selected on the projector.
- If using a smartphone adapter, ensure it is properly connected and screen mirroring is enabled (for iOS) or the required app is installed (for Android).
- **Important Note:** Due to HDCP (High-bandwidth Digital Content Protection) protocols, direct screen mirroring from certain streaming applications (such as Prime Video, Netflix, Hulu, etc.) may not work. For these applications, it is recommended to connect a TV stick (not included) to the projector's HDMI port.

4.2 Blurry Image

- Adjust the electric focus using the **F+** or **F-** buttons on the remote control until the image is sharp.
- Ensure the projector is placed at an appropriate distance from the projection surface.

4.3 No Sound or Low Volume

- Check the projector's volume settings and the volume level of the connected source device.
- If using Bluetooth audio, ensure the external speaker or headphones are properly paired and their volume is adjusted.
- Confirm that the audio output setting on your source device is directed to the projector or connected Bluetooth device.

4.4 Smartphone Connection Issues

- Ensure the HDMI 3-in-1 adapter is correctly and firmly connected to both your phone and the projector.
- For Android devices, verify that any required app has been successfully downloaded and installed.
- For iOS devices, confirm that screen mirroring is active in your device's control center.

5. Specifications

Feature	Detail
Brand	YGSKK
Model Number	Portable 4K projector
Display Resolution	Native 1920 x 1080 (1080P), Compatible with 4K
Connectivity Technology	3.5mm Jack, Bluetooth 5.3, HDMI, USB
Special Features	Built-In Speaker, Lightweight, Portable, 180° Rotatable Base, Electric Focus
Item Weight	1.76 pounds
Product Dimensions	8 x 4 x 4 inches
Recommended Uses	Home Cinema, Gaming, Business, Education

6. Warranty and Support

6.1 Warranty Information

This YGSKK Mini Projector product includes a three-year warranty service from the date of purchase. Please retain your proof of purchase for warranty claims.

6.2 Technical Support

24/7 lifetime technical support is available for this product. If you have any questions, encounter issues, or require assistance, please contact the manufacturer's customer service team for prompt support.